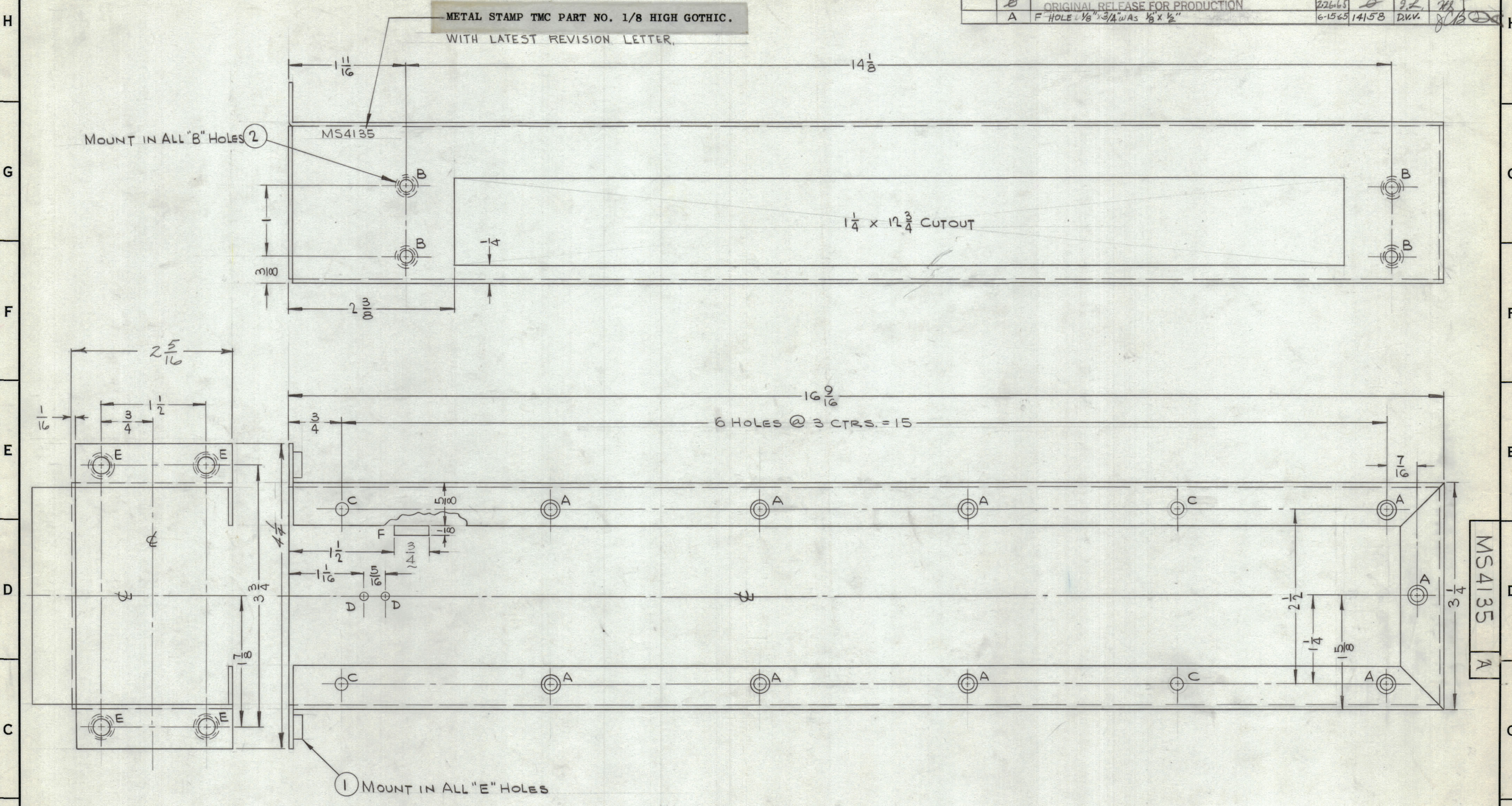


REVISIONS						
ZONE	SYM	DESCRIPTION	DATE	E.M.N. NO.	DRAFT	CHKD
	X	EXPERIMENTAL RELEASE	1-18-65		HLA	
	B	ORIGINAL RELEASE FOR PRODUCTION	2-26-65		DL	HL
	A	F HOLE 1/8" x 3/4" WAS 1/8" x 1/2"	6-15-65	14158	DKV.	DL

METAL STAMP TMC PART NO. 1/8 HIGH GOTHIC.
WITH LATEST REVISION LETTER.



- UNLESS OTHERWISE SPECIFIED:
1. USE MATERIAL THICKNESS FOR MAXIMUM RADIUS ON ALL BENDS
 2. ALL ANGULAR BENDS 90 DEGREES
 3. REMOVE ALL BURRS AND SHARP EDGES
 4. MOUNT INSERTS AFTER FINISHING
 5. ALL FLANGES TO BE 5/8

HOLE	DESCRIPTION	REQ.
A	CSK. # 6-32	9
B	.191-.194 DIA.	4
C	3/16 DIA.	4
D	1/8 DIA.	2
E	.251-.254 DIA.	4
F	1/8 x 3/4 SLOT	1

REF. : LD 1755

REQ'D.	ITEM	PART NUMBER	DESCRIPTION	SYMBOL
4	2	NT1290632-4	NUT, SWAGE	
4	1	NT1291032-4	NUT, SWAGE	

BUDETTI LIST OF MATERIAL

MATERIAL	.064 THK ALUMINUM 3052 H32	TITLE	CHAMBER, AIR
FINISH	IRIDITE	THE TECHNICAL MATERIEL CORP. MAMARONECK, NEW YORK	

DRAWN	H. AUSTIN	DATE	1-18-65	FINAL APPROVAL	DATE
CHECKED	DL	DATE		DL	
ELECT. DES.		DATE			
MECH. DES.		DATE			

UNLESS OTHERWISE SPECIFIED DIMENSIONS ARE IN INCHES AND INCLUDE CHEMICALLY APPLIED OR PLATED FINISHES

DECIMALS	.X ± .05	FRACTIONS	± 1/64
	.XX ± .01	ANGLES	± 0° 30'
	.XXX ± .005	TOLERANCES	

MS4135 A

Q'TY./UNIT	MODEL USED ON	ASS'Y. NO.
1	HVRB-1 HVRC-1	
SCALE	CODE	
1:1		

THE CONTENTS OF THIS DRAWING ARE THE EXCLUSIVE PROPERTY OF THE TECHNICAL MATERIEL CORP. ITS UNAUTHORIZED USE OR REPRODUCTION IN WHOLE OR IN PART IS STRICTLY FORBIDDEN.

NOTES