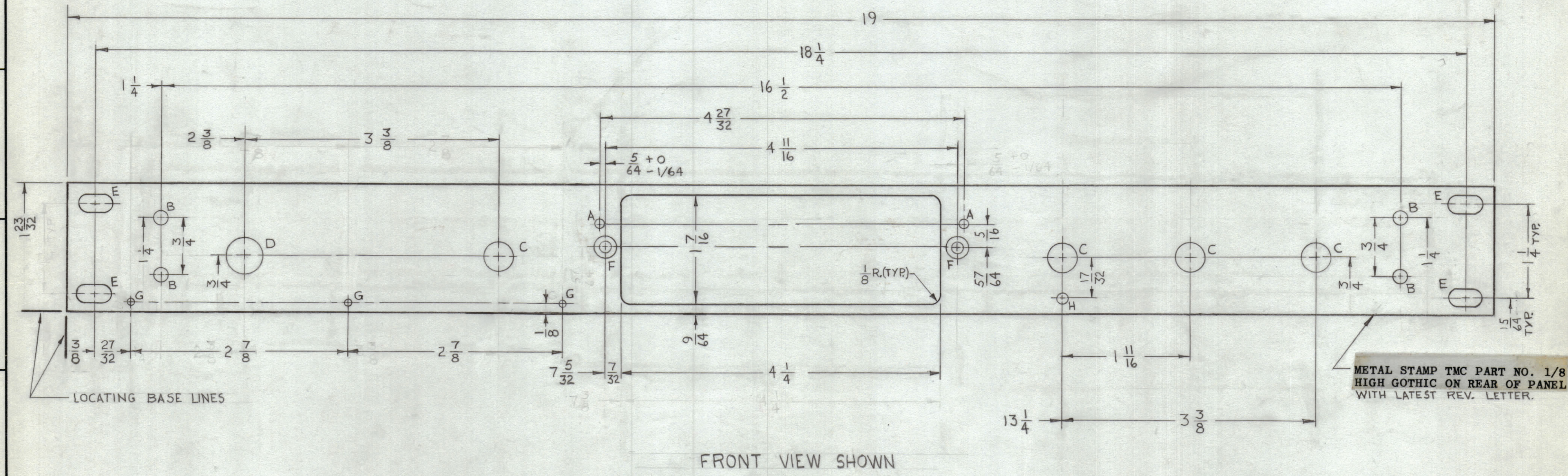


HOLES	REQ
A- 7/64 DIA.	2
B- 11/64 DIA.	4
C- 3/8 DIA.	4
D- 15/32 DIA.	1
E- 1/4 x 7/16 SLOTS	4

HOLES	REQ
F- DRILL #27 THRU. C'SK 82°, .284 DIA. ON FRONT	2
G- .070 DIA.	3
H- 9/64 DIA. x 1/8 DP. FROM REAR OF PANEL	1

REVISIONS						
ZONE	SYM	DESCRIPTION	DATE	E.M.N. NO.	DRAFT	CHKD
	X	EXPERIMENTAL RELEASE	11-9-64	X	J.Z.	
	Ø	ORIGINAL RELEASE FOR PRODUCTION	11-12-64	Ø	J.P.	



METAL STAMP TMC PART NO. 1/8 HIGH GOTHIC ON REAR OF PANEL WITH LATEST REV. LETTER.

**MACHINING:**

- MILL ALL EDGES.
- HOLES MUST BE DRILLED, UNLESS OTHERWISE SPECIFIED.
- LATERAL BOW OF PANEL MUST BE KEPT TO .031 TOLERANCE.
- PANEL MUST BE FREE OF ALL MACHINING MARKS, GOUGES AND SCRATCHES. IF NECESSARY, SAND FRONT OF PANEL WITH NO. 120 GRIT SANDPAPER.

**FINISH NOTES:**

- S404 - IRIDITE 14-2 AL-COAT.
- S114 - ZINC CHROMATE PRIMER) FRONT AND
- S115 - SMOOTH GRAY ENAMEL ) EDGES ONLY

**NOTES**

Q'TY./UNIT	STR-2	MODEL USED ON	ASS'Y. NO.
SCALE	1:1	CODE	A
THE CONTENTS OF THIS DRAWING ARE THE EXCLUSIVE PROPERTY OF THE TECHNICAL MATERIEL CORP. ITS UNAUTHORIZED USE OR REPRODUCTION IN WHOLE OR IN PART IS STRICTLY FORBIDDEN.			

REF: LDI660

REQ'D.	ITEM	PART NUMBER	DESCRIPTION	SYMBOL
<b>LIST OF MATERIAL</b>				
MATERIAL		3/16 THK. ALUMINUM, 2024-T3		
FINISH		SEE NOTES		
THE TECHNICAL MATERIEL CORP.		MAMARONECK, NEW YORK		
TITLE		PANEL, FRONT		
DRAWN	DATE	FINAL APPROVAL	DATE	
CHECKED	DATE			
ELECT. DES.	DATE			
MECH. DES.	DATE			
SHEET		MS4133		Ø
REV. LTR.				