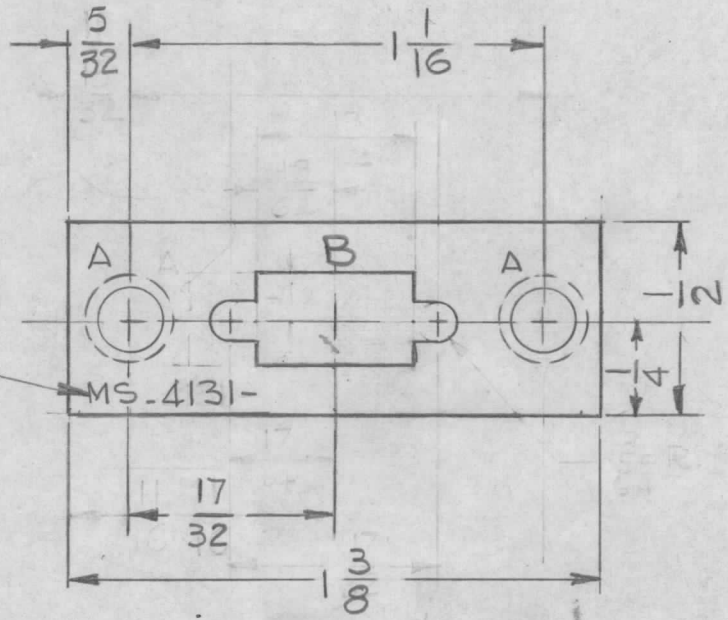


DETAIL "B"



HOLES - REQ.
 A - .161 - .164 DIA. 2
 B - SEE DETAIL 1

1 MOUNT IN 2 "A" HOLES

METAL STAMP TMC P/N.
 1/8 HIGH GOTHIC W/LATEST
 REVISION LETTER

REMOVE ALL BURRS AND SHARP EDGES.
 MOUNT INSERTS AFTER FINISHING

REQ. PER UNIT	MODEL	ASS'Y. NO.	DATE	USED ON									
2	SMRA-1		11-3-64	MS4131 A									
SYM	DESCRIPTION	DATE	CH. NO.	DRAFTS	CHECKER	ENG. APP.	REQ. ITEM	PART NO.	AALTONEN DESCRIPTION	SYMBOL			
A	MODEL WAS SMR-1	2-12-65	13624	22	RU		1	NT129-440-4	NUT, PLAIN, SPLINE	A			
Ø	ORIGINAL RELEASE FOR PRODUCTION	12-1-64	Ø	22				.064 THK	THE TECHNICAL MATERIEL CORP. MAMARONECK, NEW YORK PLATE, MOUNTING CONNECTOR				
X	EXP. RELEASE	11-3-64		GDL				ALUMINUM					
								5052-H32					
								TYPE & TEMPER		HEAT TREAT. SPEC.	DRAWN	CHECKED	FINAL APPROVAL
								S404 YEL IRIDITE					
								FINISH & SPEC. NO.		ELEC. DES. APP.	MECH. DES. APP.		

UNLESS OTHERWISE SPECIFIED
 DIMENSIONS ARE IN INCHES AND INCLUDE
 CHEMICALLY APPLIED OR PLATED FINISHES

DECIMALS: .X ± .05, .XX ± .01, .XXX ± .005
 FRACTIONS: ± 1/64, ANGLES: ± 0° 30'

SCALE: 2:1

CODE: A

5052-H32 —H G.D.L. 11-3-64 @
 S404 YEL IRIDITE Tka
 MS4131 A