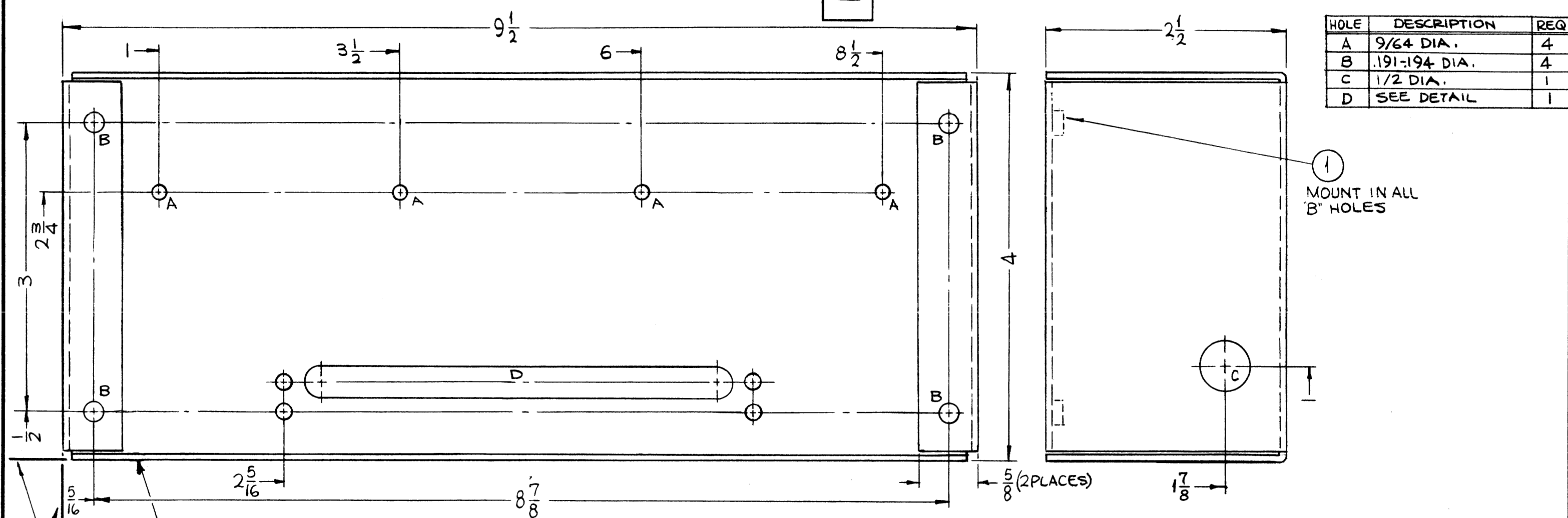


MS4128

REVISIONS					
SYM	DESCRIPTION	DATE	E.M.N. NO.	DRAFT	CHKD APPD
X	EXPERIMENTAL RELEASE	11-6-64	X	SRG	
Ø	ORIGINAL RELEASE FOR PRODUCTION	11-17-64	Ø	SRG	



HOLE	DESCRIPTION	REQ
A	9/64 DIA.	4
B	.191-.194 DIA.	4
C	1/2 DIA.	1
D	SEE DETAIL	1

LOCATING BASE LINES

METAL STAMP TMC PART NO. 1/8 HIGH GOTHIC W/LATEST REV. LETTER.

- UNLESS OTHERWISE SPECIFIED:
1. USE MATERIAL THICKNESS FOR MAXIMUM RADIUS ON ALL BENDS
 2. ALL ANGULAR BENDS 90 DEGREES
 3. REMOVE ALL BURRS AND SHARP EDGES
 4. MOUNT INSERTS AFTER FINISHING

NOTES

1	COPA - 2	
Q'TY./UNIT	MODEL USED ON	ASS'Y. NO.
SCALE 1:1	CODE A	

THE CONTENTS OF THIS DRAWING ARE THE EXCLUSIVE PROPERTY OF THE TECHNICAL MATERIEL CORP. ITS UNAUTHORIZED USE OR REPRODUCTION IN WHOLE OR IN PART IS STRICTLY FORBIDDEN.

REF: LD 1647

4	1	NT 129-632-4	NUT, PLAIN, SPLAIN	B
REQ'D.	ITEM	PART NUMBER	DESCRIPTION	SYMBOL

M. STURMER	LIST OF MATERIAL
MATERIAL .064 THICK ALUMINUM 5052-H32	THE TECHNICAL MATERIEL CORP. MAMARONECK, NEW YORK
FINISH S404 YELLOW IRIDITE	TITLE CHASSIS, FILTER

UNLESS OTHERWISE SPECIFIED DIMENSIONS ARE IN INCHES AND INCLUDE CHEMICALLY APPLIED OR PLATED FINISHES	DRAWN SRG	DATE 11-6-64	FINAL APPROVAL <i>[Signature]</i>	DATE
DECIMALS .X ± .05 .XX ± .01 .XXX ± .005	CHECKED @	DATE 11-16-64	DATE	
FRACTIONS ± 1/64 ANGLES ± 0° 30'	ELECT. DES.	DATE	MS4128	Ø
TOLERANCES	MECH. DES. <i>[Signature]</i>	DATE 11-16-64	SHEET	REV. LTR.