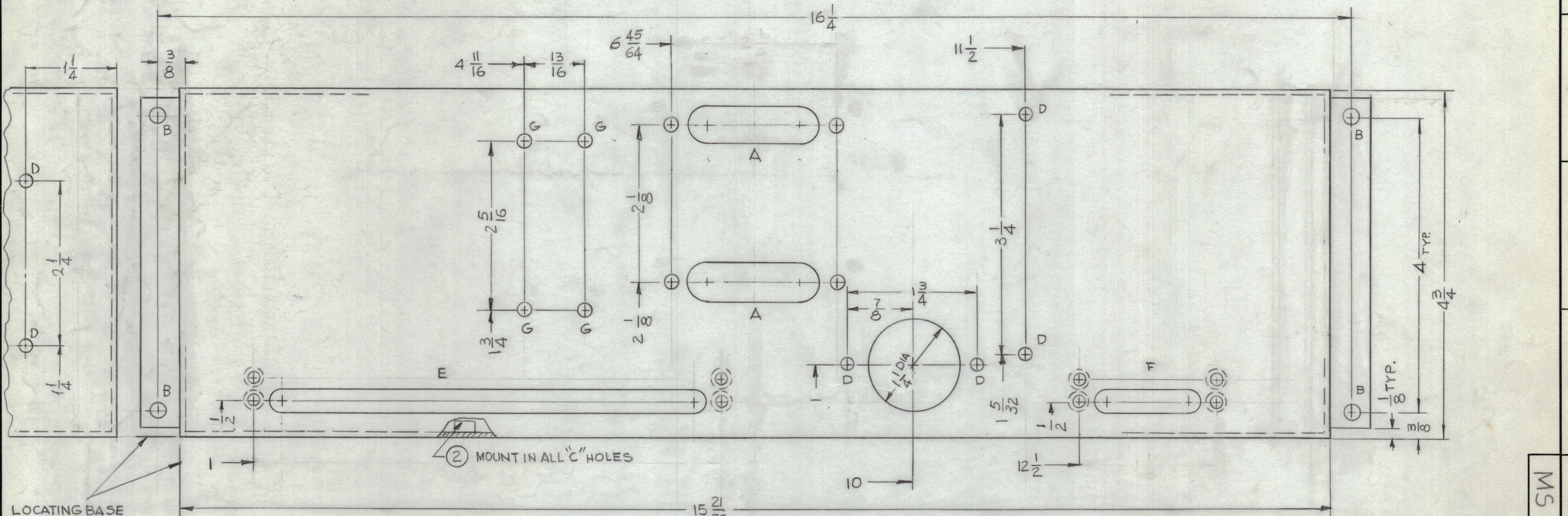
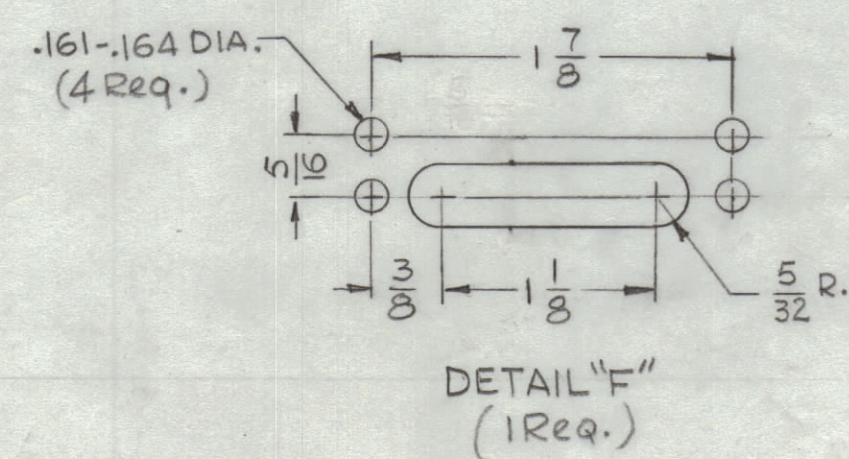




REVISIONS						
ZONE	SYM	DESCRIPTION	DATE	E.M.N. NO.	DRAFT	CHKD
	X	EXP. RELEASE	11-2-64		G.D.L.	
	X1	2 D HOLES ADDED	1-4-65	X1	SRL	
		ORIGINAL RELEASE FOR PRODUCTION	8-23-67		T	



HOLE	DESCRIPTION	REQ.
A	SEE DETAIL	2
B	13/64 DIA.	4
C	.191 - .194 DIA.	8
D	11/64 DIA.	6
E	SEE DETAIL	1
F	SEE DETAIL	1
G	3/16 DIA	4



UNLESS OTHERWISE SPECIFIED:

- USE MATERIAL THICKNESS FOR MAXIMUM RADIUS ON ALL BENDS
- ALL ANGULAR BENDS 90 DEGREES
- REMOVE ALL BURRS AND SHARP EDGES
- MOUNT INSERTS AFTER FINISHING

NOTES

1	LSP-6X	
Q'TY./UNIT	MODEL USED ON	ASS'Y. NO.
SCALE 1:1	CODE A	

THE CONTENTS OF THIS DRAWING ARE THE EXCLUSIVE PROPERTY OF THE TECHNICAL MATERIEL CORP. ITS UNAUTHORIZED USE OR REPRODUCTION IN WHOLE OR IN PART IS STRICTLY FORBIDDEN.

REQ'D.	ITEM	PART NUMBER	DESCRIPTION	SYMBOL
8	2	NT129-632-4	NUT, PLAIN, SPLINE	C
8	1	NT129-440-4	NUT, PLAIN, SPLINE	E & F

STURMER LIST OF MATERIAL

MATERIAL	.081 THK. ALUMINUM 5052-H32	THE TECHNICAL MATERIEL CORP. MAMARONECK, NEW YORK	
FINISH	SA04 YEL. IRIDITE	TITLE CHASSIS, POWER SUPPLY	

UNLESS OTHERWISE SPECIFIED DIMENSIONS ARE IN INCHES AND INCLUDE CHEMICALLY APPLIED OR PLATED FINISHES	DRAWN G.D.L.	DATE 11-2-64	FINAL APPROVAL	DATE
DECIMALS .X ± .05 .XX ± .01 .XXX ± .005	CHECKED G. Jensen	DATE 11-12-64	MS4116	
FRACTIONS ± 1/64 ANGLES ± 0° 30'	ELECT. DES.	DATE		
TOLERANCES	MECH. DES.	DATE		

SHEET