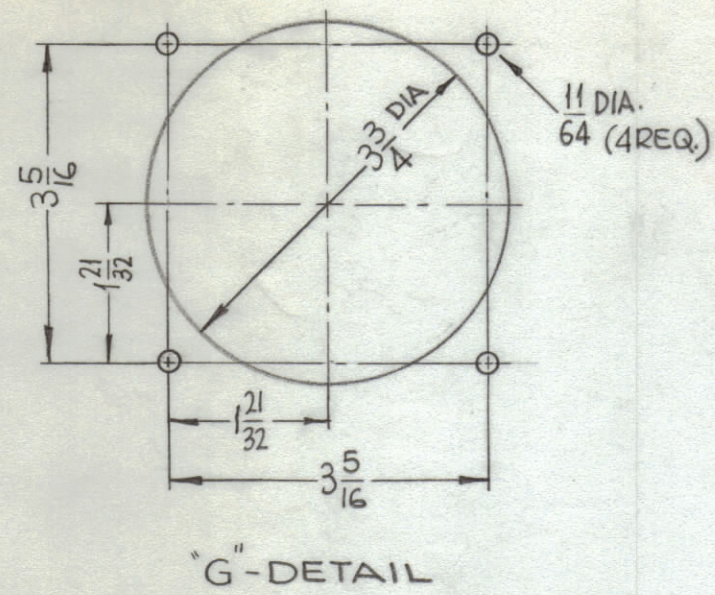
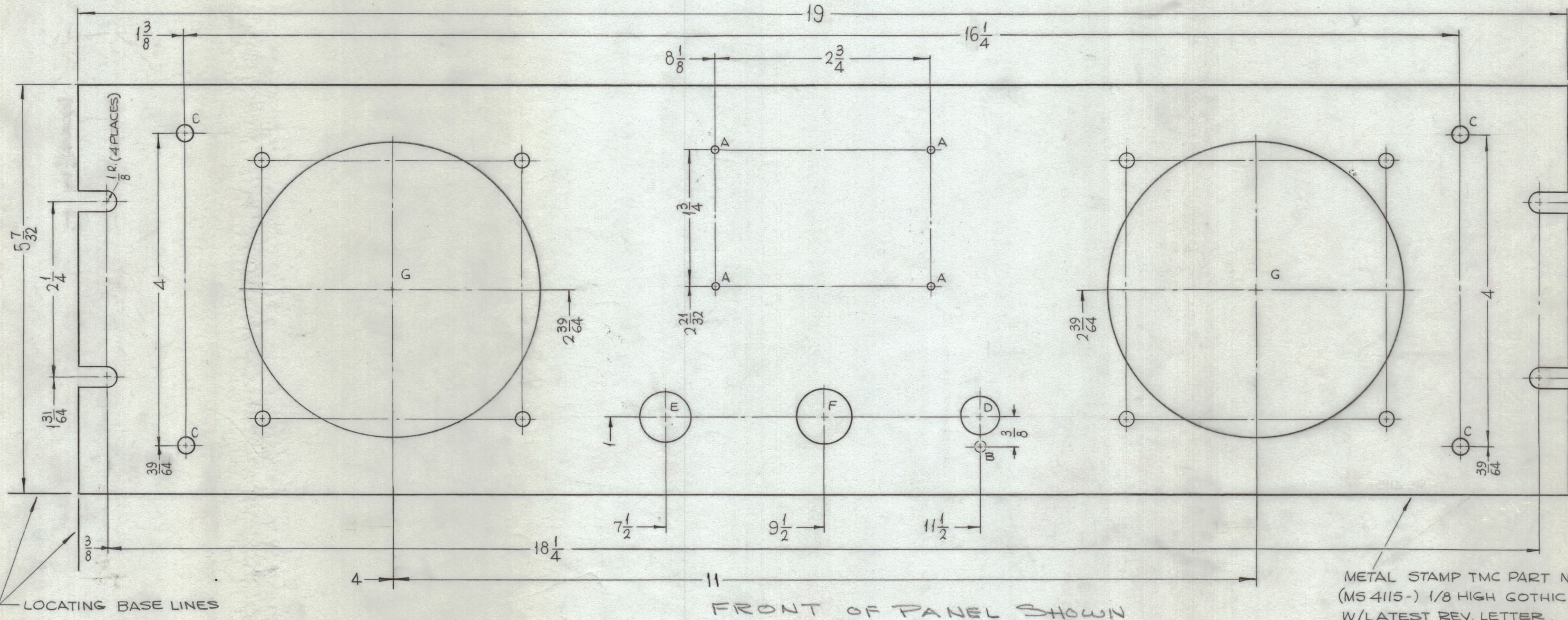


HOLE	DESCRIPTION	REQ.
A	.076 DIA.	4
B	1/8 DIA. X 1/8 DEEP (ON REAR)	1
C	13/64 DIA.	4
D	31/64 DIA.	1
E	5/8 DIA.	1
F	11/16 DIA.	1
G	SEE DETAIL	2



REVISIONS						
ZONE	SYM	DESCRIPTION	DATE	E.M.N. NO.	DRAFT	CHKD
X		EXPERIMENTAL RELEASE	11-2-64	X	SRG	
Ø		ORIGINAL RELEASE FOR PRODUCTION	8-23-65	+	SRG	



**MACHINING:**

- MILL ALL EDGES.
- Holes must be drilled, unless otherwise specified.
- LATERAL BOW OF PANEL MUST BE KEPT TO .031 TOLERANCE.
- PANEL MUST BE FREE OF ALL MACHINING MARKS, GOUGES AND SCRATCHES. IF NECESSARY, SAND FRONT OF PANEL WITH NO. 120 GRIT SANDPAPER.

**FINISH NOTES:**

- S404 - IRIDITE 14-2 AL-COAT.
- S114 - ZINC CHROMATE PRIMER } FRONT AND
- S115 - SMOOTH GRAY ENAMEL } EDGES ONLY

REF: LD 1646-

REQ'D.	ITEM	PART NUMBER	DESCRIPTION	SYMBOL
	M. STURMER		LIST OF MATERIAL	
MATERIAL		3/16 THICK ALUMINUM 2024-T3		
FINISH		SEE NOTES		
		THE TECHNICAL MATERIEL CORP. MAMARONECK, NEW YORK		
		PANEL, FRONT		
DRAWN	SRG	DATE	11-2-64	FINAL APPROVAL
CHECKED	SRG	DATE	11-12-64	
ELECT. DES.		DATE		
MECH. DES.		DATE		
		MS4115		
		SHEET		REV. LTR.

Q'TY./UNIT	MODEL USED ON	ASS'Y. NO.
1	LSP-GX	
SCALE	CODE	
1:1	A	

THE CONTENTS OF THIS DRAWING ARE THE EXCLUSIVE PROPERTY OF THE TECHNICAL MATERIEL CORP. ITS UNAUTHORIZED USE OR REPRODUCTION IN WHOLE OR IN PART IS STRICTLY FORBIDDEN.

NOTES

MS4115