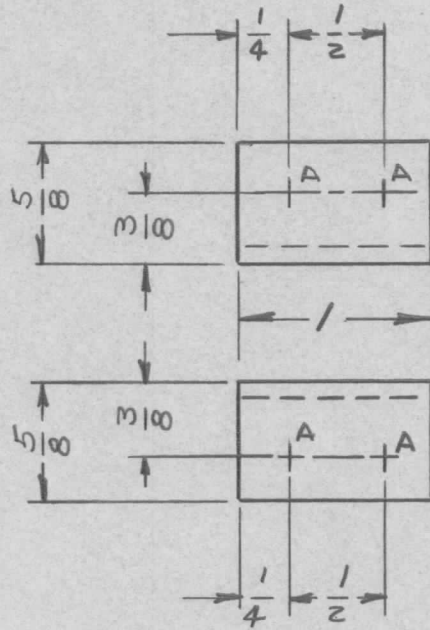


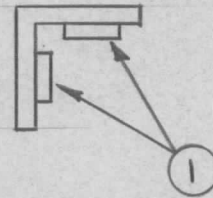
UNLESS OTHERWISE SPECIFIED:

1. USE MATERIAL THICKNESS FOR MAXIMUM RADIUS ON ALL BENDS
2. ALL ANGULAR BENDS 90 DEGREES
3. REMOVE ALL BURRS AND SHARP EDGES
4. MOUNT INSERTS AFTER FINISHING

REQ. PER UNIT	USED ON			MS4114	Ø
	MODEL	ASS'Y. NO.	DATE		
4	RTIA-1	A4063	1-25-65		



HOLE	DESCRIPTION	REQ
A	.191-.194 DIA	4



1 MOUNT IN ALL "A" HOLES AS SHOWN AFTER FINISHING.

REQ. ITEM	PART NO.	DESCRIPTION	SYMBOL	
4	1	NT129-632-4	NUT, PLAIN, SPLINE	A
		.081 THK	THE TECHNICAL MATERIEL CORP.	
		STOCK SIZE	MAMARONECK, NEW YORK	
		ALUMINIUM	BRACKET, MTG -	
		MATERIAL	REINFORCING BRACE	
UNLESS OTHERWISE SPECIFIED DIMENSIONS ARE IN INCHES AND INCLUDE CHEMICALLY APPLIED OR PLATED FINISHES		SCALE		
DECIMALS .X ± .05 .XX ± .01 .XXX ± .005		FRACTIONS ± 1/64 ANGLES ± 0° 30'	CODE A	
TOLERANCES				
5052-H32		HEAT TREAT. SPEC.		
3104 YELLOW IRDTE		FINISH & SPEC. NO.		
DRAWN J. E. Sator 2/8/65		CHECKED W. JORDAN 2/8/65	FINAL APPROVAL MS4114	
ELEC. DES. APP.		MECH. DES. APP.		