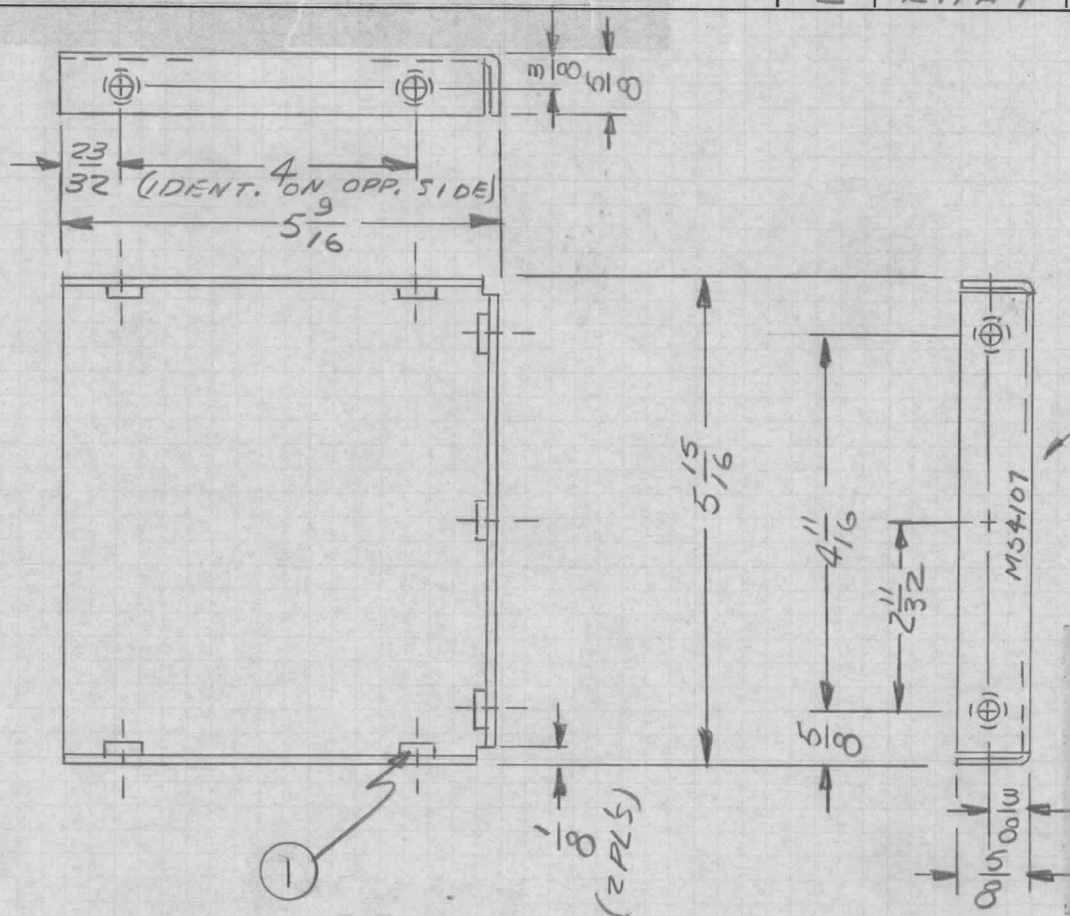


REQ. PER UNIT	USED ON			MS4107 Ø
	MODEL	ASS'Y. NO.	DATE	
2	RTPA-1	A4050	11-4-64	



ALL HOLES
.221-.224 DIA. - 7 REQ.

METAL STAMP TMC P/N.
W/LATEST REVISION LETTER,
1/8 GOTHIC.

UNLESS OTHERWISE SPECIFIED:

1. USE MATERIAL THICKNESS FOR MAXIMUM RADIUS ON ALL BENDS
2. ALL ANGULAR BENDS 90 DEGREES
3. REMOVE ALL BURRS AND SHARP EDGES
4. MOUNT INSERTS AFTER FINISHING

MOUNT IN ALL "A" HOLES

						7	1	NT129-832-4	NUT, PLAIN, SPLINE	
						REQ. ITEM		PART NO.	EATON	DESCRIPTION SK-3071-M5-7
								.081 THK	THE TECHNICAL MATERIEL CORP. MAMARONECK, NEW YORK	
								ALUMINUM	BRACKET, MTG, SUPPORT (P.C. CARD BIN)	
								5052-H32		J.L.
								TYPE & TEMPER	HEAT TREAT. SPEC.	DRAWN
								YELLOW IRIDITE		W. JORDAN
								FINISH & SPEC. NO.		MECH. DES. APP.
										MS4107 Ø

ORIGINAL RELEASE FOR PRODUCTION 2-10-65
EXPER. RELEASE 1-26-65
UNLESS OTHERWISE SPECIFIED DIMENSIONS ARE IN INCHES AND INCLUDE CHEMICALLY APPLIED OR PLATED FINISHES
SCALE 4
TOLERANCES
DECIMALS .X ± .05 .XX ± .01 .XXX ± .005
FRACTIONS ± 1/64 ANGLES ± 0° 30'

DATE CH. NO. DRAFTS CHECKER ENG. APP.
2-10-65 22 JCS
1-26-65 X 88 JM
UNLESS OTHERWISE SPECIFIED DIMENSIONS ARE IN INCHES AND INCLUDE CHEMICALLY APPLIED OR PLATED FINISHES
SCALE 4
CODE A

7 1 NT129-832-4 NUT, PLAIN, SPLINE
REQ. ITEM PART NO. EATON DESCRIPTION SK-3071-M5-7 SYMBOL
.081 THK STOCK SIZE THE TECHNICAL MATERIEL CORP. MAMARONECK, NEW YORK
ALUMINUM BRACKET, MTG, SUPPORT (P.C. CARD BIN)
5052-H32 -4 J.L. JM JCS RJC
TYPE & TEMPER HEAT TREAT. SPEC. DRAWN CHECKED FINAL APPROVAL
YELLOW IRIDITE F.C. Eaton W. JORDAN
5909 2/8/65 2/8/65
FINISH & SPEC. NO. ELEC. DES. APP. MECH. DES. APP. MS4107 Ø