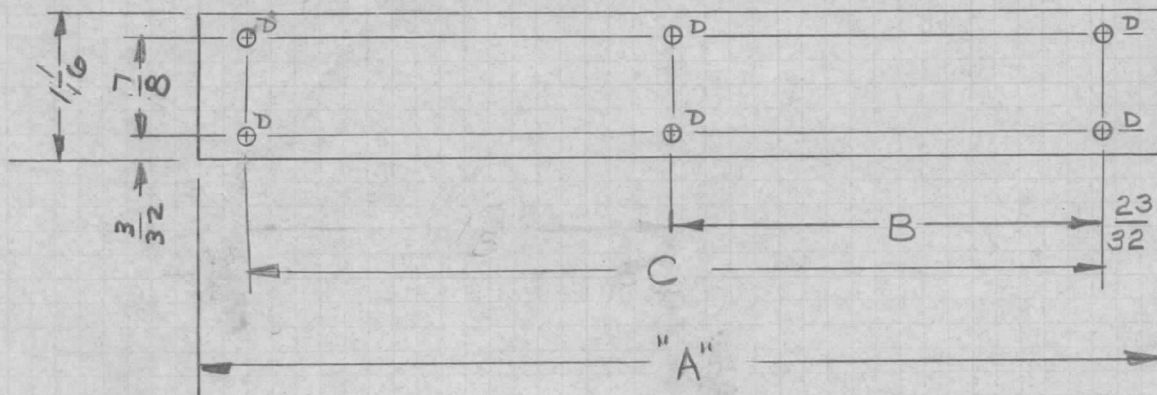


TMC PART NO.	DIM. "A"	DIM. "B"	USED ON	C	D		REQ. PER UNIT	USED ON			
					SIZE	QTY.		MODEL	ASS'Y. NO.	DATE	
MS4101-1	5-1/16	1 7/8	RTRS-1	3 3/4	3/32	6	1	RTRS-1			MS 4101 B
MS4101-2	5-11/16	1 7/8	RTRS-1B	3 3/4	3/32	6					
MS4101-3	4-1/2	1 7/8	RTRS-209	—	3/32	4					
MS4101-4	3-7/8	1 7/8	RTRS-216	—	3/32	4					
MS4101-5	2-5/8	1 7/8	RTRS-236	—	3/32	4					



METAL STAMP TMC PART NO.
1/8 HIGH GOTHIC ON REAR WITH
LATEST REVISION LETTER.

FINISH NOTES:

1. S404 - IRIDITE 14-2 AL-COAT.
2. S114 - ZINC CHROMATE PRIMER) FRONT AND
3. S115 - SMOOTH GRAY ENAMEL) EDGES ONLY

SYM	DESCRIPTION	DATE	CH. NO.	DRAFTS	CHECKER	ENG. APP.	REQ. ITEM	PART NO.	DESCRIPTION	SK-3011-MS-1	SYMBOL
B	-3 4/8, 1 7/8, RTRS-209, 3/32, 4 COL- CHD, 3 3/8, 1 7/8, RTRS-216, 3/32, 4 ADD	7-7-65	14402	JL	JCB	JCB					
A	P/N CHART ADD; ON PICT'S LETTERS WERE DIM; METAL STAMP NOTE ADD.	2-3-65	13412	JL	JCB			.031 THK		THE TECHNICAL MATERIEL CORP. MAMARONECK, NEW YORK	
Ø	ORIGINAL RELEASE FOR PRODUCTION	1-12-65	Ø	JL				STOCK SIZE			
X ₁	1 1/16 DIM WAS 1; 7/8 WAS 3/16 19/32 WAS 5/8; 5/16	11-25-64		JL		W.S.		ALUMINUM		COVER, CUTOUT, SWITCH (FRONT PANEL)	
								MATERIAL			
								5052-H32	JL	©	JCB
								TYPE & TEMPER			
								HEAT TREAT. SPEC.			
								DRAWN	J. E. Eaton	W. JORDAN	
								CHECKED	1/12/65	1/12/65	
								FINAL APPROVAL			
								FINISH & SPEC. NO.	SEE NOTES		
								ELEC. DES. APP.			
								MECH. DES. APP.			
										MS 4101	B