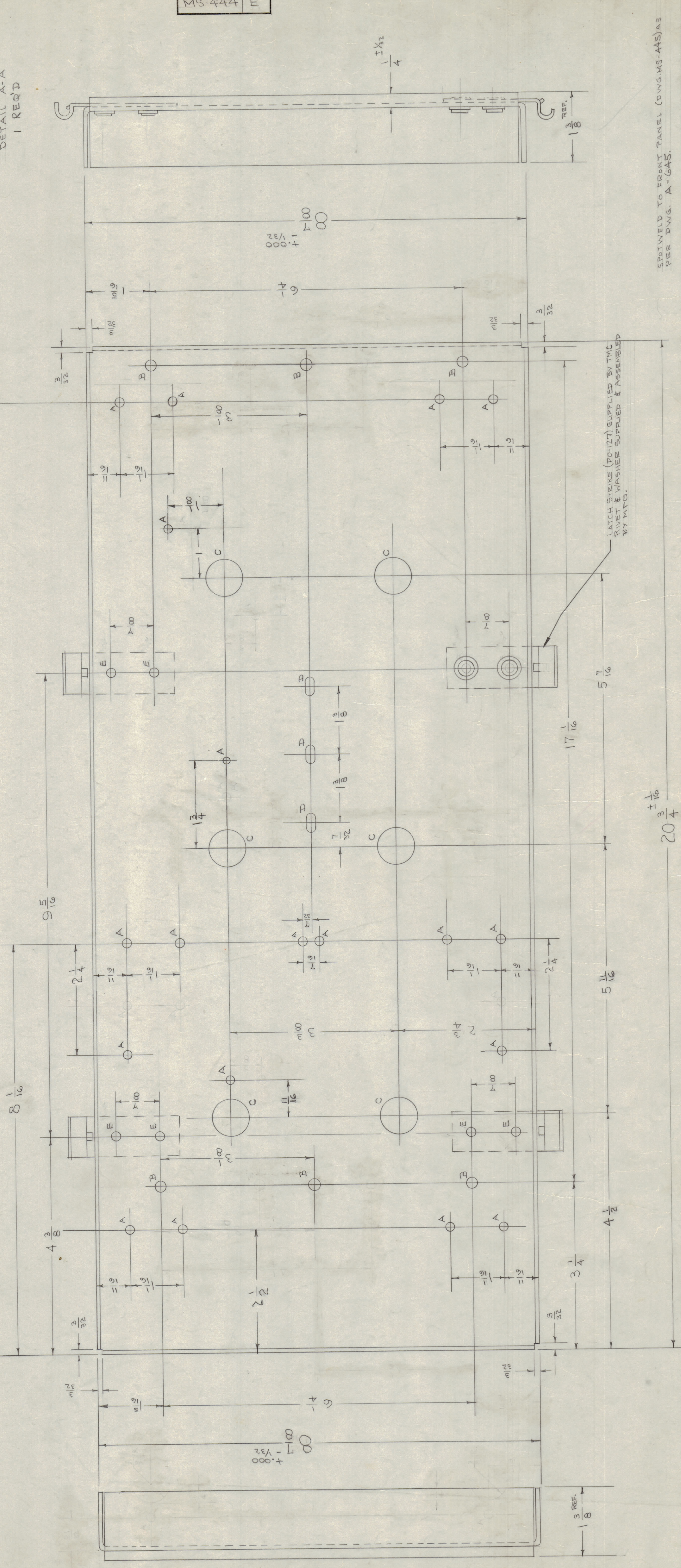
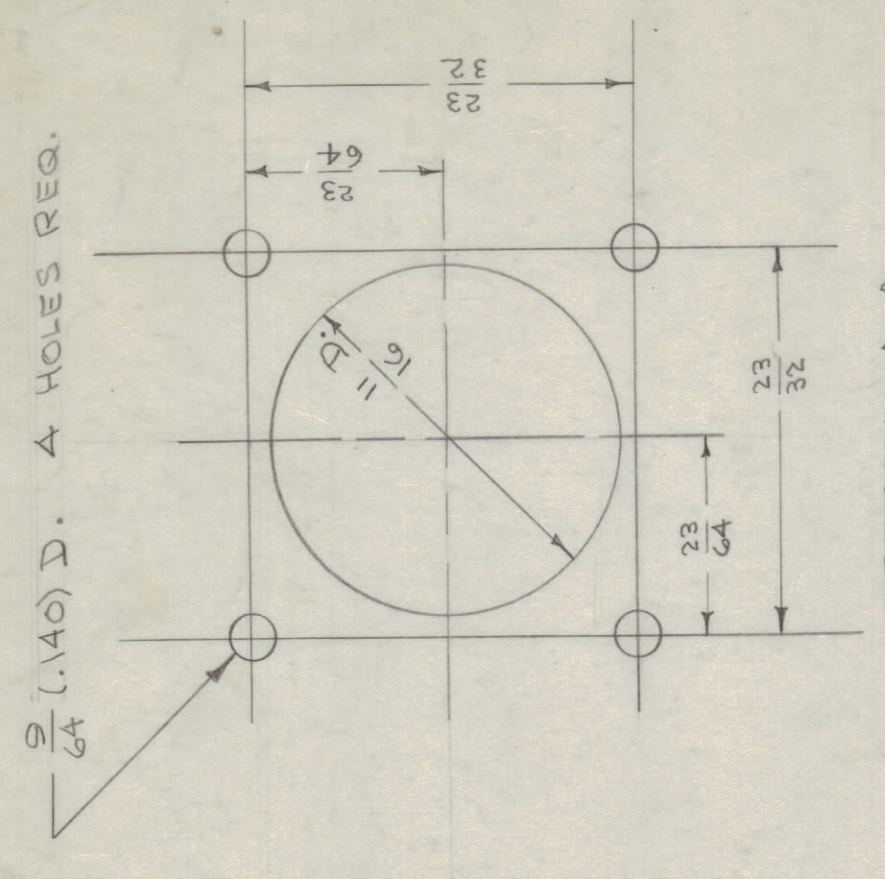


THE BUYER AGREES TO CHANGE ANY TOLERANCE OF OTHER DETAIL SPECIFIED ON THIS DRAWING NOTIFY THE PURCHASER PROMPTLY.
 MAXIMUM ALLOWABLE TOLERANCES HAVE BEEN DETERMINED AND SHOWN ON THIS DRAWING.
 REMOVE ALL BURRS AND SHARP EDGES.

NOTICE TO PERSONS RECEIVING THIS DRAWING
 THE TECHNICAL MATERIEL CORPORATION claims proprietary right in the designs disclosed hereon. This drawing and any data thereon may not be reproduced or used in any way without the written consent of THE TECHNICAL MATERIEL CORPORATION. This drawing is loaned for mutual assistance and is subject to recall at any time.

Property of:
 THE TECHNICAL MATERIEL CORPORATION
 MAMARONECK, NEW YORK

MS-444 E



SPOTWELDED TO FRONT PANEL (DWG. MS-445) AS PER DWG. A-645.

- A - 3/16 (.1875) D. 19 HOLES REQ.
- B - 1/4 (.250) D. 7 " "
- C - 3/4 (.750) D. 6 " "
- D - 5/32 x 5/16 SLOT 3 SLOTS " "
- E - 9/32 (.28125) D. 8 HOLES

ISSUE	ITEM	CHANGED FROM	DATE	BY	CHECKER	ENG. APP.
E	1	LATCHES ADDED	4/21/51	5	16	16
D	2	3" HOLES MOVED	4/21/51	WDC	WDC	WDC
C	1	1/4" HOLES MOVED	7/19/51	WDC	WDC	WDC
B	1	13/16" HOLES ADDED	4/21/51	WDC	WDC	WDC
A	1	2 1/4" HOLES ADDED	4/21/51	WDC	WDC	WDC

REQ. ITEM	PART NO.	DESCRIPTION	SYMBOL
16 GA. (.0625)		THE TECHNICAL MATERIEL CORP. MAMARONECK, NEW YORK	
STEEL		BOTTOM CHASSIS	
MATERIAL		TAC-1	
WEIGHTS PC			
TYPE & TEMPER			
HEAT TREAT SPEC.			
FINISH & SPEC. NO.			

RES. PER UNIT	MODEL	PROJECT NO.	DATE
1	TAC-1	132	12-28-53

ABST. NO.	USED ON
A-645	

SCALE	TOLERANCES
DRILL PUNCH, COMMERCIAL STOCK	DEC. DIM. ± 1/4
OTHER DIM. ± 1/8	ANGULAR DIM. ± 1/4
TOLERANCES ARE NOT INCLUDED.	