

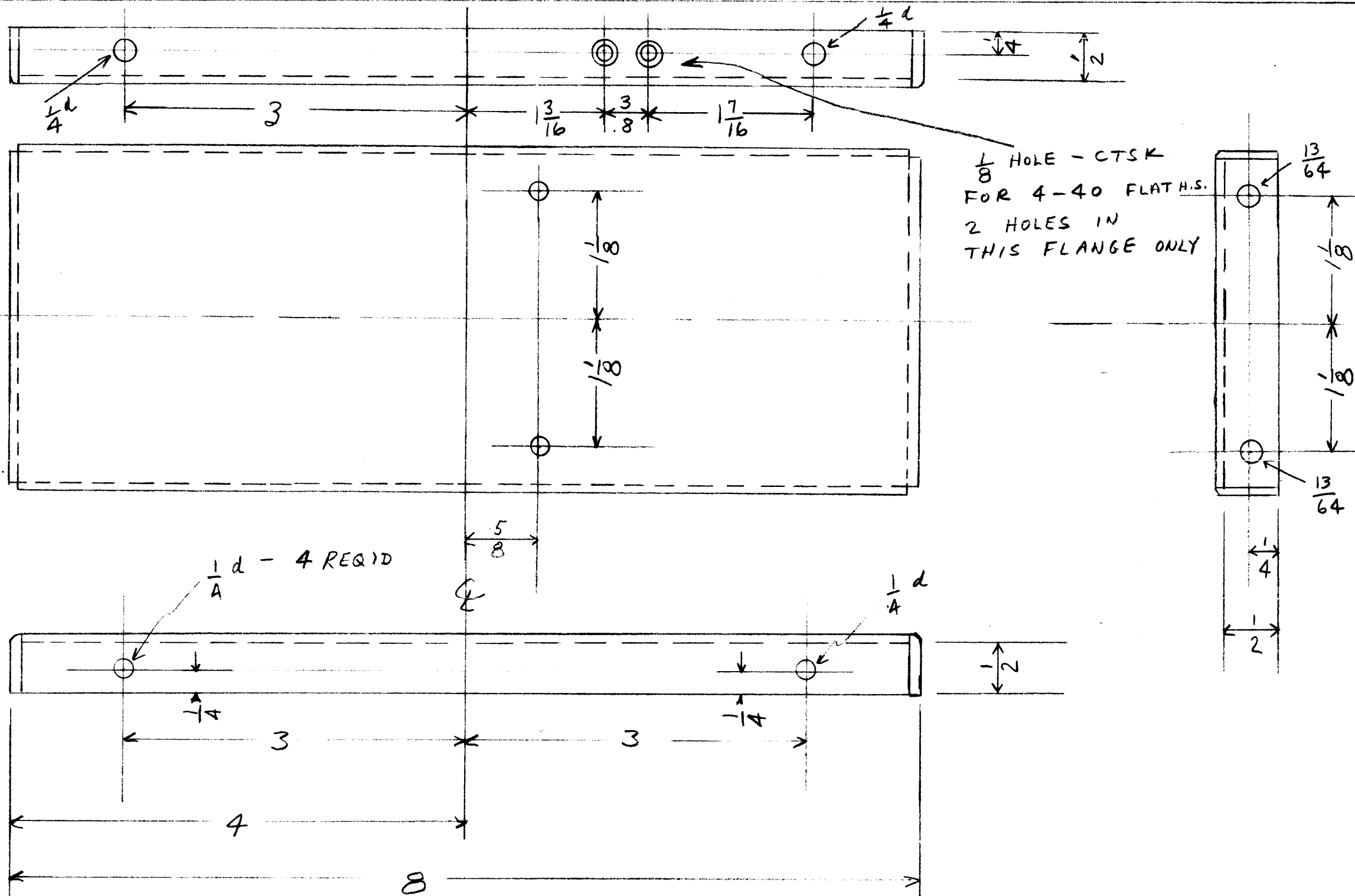
NOTICE TO PERSONS RECEIVING THIS DRAWING

THE TECHNICAL MATERIEL CORPORATION claims proprietary right in the material disclosed hereon. This drawing is issued in confidence for engineering information only and may not be reproduced or used in manufacture anything shown hereon without permission from THE TECHNICAL MATERIEL CORPORATION to the user. This drawing is loaned for mutual assistance and is subject to recall at any time.

Property of:

THE TECHNICAL MATERIEL CORPORATION
MAMARONECK, NEW YORK

TWO PER UNIT
USE: 16 GA $\frac{1}{4}$ HARD ALUM.
FINISH: ALKALI ETCH & LACQUER
MATERIAL SIZE 4 X 8 $\frac{29}{32}$



8
OUTSIDE
AFTER BENDING

SIDE CHASSIS ELEMENT TONE TERMINAL TRANSMIT TKM-TC	
THE TECHNICAL MATERIEL CORPORATION MAMARONECK, NEW YORK	
DATE: JAN 13, 1951	CHKD. RB
DRAWN: P.B.	APPD. JM
SHEET OF	No. 45-419

WAS BMSOLD
1/26/54