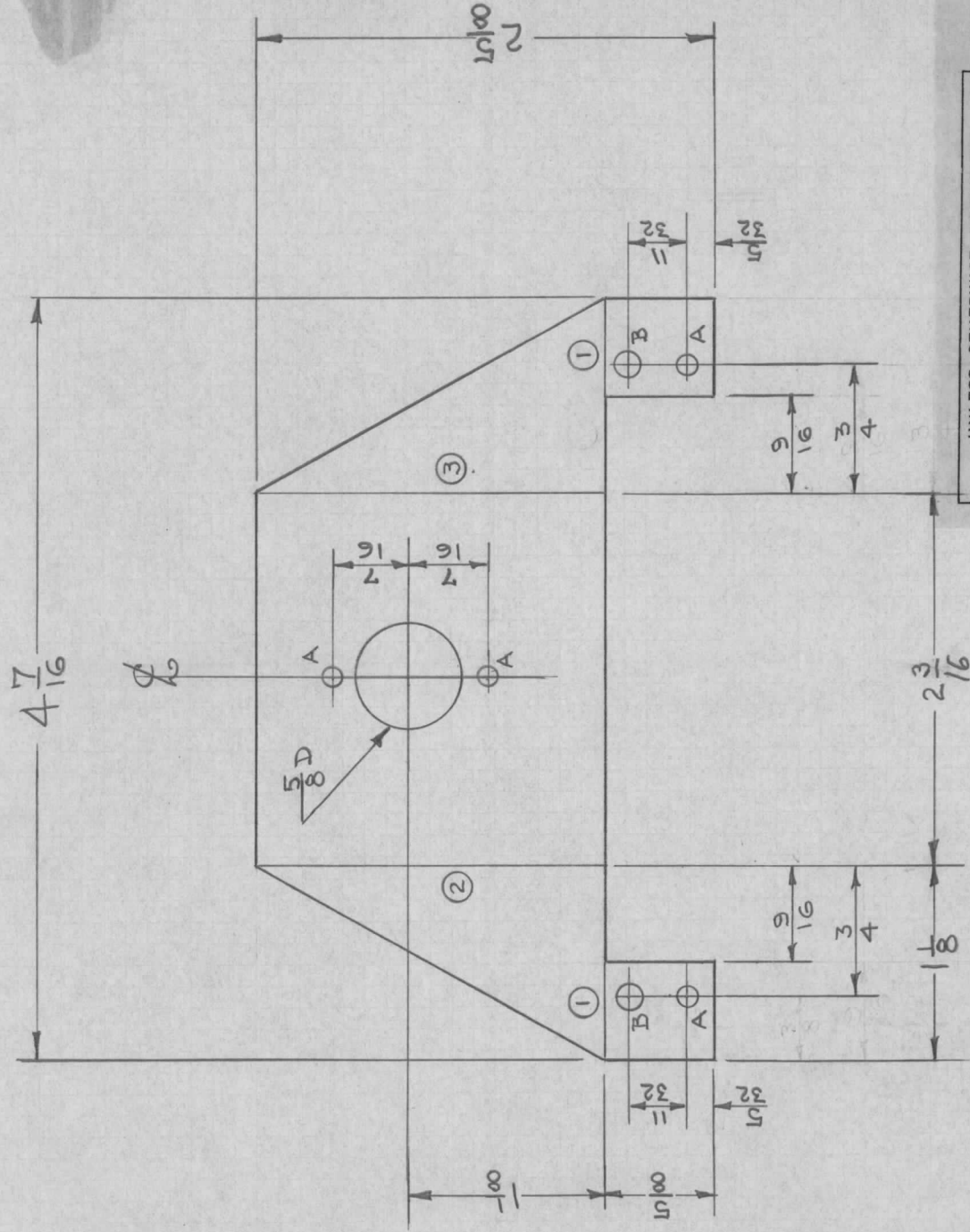


MS-4116

- Bending Procedure
 Bend ① Up Holding Lip
 Bend ② Up Holding Lip
 Bend ③ Up Holding Lip



Note:
 Stamp GAL5 on Bracket.
 V22

Required: One Per Unit
 Finish: Alkali Etch & Lacquer
 Material: 525-H32 Aluminum .051

CUT HERE
 2-66

UNLESS OTHERWISE SPECIFIED DIMENSIONS ARE IN INCHES AND INCLUDE CHEMICALLY APPLIED OR PLATED FINISHES	
DECIMALS	FRACTIONS
.X ± .05	± 1/64
.XX ± .01	ANGLES
.XXX ± .005	± 0° 30'

Legend
 A = $9/64$ - 4 Holes
 B = $11/64$ - 2 Holes.

REF: A-648

DATE 4-9-52

DRN. JADe

CHKD. PM

APPD. PM

TUBE BRACKET
 Osc. Modification Kit
 First Run Serial # 101-162
 Model CFA

THE TECHNICAL MATERIEL
 CORPORATION
 MAMARONECK, NEW YORK

SHEET OF

NO. MS-416