

IF IT IS FOUND DESIRABLE TO CHANGE ANY TOLERANCE OR OTHER DETAIL SPECIFIED ON THIS DRAWING NOTIFY THE PURCHASER PROMPTLY.

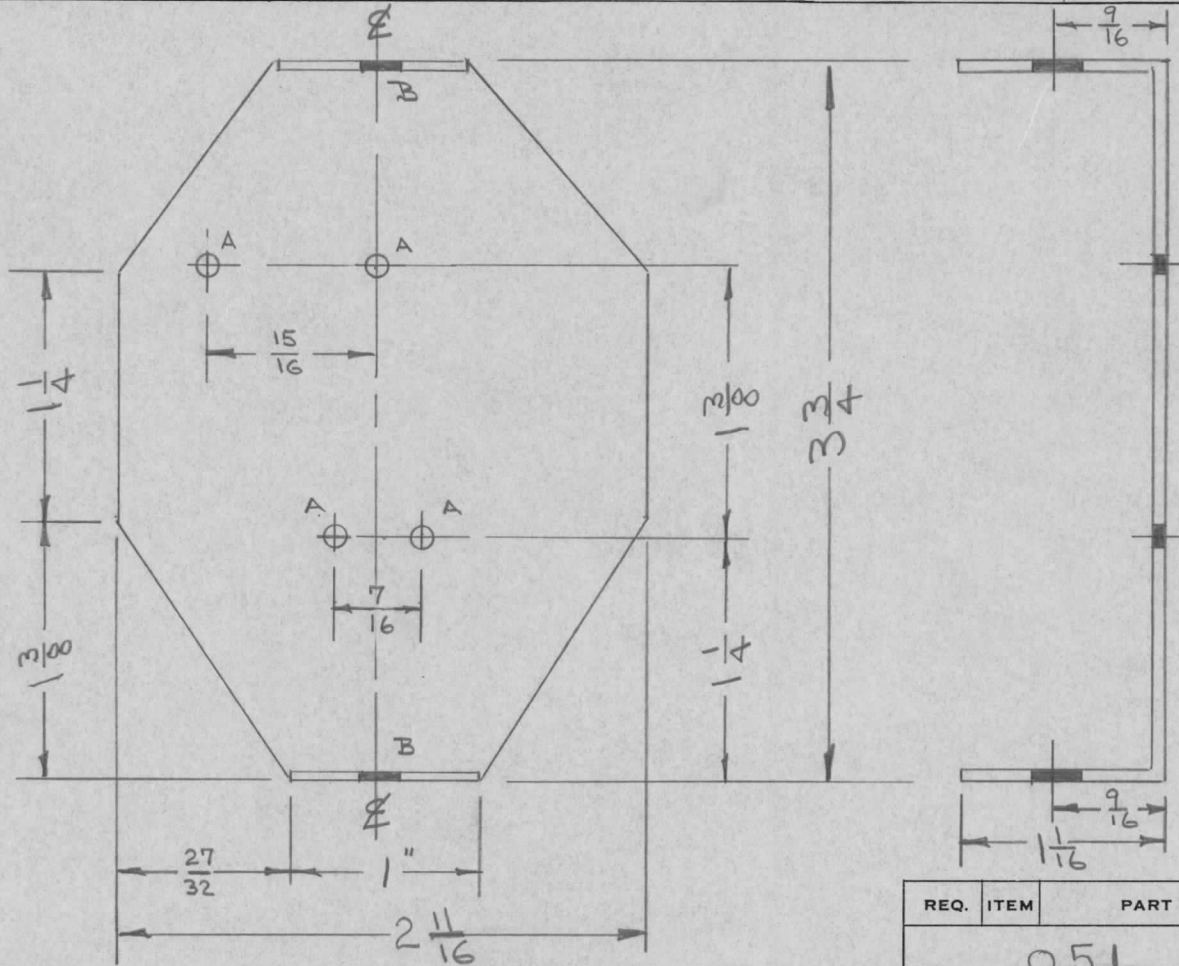
MS-415 A

MAXIMUM ALLOWABLE TOLERANCES HAVE BEEN DETERMINED AND DEVIATIONS WILL BE CAUSE FOR REJECTION. REMOVE ALL BURRS AND SHARP EDGES

REQ. PER UNIT

USED ON

MODEL	PROJECT NO.	ASS'Y. NO.	DATE
DAC	180	A-G23	12-9-53



A = 1/8 D = 4 HOLES
 B = 5/16 D = 2 HOLES

REQ.	ITEM	PART NO.	DESCRIPTION	SYMBOL
		.051	THE TECHNICAL MATERIEL CORP.	
		STOCK SIZE	MAMARONECK, NEW YORK	
		ALUMINUM	MOUNTING PLATE	
		MATERIAL	WEIGHT PER PC.	
		52S-H32	DAC	
		TYPE & TEMPER	<i>H.A.D.</i>	<i>APP</i>
		HEAT TREAT. SPEC.	<i>C.D.D.</i>	<i>APP</i>
		FINISH & SPEC. NO.	CHECKED	FINAL APPROVAL
				MS-415 A

A	1	S404-IRIDITE WAS S101-CAUSTIC DIP	12-7 59	1001	P	EMN	
ISSUE	ITEM	CHANGED FROM	DATE	CN. NO.	DRAFTS	CHECKER	ENG. APP.

TOLERANCES

SCALE

DRILL, PUNCH, COMMERCIAL STOCK
 SIZES AND MANUFACTURERS
 TOLERANCES ARE NOT INCLUDED.

ALL OTHERS
 DEC. DIM. ±
 FRAC. DIM. ± 1/64
 ANGULAR DIM. ±