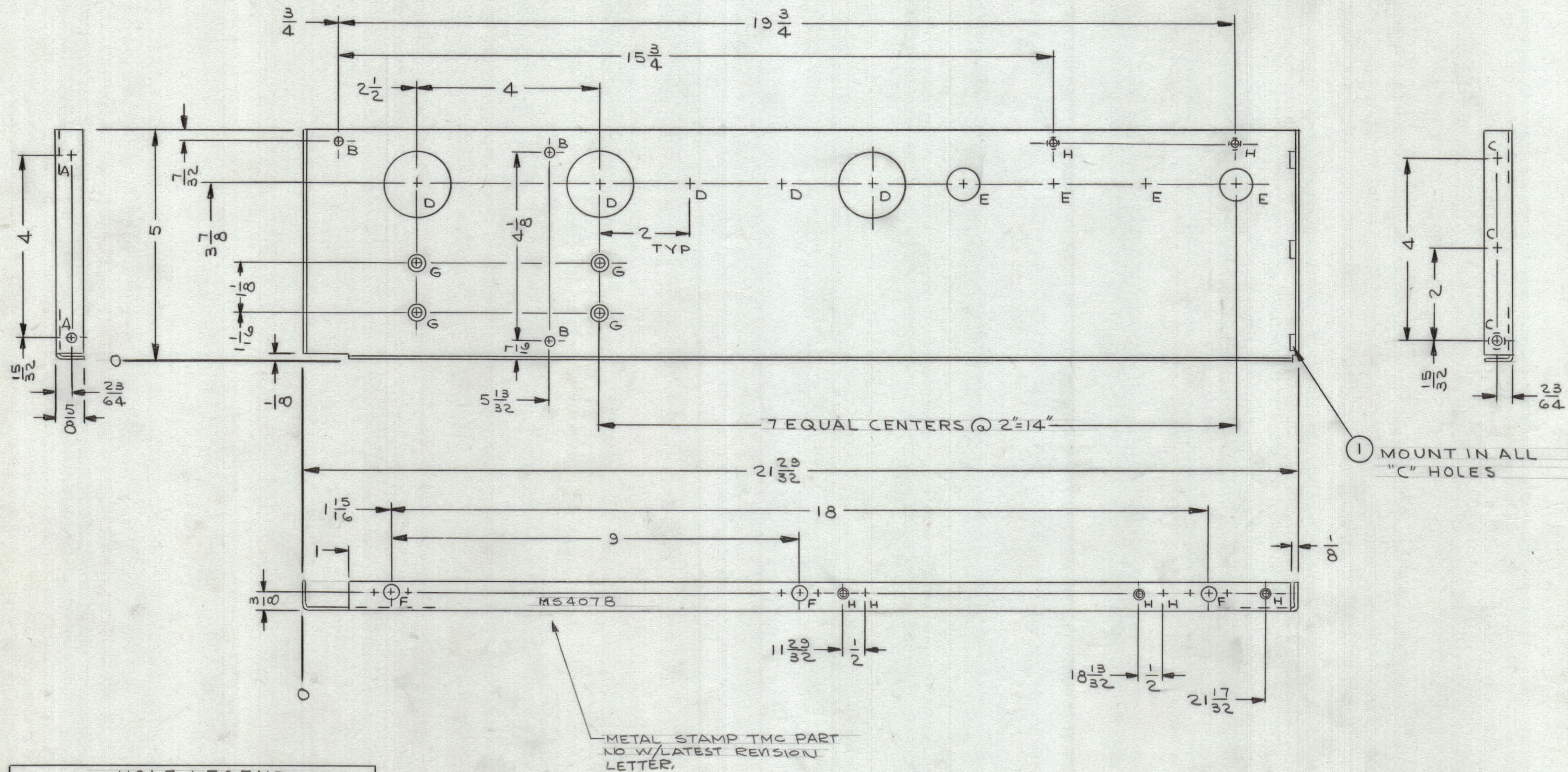


REVISIONS						
ZONE	SYM	DESCRIPTION	DATE	E.M.N. NO.	DRAFT	CHKD APPD
X ₃		REDRAWN, NO CHANGES	1/14/65		JL	JM
Ø		ORIGINAL RELEASE FOR PRODUCTION	2/12/65	Ø	HCA	d.M.

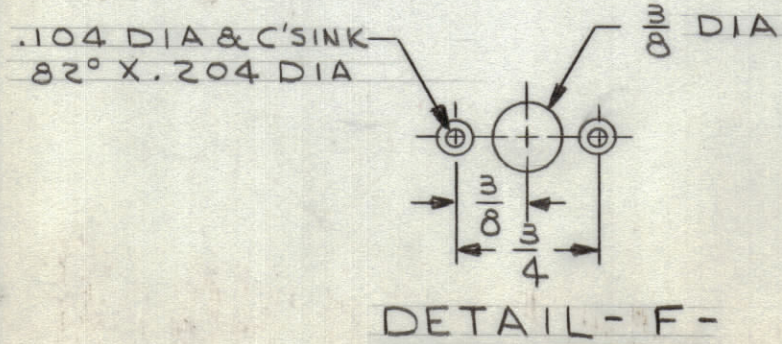


① MOUNT IN ALL "C" HOLES

MS4078 Ø

METAL STAMP TMC PART NO. W/LATEST REVISION LETTER.

HOLE LEGEND		
HOLE	DESCRIPTION	REQ'D
A	13/64 DIA	2
B	3/16 DIA	3
C	.221-.224 DIA	3
D	1/2 DIA	5
E	3/4 DIA	4
F	SEE DETAIL	3
G	.196 DIA & C'SINK 82° X .390 DIA.	4
H	.144 DIA & C'SINK 82° X .284 DIA	7



- UNLESS OTHERWISE SPECIFIED:
- USE MATERIAL THICKNESS FOR MAXIMUM RADIUS ON ALL BENDS
 - ALL ANGULAR BENDS 90 DEGREES
 - REMOVE ALL BURRS AND SHARP EDGES
 - MOUNT INSERTS AFTER FINISHING

NOTES

1	RTIA-1	A4060
Q'TY./UNIT	MODEL USED ON	ASSY. NO.
SCALE	CODE	
1:2	A	

THE CONTENTS OF THIS DRAWING ARE THE EXCLUSIVE PROPERTY OF THE TECHNICAL MATERIEL CORP. ITS UNAUTHORIZED USE OR REPRODUCTION IN WHOLE OR IN PART IS STRICTLY FORBIDDEN.

2	5	WLWE 0378N	WASH., LY., EXT.	
2	4	NTH0348N6	NUT, PLN., HEX.	
2	3	SCBP0348N5	SCREW, MACH	
3	1	NT129-832-4	NUT, ROUND, SWAGE TYPE	
REQ'D.	ITEM	PART NUMBER	DESCRIPTION	SYMBOL
F. E. EATON LIST OF MATERIAL				
MATERIAL		THE TECHNICAL MATERIEL CORP.		
.081THK ALUMINUM 5052-H32		MAMARONECK, NEW YORK		
FINISH		TITLE		
YELLOW IRIDITE PER S404		PLATE, SIDE-LEFT		
UNLESS OTHERWISE SPECIFIED DIMENSIONS ARE IN INCHES AND INCLUDE CHEMICALLY APPLIED OR PLATED FINISHES		DRAWN	DATE	FINAL APPROVAL
		J. LESHINSKI	1/14/65	
		CHECKED	DATE	
		JM	2/19/65	
		ELECT. DES.	DATE	
		MECH. DES.	DATE	
		W. JORDAN	2/18/65	
DECIMALS		FRACTIONS		
.X ± .05		± 1/64		
.XX ± .01		ANGLES		
.XXX ± .005		± 0° 30'		
TOLERANCES		SHEET		
		MS4078		
		REV. LTR.		