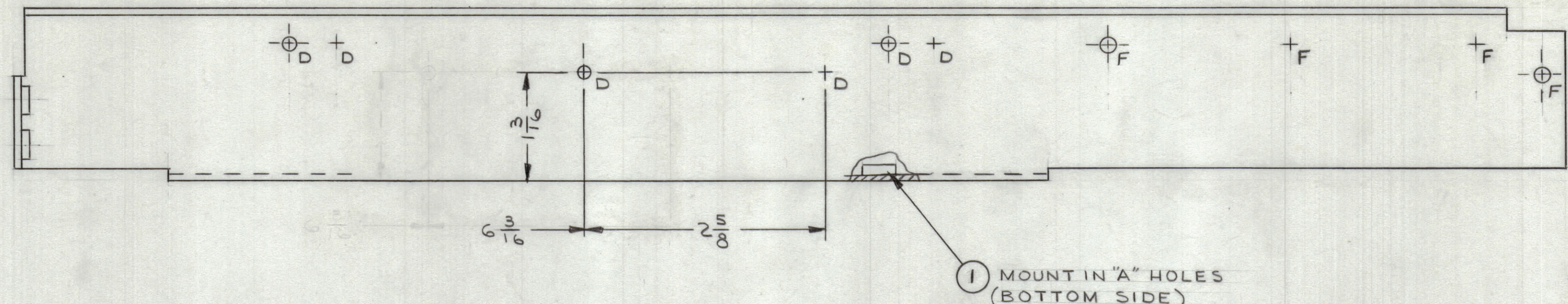
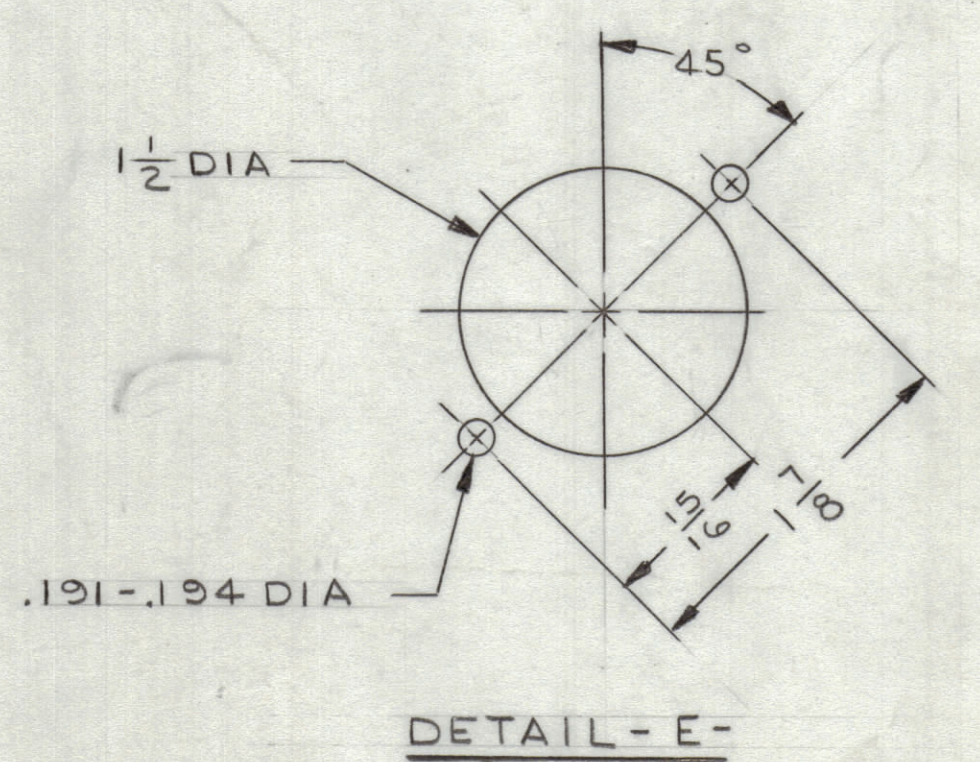
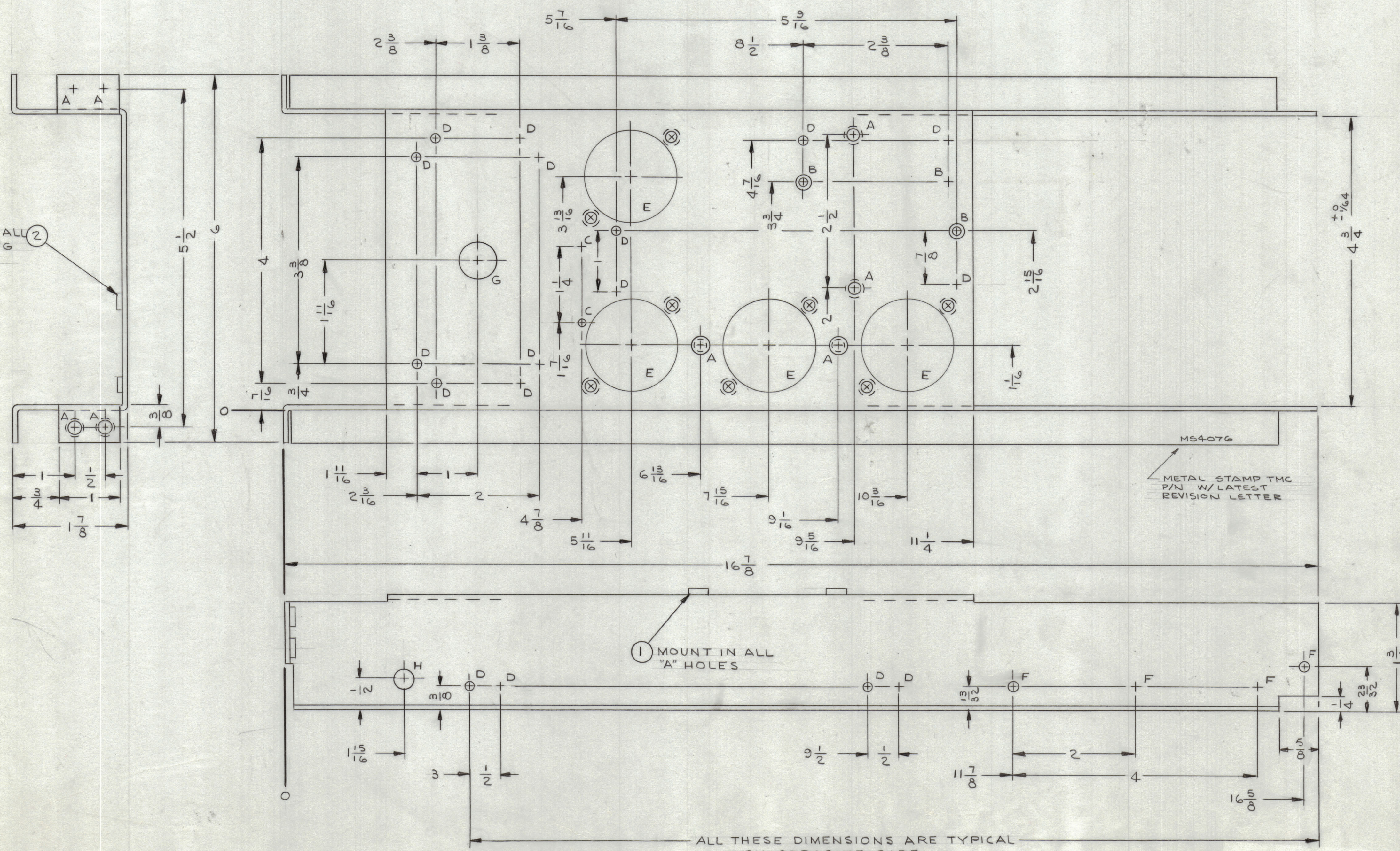


REVISIONS						
ZONE	SYM	DESCRIPTION	DATE	E.M.N. NO.	DRAFT	CHKD
X2		REDRAWN & REVISED	7/29/65		JL	JM
		ORIGINAL RELEASE FOR PRODUCTION	2-10-65			



HOLE LEGEND		
HOLE	DESCRIPTION	REQ'D
A	.221-.224 DIA	8
B	.144 DIA & C'SINK 82° X .284 DIA	3
C	9/64 DIA	2
D	11/64 DIA	24
E	SEE DETAIL	4
F	3/16 DIA	8
G	5/8 DIA	1
H	11/32 DIA	1

2 MOUNT IN ALL DET. "E" MTG HOLES.



ALL THESE DIMENSIONS ARE TYPICAL ON OPPOSITE SIDE

- UNLESS OTHERWISE SPECIFIED:
1. USE MATERIAL THICKNESS FOR MAXIMUM RADIUS ON ALL BENDS
 2. ALL ANGULAR BENDS 90 DEGREES
 3. REMOVE ALL BURRS AND SHARP EDGES
 4. MOUNT INSERTS AFTER FINISHING

NOTES

1	RTIA-1	A4063
QTY./UNIT	MODEL USED ON	ASSY. NO.
SCALE	CODE	
1:1	A	

REF: LD1693

8	2	NT 129-632-4	NUT, ROUND, SWAGE TYPE	DET. "E"
8	1	NT 129-832-4	" " " " " "	" "

REQ'D.	ITEM	PART NUMBER	DESCRIPTION	SYMBOL
F. EATON LIST OF MATERIAL				
MATERIAL .081 THK ALUMINUM 5052-H32				
FINISH YELLOW IRIDITE PER S404				
UNLESS OTHERWISE SPECIFIED DIMENSIONS ARE IN INCHES AND INCLUDE CHEMICALLY APPLIED OR PLATED FINISHES				
TOLERANCES DECIMALS ±.005 ±.01 ±.005 FRACTIONS ± 1/64 ANGLES ± 6° 30'				

THE TECHNICAL MATERIEL CORP. MAMARONECK, NEW YORK			
TITLE CHASSIS, ELECTRICAL, MAIN (± 12 V POWER SUPPLY)			
DRAWN	DATE	FINAL APPROVAL	DATE
J. LESHINSKI	12/29/64		
CHKD JM	DATE 1/16/65		
W. JORDAN	DATE 2/18/65		

MS4076

MS4076