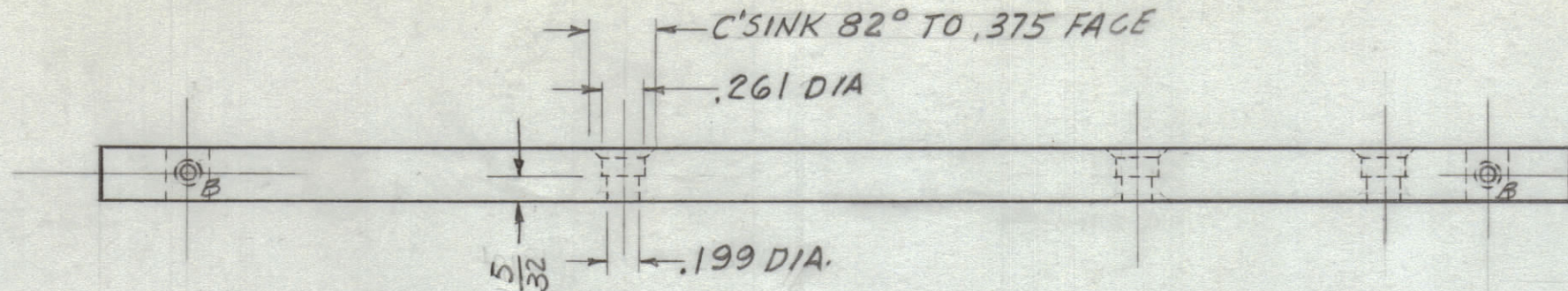


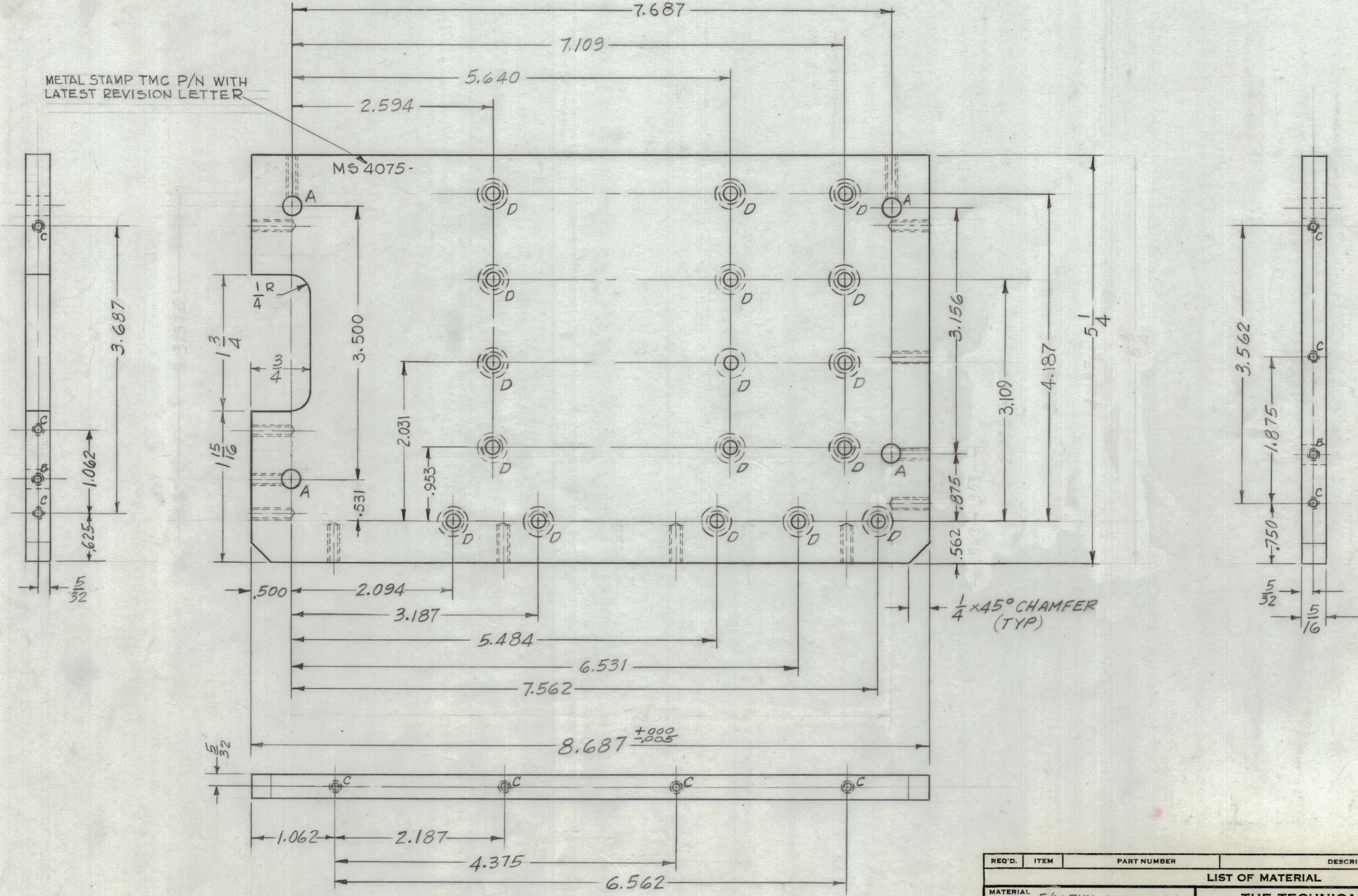
HOLE	DESCRIPTION	REQ.
A	.252 ± .001	4
B	DR. & TAP 6-32	4
C	DR. & TAP 6-32 X 1/2 DEEP	10
D	.199 DIA. THRU .261 C'BORE X 5/32 DEEP C'SINK 82° TO .375 FACE (SEE DETAIL)	17

REVISIONS						
ZONE	SYM	DESCRIPTION	DATE	E.M.N. NO.	DRAFT	CHKD
	X	EXP. RELEASE	11-9-64		G.D.L	
	Ø	ORIGINAL RELEASE FOR PRODUCTION	4-9-65		Ø	ZR



A - .252 ± .001 DIA HOLE (4 REQ)  
 B - DR. & TAP 6-32 (4 REQ)  
 C - DR. & TAP 6-32 1/2 DEEP (10 REQ)  
 D - .199 DIA DR THRU - .261 C BORE 5/32 DEEP  
 E - SINK 82° TO .375 FACE (17 REQ)  
 SEE DETAIL

METAL STAMP TMC P/N WITH LATEST REVISION LETTER



NOTE:  
 1) FLATNESS OF PLATE TO BE HELD WITHIN .003 PER FOOT.  
 2) REMOVE ALL BURRS AND SHARP EDGES.

NOTES

1	VLRB-1	
Q'TY./UNIT	MODEL USED ON	ASS'Y. NO.
SCALE 1:1	CODE Δ	

THE CONTENTS OF THIS DRAWING ARE THE EXCLUSIVE PROPERTY OF THE TECHNICAL MATERIEL CORP. ITS UNAUTHORIZED USE OR REPRODUCTION IN WHOLE OR IN PART IS STRICTLY FORBIDDEN.

REQ'D.	ITEM	PART NUMBER	DESCRIPTION	SYMBOL
LIST OF MATERIAL				
MATERIAL		5/16 THK ALUMINUM 2024-T3	THE TECHNICAL MATERIEL CORP. MAMARONECK, NEW YORK	
FINISH		S404 YEL. IRIDITE	TITLE PLATE, SUPPORT	
UNLESS OTHERWISE SPECIFIED DIMENSIONS ARE IN INCHES AND INCLUDE CHEMICALLY APPLIED OR PLATED FINISHES		DRAWN G.D.L	DATE 11-9-64	FINAL APPROVAL [Signature]
DECIMALS .X ± .05 .XX ± .01 .XXX ± .005		CHECKED [Signature]	DATE	DATE
FRACTIONS ± 1/64 ANGLES ± 0° 30'		ELECT. DES.	DATE	DATE
TOLERANCES		MECH. DES. [Signature]	DATE 4-8-65	DATE
			SHEET	REV. LTR.

MS-4075 Ø