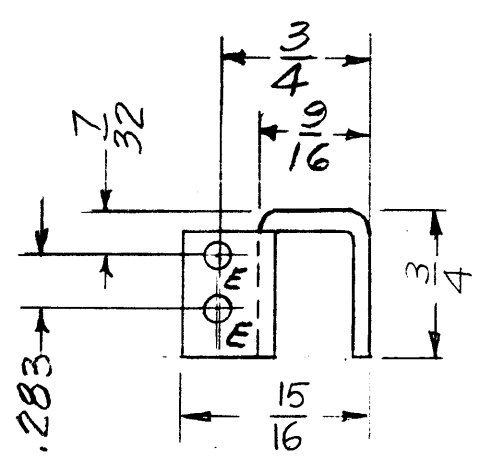
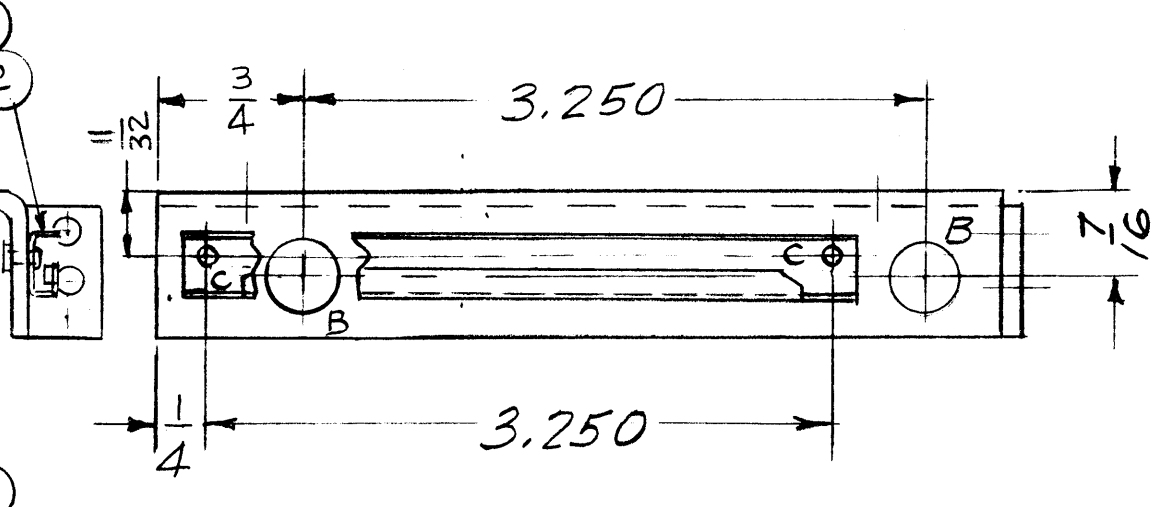
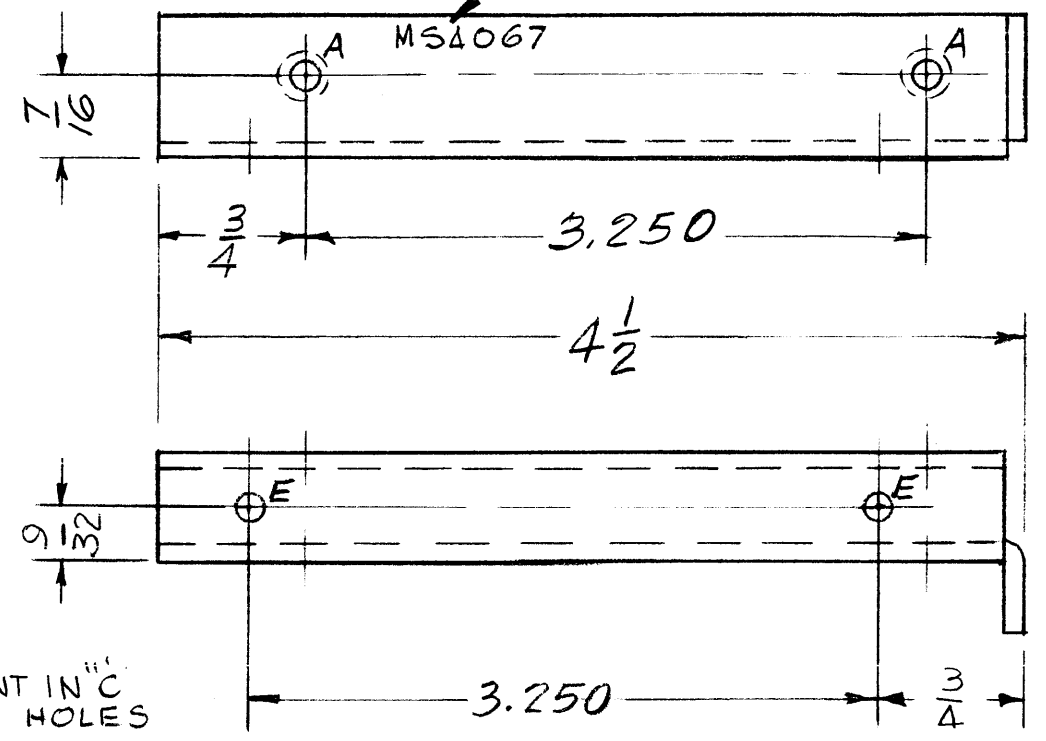


METAL STAMP TMC P/No 1/8 HIGH GOTHIC  
W/LATEST REVISION LETTER



MS4067

REVISIONS

SYM	DESCRIPTION	DATE	E.M.N. NO.	DRAFT	CHKD	APPD
X	EXPER. RELEASE					
X1	TWO F HOLES DELETED, TWO E HOLES ADDED	12-23-64		G.D.L.		
Ø	ORIGINAL RELEASE FOR PRODUCTION	4.9.65	Ø	Ø		

REQ	DESCRIPTION	REQ
A	.161-.164 DIA	2
B	3/8 DIA	2
C	.098 DIA	2
E	9/64 DIA	4

MOUNT IN "C" HOLES

MOUNT IN "A" HOLES

UNLESS OTHERWISE SPECIFIED:

1. USE MATERIAL THICKNESS FOR MAXIMUM RADIUS ON ALL BENDS
2. ALL ANGULAR BENDS 90 DEGREES
3. REMOVE ALL BURRS AND SHARP EDGES
4. MOUNT INSERTS AFTER FINISHING

CUT HERE  
QUANTIFIED  
7-64

NOTES

1	VLRB-1	
Q'TY./UNIT	MODEL USED ON	ASS'Y. NO.
SCALE 1:1	CODE A	

THE CONTENTS OF THIS DRAWING ARE THE EXCLUSIVE PROPERTY OF THE TECHNICAL MATERIEL CORP. ITS UNAUTHORIZED USE OR REPRODUCTION IN WHOLE OR IN PART IS STRICTLY FORBIDDEN.

REQ'D.	ITEM	PART NUMBER	DESCRIPTION	SYMBOL
1	3	CU157-1	RETAINER, P.C. BOARD	C
2	2	EY101-3	EYELET, MTL	C
2	1	NT129-440-5	NUT, PLAIN, SPLINE	A

0. POSE LIST OF MATERIAL

MATERIAL .093 ALUMINUM 5052-H32	THE TECHNICAL MATERIEL CORP. MAMARONECK, NEW YORK			
FINISH S404 YEL. IRIDIOTE	TITLE BRACKET, MTG. RETAINER BOARD RIGHT, OSC.			
UNLESS OTHERWISE SPECIFIED DIMENSIONS ARE IN INCHES AND INCLUDE CHEMICALLY APPLIED OR PLATED FINISHES	DRAWN G.D.L.	DATE 12-23-64	FINAL APPROVAL <i>[Signature]</i>	
	CHECKED <i>[Signature]</i>	DATE	DATE	
DECIMALS .X ± .05 .XX ± .01 .XXX ± .005	TOLERANCES	FRACTIONS ± 1/64 ANGLES ± 0° 30'	ELECT. DES. DATE	MECH. DES. DATE
			MS4067	Ø
			18-65	REV. LTR.