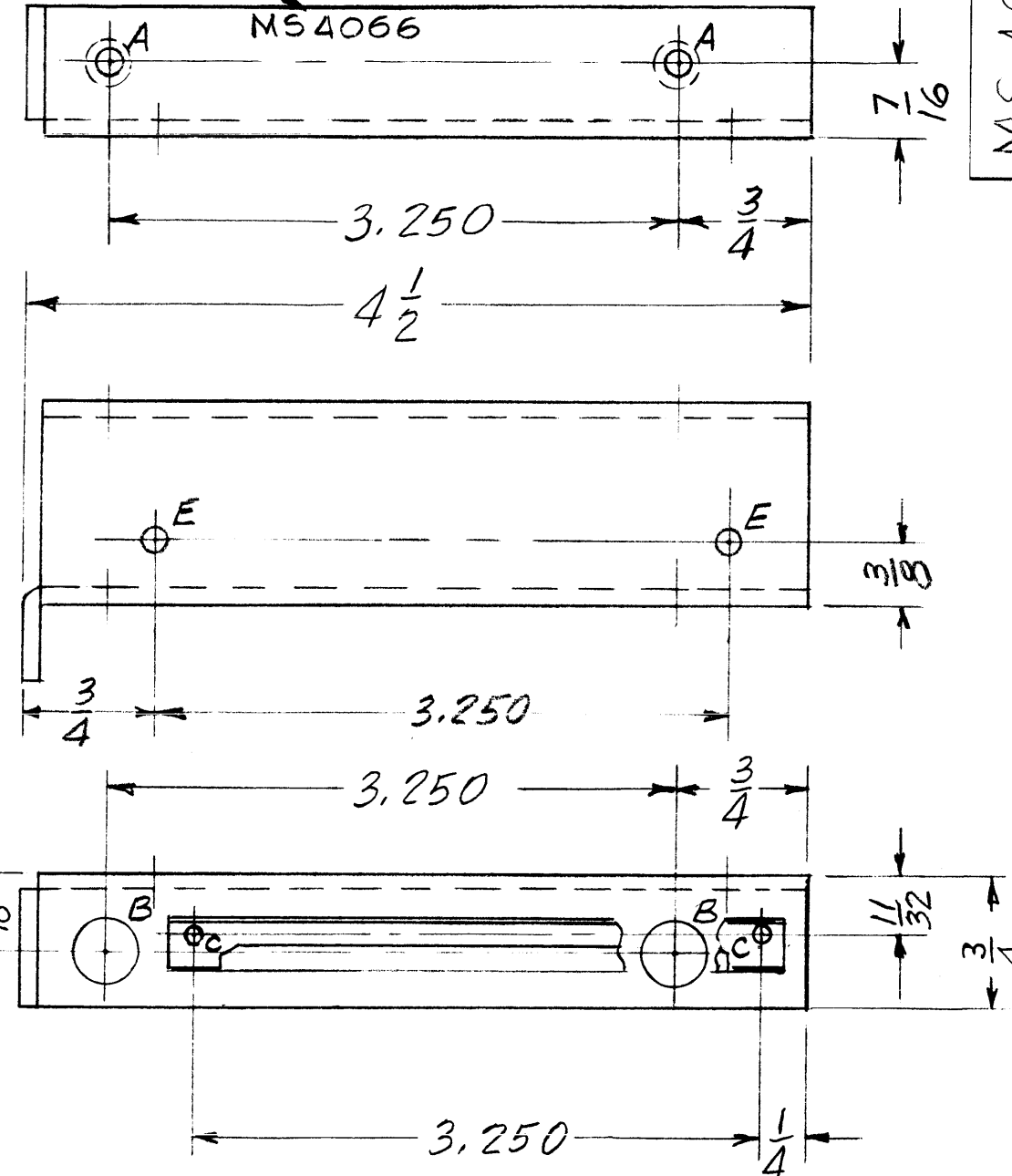


METAL STAMP TMC P/No 1/8 HIGH GOTHIC WITH LATEST REVISION LETTER

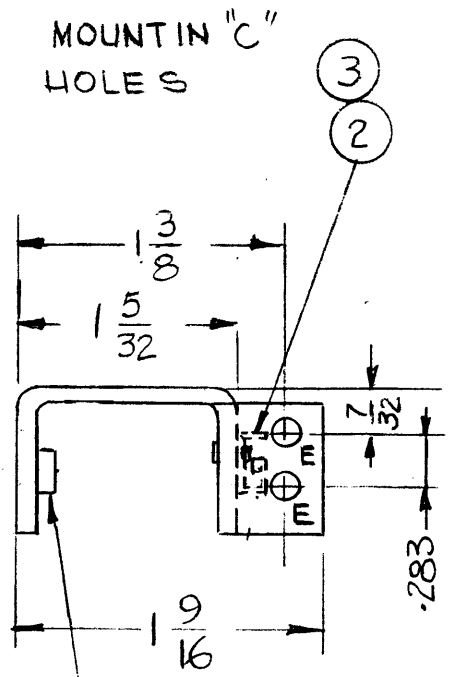
MS 4066

REVISIONS

SYM	DESCRIPTION	DATE	E.M.N. NO.	DRAFT	CHKD	APPD
X	EXPER. RELEASE	12-10-64		G.D.L		
XI	TWO F HOLES DELETED, TWO E HOLES ADDED	12-23-64		G.D.L		
Ø	ORIGINAL RELEASE FOR PRODUCTION	4-9-65	Ø	Ø		



HOLE	DESCRIPTION	REQ
A	.161 - .164 DIA	2
B	3/8 DIA	2
C	.093 DIA	2
E	9/64 DIA	4



- UNLESS OTHERWISE SPECIFIED:
1. USE MATERIAL THICKNESS FOR MAXIMUM RADIUS ON ALL BENDS.
 2. ALL ANGULAR BENDS 90 DEGREES
 3. REMOVE ALL BURRS AND SHARP EDGES
 4. MOUNT INSERTS AFTER FINISHING

NOTES

1	VLRB-1	
Q'TY./UNIT	MODEL USED ON	ASS'Y. NO.
SCALE 1:1	CODE Δ	

THE CONTENTS OF THIS DRAWING ARE THE EXCLUSIVE PROPERTY OF THE TECHNICAL MATERIEL CORP. ITS UNAUTHORIZED USE OR REPRODUCTION IN WHOLE OR IN PART IS STRICTLY FORBIDDEN.

REQ'D.	ITEM	PART NUMBER	DESCRIPTION	SYMBOL
1	3	CUI57-1	RETAINER P.C. BOARD	C
2	2	EY101-3	EYELET, MTL	C
2	1	NT129-440-5	NUT, PLAIN, SPLINE	A

LIST OF MATERIAL

MATERIAL: .093 ALUMINUM 5052-H32

FINISH: S404 YEL IRIDITE

TITLE: BRACKET, MTG RETAINER BOARD LEFT, OSC

UNLESS OTHERWISE SPECIFIED DIMENSIONS ARE IN INCHES AND INCLUDE CHEMICALLY APPLIED OR PLATED FINISHES

THE TECHNICAL MATERIEL CORP. MAMARONECK, NEW YORK

DRAWN: G.D.L. DATE: 12-10-64

CHECKED: [Signature] DATE: [Blank]

ELECT. DES. DATE: [Blank]

MECH. DES. DATE: 4-5-65

FINAL APPROVAL: [Signature] DATE: [Blank]

MS4066

DECIMALS: .X ± .05, .XX ± .01, .XXX ± .005

FRACTIONS: ± 1/64, ± 0° 30'

TOLERANCES

SHEET

REV. LTR.