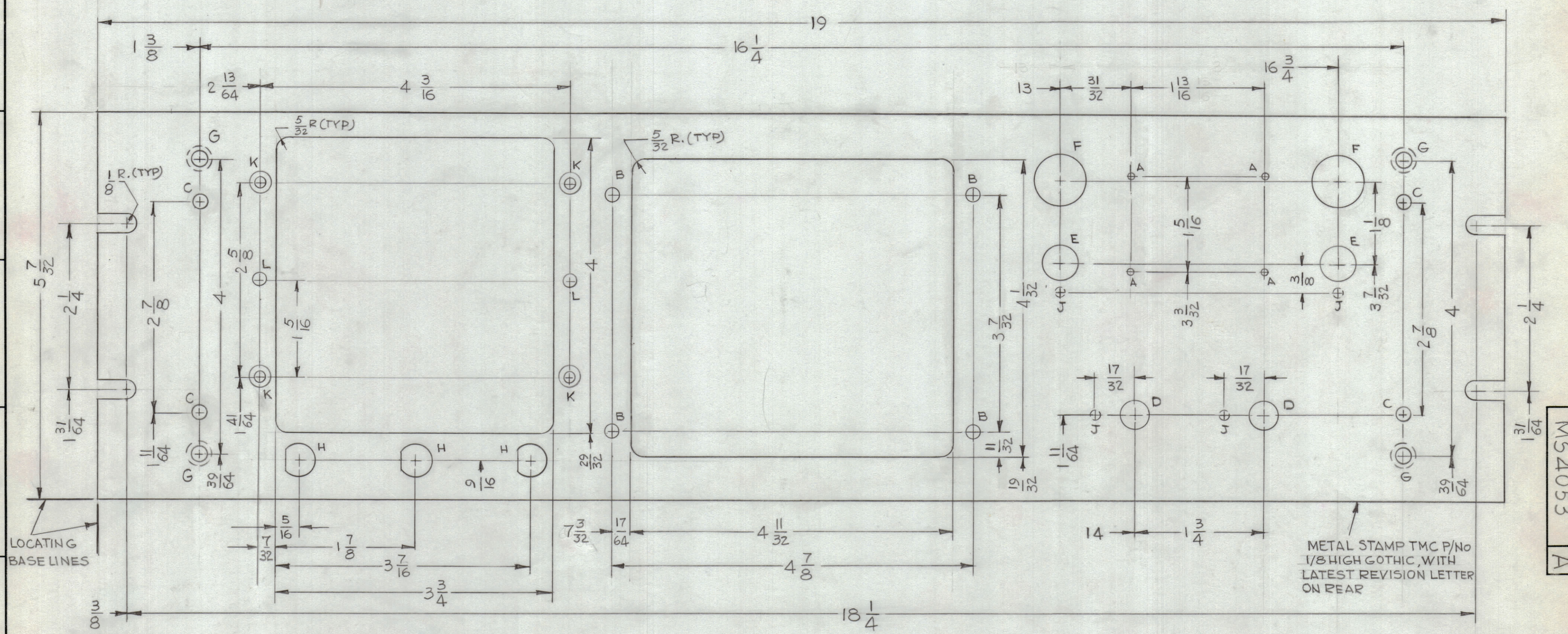
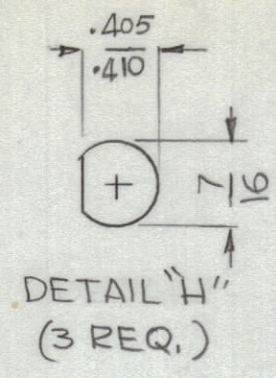


ZONE	SYM	DESCRIPTION	DATE	E.M.N. NO.	DRAFT	CHKD	APPD
X		EXP. RELEASE	9-24-64				
X1		ON PICT. "J" HOLES ADDED	9-25-64				
X2		COMPLETELY REVISED & REDRAWN	9-29-64				
Ø		ORIGINAL RELEASE FOR PRODUCTION	10-8-64				
A		"E"-HOLE WAS 15/32 DIA	10-22-64	12739			



HOLE	DESCRIPTION	REQ
A	.076 DIA.	4
B	11/64 DIA.	4
C	3/16 DIA.	4
D	3/8 DIA.	2
E	31/64 DIA.	2
F	11/16 DIA.	2
G	.196 DIA. C'SINK 82° TO .390 DIA. ON REAR	4
H	SEE DETAIL	3
J	1/8 DIA X 1/8 DEEP ON REAR	4
K	.144 DIA. C'SINK 82° TO .284 DIA	4
L	DRILL & TAP FOR 6-32	2

**MACHINING:**

- MILL ALL EDGES.
- HOLES MUST BE DRILLED, UNLESS OTHERWISE SPECIFIED.
- LATERAL BOW OF PANEL MUST BE KEPT TO .031 TOLERANCE.
- PANEL MUST BE FREE OF ALL MACHINING MARKS, GOUGES AND SCRATCHES. IF NECESSARY, SAND FRONT OF PANEL WITH NO. 120 GRIT SANDPAPER.

**FINISH NOTES:**

- S404 - IRIDITE 14-2 AL-COAT.
- S114 - ZINC CHROMATE PRIMER) FRONT AND
- S115 - SMOOTH GRAY ENAMEL ) EDGES ONLY

REF: LD1614 (2 SHEETS)

1	PFCB-1	
QTY/UNIT	MODEL USED ON	ASSY. NO.
SCALE	CODE	
1:1	A	

THE CONTENTS OF THIS DRAWING ARE THE EXCLUSIVE PROPERTY OF THE TECHNICAL MATERIEL CORP. ITS UNAUTHORIZED USE OR REPRODUCTION IN WHOLE OR IN PART IS STRICTLY FORBIDDEN.

REQ'D.	ITEM	PART NUMBER	DESCRIPTION	SYMBOL
M. GELLMAN LIST OF MATERIAL				
MATERIAL		3/16 THK. ALUMINUM 2024-T3	THE TECHNICAL MATERIEL CORP. MAMARONECK, NEW YORK	
FINISH		SEE NOTES	TITLE PANEL, FRONT	
UNLESS OTHERWISE SPECIFIED DIMENSIONS ARE IN INCHES AND INCLUDE CHEMICALLY APPLIED OR PLATED FINISHES			DRAWN G.D.L	DATE 9-29-64
DECIMALS X ± .05 XX ± .01 XXX ± .005			CHECKED	DATE 10-8-64
FRACTIONS TOLERANCES ± 1/64 ANGLES ± 0° 30'			ELECT. DES.	DATE
			MECH. DES.	DATE
SHEET MS4053				REV. LTR. A

NOTES