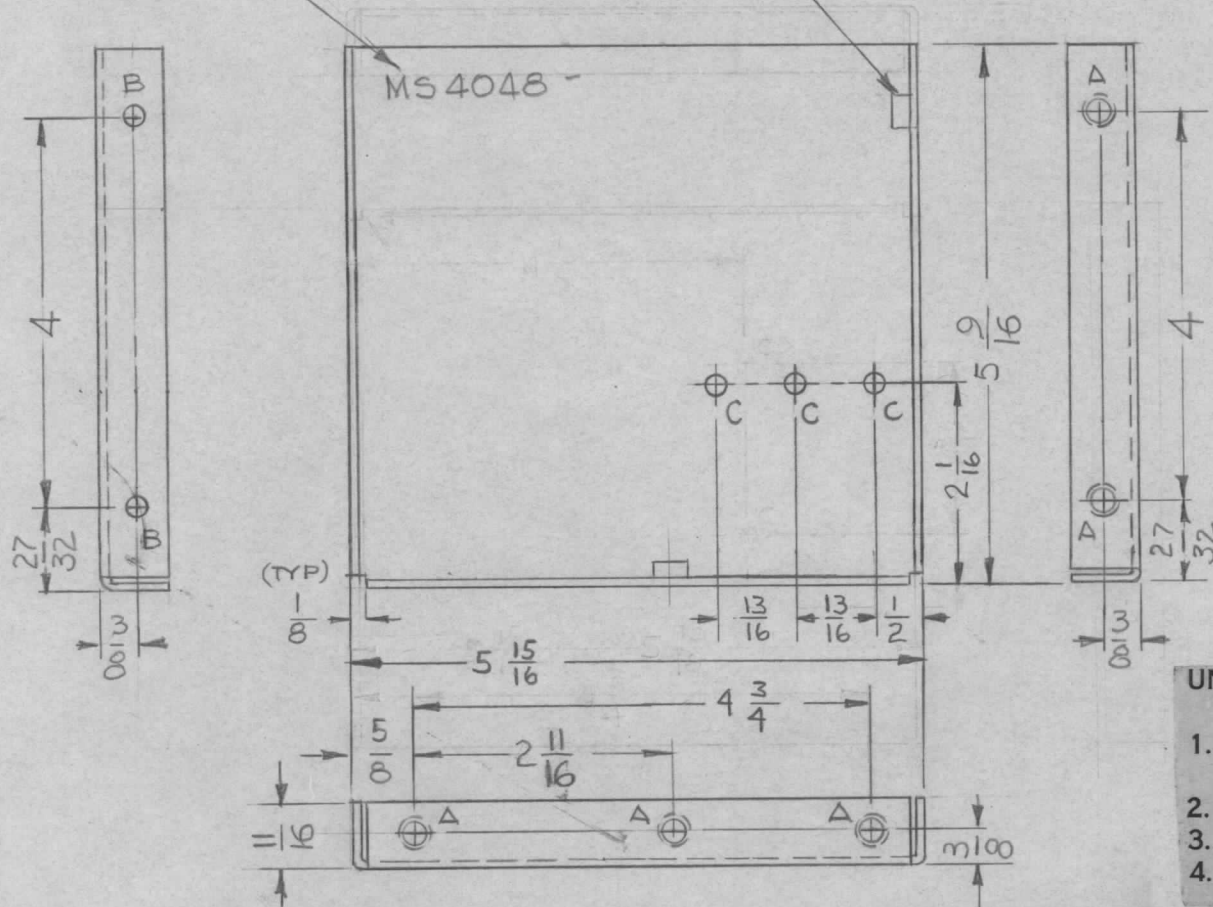


METAL STAMP TMC P/N.
1/8 HIGH GOTHIC W/LATEST
REV. LETTER

MOUNT IN ALL
"A" HOLES

REQ. PER UNIT	USED ON			MS4048 A
	MODEL	ASS'Y. NO.	DATE	
1	RTMU-1	A3909	10-21-64	

HOLE	DESCRIPTION	REQ.
A	.221 - .224 DIA.	5
B	3/16 DIA.	2
C	1/64 DIA.	3



REF. LD 1802

UNLESS OTHERWISE SPECIFIED:

1. USE MATERIAL THICKNESS FOR MAXIMUM RADIUS ON ALL BENDS
2. ALL ANGULAR BENDS 90 DEGREES
3. REMOVE ALL BURRS AND SHARP EDGES
4. MOUNT INSERTS AFTER FINISHING

A		2 "C" HOLES RELOC. & 1 "C" HOLE ADD. W/LOC. DIM; REF. ADD.	3.4.65	13636	92	JOB	5	1	NT129-832-4	NUT, PLAIN, SPLINE	A	
X		ORIGINAL RELEASE FOR PRODUCTION	1/18/65			JM	EATON DESCRIPTION SYMBOL					
X ₁		ADDED "C" HOLES	10/22/64			JL JM W.J.	.081 THK STOCK SIZE					
X		EXP. RELEASE	10-21-64			G.D.L.	ALUMINUM MATERIAL					
SYM		DESCRIPTION	DATE	CH. NO.	DRAFTS	CHECKER	ENG. APP.	THE TECHNICAL MATERIEL CORP. MAMARONECK, NEW YORK				
		UNLESS OTHERWISE SPECIFIED DIMENSIONS ARE IN INCHES AND INCLUDE CHEMICALLY APPLIED OR PLATED FINISHES	SCALE	1:2			BRACKET, MTG. SUPPORT (P.C. CARD BIN)					
DECIMALS		FRACTIONS	CODE	5052-H32								
.X ± .05		± 1/64	A	TYPE & TEMPER		HEAT TREAT. SPEC.	DRAWN	CHECKED	FINAL APPROVAL			
.XX ± .01		ANGLES		S404 YEL IRIDITE			G.D.L. 10-21-64	JM @	MS4048 A			
.XXX ± .005		± 0° 30'		FINISH & SPEC. NO.		ELEC. DES. APP.	MECH. DES. APP.					