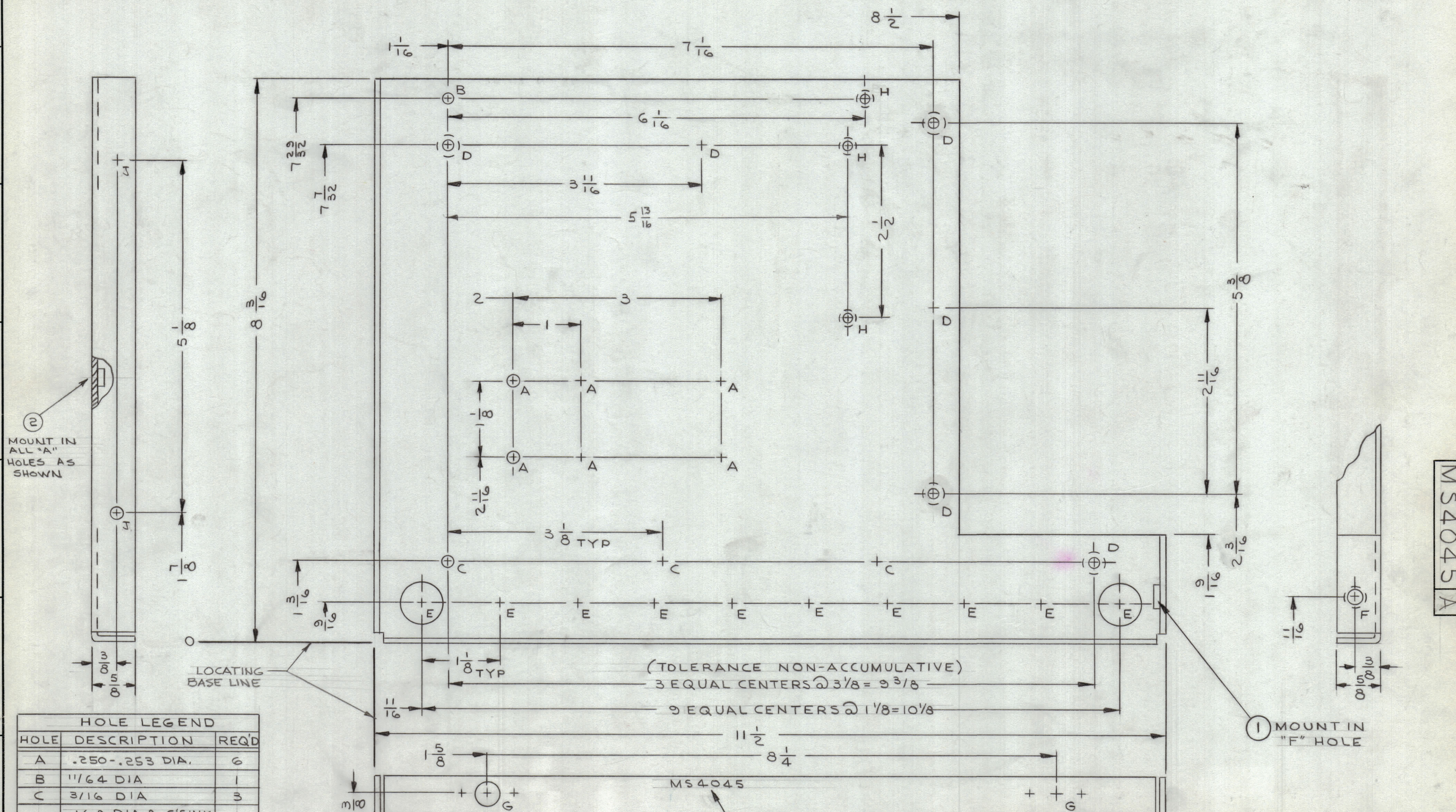
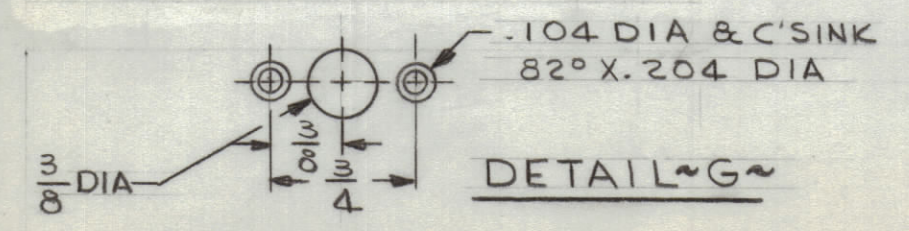


REVISIONS							
ZONE	SYM	DESCRIPTION	DATE	E.M.N. NO.	DRAFT	CHKD	APPD
	X3	REDRAWN & REVISED	12/3/64	X3	JL		
	X4	(2) "J" HOLES WERE "A" HOLES; ITEM (2) ADDED	1-19-65	X4	JL	J.M.	W.J.
	Ø	ORIGINAL RELEASE FOR PRODUCTION	1-20-65	Ø	JL	J.M.	
F4	A	DIM. 5-13/16 ADDED.	4-13-65	13879	JL	J.L.	J.P.



HOLE	DESCRIPTION	REQ'D
A	.250-.253 DIA.	6
B	11/64 DIA	1
C	3/16 DIA	3
D	.169 DIA & C'SINK 82° X .337 DIA	6
E	5/8 DIA	10
F	.221-.224 DIA	1
G	SEE DETAIL	2
H	.144 DIA, C'SINK 82° TO .284 DIA	3
J	13/64 DIA	2



- UNLESS OTHERWISE SPECIFIED:
1. USE MATERIAL THICKNESS FOR MAXIMUM RADIUS ON ALL BENDS
 2. ALL ANGULAR BENDS 90 DEGREES
 3. REMOVE ALL BURRS AND SHARP EDGES
 4. MOUNT INSERTS AFTER FINISHING

Q'TY./UNIT	MODEL USED ON	ASS'Y. NO.
SCALE 1:1	A	A3909

THE CONTENTS OF THIS DRAWING ARE THE EXCLUSIVE PROPERTY OF THE TECHNICAL MATERIEL CORP. ITS UNAUTHORIZED USE OR REPRODUCTION IN WHOLE OR IN PART IS STRICTLY FORBIDDEN.

REQ'D.	ITEM	PART NUMBER	DESCRIPTION	SYMBOL
6	2	NT129-1032-4	NUT, PLAIN, SPLINE	A
1	1	NT 129-832-4	NUT, PLAIN, SPLINE	F

F.E. EATON LIST OF MATERIAL

MATERIAL	TITLE
.081 THK ALUMINUM 5052-H32	PLATE, SIDE-LEFT

FINISH	THE TECHNICAL MATERIEL CORP.
YELLOW IRIDITE PER S404	MAMARONECK, NEW YORK

DRAWN	DATE	FINAL APPROVAL	DATE
J. LESHINSKI	12/3/64	JL	
CHECKED @	1-18-65		
ELECT. DES. W. JORDAN	DATE 1/18/65		
MECH. DES. W. JORDAN	DATE 1/18/65		

MS4045 A

SHEET

REV. LTR.

MS4045 A