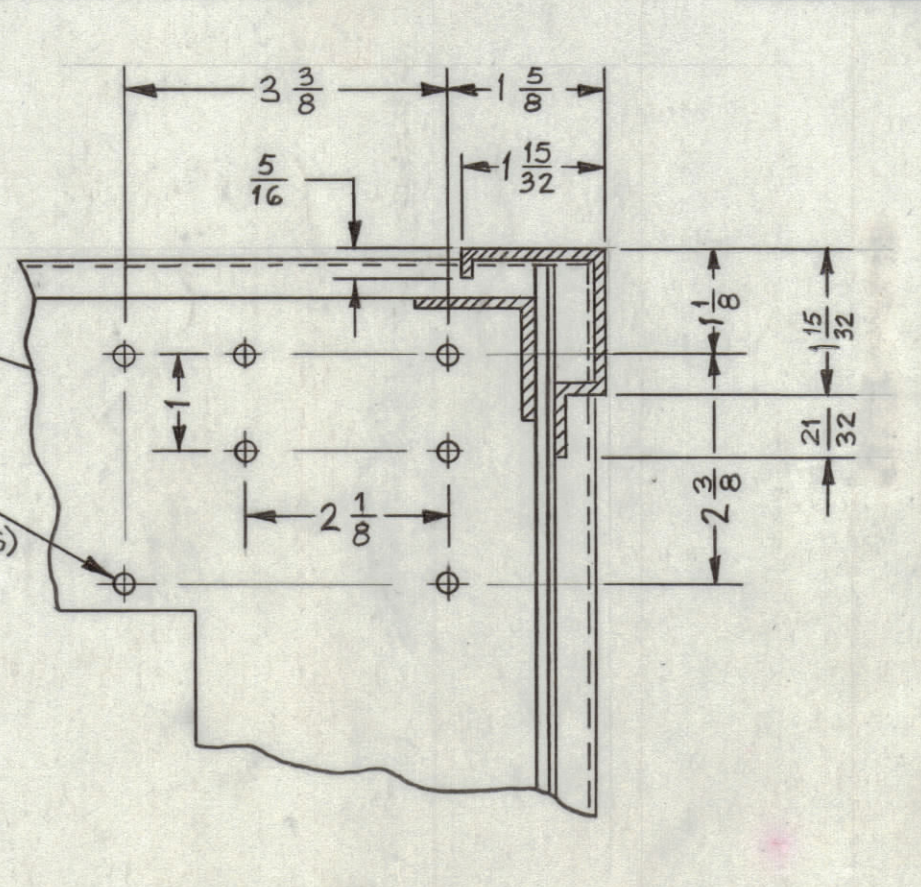
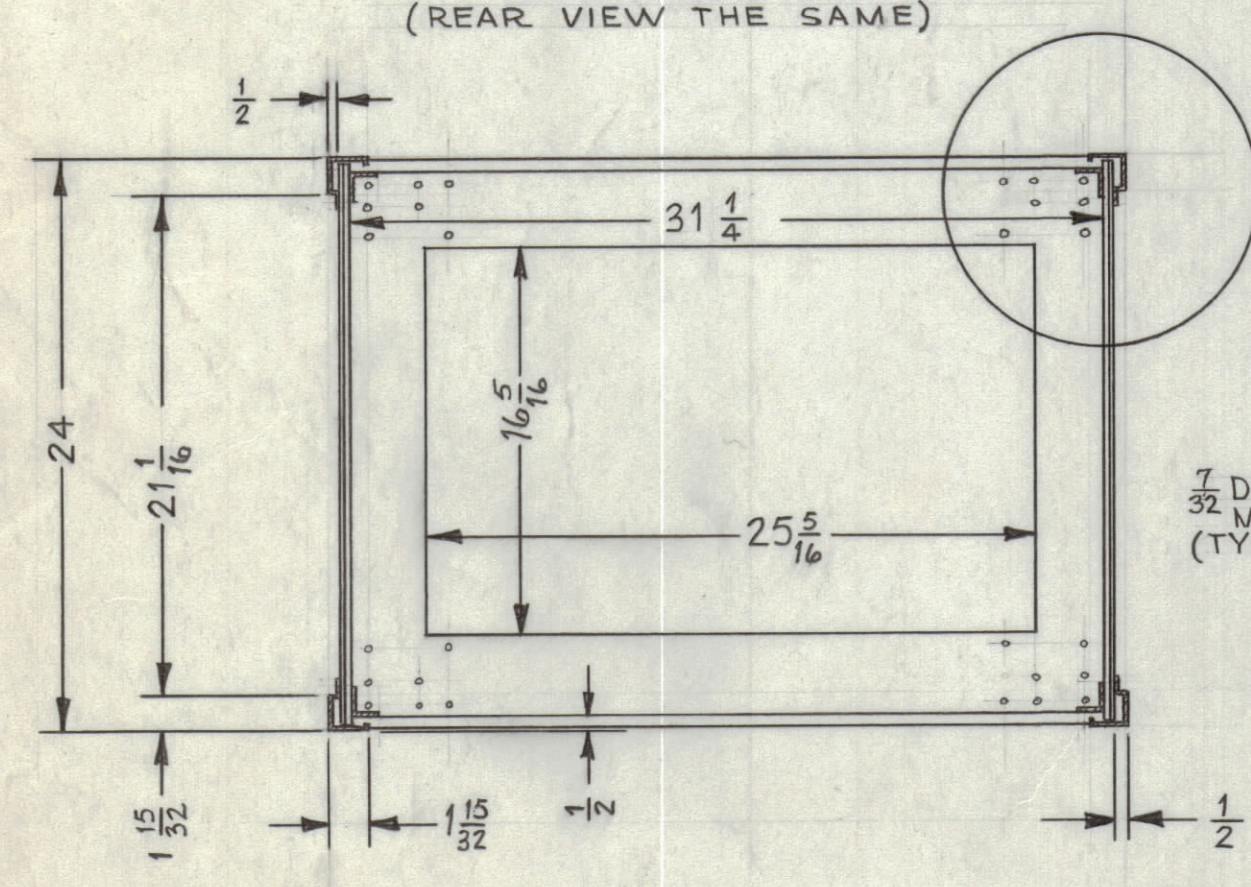
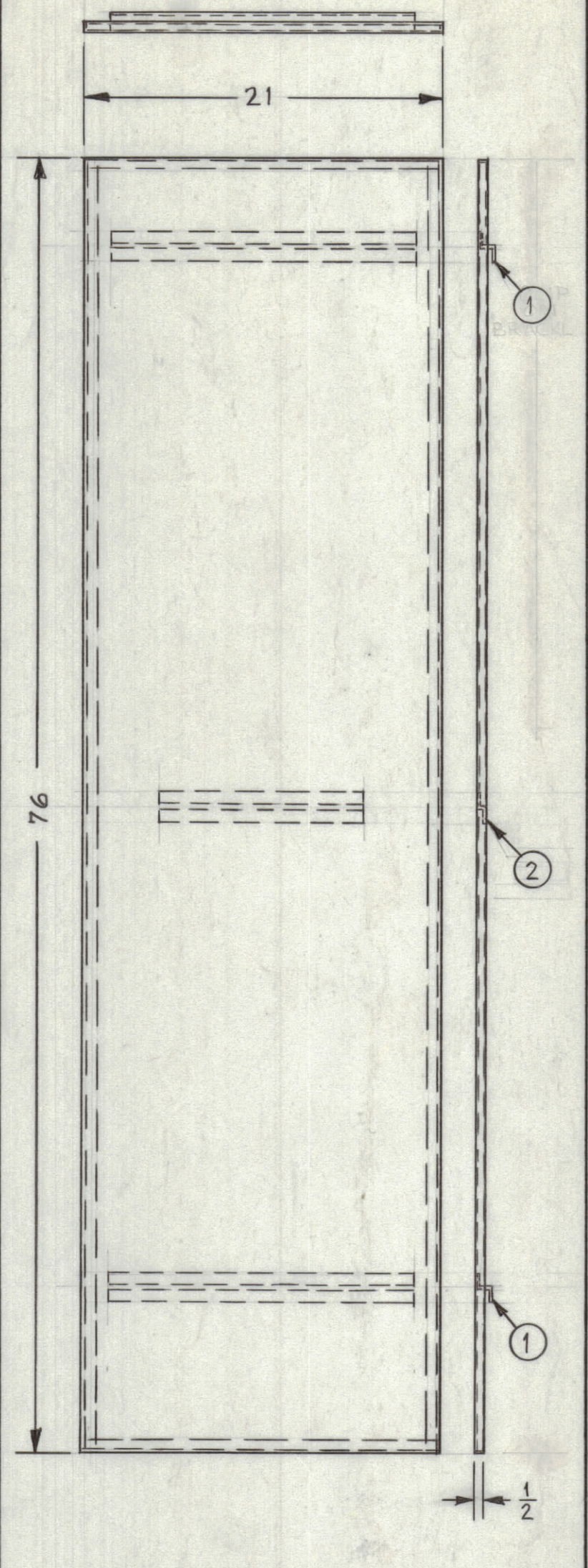
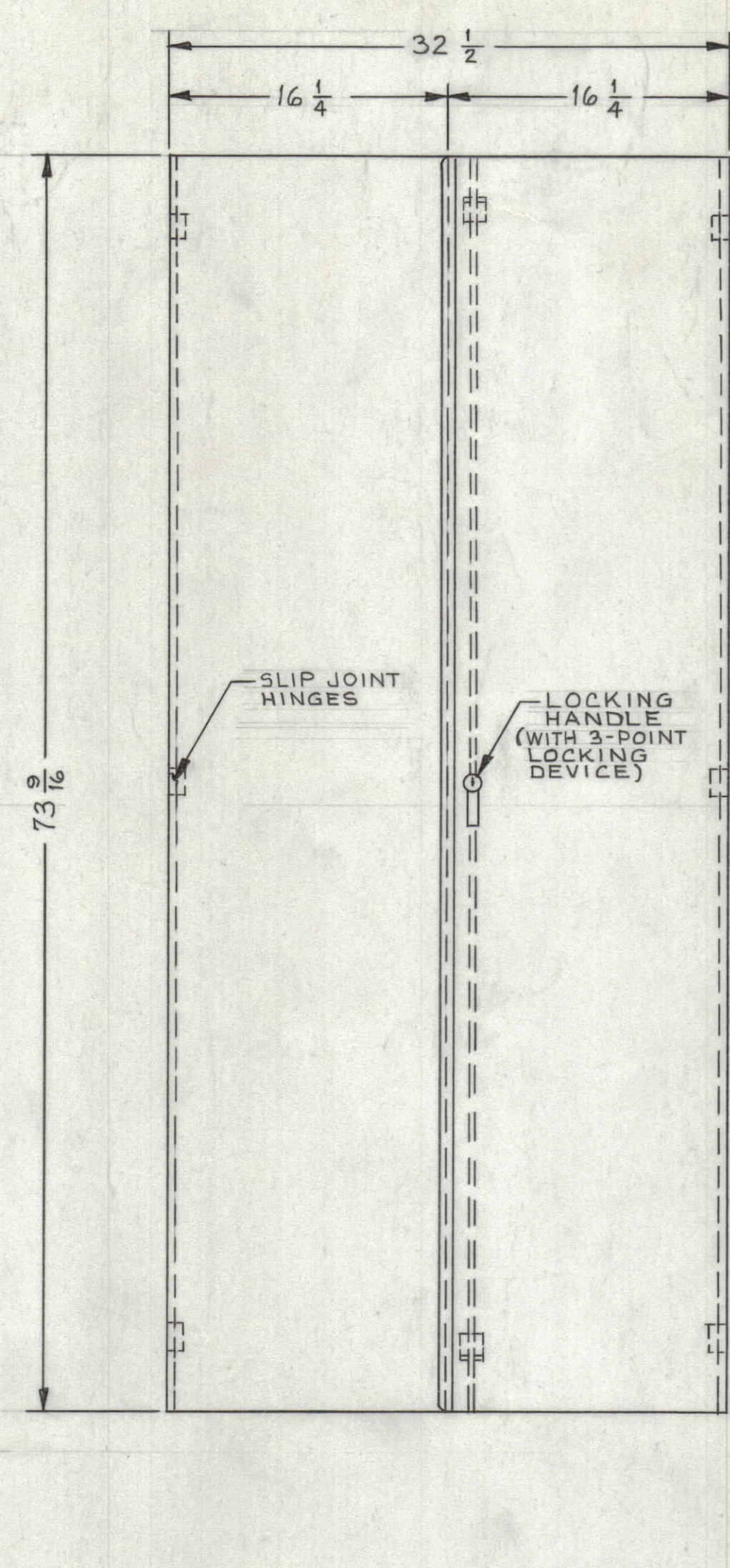
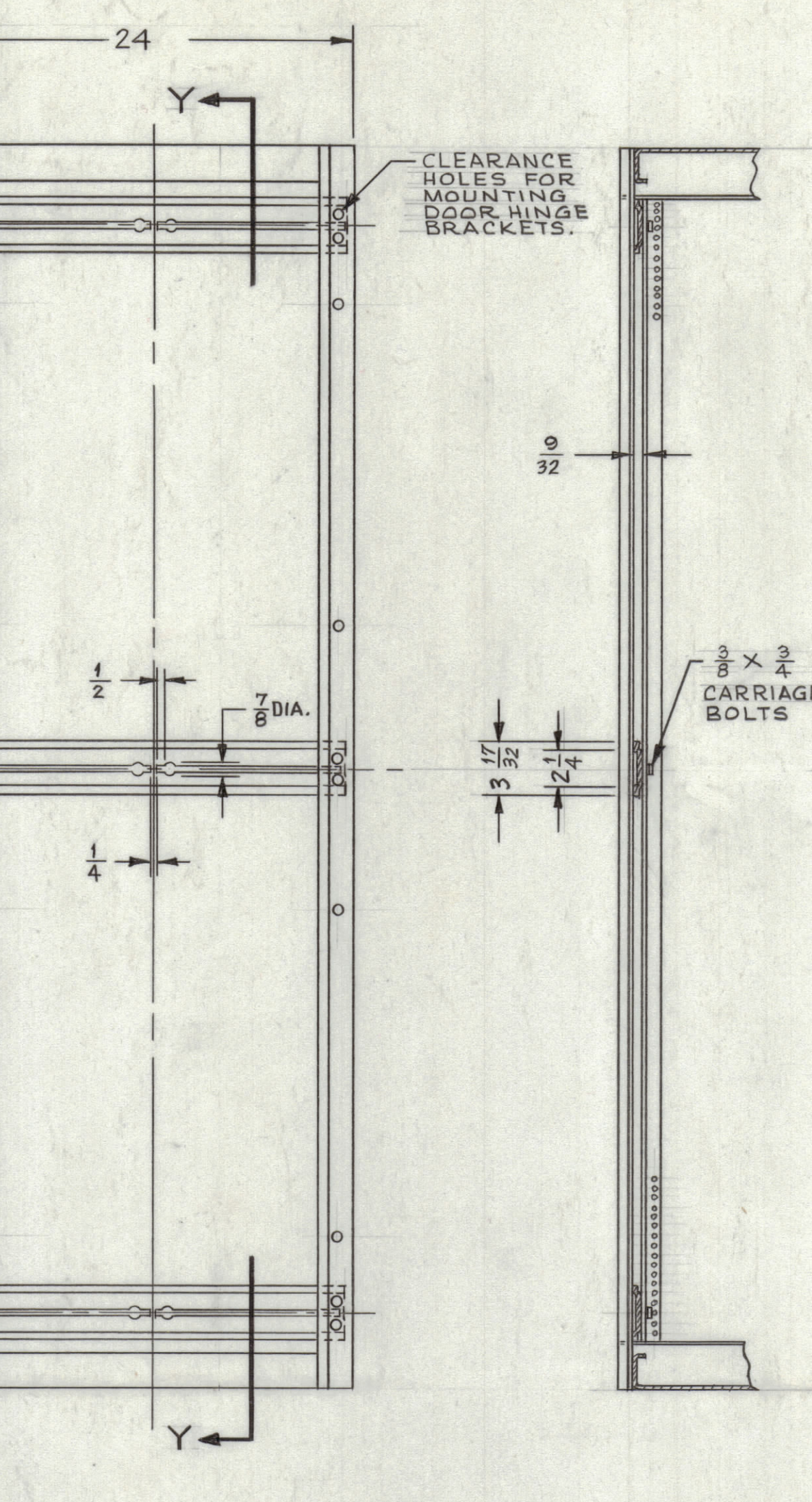
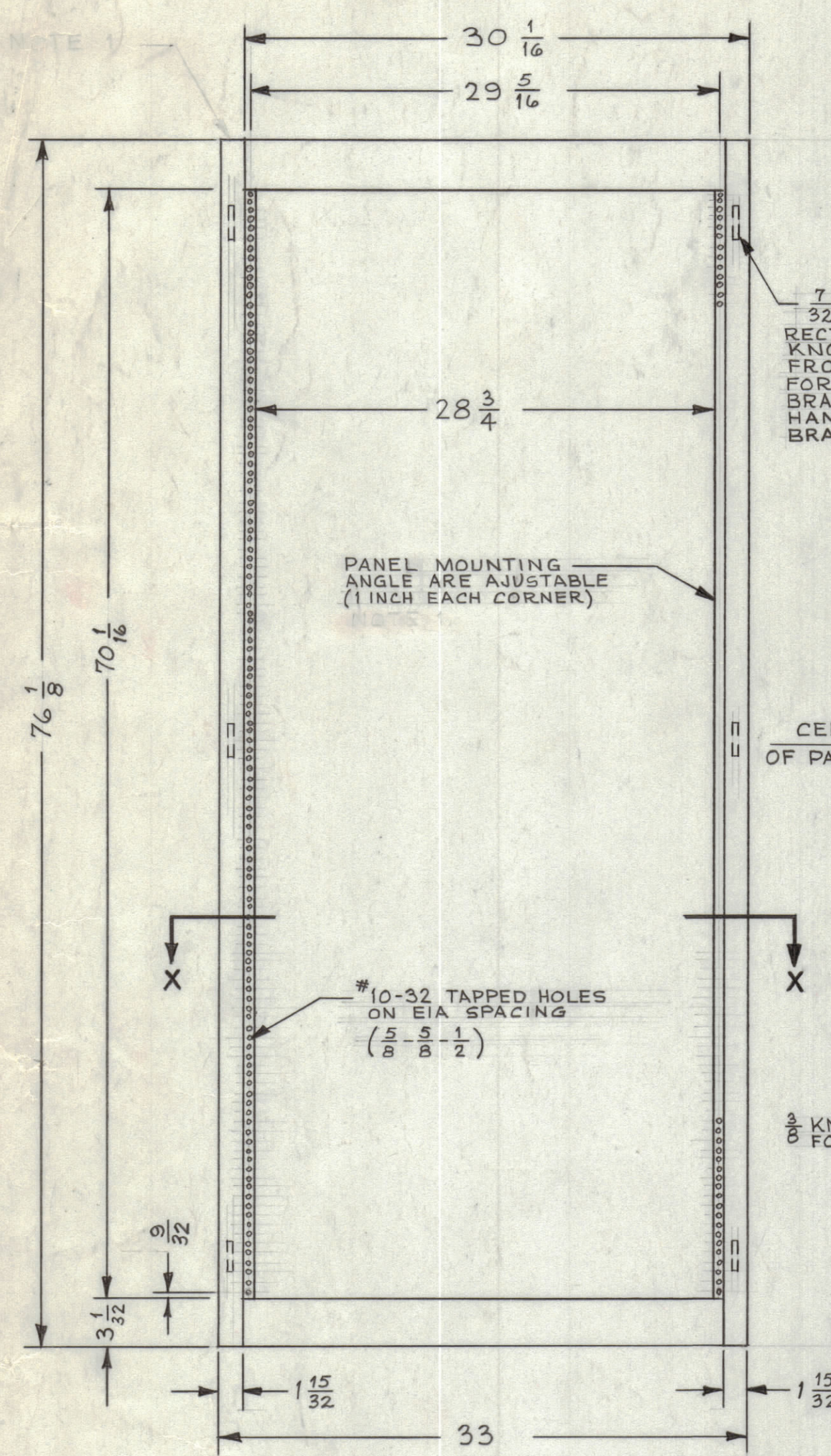


REVISIONS							
ZONE	SYM	DESCRIPTION	DATE	E.M.N. NO.	DRAFT	CHKD	APPD
		ORIGINAL RELEASE FOR PRODUCTION	10-13-64			G.D.L.	



MATERIAL - #16 GAUGE COLD ROLLED STEEL.
FINISH - S-520 BLUE GRAY

MATERIAL - #16 GAUGE COLD ROLLED STEEL.
FINISH - S-520 BLUE GRAY

FR MS-4036-1
MATERIAL - FRAME MATERIAL, #14 GAUGE COLD ROLLED STEEL EXCEPT PANEL MOUNTING ANGLES ARE #12 GAUGE STEEL.
FINISH - S-520 BLUE GRAY

MS-4036-2

MS-4036-3

REQ'D.	ITEM	PART NUMBER	DESCRIPTION	SYMBOL
2	3	MS-4036-3	PANEL, SIDE	
1EA.	2	MS-4036-2	DOORS, REAR, LEFT & RIGHT	
1	1	MS-4036-1	FRAME	

MATERIAL		LIST OF MATERIAL	
SEE NOTES	SEE NOTES	THE TECHNICAL MATERIEL CORP. MAMARONECK, NEW YORK	
SEE NOTES	TITLE	CABINET	
SCALE	CODE	MODEL USED ON	ASSY. NO.
1/4" = 1"	C	5401-127	
UNLESS OTHERWISE SPECIFIED DIMENSIONS ARE IN INCHES AND INCLUDE CHEMICALLY APPLIED OR PLATED FINISHES		DECIMALS ±.05	FRACTIONS ±1/64
		XX ±.01	ANGLES ±0° 30'
		XXX ±.005	
THE CONTENTS OF THIS DRAWING ARE THE EXCLUSIVE PROPERTY OF THE TECHNICAL MATERIEL CORP. ITS UNAUTHORIZED USE OR REPRODUCTION IN WHOLE OR IN PART IS STRICTLY FORBIDDEN.		DATE	FINAL APPROVAL
		10-13-64	[Signature]
		DATE	DATE
		10-13-64	10-13-64
		MECH. DES.	DATE
		[Signature]	10-13-64
		SHEET	REV. LTR.
		MS 4036	0

NOTES

MS 4036