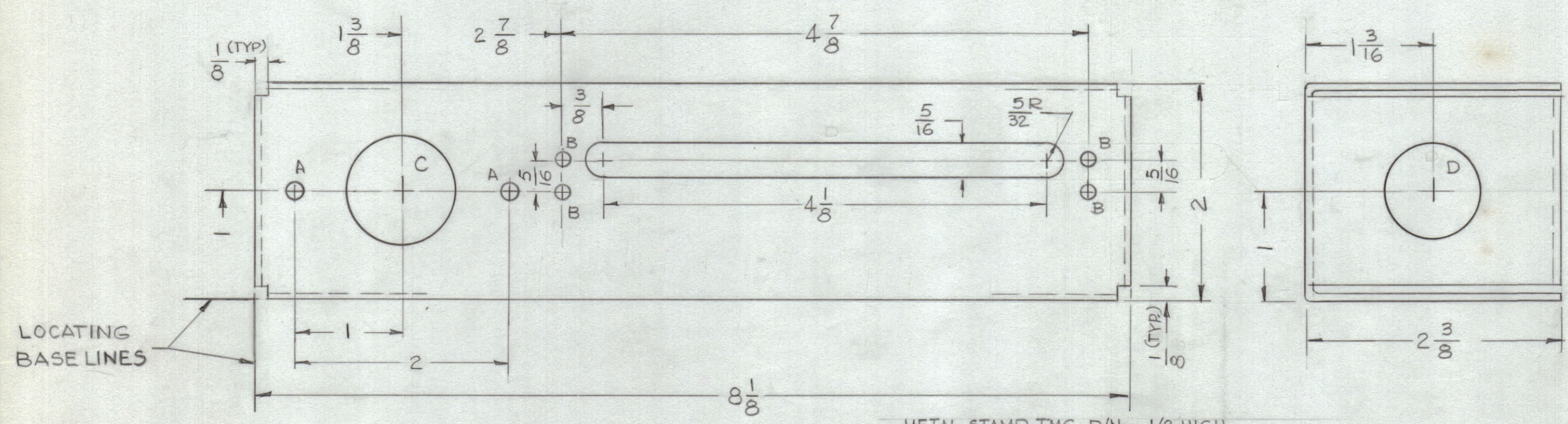


REVISIONS							
ZONE	SYM	DESCRIPTION	DATE	E.M.N. NO.	DRAFT	CHKD	APPD
	X	EXP. RELEASE	9-21-64		G.D.L.		
	Ø	ORIGINAL RELEASE FOR PRODUCTION	9-24-64		J.F.		

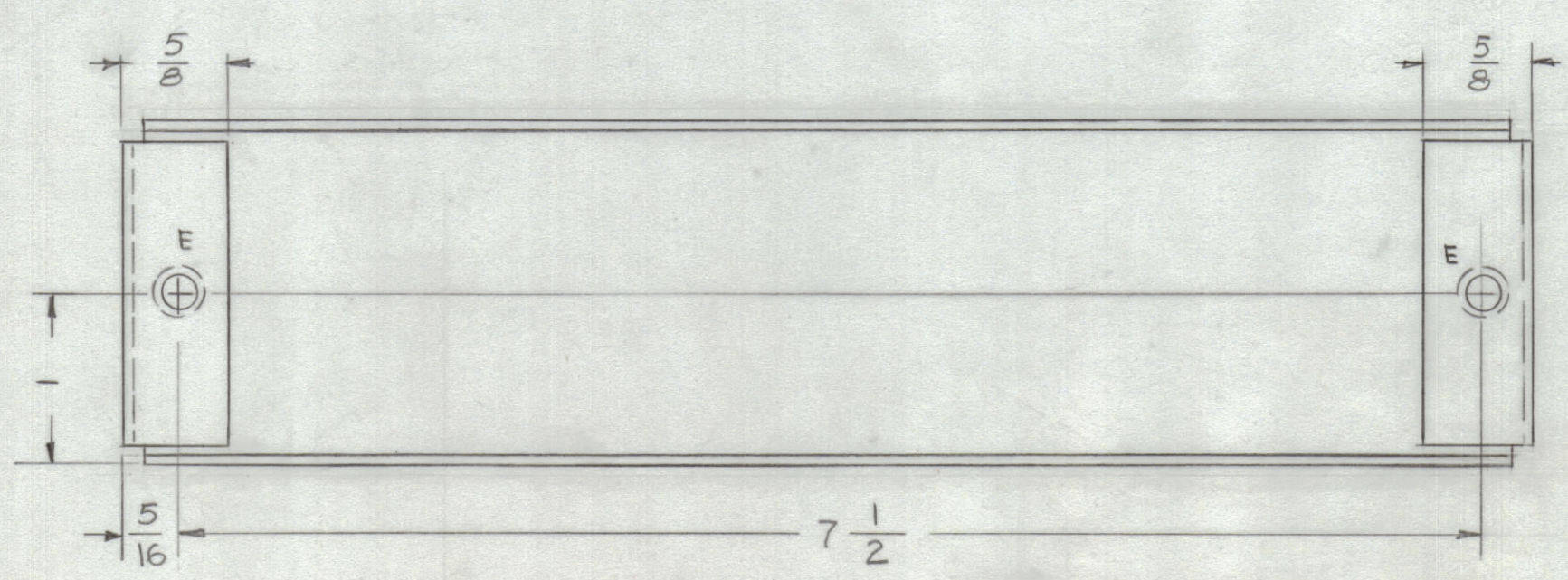
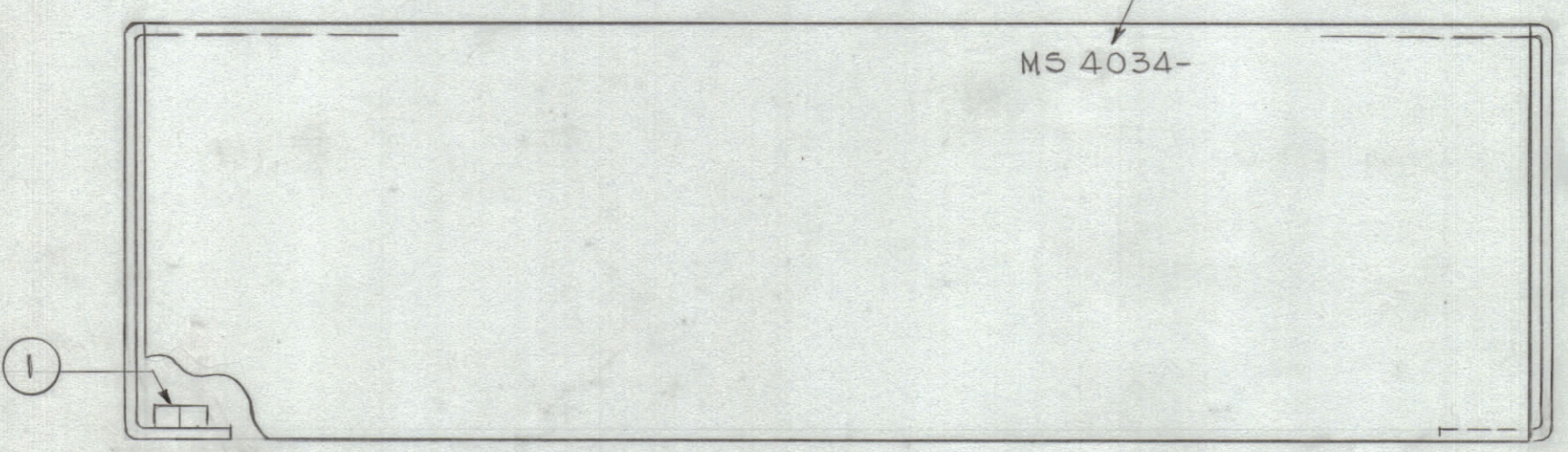


METAL STAMP TMC P/No. 1/8 HIGH  
GOTHIC WITH LATEST REVISION LETTER

MS 4034-

HOLE	DESCRIPTION	REQ.
A	5/32 DIA.	2
B	1/8 DIA.	4
C	1" DIA.	1
D	7/8 DIA.	1
E	.191 - .194 DIA.	2

MOUNT IN 2  
"E" HOLES



REF: LD 1608

2	1	NT129-632-4	NUT ROUND, SWAGE TYPE	E
REQ'D.	ITEM	PART NUMBER	DESCRIPTION	SYMBOL
M. STURMER LIST OF MATERIAL				
MATERIAL .064 THK. ALUMINUM 5052-H32			THE TECHNICAL MATERIEL CORP. MAMARONECK, NEW YORK	
FINISH 5404 YEL. IRIDITE			TITLE CHASSIS, OUTPUT	
UNLESS OTHERWISE SPECIFIED DIMENSIONS ARE IN INCHES AND INCLUDE CHEMICALLY APPLIED OR PLATED FINISHES			DRAWN G.D.L. DATE 9-21-64	FINAL APPROVAL [Signature] DATE 9-23-64
DECIMALS .X ± .05 .XX ± .01 .XXX ± .005			TOLERANCES ± 1/64 ANGLES ± 0° 30'	ELECT. DES. [Signature] DATE 9-24-64
THE CONTENTS OF THIS DRAWING ARE THE EXCLUSIVE PROPERTY OF THE TECHNICAL MATERIEL CORP. ITS UNAUTHORIZED USE OR REPRODUCTION IN WHOLE OR IN PART IS STRICTLY FORBIDDEN.			MECH. DES. [Signature] DATE 9-24-64	SHEET MS 4034 REV. LTR. Ø

- UNLESS OTHERWISE SPECIFIED:
1. USE MATERIAL THICKNESS FOR MAXIMUM RADIUS ON ALL BENDS
  2. ALL ANGULAR BENDS 90 DEGREES
  3. REMOVE ALL BURRS AND SHARP EDGES
  4. MOUNT INSERTS AFTER FINISHING

NOTES

MS 4034 Ø