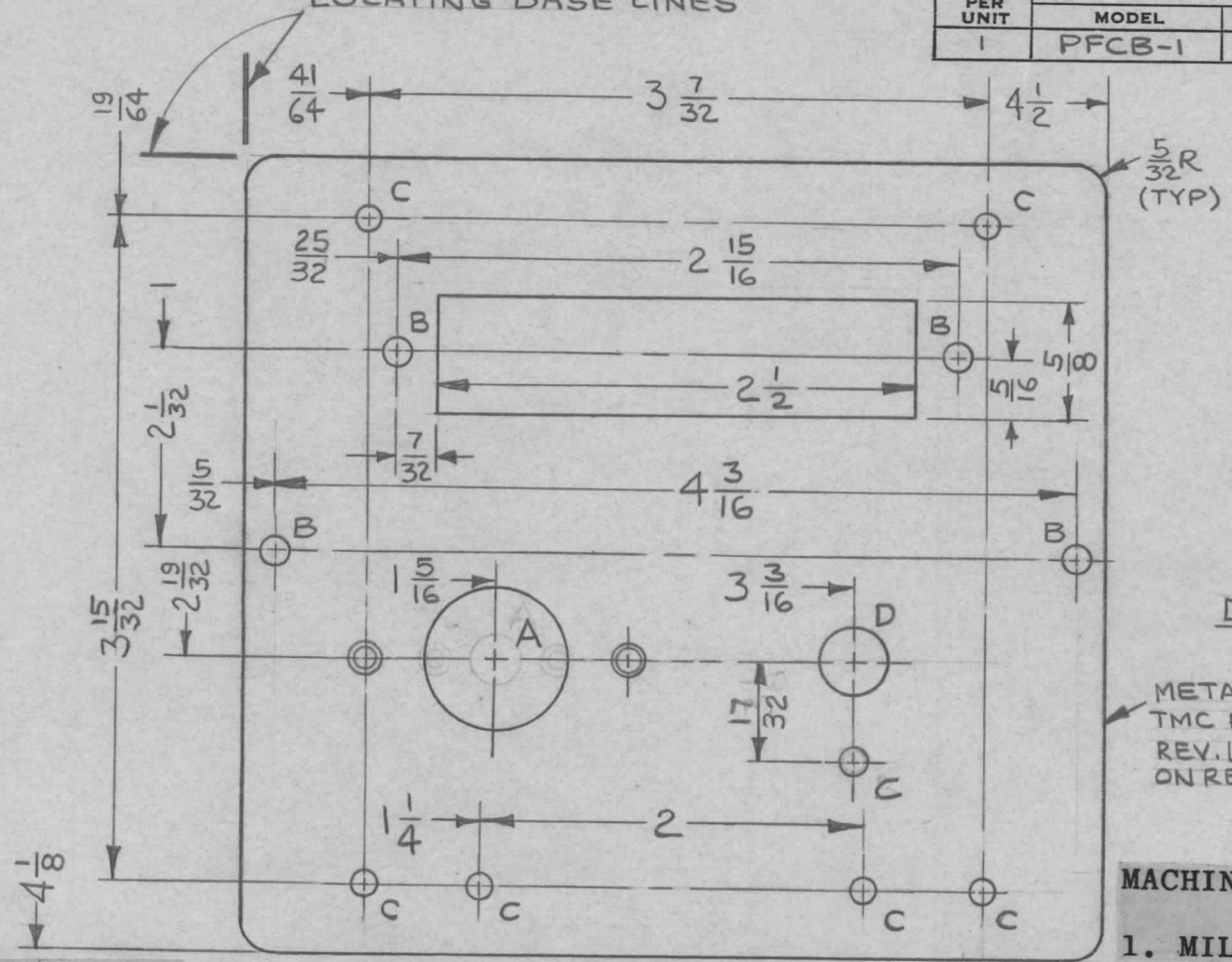


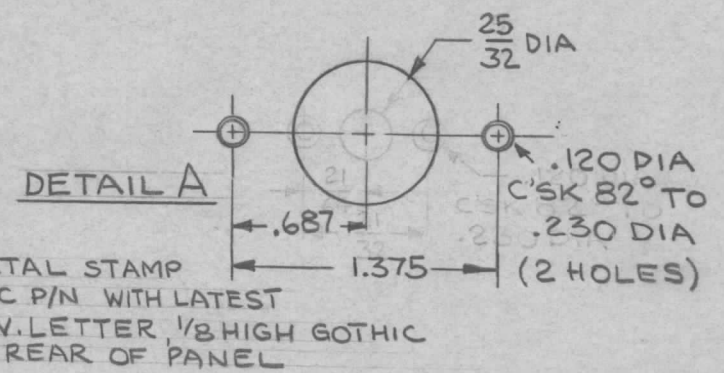
LOCATING BASE LINES

REQ. PER UNIT	USED ON		
	MODEL	ASS'Y. NO.	DATE
1	PFCB-1		

MS4030 A



HOLE	DESCRIPTION	REQ
A	SEE DETAIL	1
B	5/32 DIA	4
C	9/64 DIA	7
D	3/8 DIA	1



METAL STAMP
TMC P/N WITH LATEST
REV. LETTER, 1/8 HIGH GOTHIC
ON REAR OF PANEL

- MACHINING:**
1. MILL ALL EDGES.

FINISH NOTES:

1. S404 - IRIDITE 14-2 AL-COAT.
2. S114 - ZINC CHROMATE PRIMER) FRONT AND
3. S115 - SMOOTH GRAY ENAMEL) EDGES ONLY

2. HOLES MUST BE DRILLED, UNLESS OTHERWISE SPECIFIED.
3. LATERAL BOW OF PANEL MUST BE KEPT TO .031 TOLERANCE.
4. PANEL MUST BE FREE OF ALL MACHINING MARKS, GOUGES AND SCRATCHES. IF NECESSARY, SAND FRONT OF PANEL WITH NO. 120 GRIT SANDPAPER.

UNLESS OTHERWISE SPECIFIED DIMENSIONS ARE IN INCHES AND INCLUDE CHEMICALLY APPLIED OR PLATED FINISHES							SCALE	1:1			REQ. ITEM	PART NO.	REF: LD1606	DESCRIPTION	SYMBOL
A	DETAIL "A" REV. HOLE 25/32 W. 9/32		12.23.64	13157	LB					1/8 THICK		THE TECHNICAL MATERIEL CORP. MAMARONECK, NEW YORK			
Ø	ORIGINAL RELEASE FOR PRODUCTION		12.11.64	Ø	JL					STOCK SIZE		PANEL, FRONT			
X ₁	REDRAWN W/CHANGES		10.16.64	X ₁	LB					ALUMINUM		DOPPLER CORRECTOR			
SYM	DESCRIPTION		DATE	CH. NO.	DRAFTS	CHECKER	ENG. APP.			MATERIAL					
	DECIMALS .X ± .05 .XX ± .01 .XXX ± .005		FRACTIONS ± 1/64 ANGLES ± 0° 30'		CODE	A				2024 T3	#	10.16.64	@ 10-22-64	LB	
TOLERANCES										TYPE & TEMPER	HEAT TREAT. SPEC.	DRAWN	CHECKED	FINAL APPROVAL	
										SEE NOTES				MS4030 A	
										FINISH & SPEC. NO.	ELEC. DES. APP.	MECH. DES. APP.			