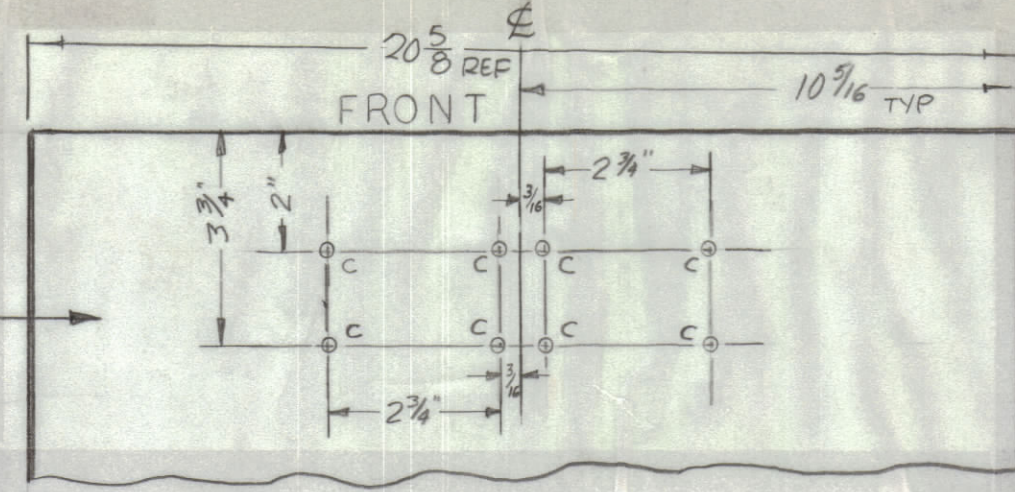


REVISIONS						
ZONE	SYM	DESCRIPTION	DATE	E.M.N. NO.	DRAFT	CHKD
X		EXPERIMENTAL RELEASE	1.14.65	X	MSB	
Ø		ORIGINAL RELEASE FOR PRODUCTION	6-10-65	—	JC	

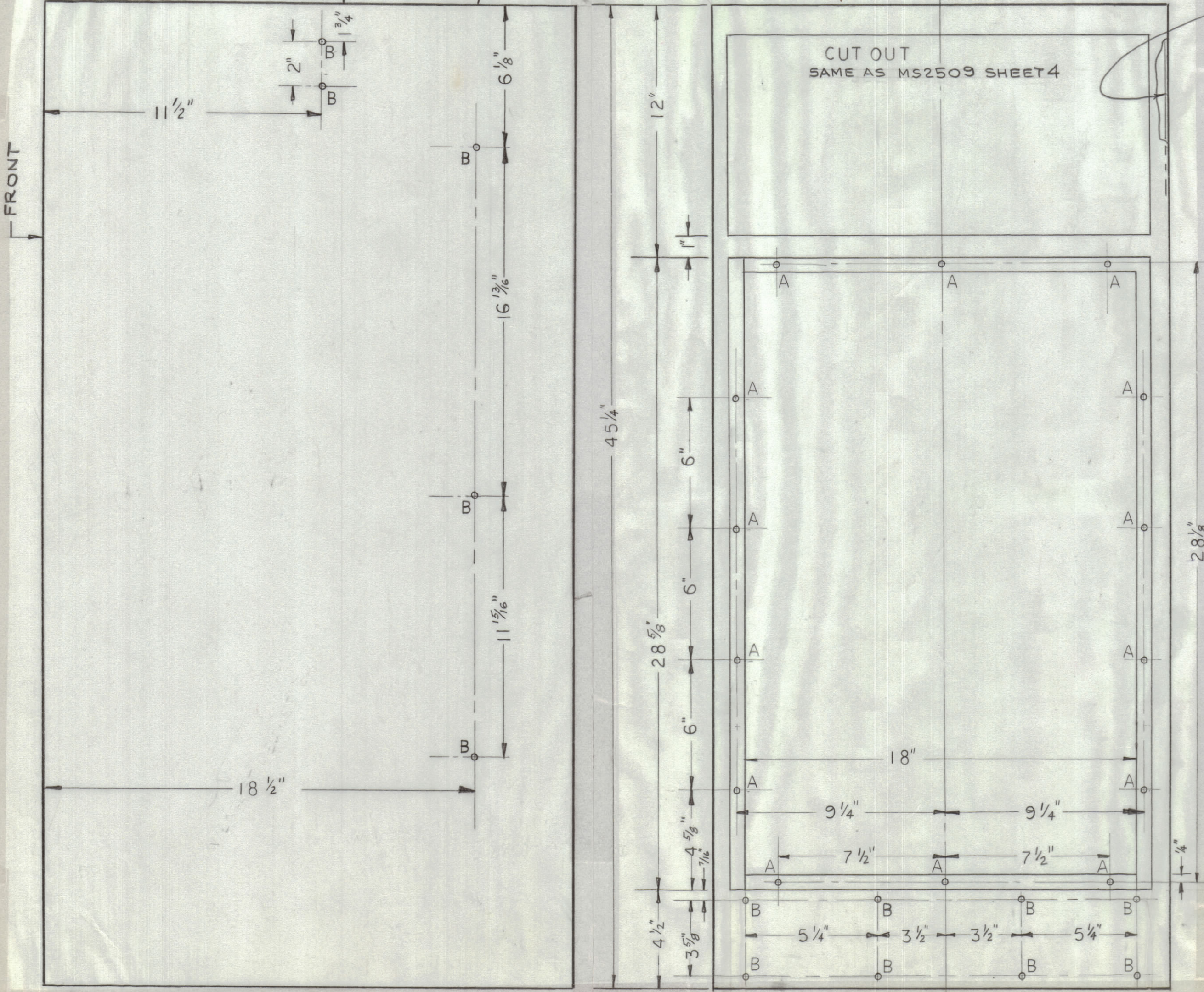
TOP VIEW



METAL STAMP TMC PART NO.  
1/8 HIGH GOTHIC W/LATEST  
REV. LETTER, ON INSIDE.

- A - DRILL & TAP FOR 10-32 - 14 REQ
- B - 1/64 DIA 13 REQ
- C - .070 DIA 8 REQ

CUT OUT  
SAME AS MS2509 SHEET 4



MS4024 Ø

REQ'D.	ITEM	PART NUMBER	DESCRIPTION	SYMBOL
1	1	MS2509-4	CABINET, ELEC. EQUIP. - BASIC	

MATERIAL		THE TECHNICAL MATERIEL CORP. MAMARONECK, NEW YORK	
FINISH		TITLE CABINET, ELECTRICAL EQUIP.	
—		—	

QTY./UNIT	MODEL USED ON	ASS'Y. NO.
1	RAK106	A4081
SCALE	CODE	
—	A	

UNLESS OTHERWISE SPECIFIED DIMENSIONS ARE IN INCHES AND INCLUDE CHEMICALLY APPLIED OR PLATED FINISHES	DRAWN	DATE	FINAL APPROVAL	DATE
DECIMALS .X ± .05 .XX ± .01 .XXX ± .005  FRACTIONS ± 1/64 ANGLES ± 0° 30'	CHECKED	1.14.65	[Signature]	6/10/65
	ELECT. DES.	6-10-65		
	MECH. DES.			
			MS4024	Ø

NOTES

THE CONTENTS OF THIS DRAWING ARE THE EXCLUSIVE PROPERTY  
OF THE TECHNICAL MATERIEL CORP. ITS UNAUTHORIZED USE OR  
REPRODUCTION IN WHOLE OR IN PART IS STRICTLY FORBIDDEN.