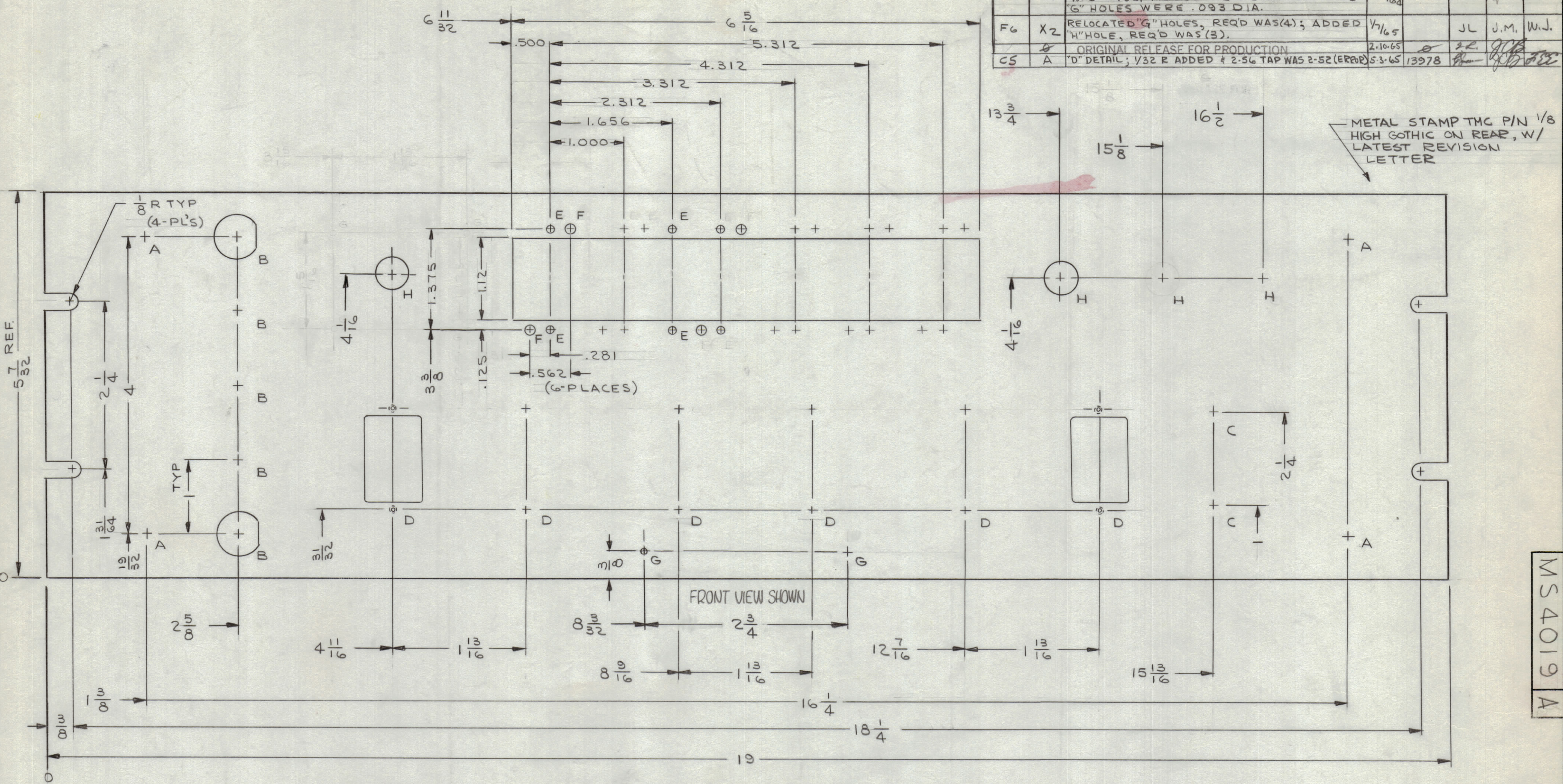
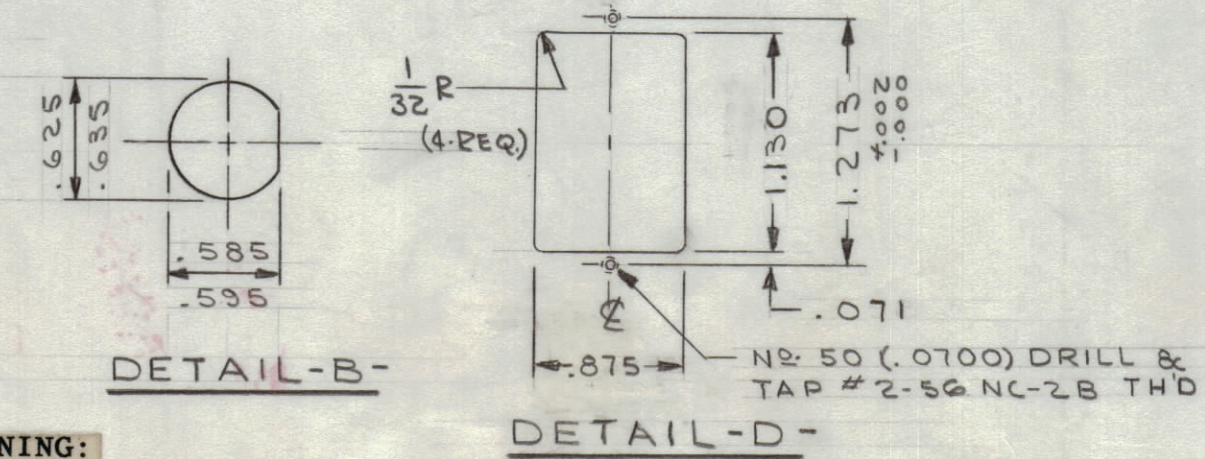


REVISIONS							
ZONE	SYM	DESCRIPTION	DATE	E.M.N. NO.	DRAFT	CHKD	APPO
	X1	"H" HOLES WERE "C"; .859 DET. "D" DIM. WAS 25/32; ADDED # 2-52 TAPPED HOLES "G" HOLES WERE .093 DIA.	10/2/64		JL	JM	W.J.
F6	X2	RELOCATED "G" HOLES, REQ'D WAS (4); ADDED "H" HOLE, REQ'D WAS (3).	4/16/65		JL	J.M.	W.J.
CS	A	ORIGINAL RELEASE FOR PRODUCTION	2-10-65				
	A	"D" DETAIL; 1/32 R ADDED & 2-56 TAP WAS 2-52 (ERRR)	5-3-65	13978			



HOLE LEGEND		
HOLE	DESCRIPTION	REQ'D
A	13/64 DIA	4
B	SEE DETAIL	5
C	15/32 DIA	2
D	SEE DETAIL	6
E	3/64 DIA	14
F	5/32 DIA	12
G	NO. 48 (.0760) DRILL	2
H	13/32	4



**MACHINING:**

- MILL ALL EDGES.
- HOLES MUST BE DRILLED, UNLESS OTHERWISE SPECIFIED.
- LATERAL BOW OF PANEL MUST BE KEPT TO .031 TOLERANCE.
- PANEL MUST BE FREE OF ALL MACHINING MARKS, GOUGES AND SCRATCHES. IF NECESSARY, SAND FRONT OF PANEL WITH NO. 120 GRIT SANDPAPER.

**FINISH NOTES:**

- S404 - IRIDITE 14-2 AL-COAT.
- S114 - ZINC CHROMATE PRIMER) FRONT AND
- S115 - SMOOTH GRAY ENAMEL ) EDGES ONLY

**NOTES**

1	RTIA-1	A3858
Q'TY./UNIT	MODEL USED ON	ASS'Y. NO.
SCALE	CODE	
1:1	A	

THE CONTENTS OF THIS DRAWING ARE THE EXCLUSIVE PROPERTY OF THE TECHNICAL MATERIEL CORP. ITS UNAUTHORIZED USE OR REPRODUCTION IN WHOLE OR IN PART IS STRICTLY FORBIDDEN.

REF. LD 1598

REQ'D.	ITEM	PART NUMBER	DESCRIPTION	SYMBOL
F. E. EATON LIST OF MATERIAL				
MATERIAL		3/16 THK ALUMINUM 2024-T3		
FINISH		SEE NOTES		
THE TECHNICAL MATERIEL CORP.		MAMARONECK, NEW YORK		
TITLE		PANEL, FRONT		
DRAWN	J. LESHINSKI	DATE	2/9/65	FINAL APPROVAL
CHECKED	J.M. JORDAN	DATE	2/19/65	
ELECT. DES.	J.M. JORDAN	DATE	2/19/65	
MECH. DES.	W. JORDAN	DATE	2/18/65	
UNLESS OTHERWISE SPECIFIED DIMENSIONS ARE IN INCHES AND INCLUDE CHEMICALLY APPLIED OR PLATED FINISHES		MS 4019 A		
DECIMALS	.X ± .05	FRACTIONS	± 1/64	
	.XX ± .01	ANGLES	± 0° 30'	
	.XXX ± .005	TOLERANCES		