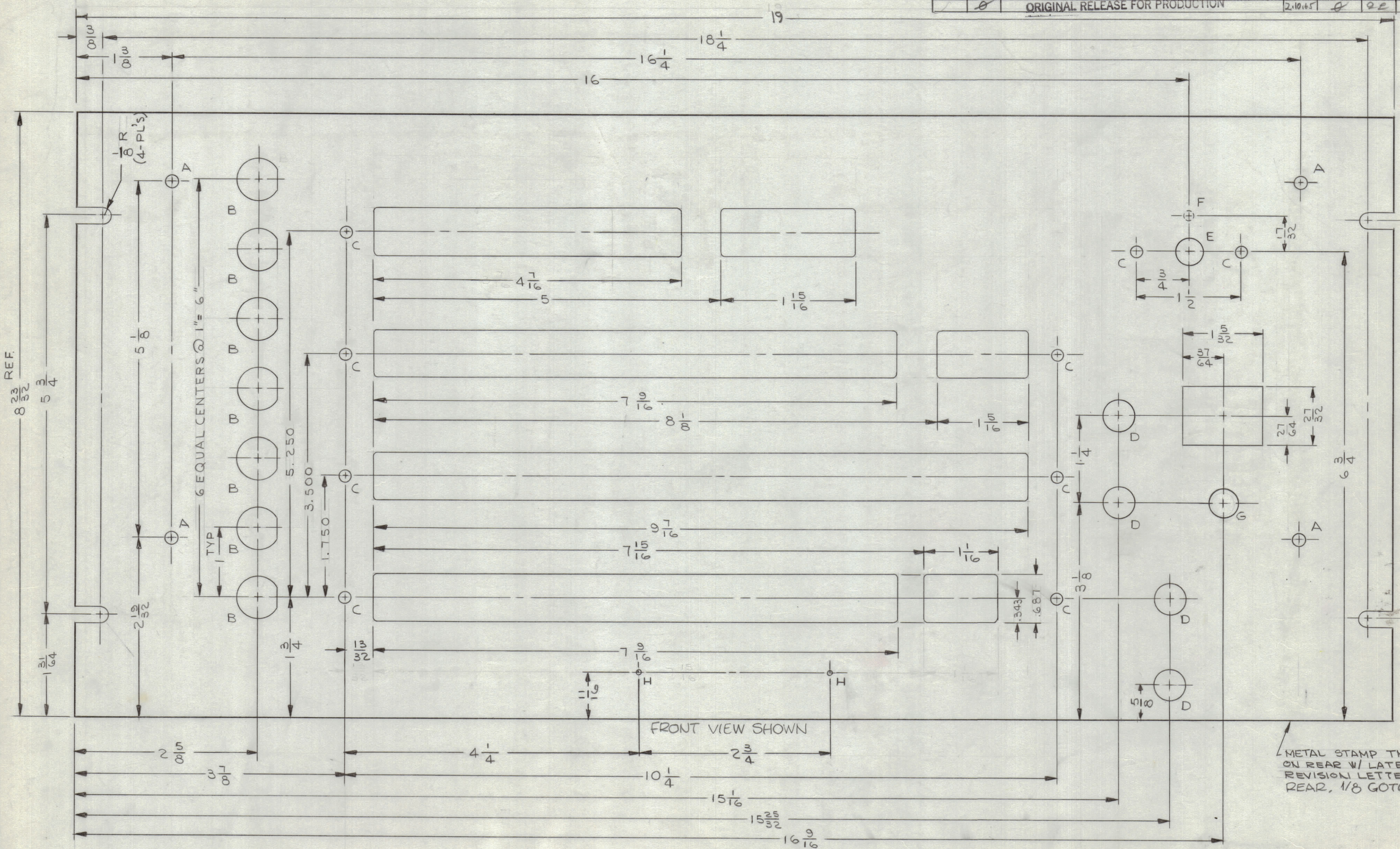


REVISIONS							
ZONE	SYM	DESCRIPTION	DATE	E.M.N. NO.	DRAFT	CHKD	APPD
	X ₁	"H" HOLE WAS .033 DIA.	10/29/64		JL	JM	WJ
E2	X ₂	"G" HOLE WAS 11/32 DIA	11/9/64		JL	JM	WJ
E2	X ₃	"G" HOLE WAS .437 ± .0005 DIA	11/9/64		JL	JM	WJ
	Ø	ORIGINAL RELEASE FOR PRODUCTION	2.10.65		EE	JTB	

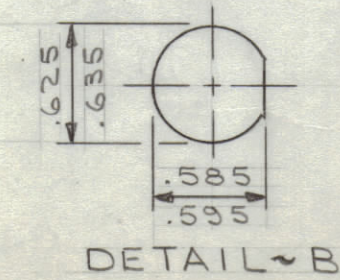


METAL STAMP TMC P/N ON REAR W/ LATEST REVISION LETTER ON REAR, 1/8 GOTHIC.

MS4018

HOLE LEGEND		
HOLE	DESCRIPTION	REQ'D
A	13/64 DIA	4
B	SEE DETAIL	7
C	3/16 DIA	9
D	15/32 DIA	4
E	13/32 DIA	1
F	5/32 DIA X 1/8 DEEP	1
G	13/32 DIA	1
H	NO. 48 (.0760) DR	2

- MACHINING:**
- MILL ALL EDGES.
 - HOLES MUST BE DRILLED, UNLESS OTHERWISE SPECIFIED.
 - LATERAL BOW OF PANEL MUST BE KEPT TO .031 TOLERANCE.
 - PANEL MUST BE FREE OF ALL MACHINING MARKS, GOUGES AND SCRATCHES. IF NECESSARY, SAND FRONT OF PANEL WITH NO. 120 GRIT SANDPAPER.
- FINISH NOTES:**
- S404 - IRIDITE 14-2 AL-COAT.
 - S114 - ZINC CHROMATE PRIMER) FRONT AND
 - S115 - SMOOTH GRAY ENAMEL) EDGES ONLY



REF. LD 1597

REQ'D.	ITEM	PART NUMBER	DESCRIPTION	SYMBOL
F. E. EATON LIST OF MATERIAL				
MATERIAL		THE TECHNICAL MATERIEL CORP.		
3/16 THK ALUMINUM		MAMARONECK, NEW YORK		
2024-T3		TITLE		
FINISH		PANEL, FRONT		
SEE NOTES		DRAWN		
		J. LESHINSKI		
		DATE		
		7/17/64		
		CHECKED		
		DATE		
		2/18/65		
		ELECT. DES.		
		MECH. DES.		
		DATE		
		2/16/65		
		SHEET		
		MS4018		
		REV. LTR.		
		Ø		

Q'TY./UNIT	MODEL USED ON	ASS'Y. NO.
1	RTPA-1	A3856
SCALE	CODE	
1:1	A	

NOTES

THE CONTENTS OF THIS DRAWING ARE THE EXCLUSIVE PROPERTY OF THE TECHNICAL MATERIEL CORP. ITS UNAUTHORIZED USE OR REPRODUCTION IN WHOLE OR IN PART IS STRICTLY FORBIDDEN.

UNLESS OTHERWISE SPECIFIED DIMENSIONS ARE IN INCHES AND INCLUDE CHEMICALLY APPLIED OR PLATED FINISHES

DECIMALS .X ± .05 .XX ± .01 .XXX ± .005
 FRACTIONS ± 1/64 ± 0° 30'