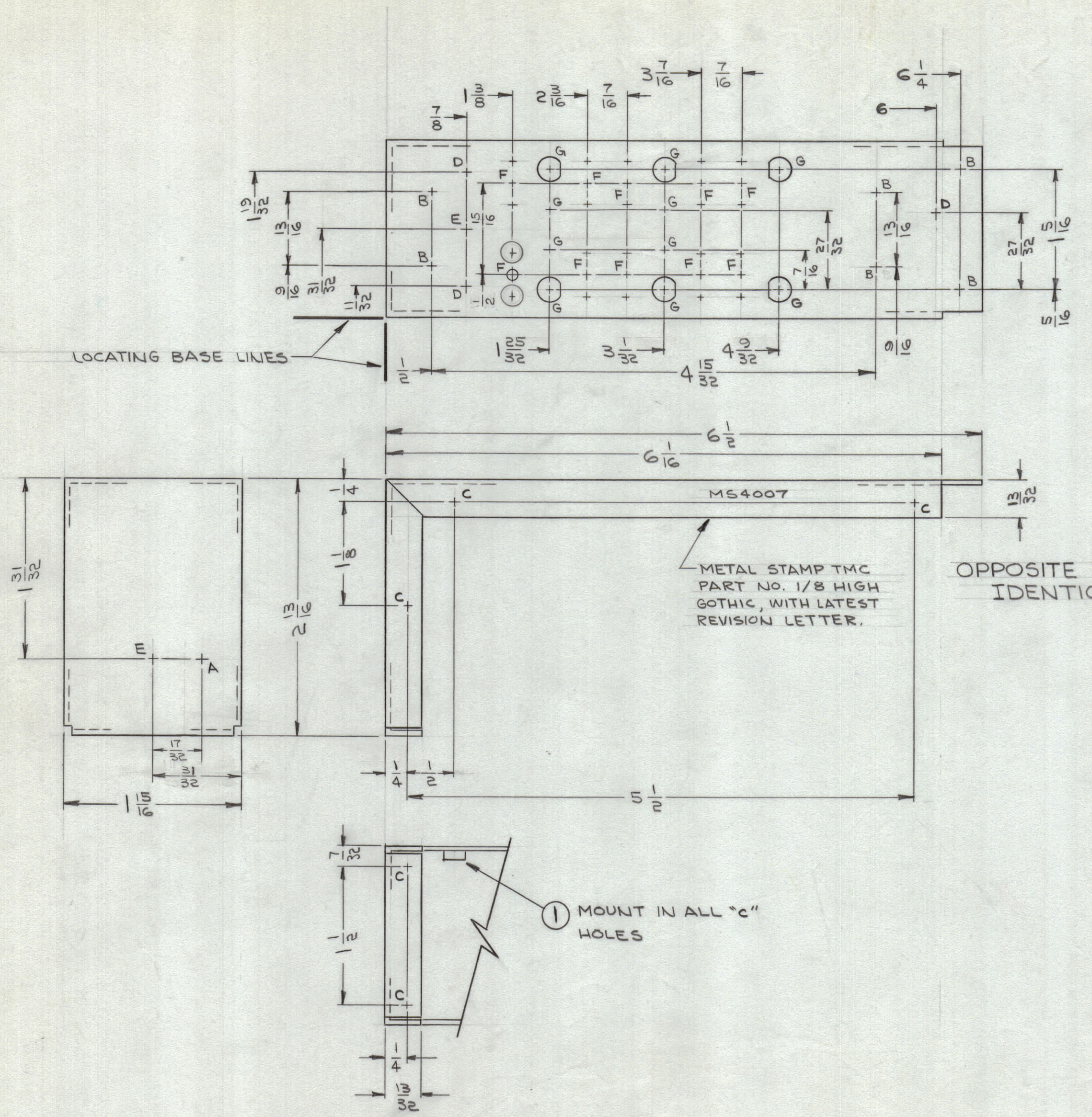
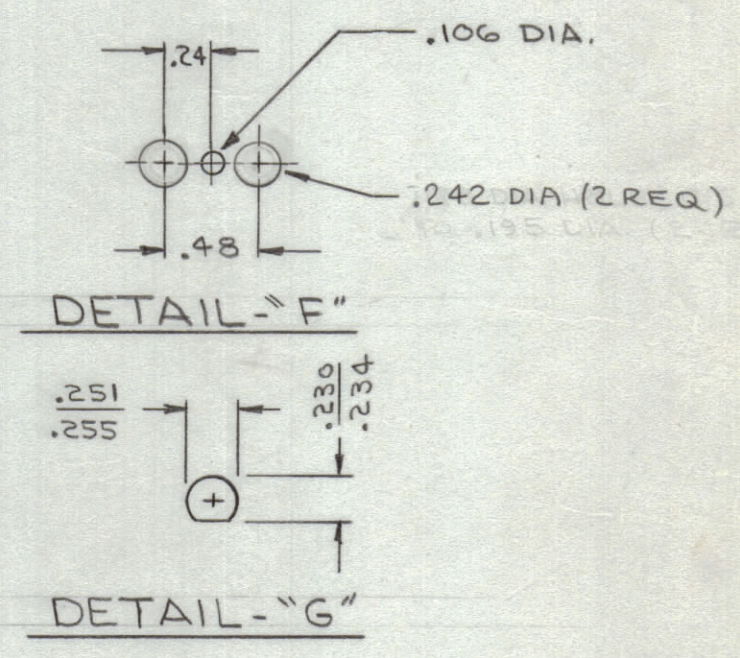


REVISIONS						
ZONE	SYM	DESCRIPTION	DATE	E.M.N. NO.	DRAFT	CHKD
-	X	EXPERIMENTAL RELEASE	8-26-64	X	<i>G. Leman</i>	
D7	X1	DIMS ON LEFT SIDE REVERSED (ERROR)	9-3-64	X1	<i>G. Leman</i>	
-	X2	ON TOP VIEW 15/16 WAS 1, 1/2 WAS 15/32 ON DETAIL "F" 2 HOLES WERE C'SUNK .172 TO .195 DIA.	9.11.64	X2	<i>JFB</i>	
		ORIGINAL RELEASE FOR PRODUCTION	9-28-64		<i>JL</i>	



LEGEND		
HOLE	DESCRIPTION	REQ.
A	9/64 DIA.	1
B	5/32 DIA.	6
C	.161-.164 DIA.	8
D	5/16 DIA.	3
E	3/8 DIA.	2
F	SEE DETAIL	10
G	SEE DETAIL	10



REF: LD1603

REQ'D.	ITEM	PART NUMBER	DESCRIPTION	SYMBOL
8	1	NT129-440-3	NUT, ROUND, SWAGE TYPE	C

M. GELLMAN		LIST OF MATERIAL	
MATERIAL	.040 ALUMINUM 5052-H32	THE TECHNICAL MATERIEL CORP. MAMARONECK, NEW YORK	
FINISH	S404-YELLOW IRIDITE	TITLE CHASSIS, ELECTRICAL (SPECTRUM FILTER)	
DRAWN	<i>G. Leman</i>	DATE	8-26-64
CHECKED	<i>@</i>	DATE	9-16-64
ELECT. DES.		DATE	
MECH. DES.	<i>M. Gellman</i>	DATE	9-28-64

Q'TY./UNIT	MODEL USED ON	ASS'Y. NO.
5	LFSB-1	

SCALE	CODE
1:1	A

DECIMALS	FRACTIONS	TOLERANCES	ANGLES
.X ± .05	± 1/64		
.XX ± .01			
.XXX ± .005			± 0° 30'

UNLESS OTHERWISE SPECIFIED:

- USE MATERIAL THICKNESS FOR MAXIMUM RADIUS ON ALL BENDS
- ALL ANGULAR BENDS 90 DEGREES
- REMOVE ALL BURRS AND SHARP EDGES
- MOUNT INSERTS AFTER FINISHING

NOTES

THE CONTENTS OF THIS DRAWING ARE THE EXCLUSIVE PROPERTY OF THE TECHNICAL MATERIEL CORP. ITS UNAUTHORIZED USE OR REPRODUCTION IN WHOLE OR IN PART IS STRICTLY FORBIDDEN.

MS4007