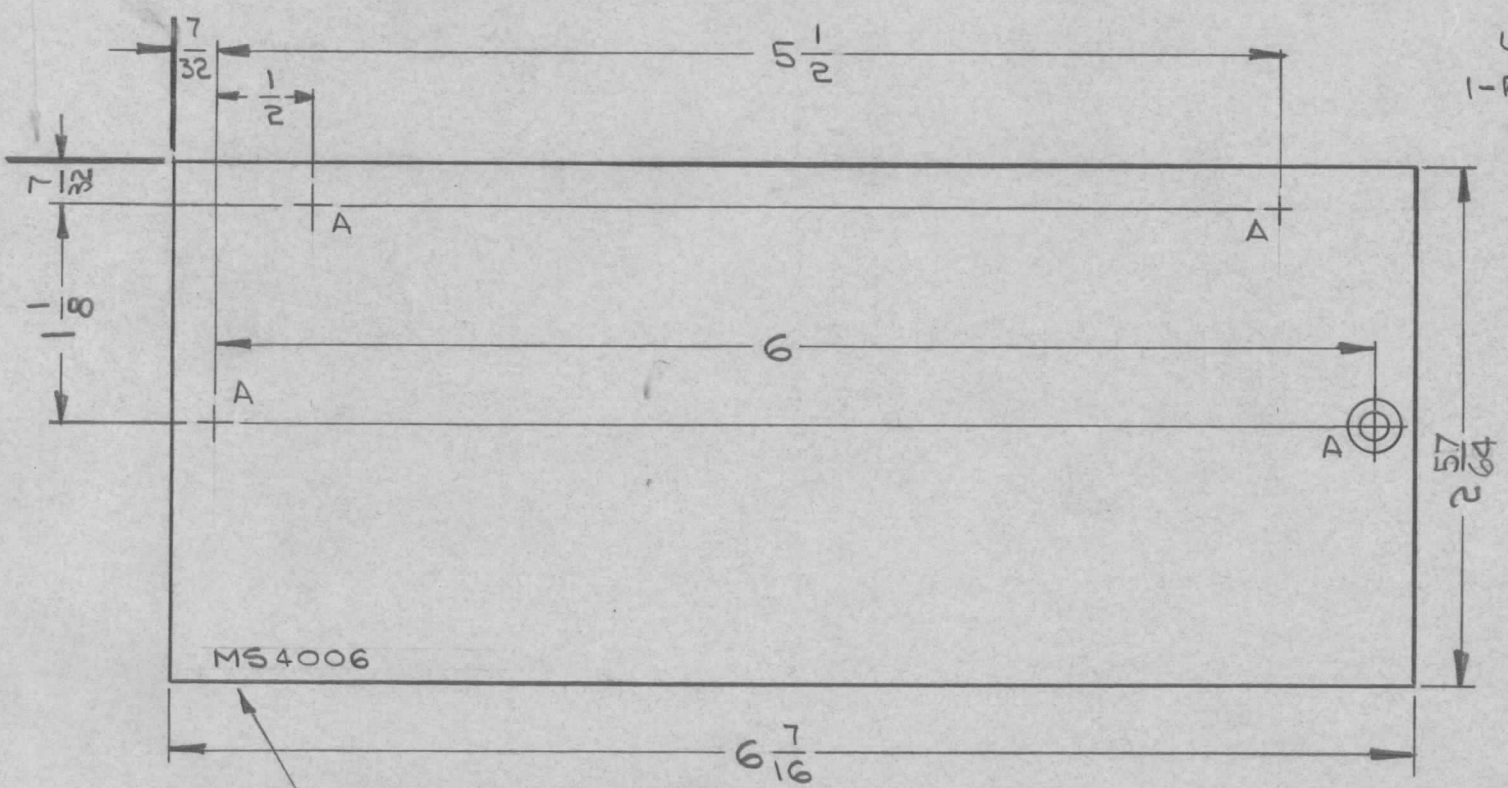


REQ. PER UNIT	USED ON		MS4006	Ø
	MODEL	ASSY. NO.		
10	LFSB-1		8-24-64	



UNLESS OTHERWISE SPEC.  
1-REMOVE ALL BURRS &  
SHARP EDGES.

MS4006

METAL STAMP TMC  
PART NO. 1/8 HIGH  
GOTHIC, WITH LATEST  
REVISION LETTER.

HOLE	DESCRIPTION	REQ
A	.120 DIA HOLE, C'SINK 82° TO .230 DIA	4

SYM	DESCRIPTION	DATE	CH. NO.	DRAFTS	CHECKER	ENG. APP.	REQ. ITEM	PART NO.	GELLMAN	DESCRIPTION	SYMBOL	
Ø	ORIGINAL RELEASE FOR PRODUCTION	9.28.64	Ø	ØL						THE TECHNICAL MATERIEL CORP. MAMARONECK, NEW YORK  COVER, SIDE (SPECTRUM FILTER)		
X1	2 <sup>57</sup> / <sub>64</sub> WAS 2 <sup>11</sup> / <sub>16</sub>	9/11/64	X1	@				.032 THK STOCK SIZE				
X	EXPER. RELEASE	8-24-64	X	<i>[Signature]</i>				ALUMINUM				
								MATERIAL				
	UNLESS OTHERWISE SPECIFIED DIMENSIONS ARE IN INCHES AND INCLUDE CHEMICALLY APPLIED OR PLATED FINISHES	SCALE	1:1					5052-H32		<i>[Signature]</i> @ 9-15-64	<i>[Signature]</i>	
	DECIMALS .X ± .05 .XX ± .01 .XXX ± .005	FRACTIONS ± 1/64 ANGLES ± 0° 30'	CODE	A				TYPE & TEMPER	HEAT TREAT. SPEC.	DRAWN	CHECKED	FINAL APPROVAL
	TOLERANCES						5404-YELLOW IRIDITE			<i>[Signature]</i>	MS4006	Ø
							FINISH & SPEC. NO.		ELEC. DES. APP.	MECH. DES. APP.		