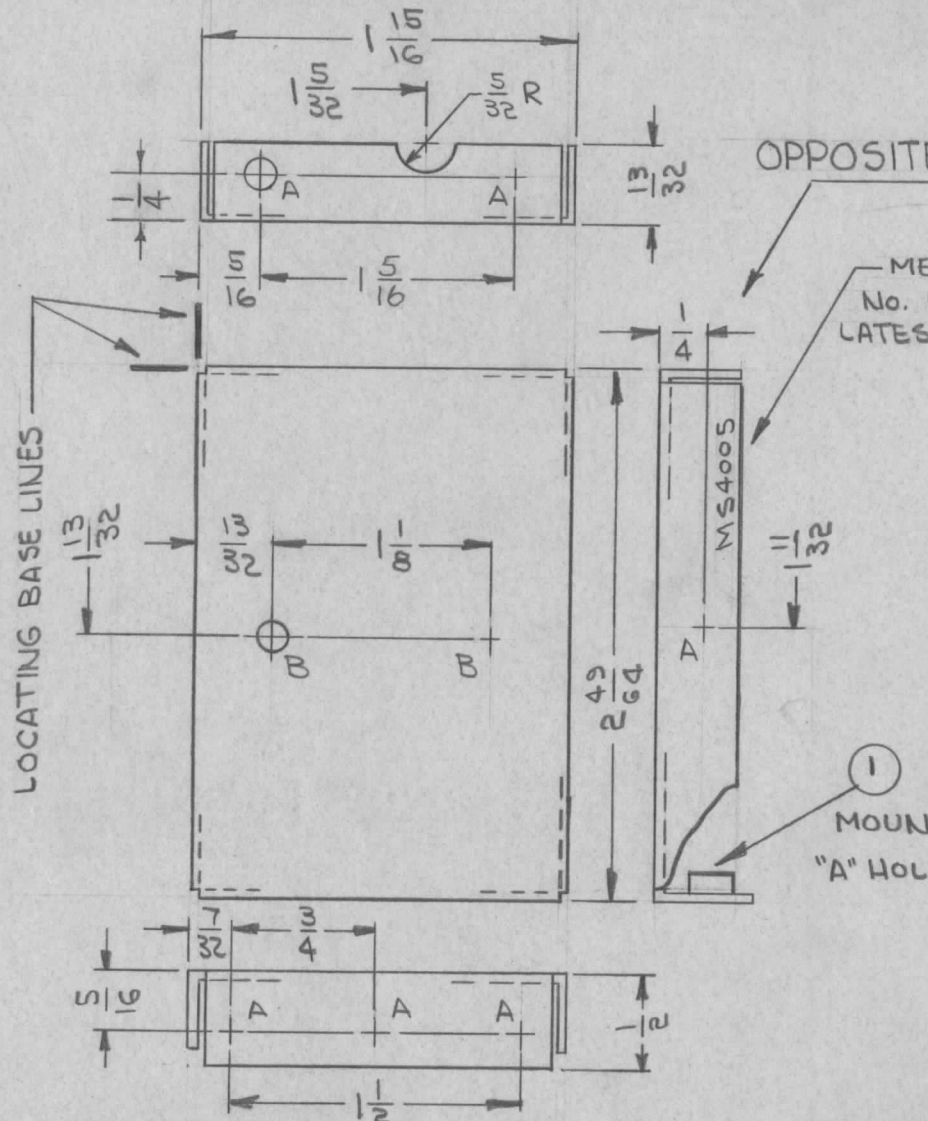


REQ. PER UNIT	USED ON			MS4005 \emptyset
	MODEL	ASS'Y. NO.	DATE	
5	LFSB-1		8-24-64	



OPPOSITE SIDE IDENTICAL

METAL STAMP TMC PART No. 1/8 HIGH GOTHIC, WITH LATEST REVISION LETTER.

HOLE	DESCRIPTION	REQ.
A	.161-.164 DIA	7
B	5/32 DIA	2

UNLESS OTHERWISE SPECIFIED:

1. USE MATERIAL THICKNESS FOR MAXIMUM RADIUS ON ALL BENDS
2. ALL ANGULAR BENDS 90 DEGREES
3. REMOVE ALL BURRS AND SHARP EDGES
4. MOUNT INSERTS AFTER FINISHING

MOUNT IN ALL "A" HOLES.

7	1	NT1290440-3	NUT, ROUND, SWAGE TYPE	A			
REQ. ITEM	PART NO.		DESCRIPTION	SYMBOL			
	.040		THE TECHNICAL MATERIEL CORP. MAMARONECK, NEW YORK				
	STOCK SIZE						
	ALUMINIUM			PLATE, REAR (SPECTRUM FILTER)			
SYM		DESCRIPTION	DATE	CH. NO.	DRAFTS	CHECKER	ENG. APP.
UNLESS OTHERWISE SPECIFIED DIMENSIONS ARE IN INCHES AND INCLUDE CHEMICALLY APPLIED OR PLATED FINISHES		SCALE		1:1			
DECIMALS .X ± .05 .XX ± .01 .XXX ± .005	TOLERANCES	FRACTIONS ± 1/64 ANGLES ± 0° 30'	CODE	A			
5052-H32		HEAT TREAT. SPEC.	DRAWN		CHECKED		FINAL APPROVAL
S404 YELLOW IRIDITE		FINISH & SPEC. NO.		ELEC. DES. APP.		MECH. DES. APP.	
				MS4005 \emptyset			