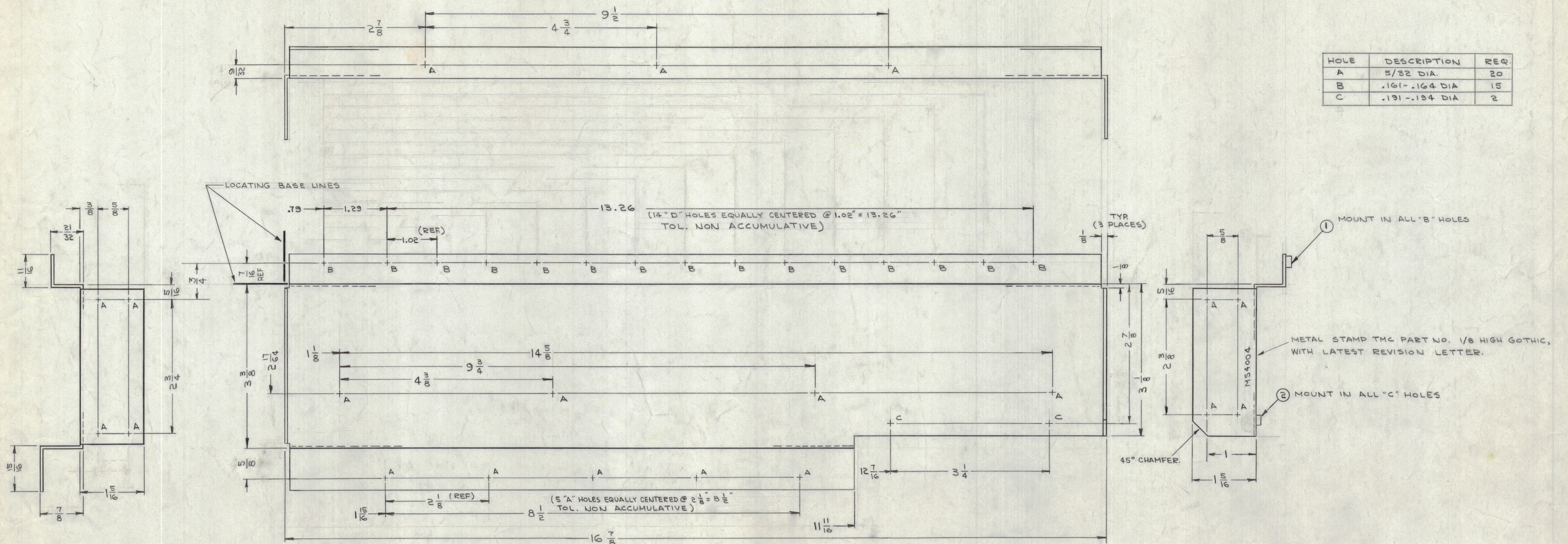


		REVISIONS					
ZONE	SYM	DESCRIPTION	DATE	E.M.N. NO.	DRAFT	CHKD	APPD
X		EXPER. RELEASE	8-25-64	X			
X1		DIM 17/32 WAS 5/8, IT. 2 RELOC. TO OUTSIDE OF CHASSIS	8-27-64	X1	JTB		
B10	X2	DIM 5/8 WAS 17/32 ON (C) "A" HOLES	8-31-64	X2			
D10,10	X3	DIM 3/4 ADDED, REF. ADD. TO 7/16	9-8-64	X3	EF		
		ORIGINAL RELEASE FOR PRODUCTION	9-28-64				

HOLE	DESCRIPTION	REQ.
A	5/32 DIA.	20
B	.161-.164 DIA	15
C	.191-.194 DIA	2



- UNLESS OTHERWISE SPECIFIED:
- USE MATERIAL THICKNESS FOR MAXIMUM RADIUS ON ALL BENDS
  - ALL ANGULAR BENDS 90 DEGREES
  - REMOVE ALL BURRS AND SHARP EDGES
  - MOUNT INSERTS AFTER FINISHING

UNLESS OTHERWISE SPECIFIED DIMENSIONS ARE IN INCHES AND INCLUDE CHEMICALLY APPLIED OR PLATED FINISHES	
DECIMALS X ± .05 XX ± .01 XXX ± .005	FRACTIONS ± 1/64 ANGLES ± 0° 30'
TOLERANCES	

Q'TY./UNIT	MODEL USED ON	ASSY. NO.
SCALE	CODE	
1:1	A	

2	2	NT129-632-4	NUT, ROUND, SWAGE TYPE	C
15	1	NT129-440-4	NUT, ROUND, SWAGE TYPE	B
M. GELLMAN LIST OF MATERIAL				
MATERIAL		THE TECHNICAL MATERIEL CORP. MAMARONECK, NEW YORK		
.064 ALUMINUM 5052-H32		TITLE CHASSIS, ELECTRICAL, MAIN-FRONT		
FINISH S404-YELLOW IRIDITE		DATE 8-25-64		
UNLESS OTHERWISE SPECIFIED DIMENSIONS ARE IN INCHES AND INCLUDE CHEMICALLY APPLIED OR PLATED FINISHES		DATE 9-16-64		
DECIMALS X ± .05 XX ± .01 XXX ± .005		ELECT. DES. DATE 9-16-64		
FRACTIONS ± 1/64 ANGLES ± 0° 30'		MECH. DES. DATE 9-16-64		
TOLERANCES		REV. LTR. MS4004		

NOTES

MS4004