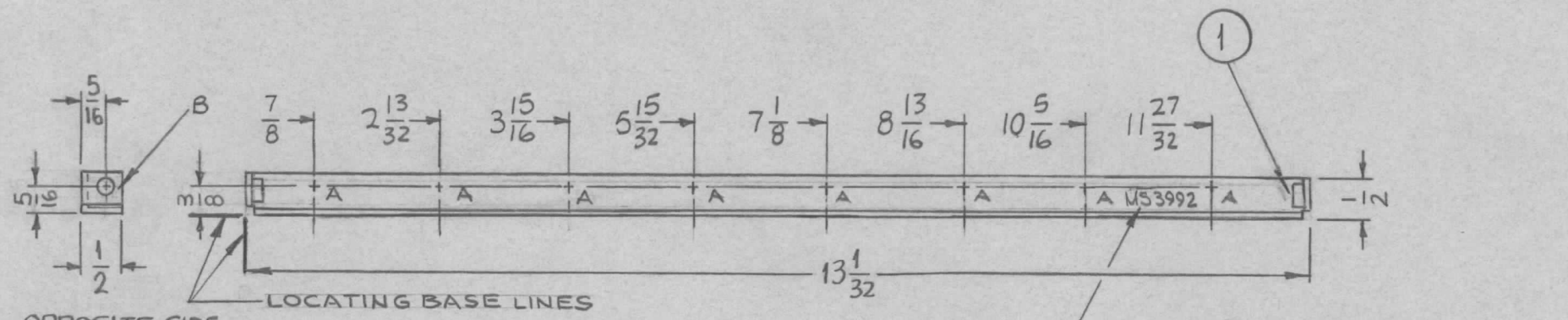


REQ. PER UNIT	USED ON			MS3992 Ø
	MODEL	ASS'Y. NO.	DATE	
1	LFCA-1		8-21-64	

HOLES	DESCRIPTION	REQ.
A	9/64 DIA.	8
B	.191-.194 DIA.	2



- UNLESS OTHERWISE SPECIFIED:
1. USE MATERIAL THICKNESS FOR MAXIMUM RADIUS ON ALL BENDS
 2. ALL ANGULAR BENDS 90 DEGREES
 3. REMOVE ALL BURRS AND SHARP EDGES
 4. MOUNT INSERTS AFTER FINISHING

METAL STAMP TMC PART NO, 1/8 HIGH GOTHIC W/LATEST REV. LETTER,

Ø	ORIGINAL RELEASE FOR PRODUCTION	8-31-64	Ø	LL			2	1	NT129-632-4	NUT, ROUND, SWAGE TYPE	B	
X ₁	"LOCATING BASE LINES" ADDED	8-28-64	X ₁	hb			REQ. ITEM	PART NO.	M, GELLMAN DESCRIPTION	SYMBOL		
X	EXPERIMENTAL RELEASE	8-21-64	X	SRG			,081 THICK		THE TECHNICAL MATERIEL CORP. MAMARONECK. NEW YORK			
							ALUMINUM		HOLDER, PC BOARD			
SYM	DESCRIPTION	DATE	CH. NO.	DRAFTS	CHECKER	ENG. APP.	MATERIAL					
UNLESS OTHERWISE SPECIFIED DIMENSIONS ARE IN INCHES AND INCLUDE CHEMICALLY APPLIED OR PLATED FINISHES		SCALE					5052-H32		SRG [Signature] @ RAL			
DECIMALS .X ± .05 .XX ± .01 .XXX ± .005		FRACTIONS ± 1/64 ANGLES ± 0° 30'		TOLERANCES		CODE	S404 YELLOW IRIDITE		TYPE & TEMPER		HEAT TREAT. SPEC.	
						A	FINISH & SPEC. NO.		DRAWN		CHECKED	
									ELEC. DES. APP.		MECH. DES. APP.	
											MS3992 Ø	