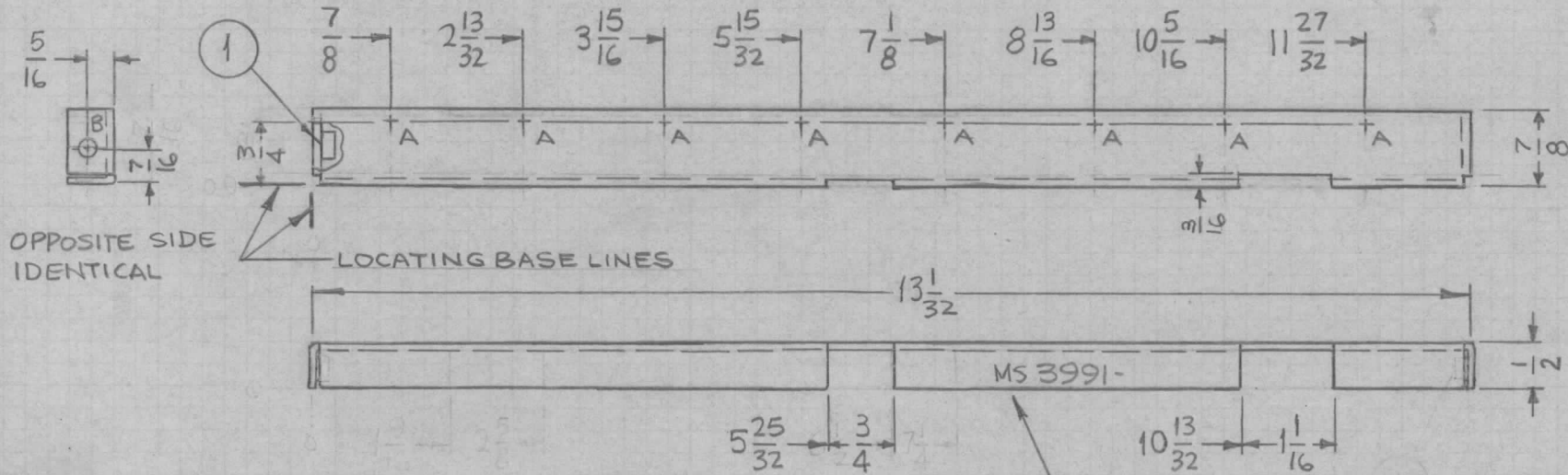


HOLE	DESCRIPTION	REQ
A	9/64 DIA.	8
B	.191-.194 DIA.	2

REQ. PER UNIT	USED ON		
	MODEL	ASS'Y. NO.	DATE
1	LFCA-1		8-21-64

MS3991 Ø



METAL STAMP TMC PART NO. 1/8 HIGH GOTHIC W/LATEST REV. LETTER.

UNLESS OTHERWISE SPECIFIED:

1. USE MATERIAL THICKNESS FOR MAXIMUM RADIUS ON ALL BENDS
2. ALL ANGULAR BENDS 90 DEGREES
3. REMOVE ALL BURRS AND SHARP EDGES
4. MOUNT INSERTS AFTER FINISHING

SYM	DESCRIPTION	DATE	CH. NO.	DRAFTS	CHECKER	ENG. APP.	REQ. ITEM	PART NO.	M. GELLMAN DESCRIPTION	SYMBOL		
Ø	ORIGINAL RELEASE FOR PRODUCTION	8.31.64	Ø	ll.			2	1	NT129-632-4	NUT, ROUND, SWAGE TYPE	B	
X ₁	"LOCATING BASE LINES" ADDED	8.28.64	X ₁	llB					.081 THICK	THE TECHNICAL MATERIEL CORP. MAMARONECK, NEW YORK		
X	EXPERIMENTAL RELEASE	8-21-64	X	SRG					STOCK SIZE			
									ALUMINUM	HOLDER, PC BOARD		
UNLESS OTHERWISE SPECIFIED DIMENSIONS ARE IN INCHES AND INCLUDE CHEMICALLY APPLIED OR PLATED FINISHES							SCALE					
							1/2:1					
DECIMALS .X ± .05 .XX ± .01 .XXX ± .005							FRACTIONS ± 1/64 ANGLES ± 0° 30'					
TOLERANCES							CODE					
							A					
							5052-H32					
							S404 YEL IRIDITE					
							FINISH & SPEC. NO.					
							ELEC. DES. APP.					
							MECH. DES. APP.					
							DRAWN		CHECKED		FINAL APPROVAL	
							SRG		llB @ llB		MS3991 Ø	