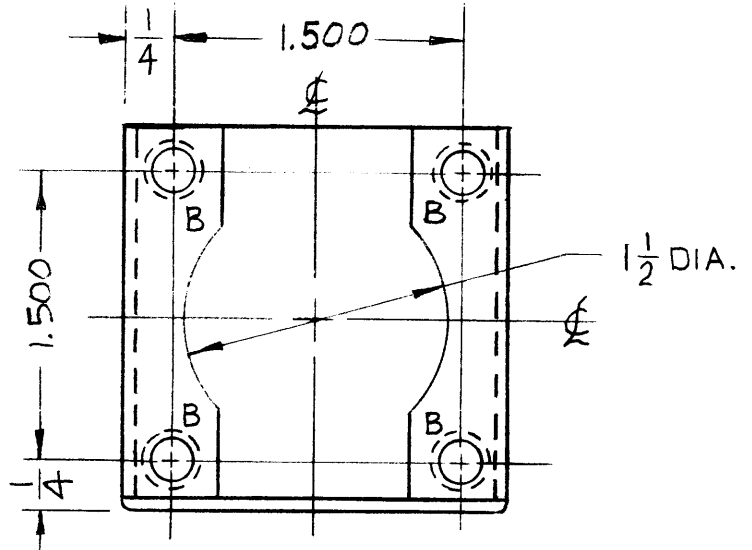
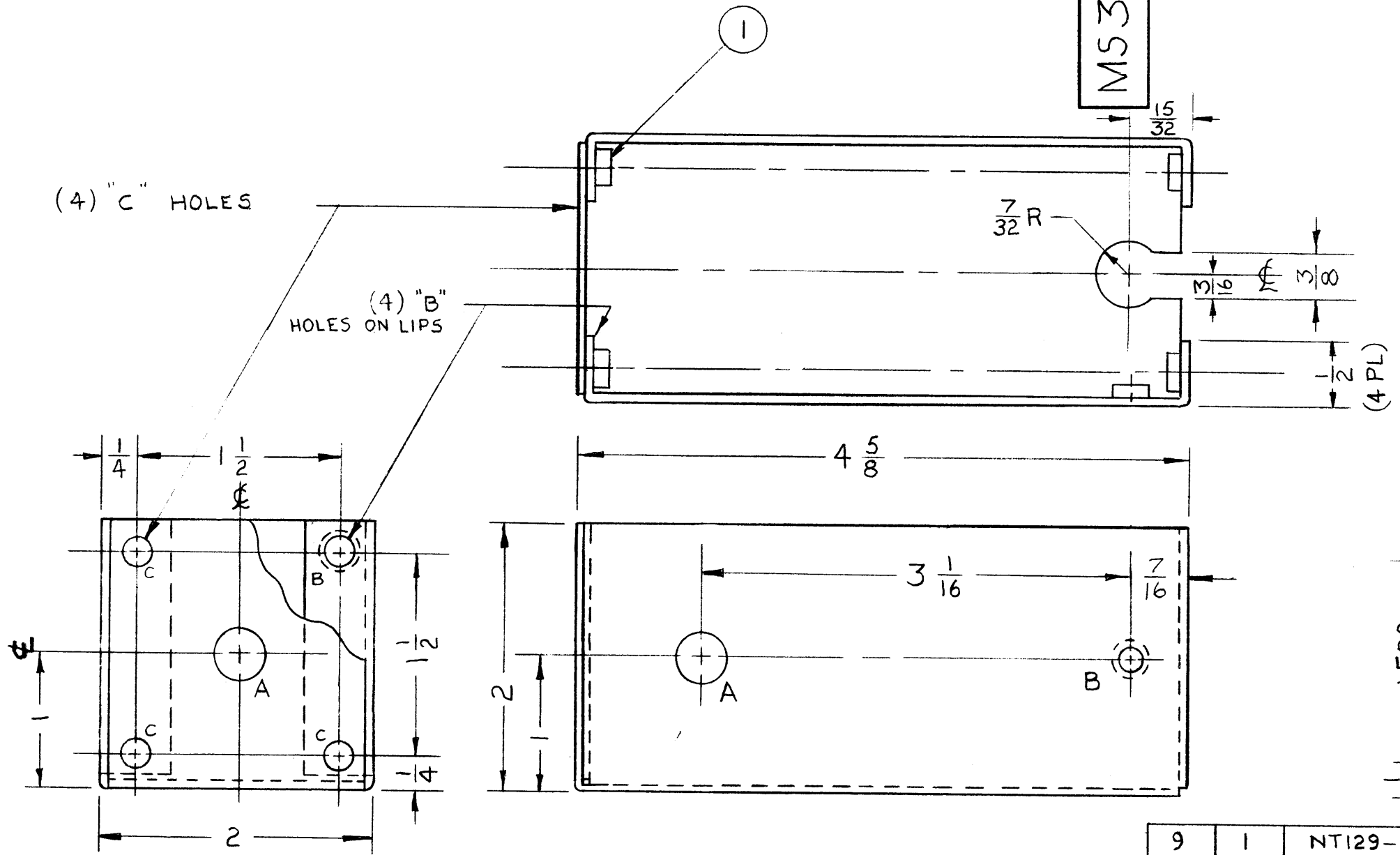


MS3978

REVISIONS					
SYM	DESCRIPTION	DATE	E.M.N. NO.	DRAFT	CHKD APPD
X ₁	3 1/2 WAS 3 5/8, 1.500 WAS 1 1/2 ADDED 1 1/2 DIA. CUTOUT ADDED (1) B HOLE	9/8/64		<i>J. Luvara</i>	<i>J. Munford</i> 9/9/64
Ø	ORIGINAL RELEASE FOR PRODUCTION	9-25-64	Ø	<i>J.L.</i>	<i>J. Munford</i>

LEGEND		
HOLE	DESCRIPTION	REQ
A	3/8 DIA.	2
B	.194-.191 DIA	9
C	3/16 DIA	4



- UNLESS OTHERWISE SPECIFIED:
1. USE MATERIAL THICKNESS FOR MAXIMUM RADIUS ON ALL BENDS
 2. ALL ANGULAR BENDS 90 DEGREES
 3. REMOVE ALL BURRS AND SHARP EDGES
 4. MOUNT INSERTS AFTER FINISHING

9	1	NT129-632-4	NUT, PLAIN SPLINE	B
REQ'D.	ITEM	PART NUMBER	DESCRIPTION	SYMBOL

EATON		LIST OF MATERIAL	
MATERIAL .064 ALUMINUM 5052 H32		THE TECHNICAL MATERIEL CORP. MAMARONECK, NEW YORK	
FINISH S404 YELLOW IRIDITE		TITLE BRACKET, MOUNTING RF GAIN LEDEX	

1	HFIR-1	
TY./UNIT	MODEL USED ON	ASSY. NO.
SCALE	CODE A	

UNLESS OTHERWISE SPECIFIED DIMENSIONS ARE IN INCHES AND INCLUDE CHEMICALLY APPLIED OR PLATED FINISHES		DRAWN <i>J. LUVARA</i> DATE 9-8-64		FINAL APPROVAL <i>J.L.</i> DATE	
DECIMALS .X ± .05 .XX ± .01 .XXX ± .005		TOLERANCES		MECH. DES. <i>B. BARNES</i> DATE 9/25/64	
FRACTI NS ± 1/64 ANGLES ± 0° 30'		DATE 9/25/64		MS3978	
				SHEET	
				REV. LTR.	

NOTES

THE CONTENTS OF THIS DRAWING ARE THE EXCLUSIVE PROPERTY OF THE TECHNICAL MATERIEL CORP. ITS UNAUTHORIZED USE OR REPRODUCTION IN WHOLE OR IN PART IS STRICTLY FORBIDDEN.