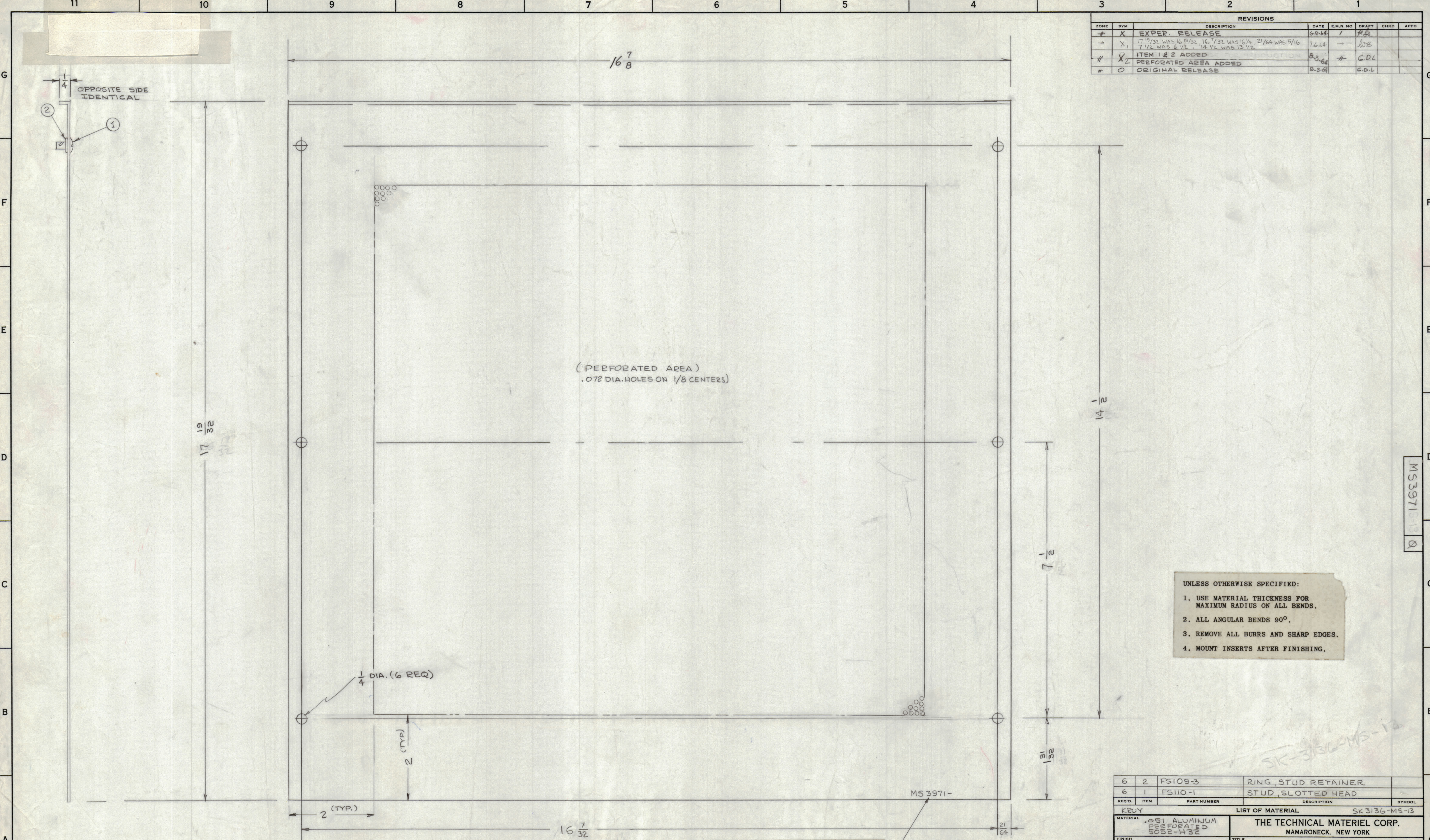


REVISIONS						
ZONE	SYM	DESCRIPTION	DATE	E.M.N. NO.	DRAFT	CHKD
#	X	EXPER. RELEASE	6-2-64	1	WJS	
#	X1	17 19/32 WAS 16 19/32, 16 7/32 WAS 16 1/4, 21 1/4 WAS 5/16 7 1/2 WAS 6 1/2, 14 1/2 WAS 13 1/2	7-6-64			
#	X2	ITEM 1 & 2 ADDED	8-3-64		G.D.L.	
#	0	PERFORATED AREA ADDED	8-3-64		G.D.L.	
#	0	ORIGINAL RELEASE	8-3-64		G.D.L.	



UNLESS OTHERWISE SPECIFIED:

1. USE MATERIAL THICKNESS FOR MAXIMUM RADIUS ON ALL BENDS.
2. ALL ANGULAR BENDS 90°.
3. REMOVE ALL BURRS AND SHARP EDGES.
4. MOUNT INSERTS AFTER FINISHING.

6	2	FS109-3	RING STUD RETAINER
6	1	FS110-1	STUD, SLOTTED HEAD
REQ'D.	ITEM	PART NUMBER	DESCRIPTION
KEY			LIST OF MATERIAL SK3136-MS-13
MATERIAL		.051 ALUMINUM PERFORATED 5052-H32	
FINISH		S404-YELLOW IRIDITE	
THE TECHNICAL MATERIEL CORP.			MAMARONECK, NEW YORK
TITLE			COVER, TOP
QTY./UNIT	MODEL USED ON	CODE	ASSY. NO.
SCALE	CODE	A	
UNLESS OTHERWISE SPECIFIED DIMENSIONS ARE IN INCHES AND INCLUDE CHEMICALLY APPLIED OR PLATED FINISHES		DECIMALS	FRACTIONS
		.XX ± .01	± 1/64
		.XXX ± .005	± 0° 30'
ELECT. DES.	DATE	MECH. DES.	DATE
REV. LTR.			0

METAL STAMP TMC PART NO. 1/8 HIGH GOTHIC, W/LATEST REVISION LETTER

NOTES

THE CONTENTS OF THIS DRAWING ARE THE EXCLUSIVE PROPERTY OF THE TECHNICAL MATERIEL CORP. ITS UNAUTHORIZED USE OR REPRODUCTION IN WHOLE OR IN PART IS STRICTLY FORBIDDEN.