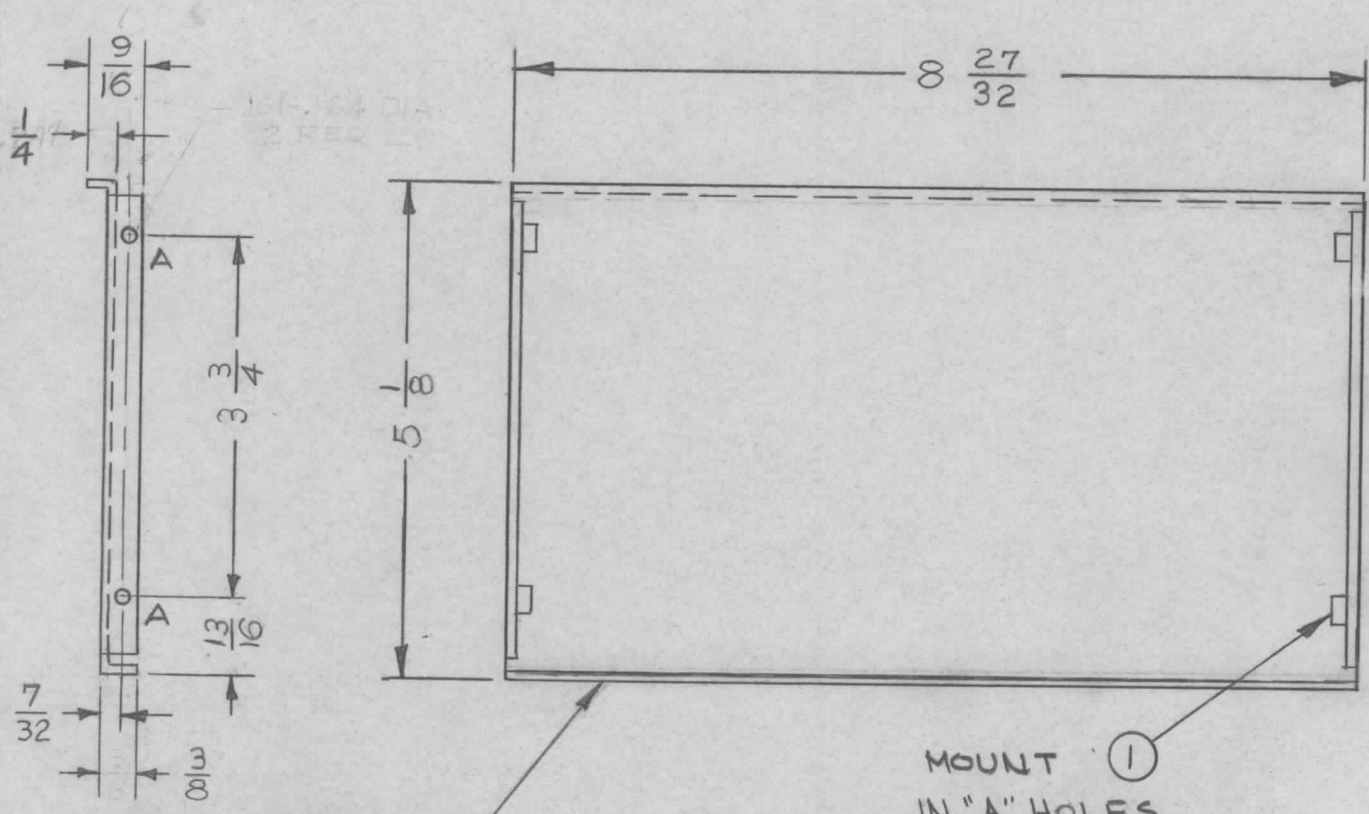


REQ. PER UNIT	USED ON			MS3969	Ø
	MODEL	ASS'Y. NO.	DATE		
4	VLRB-1		6-12-64		



HOLE LEGEND		
HOLE	DIAMETER	REQ
A	.161-.164	4

- UNLESS OTHERWISE SPECIFIED:
1. USE MATERIAL THICKNESS FOR MAXIMUM RADIUS ON ALL BENDS.
 2. ALL ANGULAR BENDS 90°.
 3. REMOVE ALL BURRS AND SHARP EDGES.

MOUNT ① IN "A" HOLES
 METAL STAMP TMC PART NO. 1/8 HIGH GOTHIC, W/LATEST REV. LETTER.

4	1	NT129-440-4	NUT, ROUND, SWAGE TYPE		A
REQ. ITEM	PART NO.		GELMAN	DESCRIPTION SK3136-MS-11	SYMBOL
.060 THK			THE TECHNICAL MATERIEL CORP.		
STOCK SIZE			MAMARONECK, NEW YORK		
ALUMINUM			SHIELD, SEPARATOR		
MATERIAL					
5052-H32		—H—	a. Marino	@	R
TYPE & TEMPER	HEAT TREAT. SPEC.	DRAWN	CHECKED	FINAL APPROVAL	
S404 YEL. IRIDITE				MS3969 Ø	
FINISH & SPEC. NO.		ELEC. DES. APP.	MECH. DES. APP.		

Ø	ORIGINAL RELEASE FOR PRODUCTION	8.3.64	*	WB		
X	EXPERIMENTAL RELEASE	6/12/64	X	A.M.		
SYM	DESCRIPTION	DATE	CH. NO.	DRAFTS	CHECKER	ENG. APP.
UNLESS OTHERWISE SPECIFIED DIMENSIONS ARE IN INCHES AND INCLUDE CHEMICALLY APPLIED OR PLATED FINISHES		SCALE 1:2				
DECIMALS .X ± .05 .XX ± .01 .XXX ± .005	TOLERANCES	FRACTIONS ± 1/64 ANGLES ± 0° 30'	CODE A			