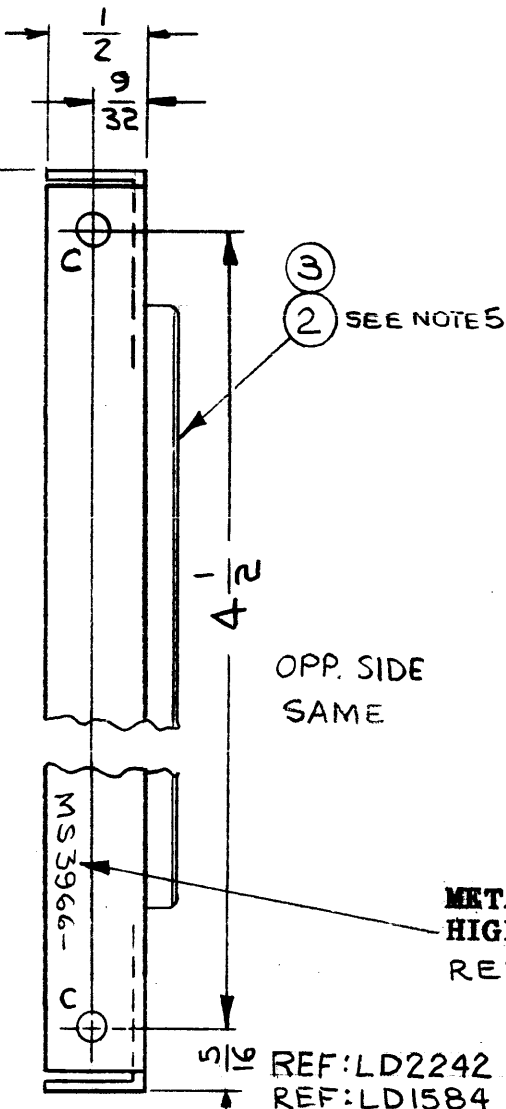
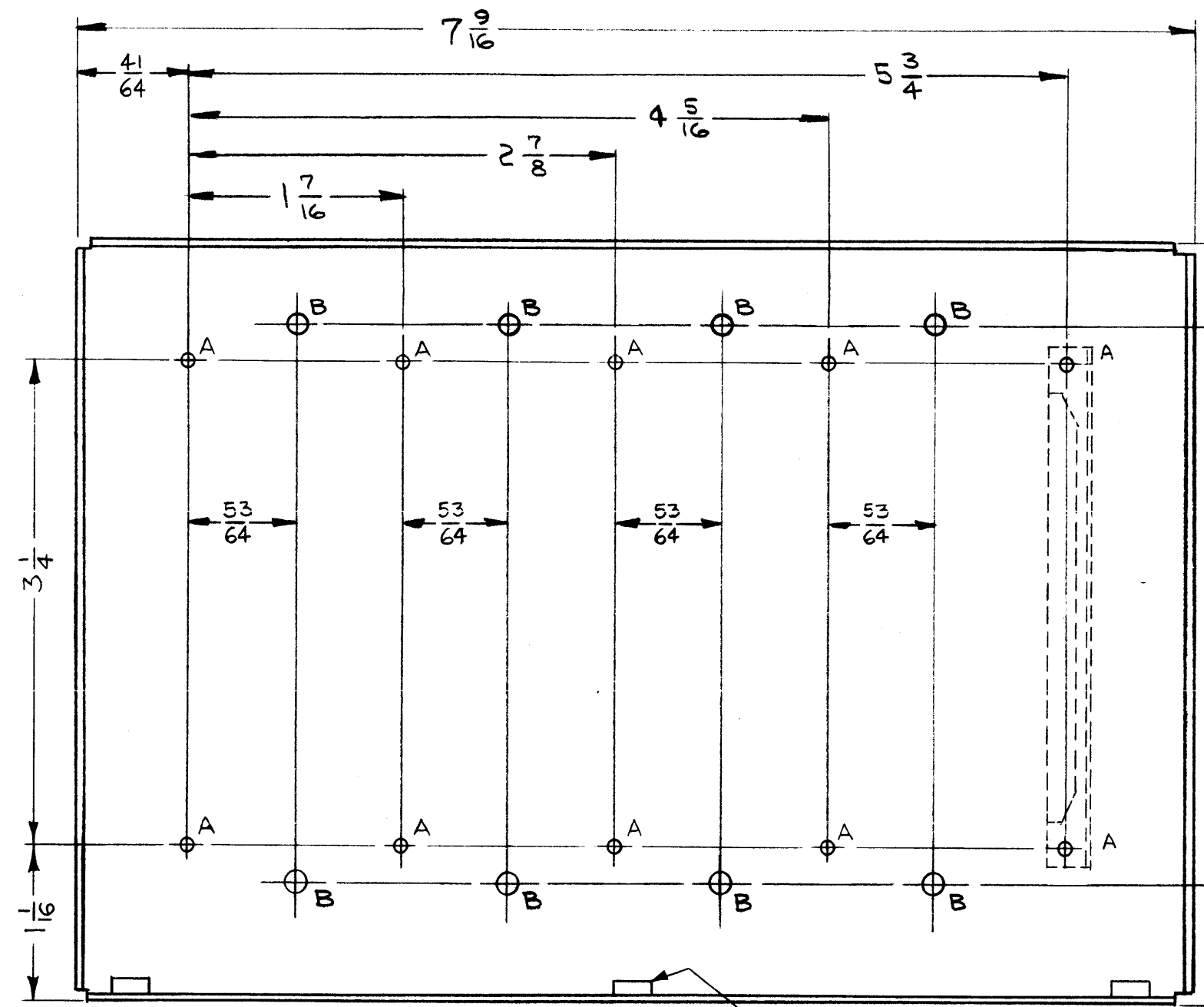


MS3966 A

REVISIONS					
SYM	DESCRIPTION	DATE	E.M.N. NO.	DRAFT	CHKD APPD
X	EXPER. RELEASE	6-17-64	1		
X1	ON BOTTOM VIEW DIM. 9/32 WAS 1/4	7-2-64		C.D.L.	
X2	ON FRONT VIEW DIM 41/64 WAS 3/4, DIMS 53/64 WERE 23/32 "A" HOLES WERE 3 3/4 APART.	7.15.64		WB	
Ø	ORIGINAL RELEASE FOR PRODUCTION	8.3.64	+	WB	
A	REF: LD2242 VLRC-1 & VLRB-1 ADDED	11-20-67	C.C.	HB	al m



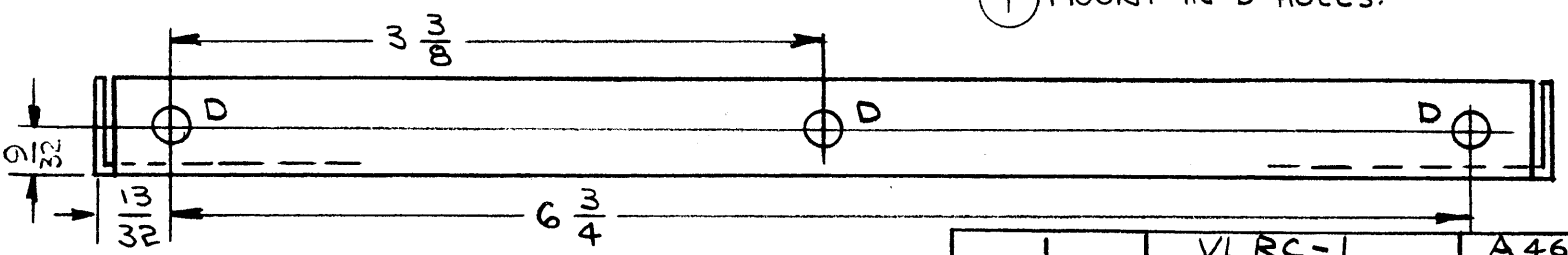
HOLE	DESCRIPTION	REQ.
A	.098 DIA.	10
B	1/8 DIA.	8
C	5/32 DIA.	4
D	.161-.164 DIA.	3

- UNLESS OTHERWISE SPECIFIED:**
1. USE MATERIAL THICKNESS FOR MAXIMUM RADIUS ON ALL BENDS.
 2. ALL ANGULAR BENDS 90°.
 3. REMOVE ALL BURRS AND SHARP EDGES.
 4. MOUNT INSERTS AFTER FINISHING, IN ALL "D" HOLES.
 5. AFTER FINISH MOUNT ALL CUI57-1 WITH EY101-3 IN "A" HOLES

METAL STAMP TMC PART NO. 1/8 HIGH GOTHIC, WITH LATEST REVISION LETTER.

REF: LD2242 VLRC-1
REF: LD1584 VLRB-1

1 MOUNT IN "D" HOLES.



REQ'D.	ITEM	PART NUMBER	DESCRIPTION	SYMBOL
10	3	EY101-3	EYELET, ROLLED FLANGE	A
5	2	CUI57-1	RETAINER, P.C. BOARD	A
3	1	NT129-440-4	NUT, ROUND, SWAGE TYPE	D

GELLMAN LIST OF MATERIAL SK3136-MS-8

MATERIAL .062 ALUMINUM 5052-H32
FINISH S404 YELLOW IRIDITE
TITLE THE TECHNICAL MATERIEL CORP. MAMARONECK, NEW YORK

BRACE, FRONT

UNLESS OTHERWISE SPECIFIED DIMENSIONS ARE IN INCHES AND INCLUDE CHEMICALLY APPLIED OR PLATED FINISHES		DRAWN 6-17-64	DATE	FINAL APPROVAL	DATE
DECIMALS .X ± .05 .XX ± .01 .XXX ± .005		CHECKED	DATE	MS3966	A
FRACTIONS ± 1/64 ANGLES ± 0° 30'		ELECT. DES.	DATE		
TOLERANCES		MECH. DES.	DATE	SHEET	REV. LTR.

NOTES

THE CONTENTS OF THIS DRAWING ARE THE EXCLUSIVE PROPERTY OF THE TECHNICAL MATERIEL CORP. ITS UNAUTHORIZED USE OR REPRODUCTION IN WHOLE OR IN PART IS STRICTLY FORBIDDEN.