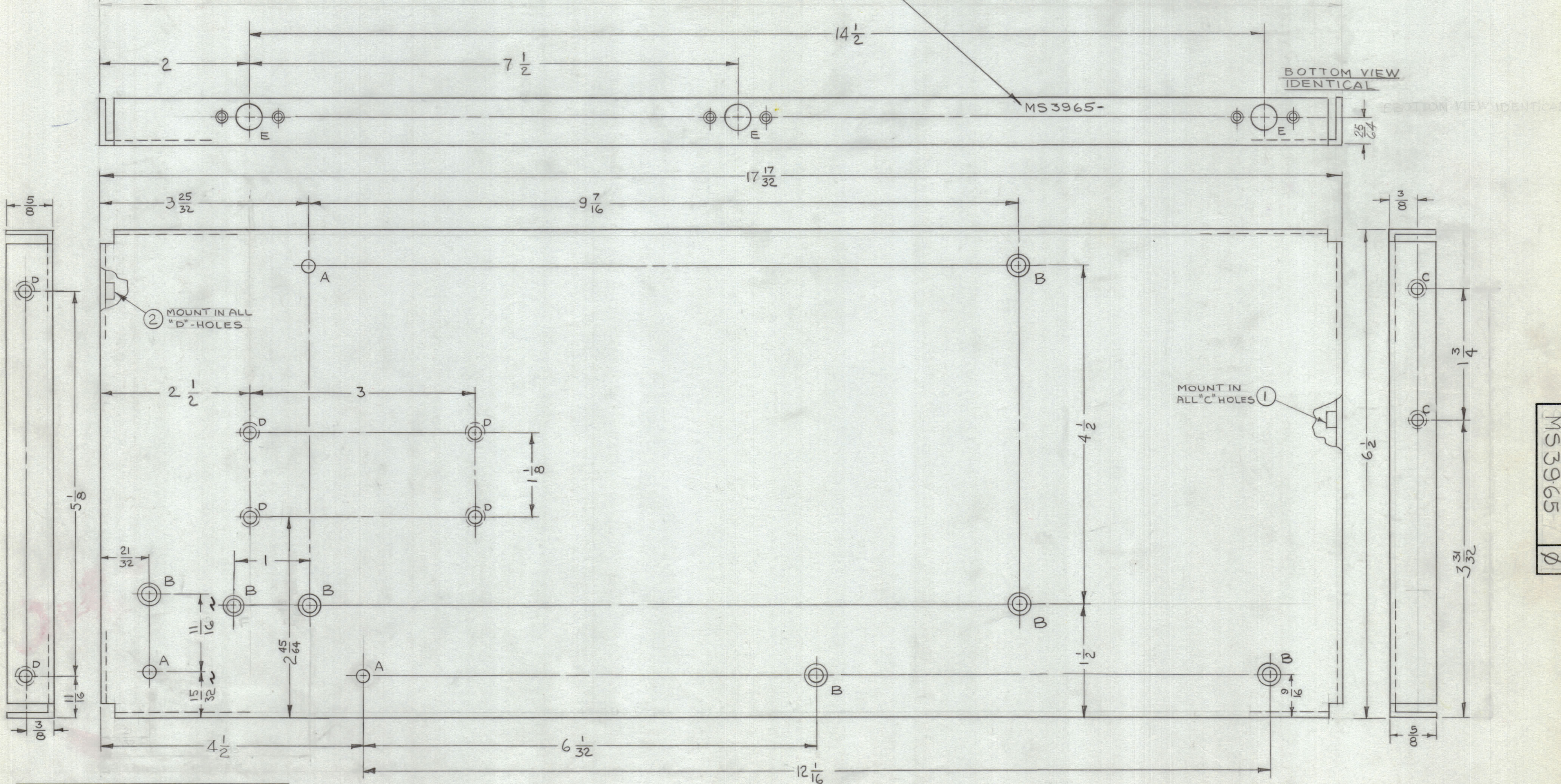


UNLESS OTHERWISE SPECIFIED:

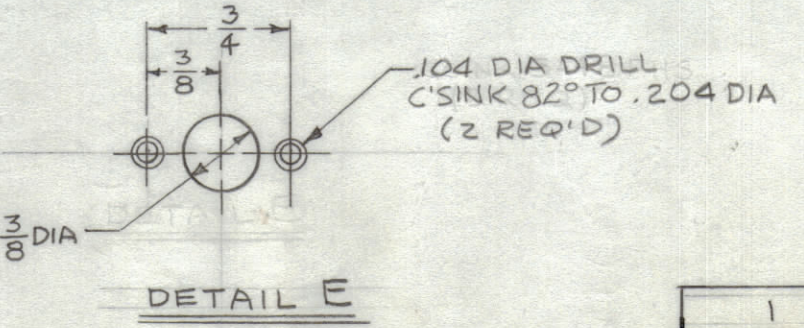
1. USE MATERIAL THICKNESS FOR MAXIMUM RADIUS ON ALL BENDS.
2. ALL ANGULAR BENDS 90°.
3. REMOVE ALL BURRS AND SHARP EDGES.
4. MOUNT INSERTS AFTER FINISHING.

REVISIONS						
ZONE	SYM	DESCRIPTION	DATE	E.M.N. NO.	DRAFT	CHKD APPD
X		EXPERIMENTAL RELEASE	6.16.64	1	WJB	
C7	X1	DIMS, 15/32 WAS 5/8; 11/16 WAS 1 1/16	6.20.64	2	WJB	
H	X2	DIM. 17 17/32 WAS 16 17/32 ON SIDE VIEW "D" REDIMENSIONED "A" & "E" HOLES REDIMENSIONED	7-1-64	3	G.D.L.	
Ø		ORIGINAL RELEASE FOR PRODUCTION	8.3.64	+	WJB	

METAL STAMP TMC PART NO. 1/8 HIGH GOTHIC,
WITH LATEST REVISION LETTER.



HOLE	DESCRIPTION	REQ
A	5/32 DIA	3
B	.144 DIA CSINK 82° X .284 DIA	7
C	.191-.194 DIA	2
D	.250-.253 DIA	6
E	SEE DETAIL	6
F		



REQ'D.	ITEM	PART NUMBER	DESCRIPTION	SYMBOL
6	2	NT129-1032-4	NUT, ROUND, SWAGE TYPE	D
2	1	NT129-632-4	NUT, ROUND, SWAGE TYPE	C

GELLMAN		LIST OF MATERIAL		SK3136-MS-7
MATERIAL		THE TECHNICAL MATERIEL CORP.		
.081 ALUMINUM		MAMARONECK, NEW YORK		
5052 H-32		TITLE		
FINISH		S404		
YELLOW IRIDITE		PLATE, SIDE - RIGHT		

UNLESS OTHERWISE SPECIFIED			
DIMENSIONS ARE IN INCHES AND INCLUDE CHEMICALLY APPLIED OR PLATED FINISHES			
DECIMALS	TOLERANCES		FRACTIONS
.X ± .05	± 1/64		ANGLES
.XX ± .01	± 0° 30'		
.XXX ± .005			

Q'TY./UNIT	MODEL USED ON	ASS'Y. NO.
SCALE	CODE	
1:1	A	

DRAWN	DATE	FINAL APPROVAL	DATE
WJB	6.16.64	WJB	
CHECKED	DATE		
@	8-3-64		
ELECT. DES	DATE		
MECH. DES	DATE		
	7-3-64		

1 VLRB-1
THE CONTENTS OF THIS DRAWING ARE THE EXCLUSIVE PROPERTY OF THE TECHNICAL MATERIEL CORP. ITS UNAUTHORIZED USE OR REPRODUCTION IN WHOLE OR IN PART IS STRICTLY FORBIDDEN.

NOTES

MS3965
Ø