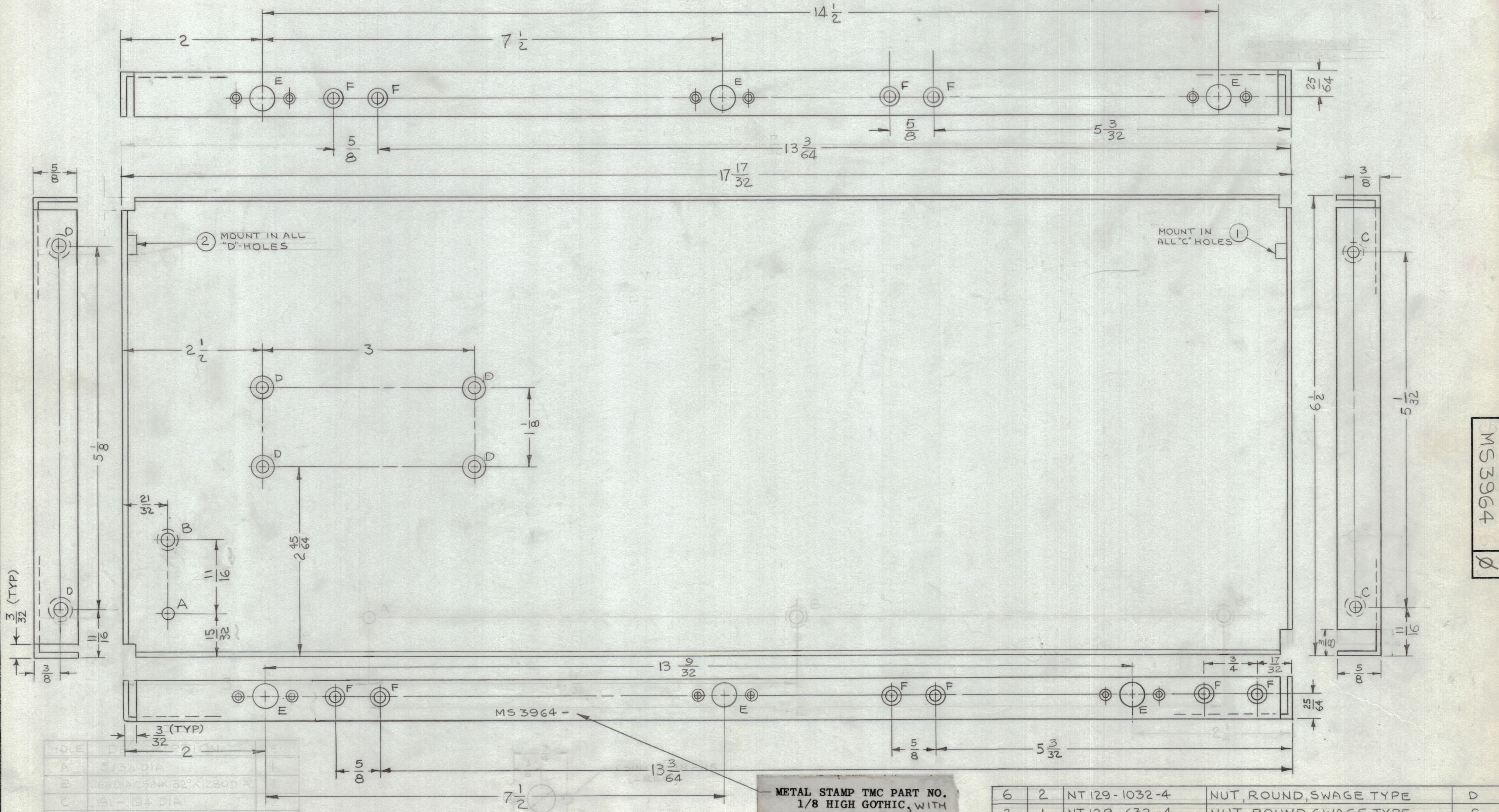


UNLESS OTHERWISE SPECIFIED:

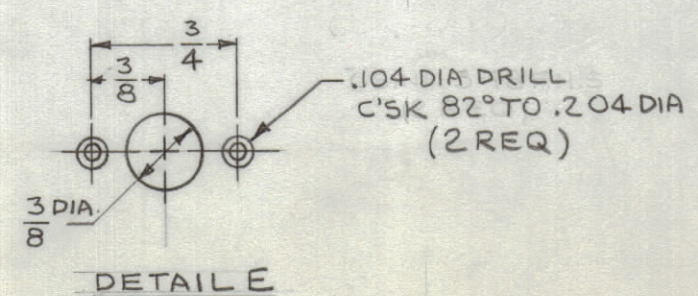
1. USE MATERIAL THICKNESS FOR MAXIMUM RADIUS ON ALL BENDS.
2. ALL ANGULAR BENDS 90°.
3. REMOVE ALL BURRS AND SHARP EDGES.
4. MOUNT INSERTS AFTER FINISHING.

REVISIONS						
ZONE	SYM	DESCRIPTION	DATE	E.M.N. NO.	DRAFT	CHKD
A	X	EXPERIMENTAL RELEASE	6.16.64	1	WB	
H	X1	(1) "A", (2) "B", (2) "E" HOLES DELETED; (6) "F" HOLES ADDED BOTTOM VIEW REDESIGNED	6-23-64	2	WB	
#	X2	DIM. 17 17/32 WAS 16 17/32 ON SIDE VIEW "D" HOLES REDIMENSIONED "E" & "F" HOLES REDIMENSIONED 4 "F" HOLES ADDED - 2 "E" HOLES ADDED	7-1-64	3	GDL	
	X3	3/32 ON CORNERS ADDED	7-21-64		NP	
	Ø	ORIGINAL RELEASE FOR PRODUCTION	8.3.64		WB	



HOLE	DIAMETER	REQUIREMENTS
A	5/32 DIA	
B	.144 DIA C'SINK 82° X .284 DIA	
C	.191 - .194 DIA	
D	.250 - .253 DIA	
E	SEE DETAIL	
F	.144 DIA C'SINK 82° X .284 DIA	

HOLE	DESCRIPTION	REQ.
A	5/32 DIA	1
B	.144 DIA C'SINK 82° X .284 DIA	1
C	.191 - .194 DIA	2
D	.250 - .253 DIA	6
E	SEE DETAIL	6
F	.144 DIA C'SINK 82° X .284 DIA	10



NOTES

Q'TY./UNIT	MODEL USED ON	ASS'Y. NO.
SCALE	CODE	
DO NOT SCALE	A	

THE CONTENTS OF THIS DRAWING ARE THE EXCLUSIVE PROPERTY OF THE TECHNICAL MATERIEL CORP. ITS UNAUTHORIZED USE OR REPRODUCTION IN WHOLE OR IN PART IS STRICTLY FORBIDDEN.

METAL STAMP TMC PART NO. 1/8 HIGH GOTHIC, WITH LATEST REV. LETTER.

REQ'D.	ITEM	PART NUMBER	DESCRIPTION	SYMBOL
6	2	NT129-1032-4	NUT, ROUND, SWAGE TYPE	D
2	1	NT129-632-4	NUT, ROUND, SWAGE TYPE	C

GELLMAN LIST OF MATERIAL SK3136-MS-6

MATERIAL: .081 ALUMINUM 5052 H-32
FINISH: S404 YELLOW IRIDITE

THE TECHNICAL MATERIEL CORP. MAMARONECK, NEW YORK
TITLE: PLATE, SIDE-LEFT

UNLESS OTHERWISE SPECIFIED DIMENSIONS ARE IN INCHES AND INCLUDE CHEMICALLY APPLIED OR PLATED FINISHES

DRAWN	DATE	FINAL APPROVAL	DATE
WB	6.16.64		
CHECKED	DATE	DATE	DATE
	8-3-64		

DECIMALS: .X ± .05, .XX ± .01, .XXX ± .005
FRACTIONS: ± 1/64 ANGLES: ± 0° 30'

ELECT. DES. DATE: MS3964
MECH. DES. DATE: 8-3-64

SHEET: 1

MS3964