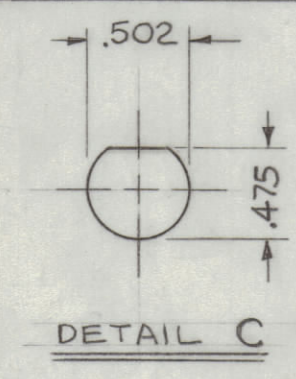


HOLE	DESCRIPTION	REQ.
A	.125 DIA	11
B	5/32 DIA	18
C	SEE DETAIL	3
D	1/2 DIA	1

REVISIONS						
ZONE	SYM	DESCRIPTION	DATE	E.M.N. NO.	DRAFT	CHKD
X		EXPERIMENTAL RELEASE	6-16-64	1		
X1		COMPLETELY REDESIGNED	6-16-64	2		
FZ		(1) 'D' HOLE, 1/2 DIA; (1) 'F' HOLE 1/8 DIA DELETED REAR APRON RE-DIMENSIONED; (1) 'C' DETAIL WAS 'D' HOLE	6-24-64	3		
X2		'B' HOLES REDIMENSIONED; DIM. 14 WAS 13 7/8"; LIP WAS 5/8 & 23/32 ON TOP VIEW ADDED	7-1-64	4	GDL	
X3		6 'A' & 1 'G' HOLES ADDED, 1 'E' HOLE DELETED; DIM. 53 3/4 WAS 5-3/4	7-9-64	5	SLB	
X4		2 'A' HOLES RELOCATED	7-15-64		SLB	
X5		DIM. FOR 'B' & 'A' HOLES REV.	7-21-64		NP	
X6		'A' HOLES WAS .125 DIA.	7-27-64		GDL	
X7		'D' HOLES ADDED - 2 1/16 WAS 2 2/32	8-3-64		NP	
		ORIGINAL RELEASE FOR PRODUCTION				

HOLE	DESCRIPTION	REQ.
A	.120 DIA C'SK 82° TO 230 D.	12
B	5/32 DIA.	15
C	SEE DETAIL	3
D	.125 DIA	11
E	5/32 DIA.	4
F	DELETED	4
G	1/2 DIA.	1
H	.144 DIA C'SK 82° TO 284 D.	3



METAL STAMP TMC PART NO. 1/8 HIGH GOTHIC,
WITH LATEST REVISION LETTER.

- UNLESS OTHERWISE SPECIFIED:
1. USE MATERIAL THICKNESS FOR MAXIMUM RADIUS ON ALL BENDS.
 2. ALL ANGULAR BENDS 90°.
 3. REMOVE ALL BURRS AND SHARP EDGES.
 4. MOUNT INSERTS AFTER FINISHING.

OPPOSITE SIDE IDENTICAL

REF: LD1585

REQ'D.	ITEM	PART NUMBER	DESCRIPTION	SYMBOL
GELLMAN LIST OF MATERIAL SK3136-MS-4				
MATERIAL	.081 ALUMINUM 5052 H32		THE TECHNICAL MATERIEL CORP. MAMARONECK, NEW YORK	
FINISH	S404 YELLOW IRIDITE		TITLE CHASSIS, MAIN	
UNLESS OTHERWISE SPECIFIED DIMENSIONS ARE IN INCHES AND INCLUDE CHEMICALLY APPLIED OR PLATED FINISHES			DRAWN	DATE
DECIMALS ±.005 FRACTIONS ± 1/64 ANGLES ± 0° 30'			DATE	DATE
THE CONTENTS OF THIS DRAWING ARE THE EXCLUSIVE PROPERTY OF THE TECHNICAL MATERIEL CORP. ITS UNAUTHORIZED USE OR REPRODUCTION IN WHOLE OR IN PART IS STRICTLY FORBIDDEN.			DATE	DATE
SCALE 1:1 CODE A			DATE	DATE
ELECT. DES.			DATE	DATE
MECH. DES.			DATE	DATE
SHEET			DATE	DATE

NOTES

MS3962