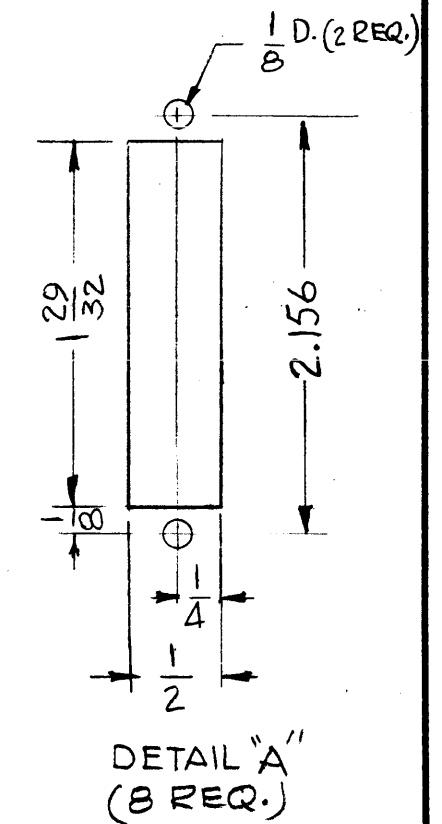
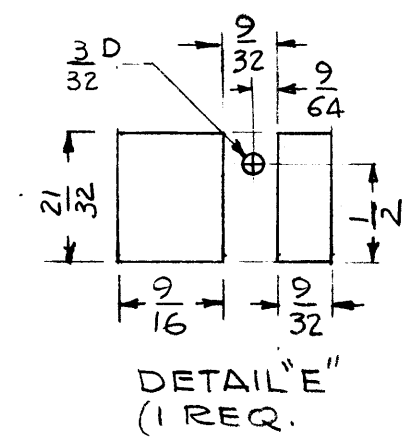
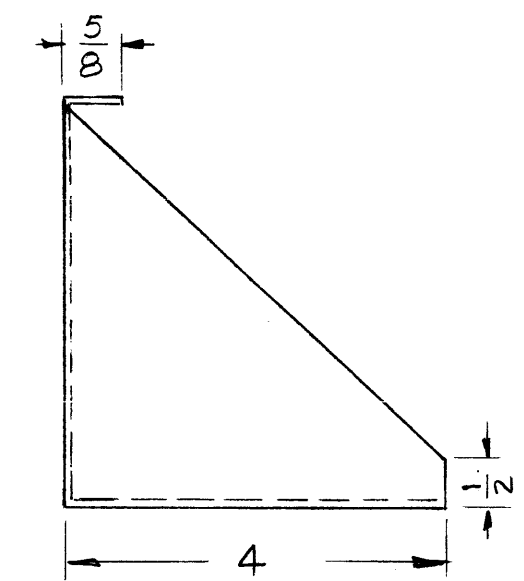
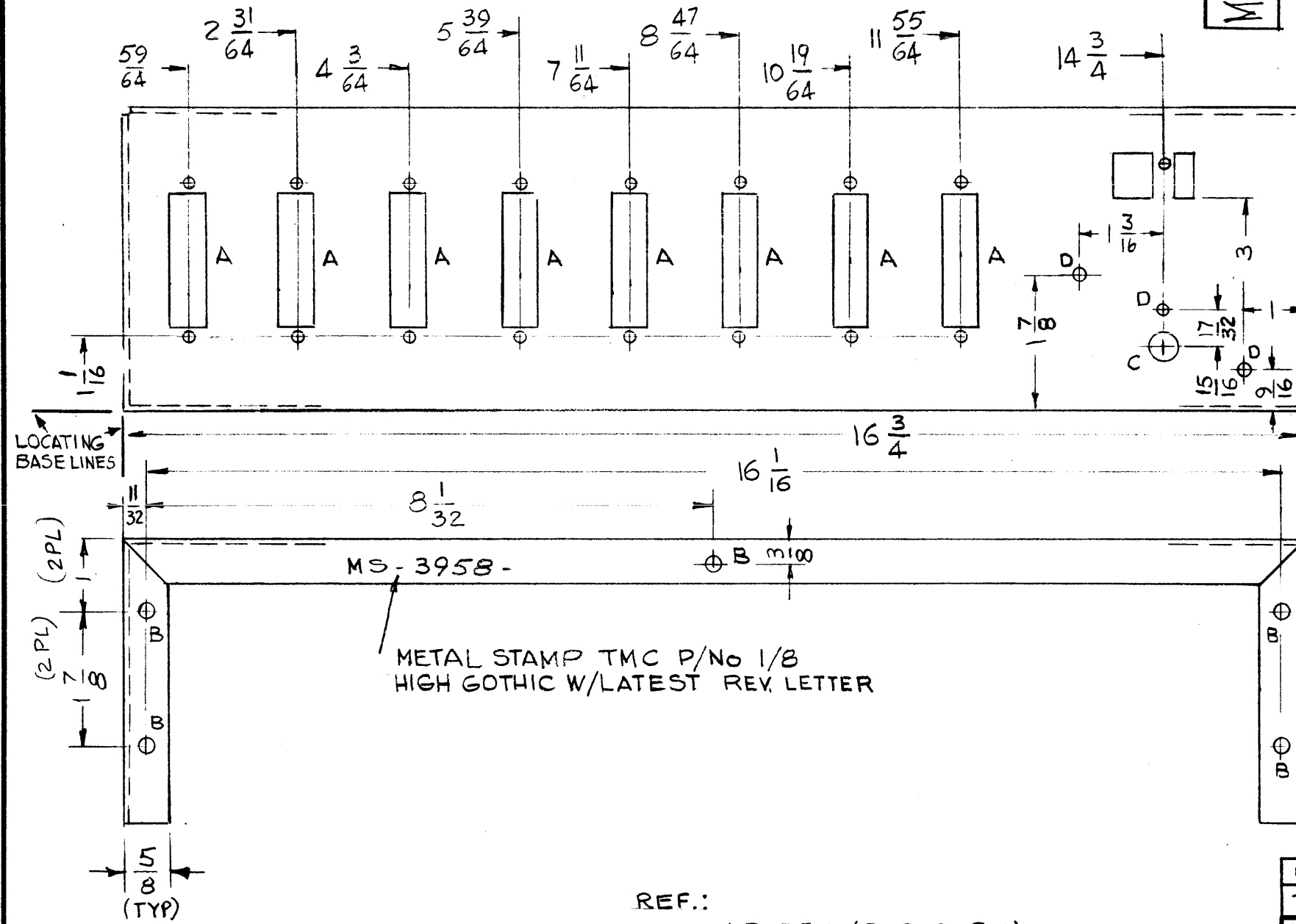


MS3958 C

REVISIONS

SYM	DESCRIPTION	DATE	E.M.N. NO.	DRAFT	CHKD	APPD
X	EXPERIMENTAL RELEASE	8-12-64	#	G.D.L.		
X1	1 "A" HOLE WAS "F" HOLE (1 29/32 X 7/16)	8-17-64	*	G.D.L.		
Ø	ORIGINAL RELEASE FOR PRODUCTION	8-27-64		G.D.L.		
A	CLERICAL CHANGE	9-30-64	-	WB	@	
B	ON PICT. "D" HOLE WAS "C" HOLE WAS "D". 2 "D" HOLES ADD.	10-20-64	12613	P.F.		
C	PICT. DIM. 2-5/32 DELE; DIM. 1-1/16 WAS 1-1/32; ON DETAIL "A": DIM. 2.156 WAS 2-5/32	1-12-65	13279	P.F.		

HOLE	DESCRIPTION	REQ
A	SEE DETAIL	8
B	11/64 DIA.	4
C	3/8 DIA.	1
D	1/8 DIA.	3
E	SEE DETAIL	1



- SCALE 1:1 -

- UNLESS OTHERWISE SPECIFIED:
- USE MATERIAL THICKNESS FOR MAXIMUM RADIUS ON ALL BENDS
 - ALL ANGULAR BENDS 90 DEGREES
 - REMOVE ALL BURRS AND SHARP EDGES
 - MOUNT INSERTS AFTER FINISHING

NOTES

REF.:
LD1580 (FOR SMR-1)
LD1588 (FOR SME-1)

QTY./UNIT	MODEL USED ON	ASSY. NO.
1	SME-1	
1	SMR-1	
SCALE	CODE	
1:2	A	

THE CONTENTS OF THIS DRAWING ARE THE EXCLUSIVE PROPERTY OF THE TECHNICAL MATERIEL CORP. ITS UNAUTHORIZED USE OR REPRODUCTION IN WHOLE OR IN PART IS STRICTLY FORBIDDEN.

REQ'D.	ITEM	PART NUMBER	DESCRIPTION	SYMBOL
T. AALTONEN LIST OF MATERIAL				
MATERIAL		.081 THK. ALUMINUM 5052-H32		
FINISH		S404 YEL. IRIDITE		
TITLE		PLATE, CONNECTORS MTG.		
DRAWN		G.D.L.	DATE	8-12-64
CHECKED			DATE	
ELECT. DES.			DATE	
MECH. DES.			DATE	
FINAL APPROVAL				DATE
MS3958				C
SHEET				REV. LTR.