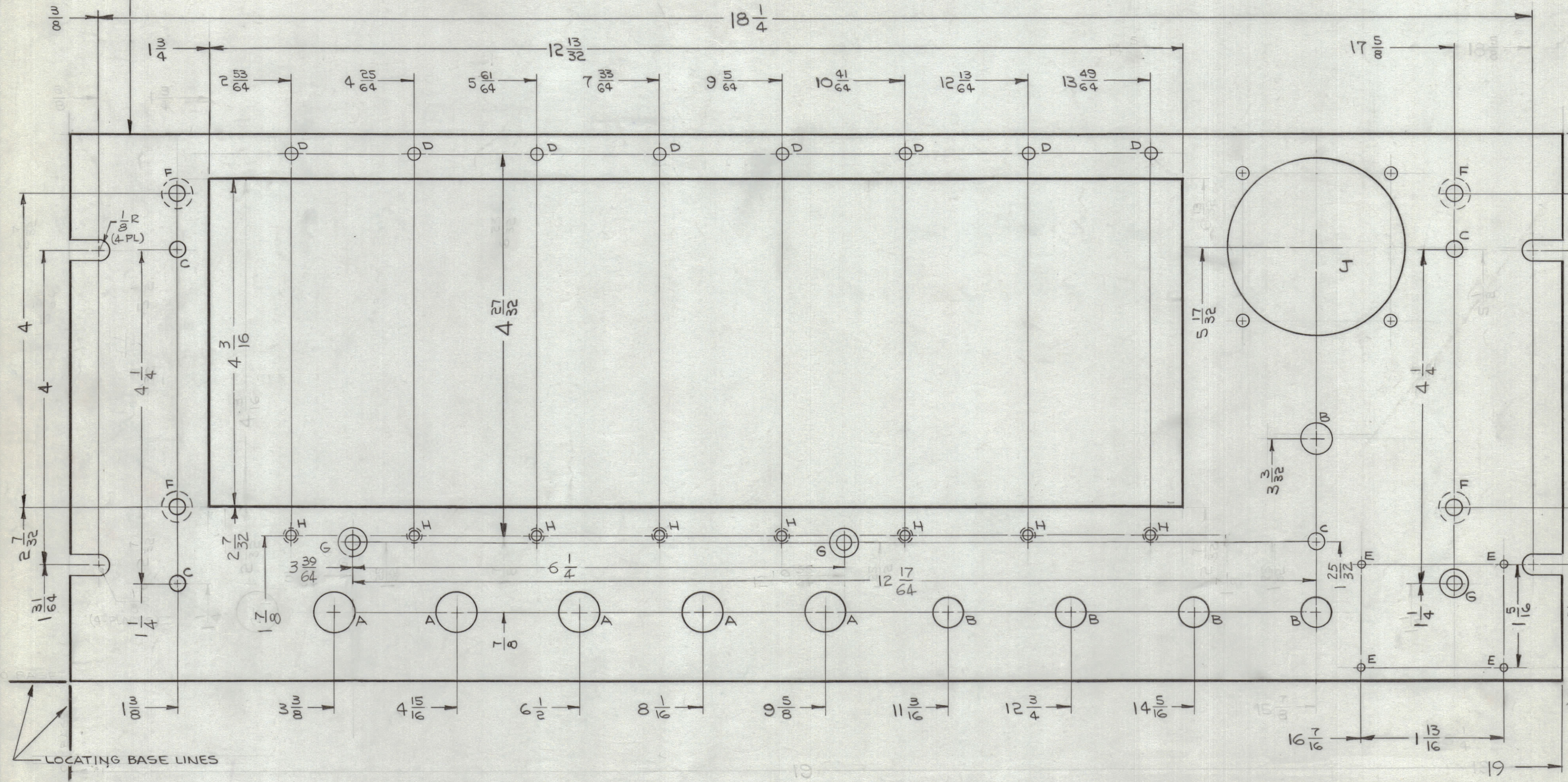
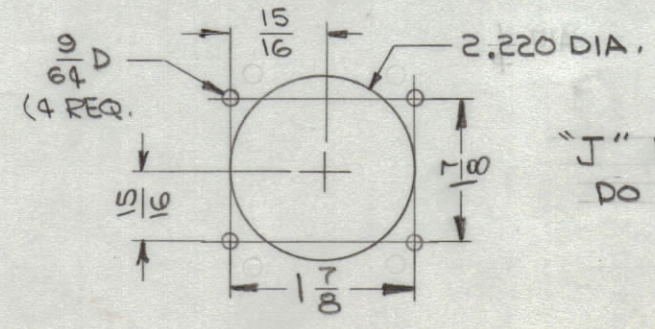


REVISIONS						
ZONE	SYM	DESCRIPTION	DATE	E.M.N. NO.	DRAFT	CHKD APPD
#	X	EXPER. RELEASE	8-4-64	X	<i>G. D. L.</i>	
#	Ø	ORIGINAL RELEASE FOR PRODUCTION	8-27-64		<i>G. D. L.</i>	
-	A	1/4" HOLE WAS .136 DIA, C'SINK B2 TO .177 DIA. ON REAR OF PAN.	9-23-64	12409	<i>WRS</i>	<i>WRS</i>
C5	B	DET. "J", 2.220 DIA HOLE WAS 2/4 DIA	2-10-65	13420	<i>WRS</i>	<i>WRS</i>

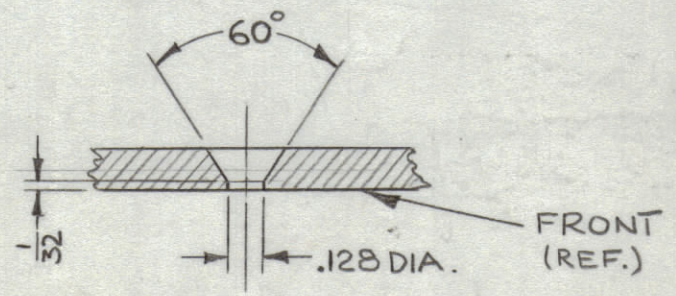
METAL STAMP TMC PART NO. 1/8  
HIGH GOTHIC ON REAR OF PANEL,  
WITH LATEST REVISION LETTER.



HOLE	DESCRIPTION	REQ.
A	1/2 DIA.	5
B	3/8 DIA.	5
C	3/16 DIA.	4
D	.136 DIA.	8
E	.070 DIA.	4
F	.196 DIA HOLE, C'SINK 82° TO .390 DIA. ON REAR OF PANEL	4
G	.169 DIA. HOLE, C'SINK 82° TO .337 DIA.	3
H	SEE DETAIL	8
J	SEE DETAIL	1



"J" DETAIL (1-REQ)  
DO NOT SCALE.



DETAIL "H"

**MACHINING:**

- MILL ALL EDGES.
- Holes must be drilled, unless otherwise specified.
- LATERAL BOW OF PANEL MUST BE KEPT TO .031 TOLERANCE.
- PANEL MUST BE FREE OF ALL MACHINING MARKS, GOUGES AND SCRATCHES. IF NECESSARY, SAND FRONT OF PANEL WITH NO. 120 GRIT SANDPAPER.

**FINISH NOTES:**

- S404 - IRIDITE 14-2 AL-COAT.
- S114 - ZINC CHROMATE PRIMER) FRONT AND
- S115 - SMOOTH GRAY ENAMEL ) EDGES ONLY

**NOTES**

- S404 - IRIDITE 14-2 AL-COAT.
- S114 - ZINC CHROMATE PRIMER) FRONT AND
- S115 - SMOOTH GRAY ENAMEL ) EDGES ONLY

QTY./UNIT	MODEL USED ON	ASS'Y. NO.
1	SMR-1	
SCALE	CODE	
1:1	A	

THE CONTENTS OF THIS DRAWING ARE THE EXCLUSIVE PROPERTY OF THE TECHNICAL MATERIEL CORP. ITS UNAUTHORIZED USE OR REPRODUCTION IN WHOLE OR IN PART IS STRICTLY FORBIDDEN.

REF: LD1578 (4) (2 SHEETS)

REQ'D.	ITEM	PART NUMBER	DESCRIPTION	SYMBOL
T. AALTONEN LIST OF MATERIAL				
MATERIAL		3/16, ALUMINUM 2024-T3		
FINISH		SEE NOTES		
UNLESS OTHERWISE SPECIFIED DIMENSIONS ARE IN INCHES AND INCLUDE CHEMICALLY APPLIED OR PLATED FINISHES		TITLE PANEL, FRONT		
DRWN	DATE	FINAL APPROVAL	DATE	
<i>G. D. L.</i>	8-4-64	<i>WRS</i>		
CHECKED	DATE			
<i>WRS</i>				
ELECT. DES.	DATE	MS3957		
<i>WRS</i>		B		
MECH. DES.	DATE	SHEET		
		REV. LTR.		

MS3957 B