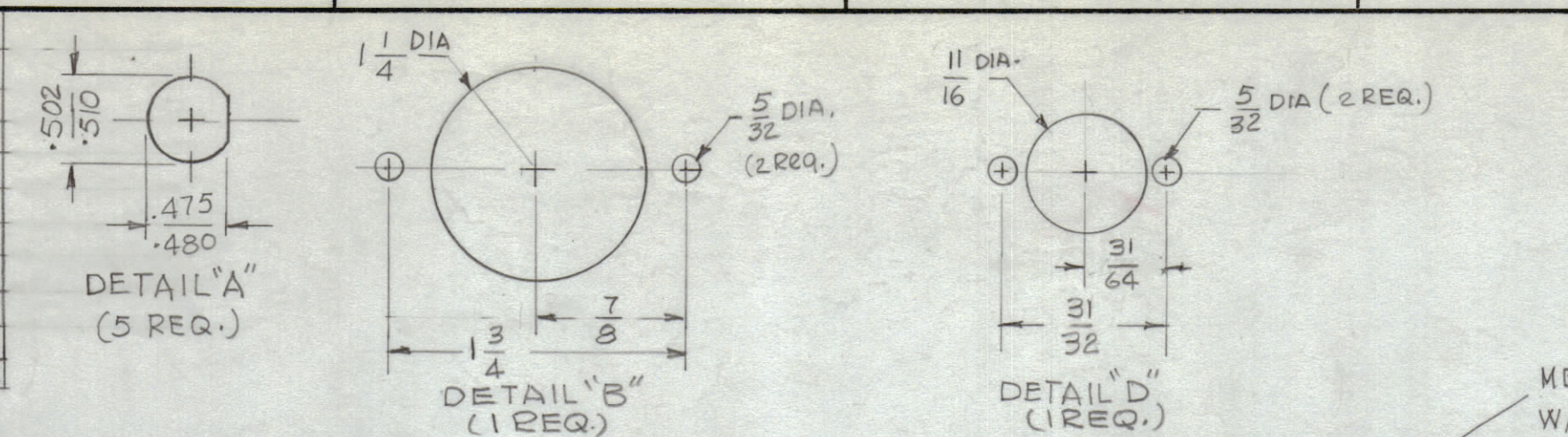
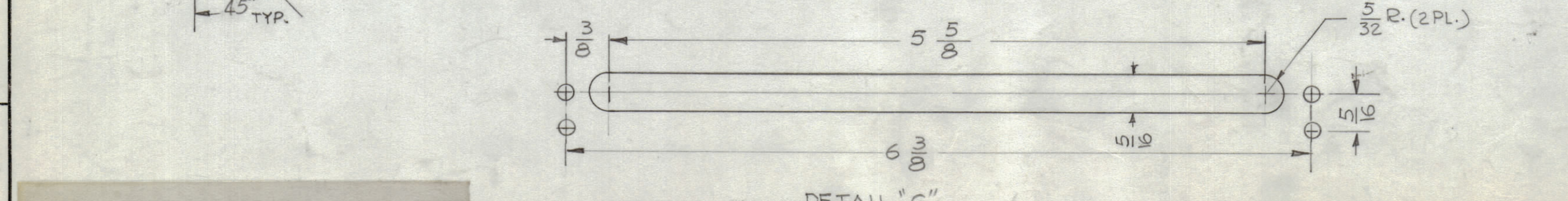
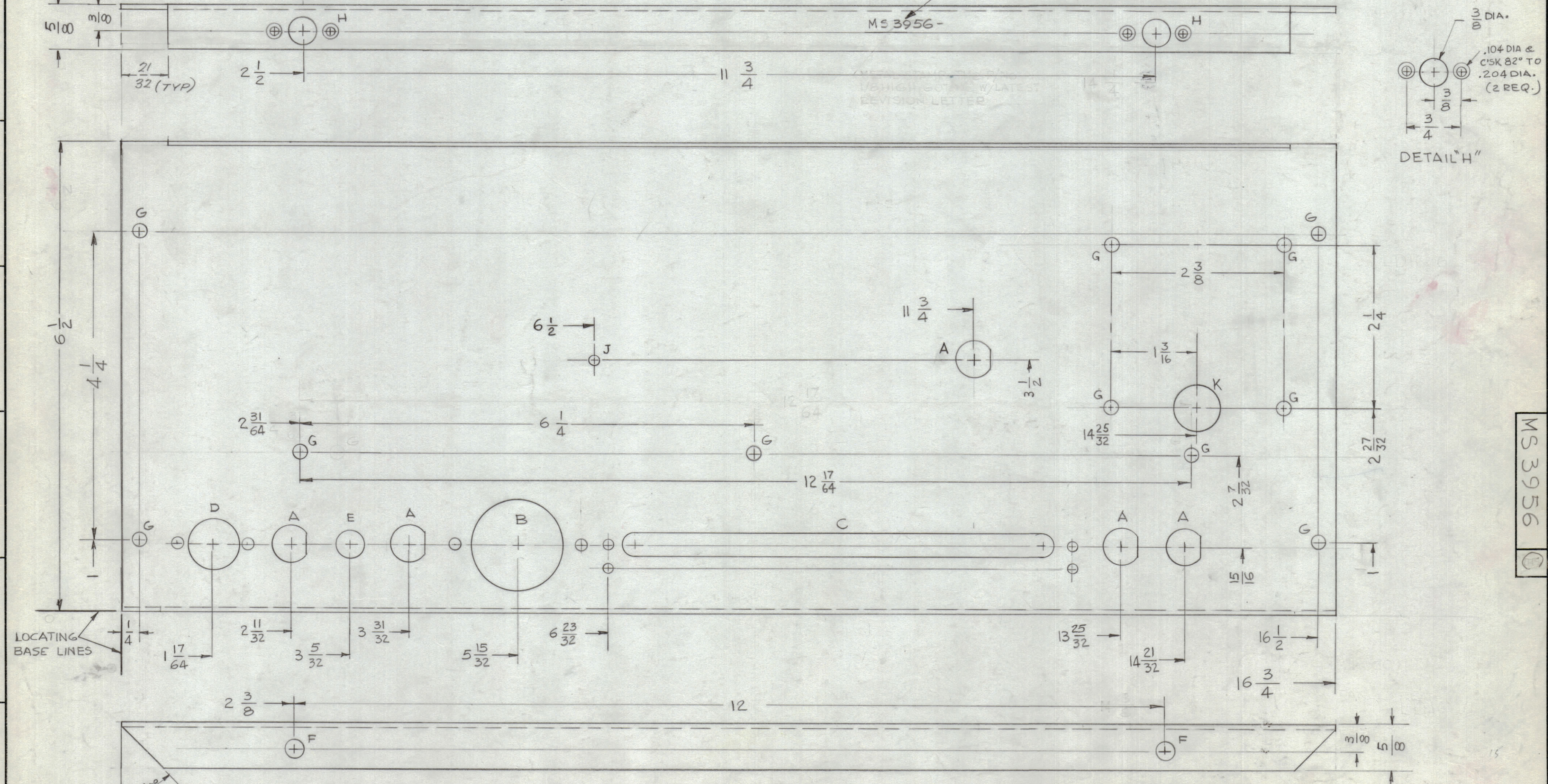


HOLE	DESCRIPTION	REQ.
A	SEE DETAIL	5
B	SEE DETAIL	1
C	SEE DETAIL	1
D	SEE DETAIL	1
E	15/32 DIA	1
F	1/4 DIA	2
G	3/16 DIA	11
H	SEE DETAIL	2
J	9/64 DIA	1
K	5/8 DIA.	1



REVISIONS							
ZONE	SYM	DESCRIPTION	DATE	E.M.N. NO.	DRAFT	CHKD	APPD
	X	EXPERIMENTAL RELEASE	8-12-64		G.D.L.		
	X1	DIMENSION 13 25/32 WAS 13 3/32	8-24-64		G.D.L.		
	Ø	ORIGINAL RELEASE FOR PRODUCTION	8-27-64		G.D.L.		
E5	A	ONE 'J'-HOLE ADDED	9-30-64	12492	JTB		
E2	B	ON PICT. 4 'G' HOLES & 1 'D' HOLE WITH DIMS. ADDED.	10-23-64	12755	JTB		
G7	C	DIM 21/32 ADDED	2-3-67	17814	WJS		



- UNLESS OTHERWISE SPECIFIED:
1. USE MATERIAL THICKNESS FOR MAXIMUM RADIUS ON ALL BENDS
 2. ALL ANGULAR BENDS 90 DEGREES
 3. REMOVE ALL BURRS AND SHARP EDGES
 4. MOUNT INSERTS AFTER FINISHING

NOTES

1	SMP-1	
Q'TY./UNIT	MODEL USED ON	ASS'Y. NO.
SCALE	CODE	
1:1	A	

THE CONTENTS OF THIS DRAWING ARE THE EXCLUSIVE PROPERTY OF THE TECHNICAL MATERIEL CORP. ITS UNAUTHORIZED USE OR REPRODUCTION IN WHOLE OR IN PART IS STRICTLY FORBIDDEN.

REF. LD1579

REQ'D.	ITEM	PART NUMBER	DESCRIPTION	SYMBOL
T. AALTONEN LIST OF MATERIAL				
MATERIAL		.064 THK ALUMINUM 5052 - H32		
FINISH		S404 YEL IRIDITE		
		THE TECHNICAL MATERIEL CORP. MAMARONECK, NEW YORK		
		TITLE PLATE, REAR		
DRAWN		G.D.L.	DATE	8-12-64
CHECKED		JTB	DATE	
ELECT. DES.			DATE	
MECH. DES.			DATE	
		SHEET		MS 3956
		REV. LTR.		

MS 3956