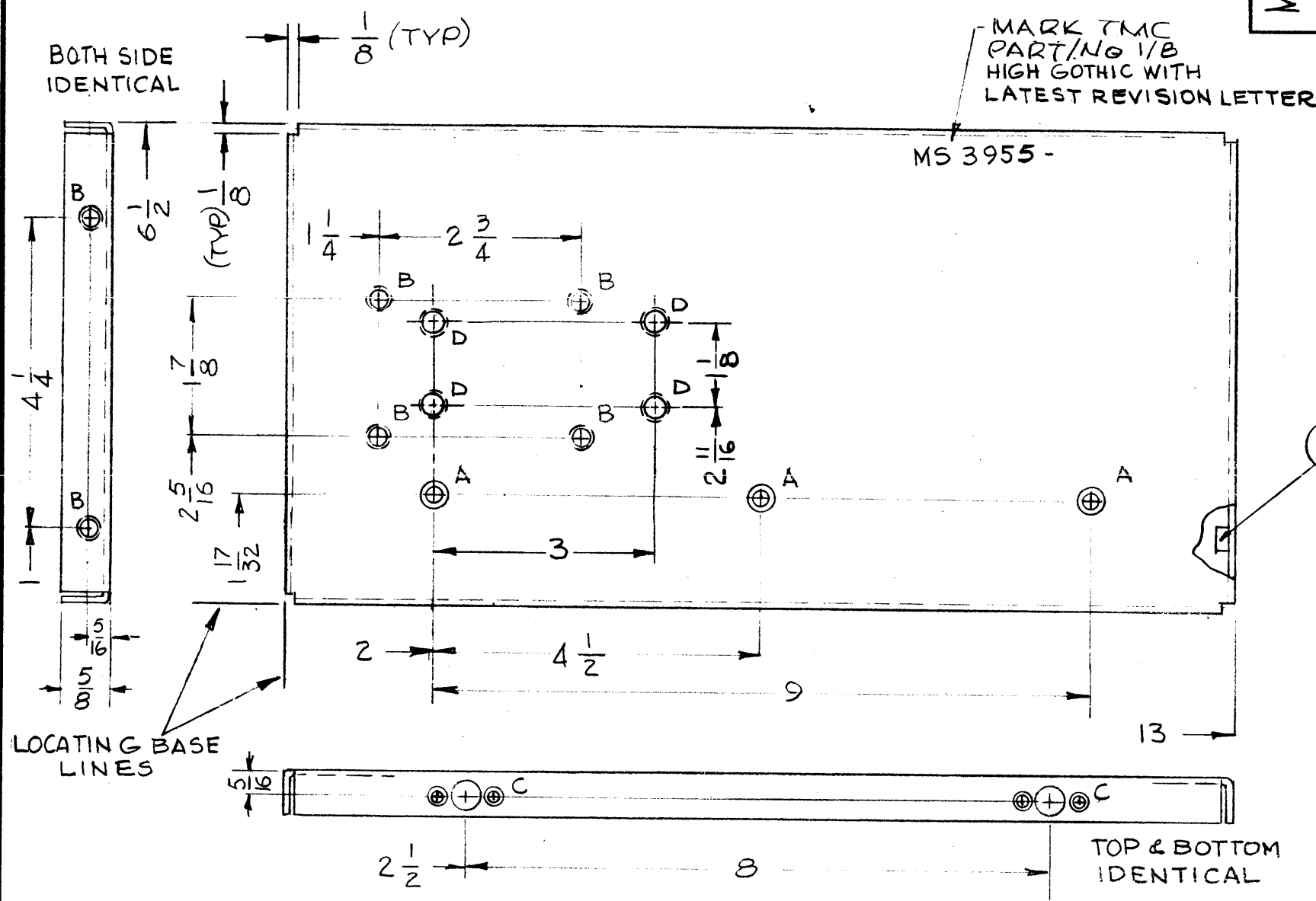


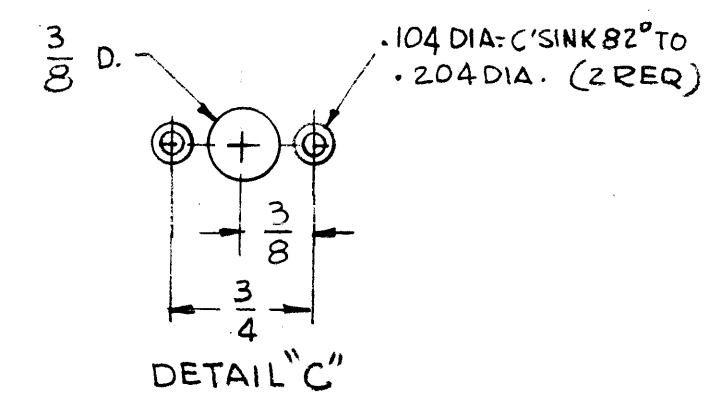
TMC PART NO	DESCRIPTION
MS 3955-1	AS SHOWN RIGHT SIDE
MS 3955-2	OPPOSITE HAND LEFT SIDE

MS 3955-B

REVISIONS					
SYM	DESCRIPTION	DATE	E.M.N. NO.	DRAFT	CHKD
X	EXPERIMENTAL RELEASE	8-11-64		G.D.L.	
Ø	ORIGINAL RELEASE FOR PRODUCTION	8-27-64		G.D.L.	
A	4 "D" HOLES ADD., IT.2 ADDED	1.21.65	13324	JB	@
B	"1/8 TYP" DIMS. ADDED	2.9.67	17814	WV	WV



HOLE	DESCRIPTION	REQ
A	.169 DIA. & C'SINK 82° TO .337 DIA	3
B	.221 - .224 DIA	8
C	SEE DETAIL	4
D	.250 - .253 DIA	4



REQ'D.	ITEM	PART NUMBER	DESCRIPTION	SYMBOL
4	2	NT 129-1032-4	NUT, ROUND, SWAGE TYPE	D
8	1	NT 129-832-4	NUT, ROUND, SWAGE TYPE	B

AALTONEN		LIST OF MATERIAL	
MATERIAL		THE TECHNICAL MATERIEL CORP.	
.064 THK. ALUMINUM 5052 - H32		MAMARONECK, NEW YORK	
FINISH		TITLE	
S404YEL IRIDITE		PLATE, SIDE RIGHT & LEFT	
UNLESS OTHERWISE SPECIFIED DIMENSIONS ARE IN INCHES AND INCLUDE CHEMICALLY APPLIED OR PLATED FINISHES		DRAWN	DATE
		G.D.L.	8-11-64
		CHECKED	DATE
		WV	
		ELECT. DES.	DATE
		MECH. DES.	DATE
		FINAL APPROVAL	
		MS 3955-B	
		SHEET	

- UNLESS OTHERWISE SPECIFIED:
- USE MATERIAL THICKNESS FOR MAXIMUM RADIUS ON ALL BENDS
  - ALL ANGULAR BENDS 90 DEGREES
  - REMOVE ALL BURRS AND SHARP EDGES
  - MOUNT INSERTS AFTER FINISHING

NOTES

Q'TY./UNIT	MODEL USED ON	ASS'Y. NO.
1	SME-1	
1	SMR-1	
SCALE	CODE	
1:2	A	

THE CONTENTS OF THIS DRAWING ARE THE EXCLUSIVE PROPERTY OF THE TECHNICAL MATERIEL CORP. ITS UNAUTHORIZED USE OR REPRODUCTION IN WHOLE OR IN PART IS STRICTLY FORBIDDEN.

DECIMALS	FRACTIONS
.X ± .05	± 1/64
.XX ± .01	ANGLES ± 0° 30'
.XXX ± .005	