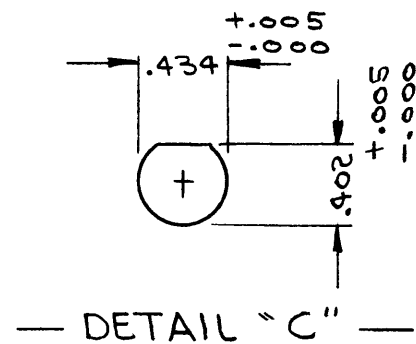


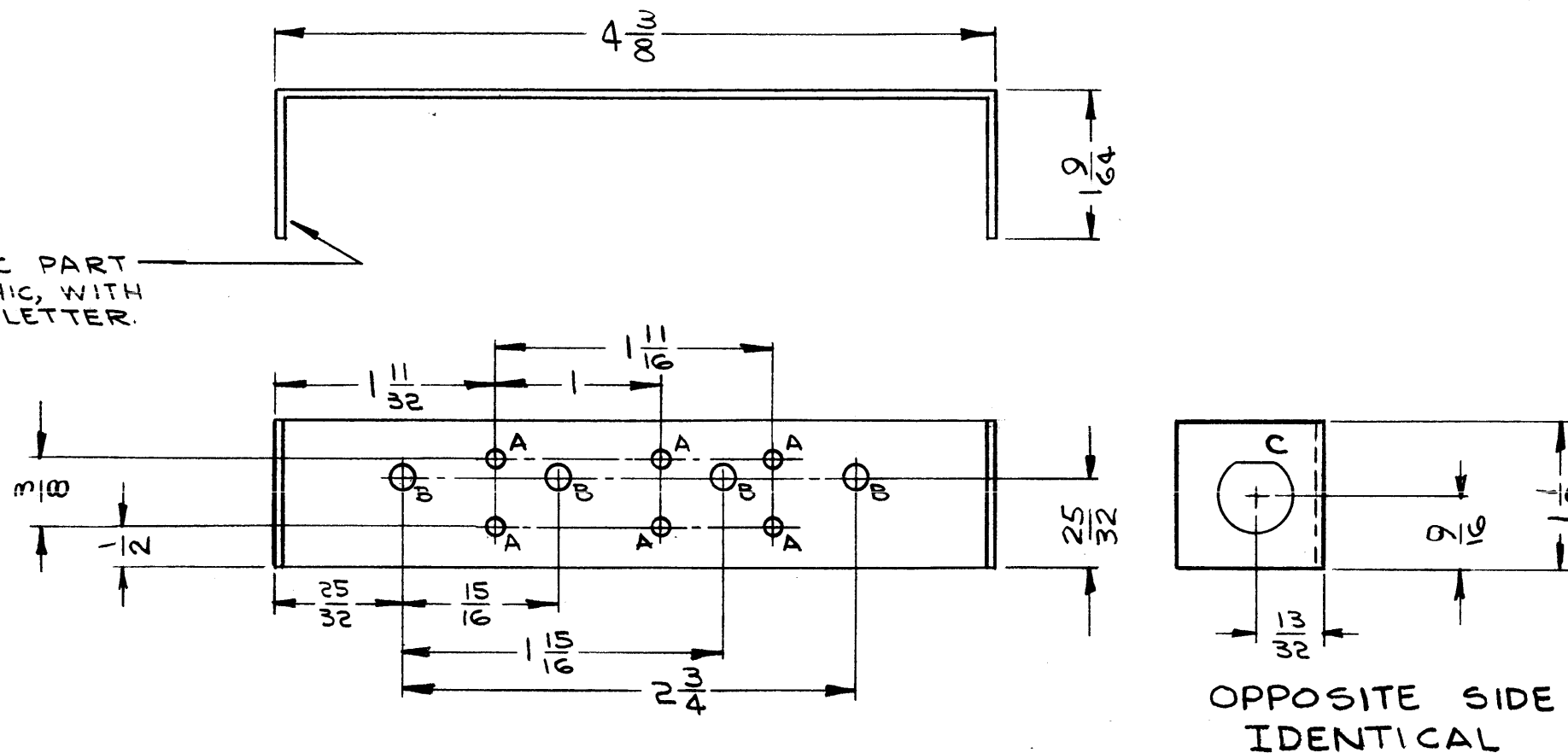
HOLE	DESCRIPTION	REQ.
A	.039 DIA	6
B	.140 DIA.	4
C	SEE DETAIL	2



MS3947 A

REVISIONS					
SYM	DESCRIPTION	DATE	E.M.N. NO.	DRAFT	CHKD APPD
X	EXPER. RELEASE	10-28-64	X	<i>[Signature]</i>	
Ø	ORIGINAL RELEASE FOR PRODUCTION	11-13-64	Ø	<i>[Signature]</i>	
A	1/2 DIM. WAS 1/4; 25/32 DIM. WAS 17/32; 9/16 DIM. WAS 7/16; 1-1/8 DIM. WAS 7/8; 1-9/64 DIM. WAS 57/64; MATERIAL THK. WAS 3/64; DN MODEL: /F X208 ADDED.	2-25-65	13538	9.2.	<i>[Signature]</i>

METAL STAMP TMC PART NO. 1/8 HIGH GOTHIC, WITH LATEST REVISION LETTER.



UNLESS OTHERWISE SPECIFIED:

1. USE MATERIAL THICKNESS FOR MAXIMUM RADIUS ON ALL BENDS
2. ALL ANGULAR BENDS 90 DEGREES
3. REMOVE ALL BURRS AND SHARP EDGES

NOTES

1	VLRB-1/FX208	A3750
Q'TY./UNIT	MODEL USED ON	ASS'Y. NO.
SCALE 1:1	CODE A	
THE CONTENTS OF THIS DRAWING ARE THE EXCLUSIVE PROPERTY OF THE TECHNICAL MATERIEL CORP. ITS UNAUTHORIZED USE OR REPRODUCTION IN WHOLE OR IN PART IS STRICTLY FORBIDDEN.		

REQ'D.	ITEM	PART NUMBER	DESCRIPTION	SYMBOL
GELLMAN LIST OF MATERIAL				
MATERIAL		THE TECHNICAL MATERIEL CORP. MAMARONECK, NEW YORK		
FINISH		TITLE CHASSIS, SUB		
UNLESS OTHERWISE SPECIFIED DIMENSIONS ARE IN INCHES AND INCLUDE CHEMICALLY APPLIED OR PLATED FINISHES		DRAWN <i>[Signature]</i>	DATE 10-28-64	FINAL APPROVAL <i>[Signature]</i>
		CHECKED <i>[Signature]</i>	DATE 11-4-64	
		ELECT. DES.	DATE	
		MECH. DES. <i>[Signature]</i>	DATE	
		MS3947		A
		SHEET		REV. LTR.