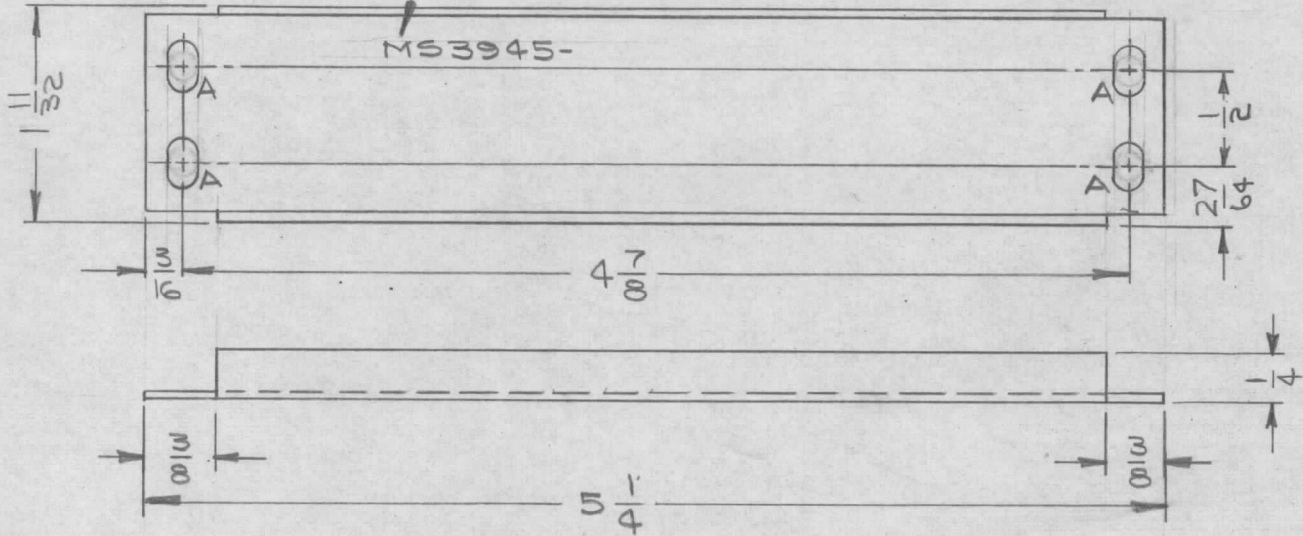


REQ. PER UNIT	USED ON			MS3945	A
	MODEL	ASS'Y. NO.	DATE		
1	VLRB-1/FX208	A 3750	10-28-64		

METAL STAMP TMC PART NO. 1/8 HIGH GOTHIC, WITH LATEST REVISION LETTER.



HOLE	DESCRIPTION	REQ.
A	1/4 x 9/64 SLOT	4

1. USE MATERIAL THICKNESS FOR MAXIMUM RADIUS ON ALL BENDS
2. ALL ANGULAR BENDS 90 DEGREES
3. REMOVE ALL BURRS AND SHARP EDGES

A	"A" SLOTS WERE .140 DIA. HOLES; 1-11/32 WAS 1-3/32; 27/64 WAS 19/64; MAT'L. THK. WAS 3/64; /FX 208 ADD. TO MODEL.	2.25.65	13538	2L	J.P.B.	REQ.	ITEM	PART NO.	GELLMAN	DESCRIPTION	SYMBOL	
Ø	ORIGINAL RELEASE FOR PRODUCTION	11.13.64	Ø	2L		.040 THK			THE TECHNICAL MATERIEL CORP. MAMARONECK, NEW YORK			
X	EXPER. RELEASE	10.28.64	X	J. Seaver		COPPER			PLATE, BOTTOM			
SYM	DESCRIPTION	DATE	CH. NO.	DRAFTS	CHECKER	ENG. APP.	MATERIAL					
UNLESS OTHERWISE SPECIFIED DIMENSIONS ARE IN INCHES AND INCLUDE CHEMICALLY APPLIED OR PLATED FINISHES		SCALE		1:1			TYPE & TEMPER	HEAT TREAT. SPEC.	DRAWN	CHECKED	FINAL APPROVAL	
DECIMALS .X ± .05 .XX ± .01 .XXX ± .005	TOLERANCES	FRACTIONS ± 1/64 ANGLES ± 0° 30'	CODE	A			FINISH & SPEC. NO.	ELEC. DES. APP.	MECH. DES. APP.	MS3945	A	