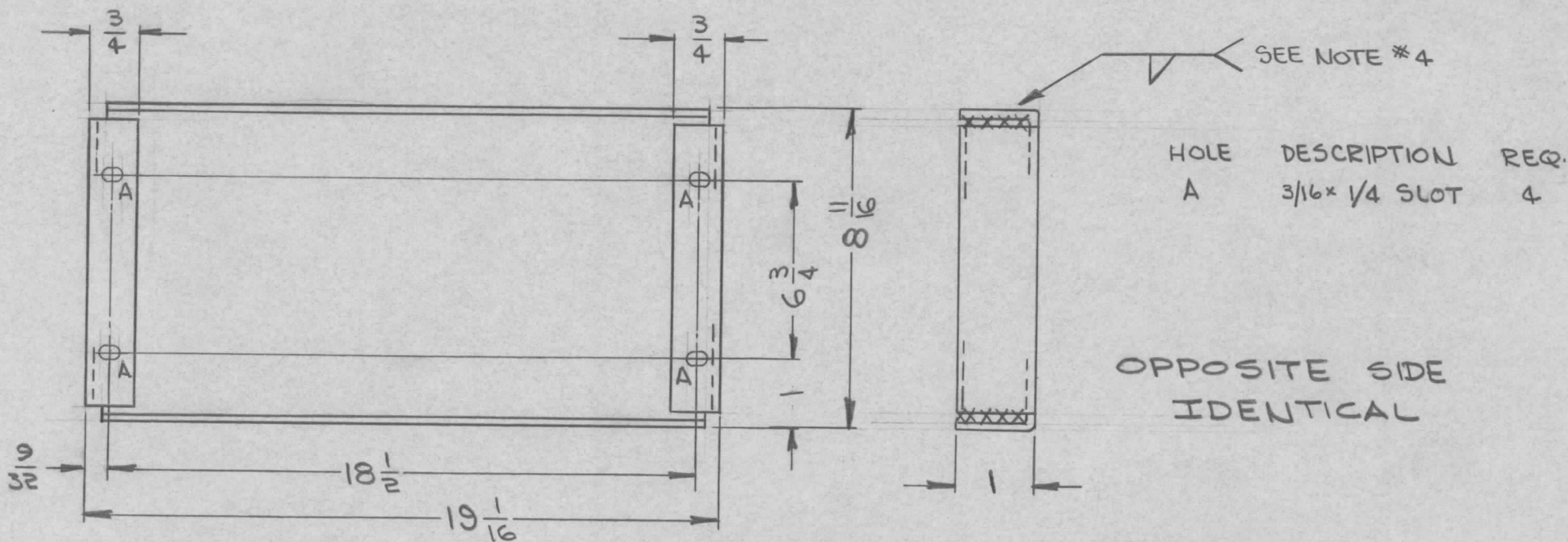


REQ. PER UNIT	USED ON			MS3923	⊕
	MODEL	ASS'Y. NO.	DATE		
1	RAK-43	A3728	7-27-64		



NOTES:

1. USE MATERIAL THICKNESS FOR MAXIMUM RADIUS ON ALL BENDS
2. ALL ANGULAR BENDS 90 DEGREES
3. REMOVE ALL BURRS AND SHARP EDGES
4. WELD 4 CORNERS

FINISH NOTES:  
 S114-ZINC CHROMATE PRIMER  
 S520-BLUE GRAY TEXTURED PAINT.  
*OK Prim & Paint Per Cust Spec.*

⊕	ORIGINAL RELEASE FOR PRODUCTION	9-3-64	⊕	<i>[Signature]</i>			REQ. ITEM	PART NO.	STURMER	DESCRIPTION	SYMBOL
XI	CORNER WELDS ADDED	8-5-64	XI	<i>[Signature]</i>			16 GAUGE		THE TECHNICAL MATERIEL CORP. MAMARONECK, NEW YORK		
X	EXPER. RELEASE	7-27-64	X	<i>[Signature]</i>			C.R. STEEL		PANEL, FILLER, REAR		
SYM	DESCRIPTION	DATE	CH. NO.	DRAFTS	CHECKER	ENG. APP.	MATERIAL				
UNLESS OTHERWISE SPECIFIED DIMENSIONS ARE IN INCHES AND INCLUDE CHEMICALLY APPLIED OR PLATED FINISHES						SCALE	<i>[Signature]</i>	<i>[Signature]</i>	<i>[Signature]</i>	@ 9-4-64	<i>[Signature]</i>
DECIMALS .X ± .05 .XX ± .01 .XXX ± .005	TOLERANCES	FRACTIONS ± 1/64 ANGLES ± 0° 30'	CODE A				TYPE & TEMPER	HEAT TREAT. SPEC.	DRAWN	CHECKED	FINAL APPROVAL
							SEE NOTES			@ 9-4-64	MS3923
							FINISH & SPEC. NO.	ELEC. DES. APP.	MECH. DES. APP.	⊕	