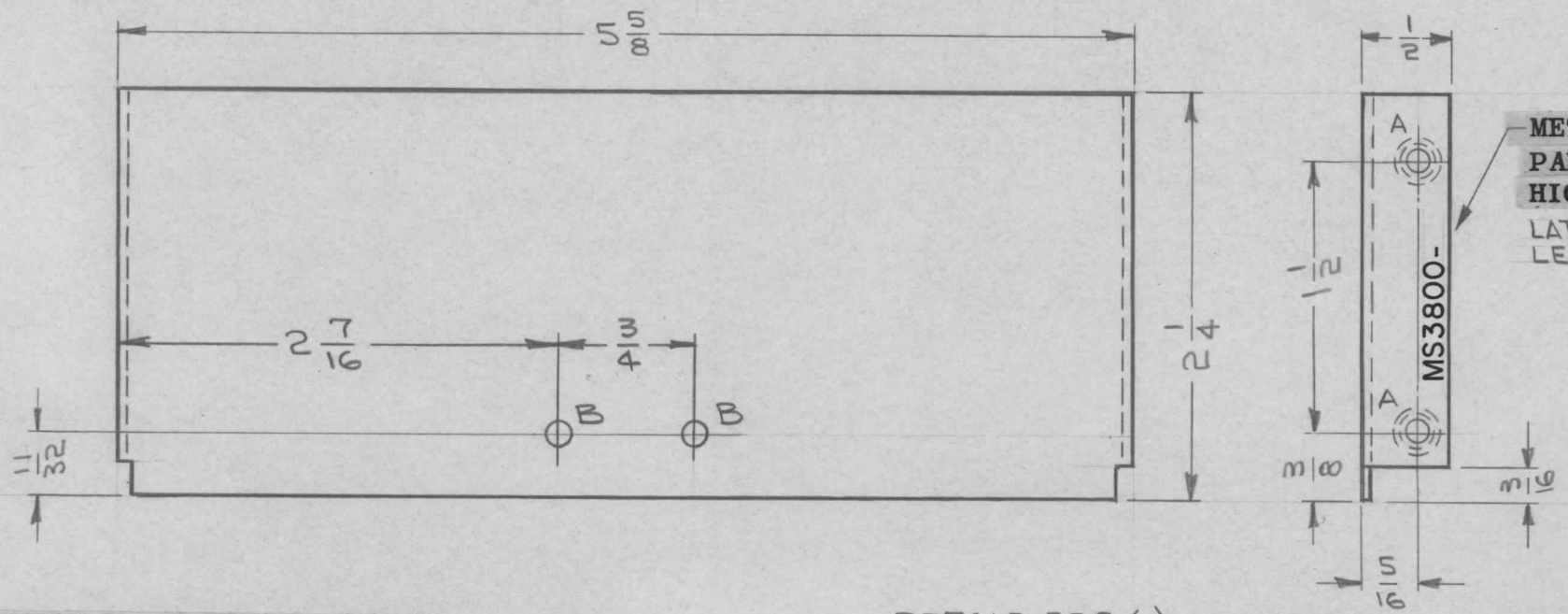
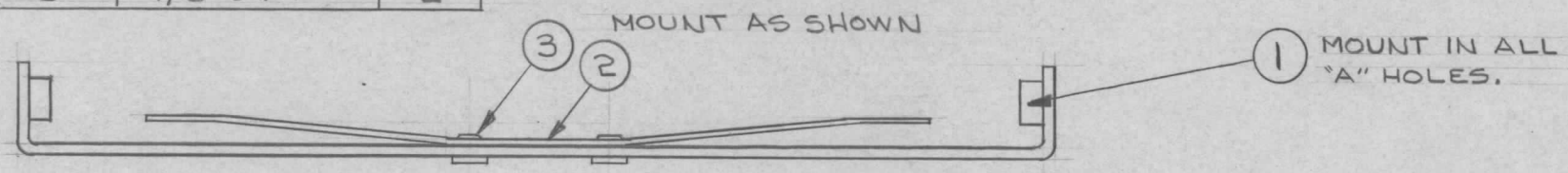


HOLE	DESCRIPTION	REQ.
A	.161-.164 DIA	4
B	1/8 DIA.	2

REQ. PER UNIT	USED ON		
	MODEL	ASS'Y. NO.	DATE
1	SBS-7	A2887	5-8-64

MS3800 \emptyset



- UNLESS OTHERWISE SPECIFIED:**
1. USE MATERIAL THICKNESS FOR MAXIMUM RADIUS ON ALL BENDS.
 2. ALL ANGULAR BENDS 90°.
 3. REMOVE ALL BURRS AND SHARP EDGES.
 4. MOUNT INSERTS AFTER FINISHING.

REF: LD1538 (1)

OPPOSITE SIDE IDENTICAL

REQ.	ITEM	PART NO.	DESCRIPTION	SYMBOL
2	3	EY100-1	EYLET, FLAT FLANGE	B
1	2	SP151538	SPRING, RETAINER-AIR FILTER	B
4	1	NT129-440-4	NUT, ROUND, SWAGE TYPE	A

SYM	DESCRIPTION	DATE	CH. NO.	DRAFTS	CHECKER	ENG. APP.
\emptyset	ORIGINAL RELEASE	11/1/65				
XI	2 "B" HOLES ADDED ITEM 2 ADDED	7/8/64	2	<i>John</i>	<i>W. B. King</i>	
X	EXPER. RELEASE	5-8-64	1	<i>G. J. ...</i>		

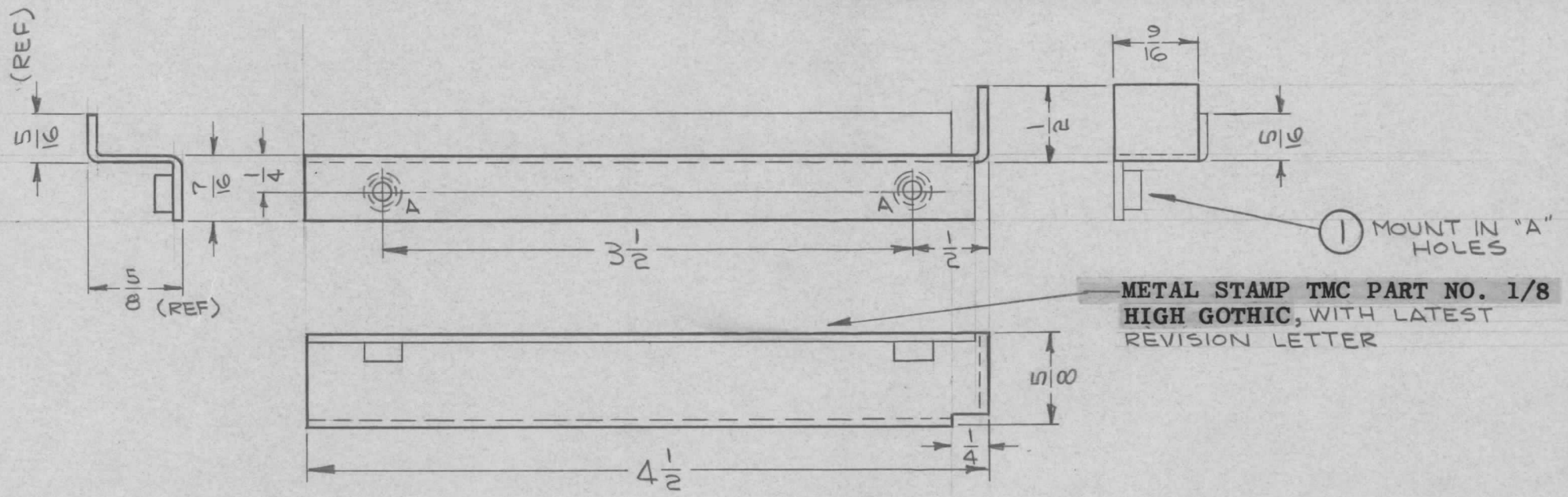
UNLESS OTHERWISE SPECIFIED		SCALE	
DIMENSIONS ARE IN INCHES AND INCLUDE CHEMICALLY APPLIED OR PLATED FINISHES		1:1	
DECIMALS	FRACTIONS	CODE	
.X \pm .05	\pm 1/64	A	
.XX \pm .01	ANGLES		
.XXX \pm .005	\pm 0° 30'		

MATERIAL		THE TECHNICAL MATERIEL CORP.		
.064 THK STOCK SIZE		MAMARONECK, NEW YORK		
ALUMINUM		COVER, HOUSING, BLOWER		
5052-H32		<i>G. J. ...</i>	<i>J.P.</i>	<i>John W. King 10/2/65</i>
TYPE & TEMPER	HEAT TREAT. SPEC.	DRAWN	CHECKED	FINAL APPROVAL
S404 YELLOW IRIDITE		<i>SD</i>	<i>J.P.</i>	
FINISH & SPEC. NO.	ELEC. DES. APP.	MECH. DES. APP.	MS3800 \emptyset	

HOLE	DESCRIPTION	REQ.
A	.161-.164 DIA	2

REQ. PER UNIT	USED ON		
	MODEL	ASS'Y. NO.	DATE
1	SBS-7	AZ887	5-8-64

MS3801 \emptyset



UNLESS OTHERWISE SPECIFIED:

1. USE MATERIAL THICKNESS FOR MAXIMUM RADIUS ON ALL BENDS.
2. ALL ANGULAR BENDS 90°.
3. REMOVE ALL BURRS AND SHARP EDGES.
4. MOUNT INSERTS AFTER FINISHING.

						2	1	NT129-440-4	NUT, ROUND, SWAGE TYPE	A		
						REQ. ITEM		PART NO.	O. POSE	DESCRIPTION	SYMBOL	
								.064 THK STOCK SIZE	THE TECHNICAL MATERIEL CORP. MAMARONECK, NEW YORK			
								ALUMINUM	BRACKET, MOUNTING- LEFT SIDE			
								MATERIAL				
								5052-H32	<i>J. Swan</i>	<i>JB</i>	<i>[Signature]</i> 10/30/65	
								TYPE & TEMPER	HEAT TREAT. SPEC.	DRAWN	CHECKED	FINAL APPROVAL
								S404, YELLOW IRIDITE		<i>SD</i>	<i>P.S.</i>	MS3801 \emptyset
								FINISH & SPEC. NO.	ELEC. DES. APP.	MECH. DES. APP.		

\emptyset ORIGINAL RELEASE

UNLESS OTHERWISE SPECIFIED
DIMENSIONS ARE IN INCHES AND INCLUDE
CHEMICALLY APPLIED OR PLATED FINISHES

DECIMALS
.X \pm .05
.XX \pm .01
.XXX \pm .005

FRACTIONS
 \pm 1/64
ANGLES
 \pm 0° 30'

TOLERANCES

CODE
A

DATE 11/1/65

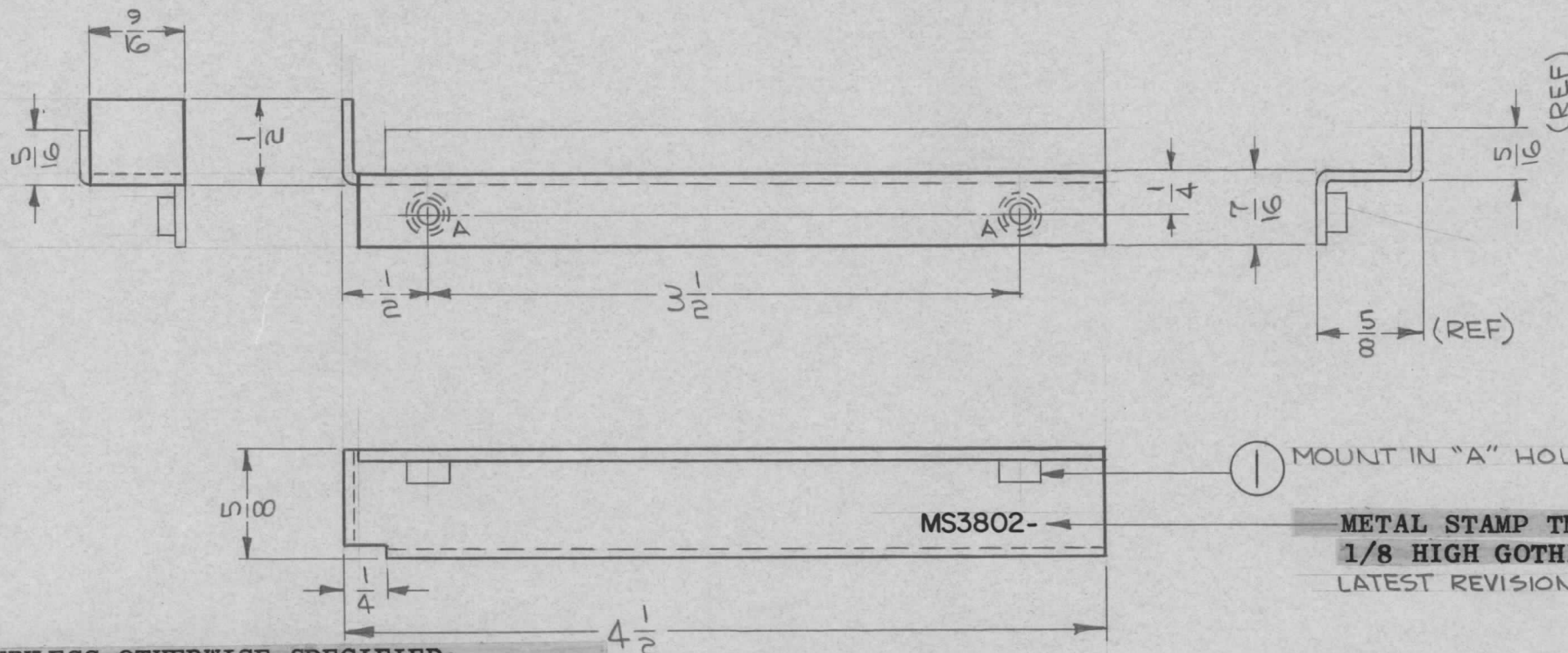
SCALE 1:1

CH. NO. DRAFTS CHECKER ENG. APP.

HOLE	DESCRIPTION	REQ.
A	.161 - .164 DIA	2

REQ. PER UNIT	USED ON		
	MODEL	ASS'Y. NO.	DATE
1	SBS-74	A2887	5-8-64

MS3802 \emptyset



① MOUNT IN "A" HOLES.
METAL STAMP TMC PART NO. 1/8 HIGH GOTHIC, WITH LATEST REVISION LETTER.

- UNLESS OTHERWISE SPECIFIED:**
1. USE MATERIAL THICKNESS FOR MAXIMUM RADIUS ON ALL BENDS.
 2. ALL ANGULAR BENDS 90°.
 3. REMOVE ALL BURRS AND SHARP EDGES.
 4. MOUNT INSERTS AFTER FINISHING.

SYM	DESCRIPTION	DATE	CH. NO.	DRAFTS	CHECKER	ENG. APP.	REQ. ITEM	PART NO.	DESCRIPTION	SYMBOL				
							2	1	NT129-440-4	NUT, ROUND, SWAGE TYPE	A			
									.064 THK STOCK SIZE	THE TECHNICAL MATERIEL CORP. MAMARONECK. NEW YORK BRACKET, MOUNTING-RIGHT SIDE				
									ALUMINUM MATERIAL					
									5052-H32					
									TYPE & TEMPER	HEAT TREAT. SPEC.	DRAWN	CHECKED	FINAL APPROVAL	
									S404, YELLOW IRIDITE				MS3802	\emptyset
									FINISH & SPEC. NO.	ELEC. DES. APP.	MECH. DES. APP.			

\emptyset ORIGINAL RELEASE

UNLESS OTHERWISE SPECIFIED DIMENSIONS ARE IN INCHES AND INCLUDE CHEMICALLY APPLIED OR PLATED FINISHES

DECIMALS
.X ± .05
.XX ± .01
.XXX ± .005

FRACTIONS
± 1/64
ANGLES
± 0° 30'

TOLERANCES

CODE
A

SCALE 1:1

11/1/65

5052-H32

S404, YELLOW IRIDITE

FINISH & SPEC. NO.

ELEC. DES. APP.

MECH. DES. APP.

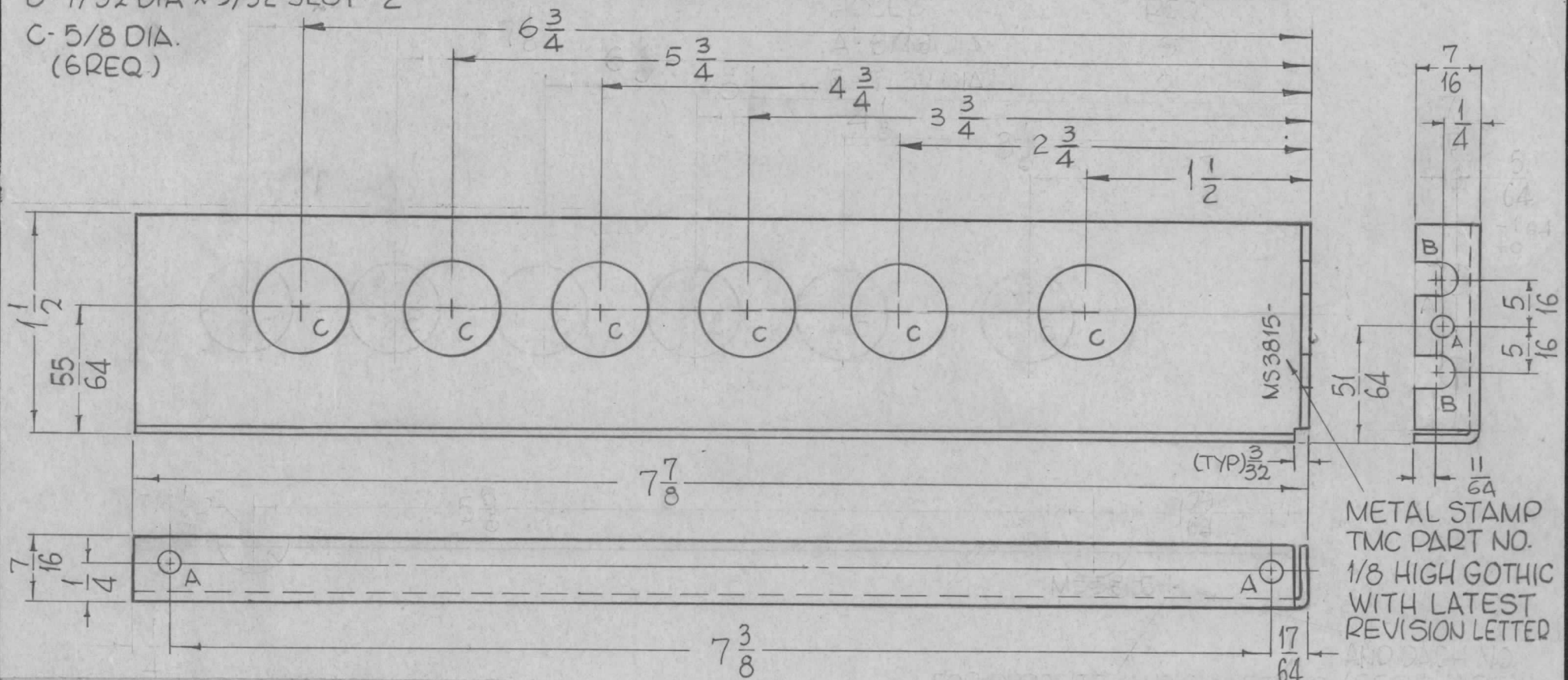
MS3802 \emptyset

HOLES

- A-3/16 DIA. 3
- B-7/32 DIA x 9/32 SLOT 2
- C-5/8 DIA. (6REQ.)

REQ. PER UNIT	USED ON	
	MODEL	DATE
1EA	STR-1A	5-15-64
1EA	STE	5-15-64

MS3815 Ø



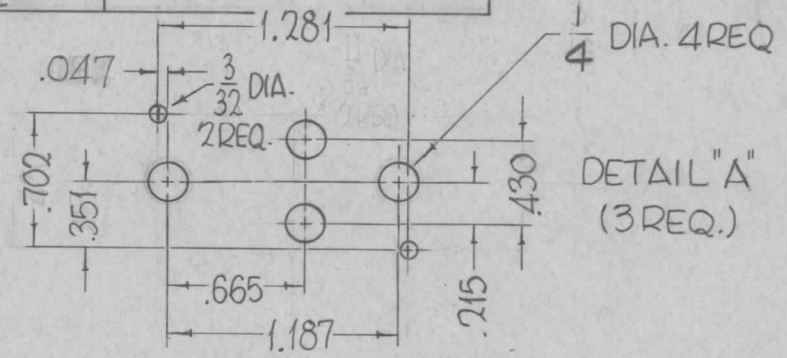
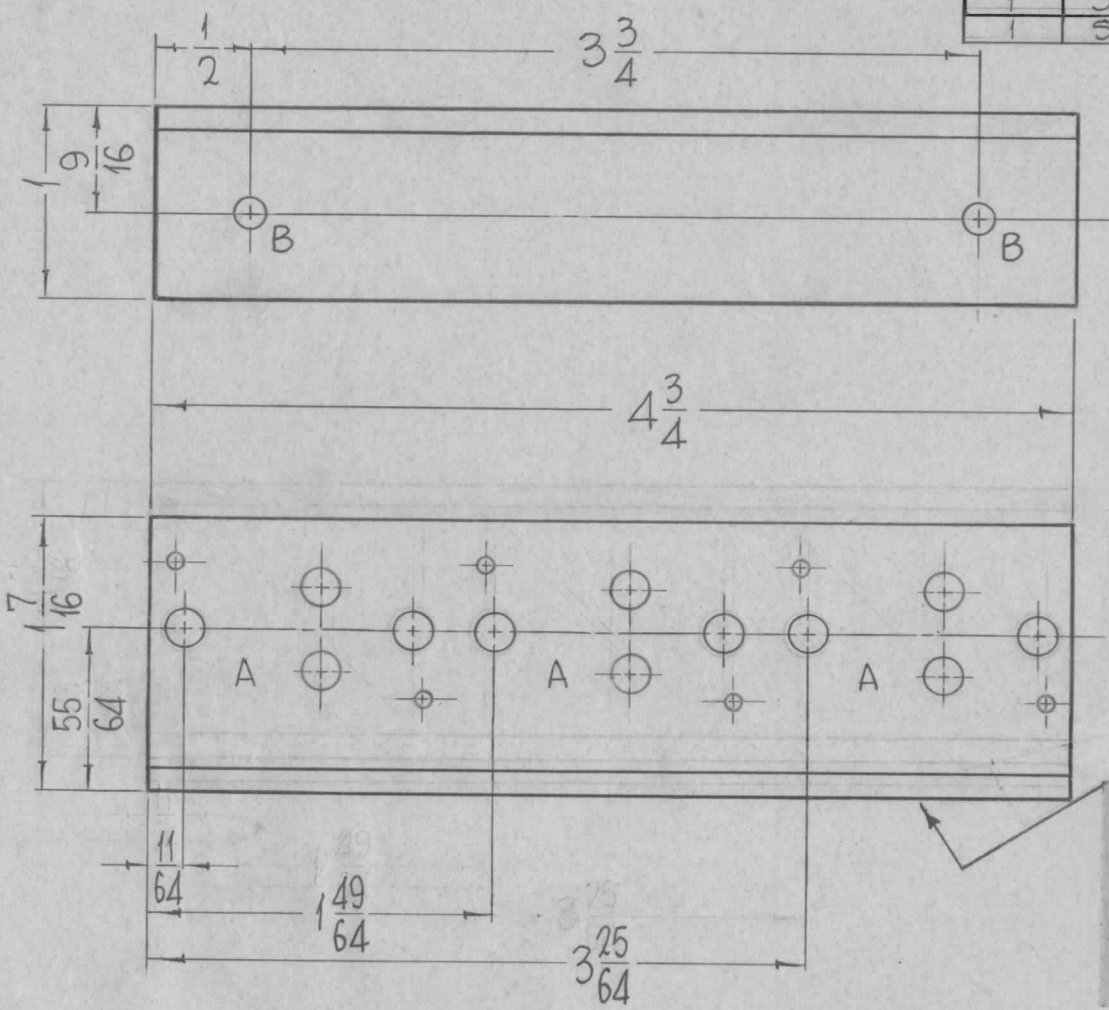
METAL STAMP
TMC PART NO.
1/8 HIGH GOTHIC
WITH LATEST
REVISION LETTER

UNLESS OTHERWISE SPECIFIED:

1. USE MATERIAL THICKNESS FOR MAXIMUM RADIUS ON ALL BENDS.
2. ALL ANGULAR BENDS 90°.
3. REMOVE ALL BURRS AND SHARP EDGES.

Ø	ORIGINAL RELEASE FOR PRODUCTION	9-24-64	Ø	JL	REQ. ITEM	PART NO.	T. AALTONEN	DESCRIPTION	SYMBOL	
X2	"B" HOLES WERE 7/32 DIA	6-4-64	#	G.D.L	.064 THICK		THE TECHNICAL MATERIEL CORP. MAMARONECK, NEW YORK			
X1	ALL "C" HOLES RELOCATED	6-3-64	#	G.D.L	STOCK SIZE					
X	EXPERIMENTAL RELEASE	5-15-64	#	G.D.L	ALUMINUM		BRACKET, UNIT GUIDE			
SYM		DESCRIPTION	DATE	CH. NO.	DRAFTS	CHECKER	ENG. APP.	LEFT SIDE		
UNLESS OTHERWISE SPECIFIED		SCALE		5052-H32		John C Biele		DRAWN		
DIMENSIONS ARE IN INCHES AND INCLUDE		1:1		TYPE & TEMPER		HEAT TREAT. SPEC.		CHECKED		
CHEMICALLY APPLIED OR PLATED FINISHES		CODE		S404-IRIDITE, 14-2 AL COAT		DRAWN		FINAL APPROVAL		
DECIMALS	FRACTIONS	A		FINISH & SPEC. NO.		ELEC. DES. APP.		MECH. DES. APP.		
.X ± .05	± 1/64			5404-IRIDITE, 14-2 AL COAT		TJA		MS3815 Ø		
.XX ± .01	ANGLES			FINISH & SPEC. NO.		ELEC. DES. APP.		MECH. DES. APP.		
.XXX ± .005	± 0° 30'									

REQ. PER UNIT	USED ON		MS3816 A
	MODEL	DATE	
1	STR-1A	5-18-64	
1	STE		



HOLES REQ
 B-11/64 DIA 2

METAL STAMP TMC PART NO. 1/8 HIGH GOTHIC ON THIS SURFACE, WITH LATEST REVISION LETTER.

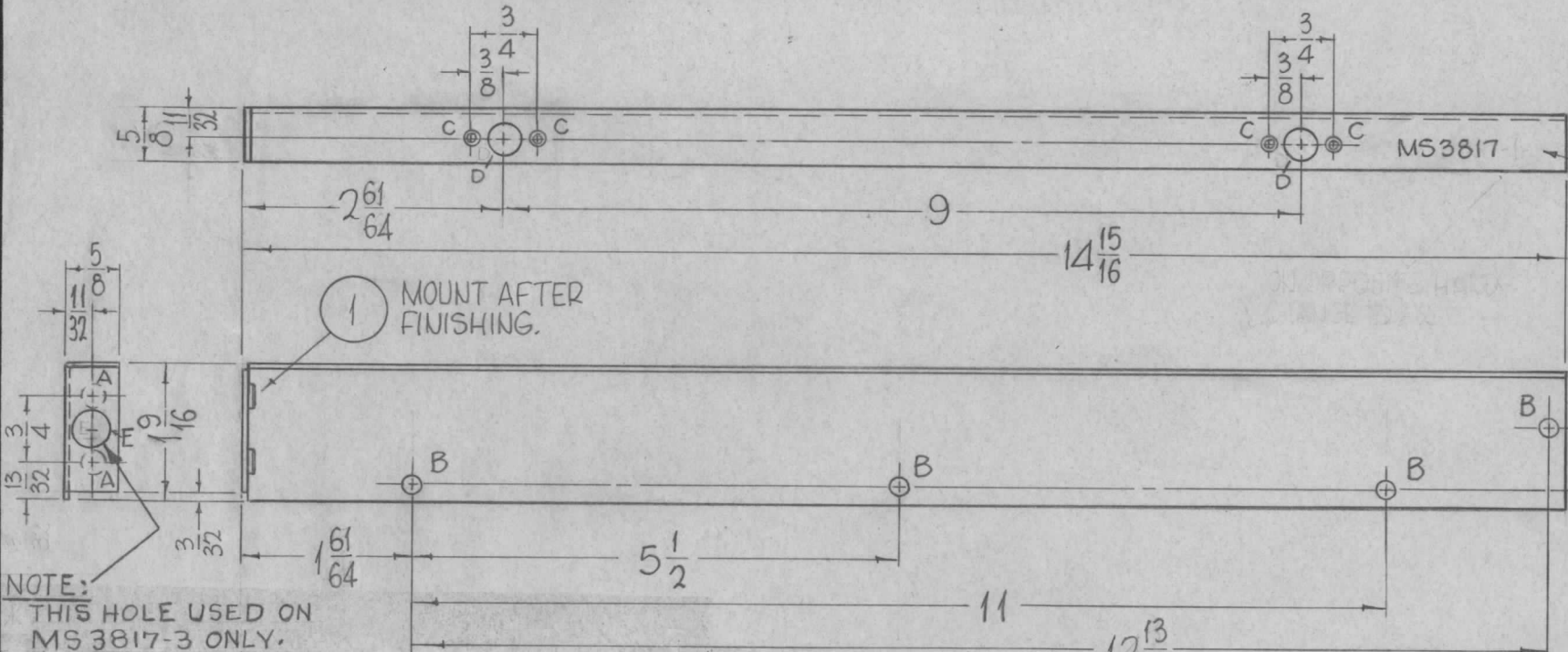
- UNLESS OTHERWISE SPECIFIED:
1. USE MATERIAL THICKNESS FOR MAXIMUM RADIUS ON ALL BENDS
 2. ALL ANGULAR BENDS 90 DEGREES
 3. REMOVE ALL BURRS AND SHARP EDGES

REF-TMC DWG LD1541

SYM	DESCRIPTION	DATE	CH. NO.	DRAFTS	CHECKER	ENG. APP.	REQ. ITEM	PART NO.	T. AALTONEN DESCRIPTION	SYMBOL			
A	RELOC P/N STAMP	12-13-66	17470	RME	<i>[Signature]</i>				THE TECHNICAL MATERIEL CORP. MAMARONECK, NEW YORK	A			
Ø	ORIGINAL RELEASE FOR PRODUCTION	9-24-64	Ø	92			1/8 THICK						
X	EXPERIMENTAL RELEASE	5/18/64		G.D.L.			ALUMINUM	BRACKET, MTG HEAT SINK					
UNLESS OTHERWISE SPECIFIED DIMENSIONS ARE IN INCHES AND INCLUDE CHEMICALLY APPLIED OR PLATED FINISHES							SCALE						
							1:1						
DECIMALS .X ± .05 .XX ± .01 .XXX ± .005							TOLERANCES		FRACTIONS ± 1/64 ANGLES ± 0° 30'		CODE	A	
							5052-H-32	#	John C. Biele	<i>[Signature]</i>	<i>[Signature]</i>		
							S404-IRIDITE, 14-2 AL COAT		g.f. @				
							FINISH & SPEC. NO.	ELEC. DES. APP.	MECH. DES. APP.	MS3816 A			

TMC PT. NO.	DESCRIPTION	REQ. PER UNIT	USED ON		
			MODEL	ASS'Y. NO.	DATE
MS3817-1	AS SHOWN (LEFT SIDE) W/O "E" HOLE	1EA.	STR-1A		5-15-64
MS3817-2	OPPOSITE HAND (RIGHT SIDE) W/O "E" HOLE	1EA	STE		5-15-64
MS3817-3	AS SHOWN WITH "E" HOLE (SEE NOTE)				

MS3817 | Ø



METAL STAMP
TMC NO. 1/8 HIGH
GOTHIC WITH
LATEST REVISION
LETTER AND
DASH NO.
(SEE CHART)

NOTE:
THIS HOLE USED ON
MS 3817-3 ONLY.

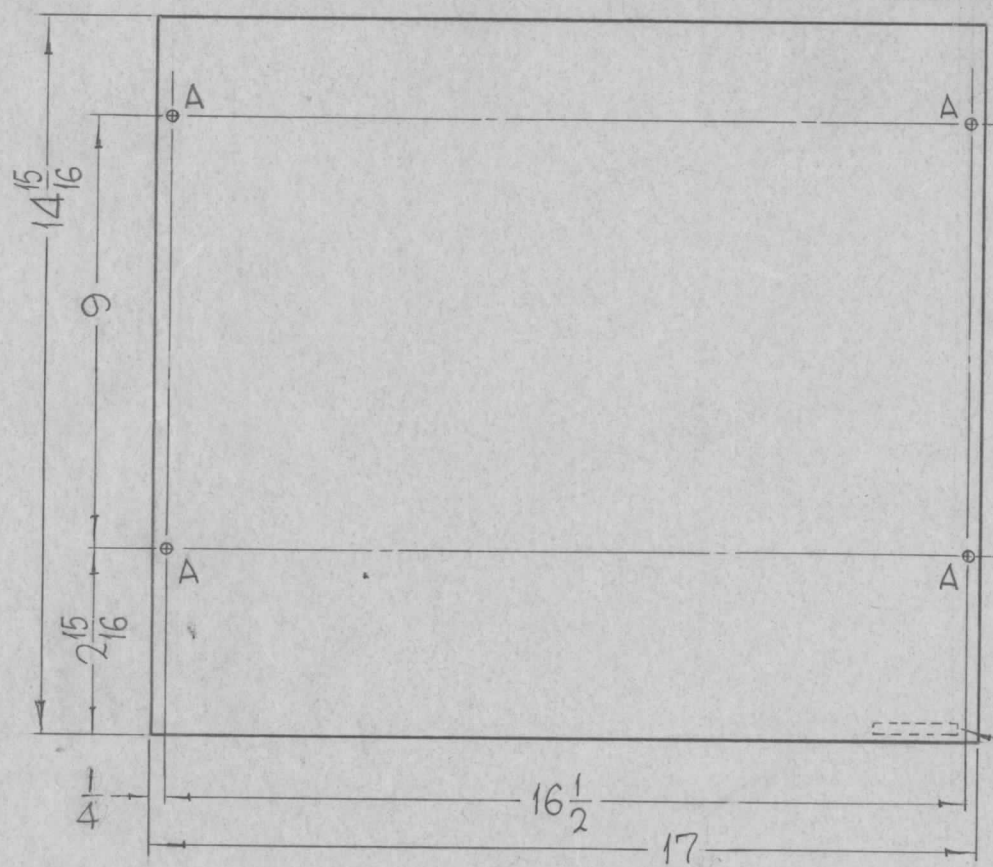
- UNLESS OTHERWISE SPECIFIED:
1. USE MATERIAL THICKNESS FOR MAXIMUM RADIUS ON ALL BENDS
 2. ALL ANGULAR BENDS 90 DEGREES
 3. REMOVE ALL BURRS AND SHARP EDGES
 4. MOUNT INSERTS AFTER FINISHING

HOLES	REQ.
A-.191 MIN., .194 MAX. DIA-	2
B-3/16 DIA.	4
C-DRILL #37 THRU	4
CSK 82° X .204 DIA.	
D-3/8 DIA	2
E-7/16 D.-1	2

SYM	DESCRIPTION	DATE	CH. NO.	DRAFTS	CHECKER	ENG. APP.	REQ. ITEM	PART NO.	T. AALTONEN DESCRIPTION	SYMBOL			
Ø	ORIGINAL RELEASE FOR PRODUCTION	9-24-64	Ø	Z.F.					NUT, ROUND, SWAGE TYPE	A			
X2	DESCRIPTIONS UPDATED * REMOVED FROM NOTE # "E" HOLE	7-7-64	X2	<i>G. L.</i>				.064 THICK	THE TECHNICAL MATERIEL CORP. MAMARONECK, NEW YORK				
X1	M3817-3 ADDED.	6/25/64	X1	A.M.				STOCK SIZE					
X	EXPERIMENTAL RELEASE	5-15-64	#	G.D.L.				ALUMINUM					
								MATERIAL		PLATE, SIDE, RT. & LEFT			
UNLESS OTHERWISE SPECIFIED DIMENSIONS ARE IN INCHES AND INCLUDE CHEMICALLY APPLIED OR PLATED FINISHES							SCALE	1:2	5052-H32	John C Biele	<i>S.A. @ RAC</i>		
									TYPE & TEMPER	HEAT TREAT. SPEC.	DRAWN	CHECKED	FINAL APPROVAL
DECIMALS .X ± .05 .XX ± .01 .XXX ± .005							TOLERANCES		FRACTIONS ± 1/64 ANGLES ± 0° 30'		CODE	A	
									S404-IRIDIUM, 14-2 AL COAT		<i>RAC</i>	MS3817 Ø	
									FINISH & SPEC. NO.		ELEC. DES. APP.	MECH. DES. APP.	

REQ. PER UNIT	USED ON		
	MODEL	ASS'Y. NO.	DATE
1	STR-1A		5-16-64
1	STE		

MS3818 Ø



HOLES REQ.
A-1/4 DIA. 4

METAL STAMP TMC NO. 1/8 HIGH GOTHIC, WITH LATEST REVISION LETTER.

FRONT VIEW SHOWN

REMOVE ALL BURRS AND SHARP EDGES.

4	2	FS110-1	STUD, SLOTTED HEAD	A
4	1	FS109-3	RING, STUD RETAINING	A
REQ. ITEM	PART NO.		T. AALTONEN DESCRIPTION	SYMBOL

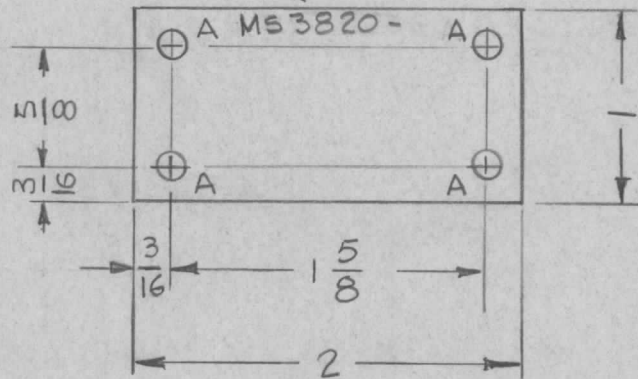
Ø	ORIGINAL RELEASE FOR PRODUCTION	9-24-64	Ø	9L		
X1	DIMENSIONS 1/4 WAS 9/32 & 17 WAS 17 1/16	6-2-64	#	G.D.L	J.R.S.	
X	EXPERIMENTAL RELEASE					
SYM	DESCRIPTION	DATE	CH. NO.	DRAFTS	CHECKER	ENG. APP.
UNLESS OTHERWISE SPECIFIED DIMENSIONS ARE IN INCHES AND INCLUDE CHEMICALLY APPLIED OR PLATED FINISHES		SCALE 1:4				
DECIMALS .X ± .05 .XX ± .01 .XXX ± .005	TOLERANCES	FRACTIONS ± 1/64 ANGLES ± 0° 30'	CODE A			

.051 THICK		THE TECHNICAL MATERIEL CORP. MAMARONECK, NEW YORK		
STOCK SIZE		COVER, TOP		
ALUMINUM		MATERIAL		
5052-H32	#	John C Biele	AT @	RAC
TYPE & TEMPER	HEAT TREAT. SPEC.	DRAWN	CHECKED	FINAL APPROVAL
S404-IRIDITE, 14-2 ALCOAT		Jka		
FINISH & SPEC. NO.		ELEC. DES. APP.	MECH. DES. APP.	
				MS3818 Ø

REQ. PER UNIT	USED ON			MS 3820 Φ
	MODEL	ASS'Y. NO.	DATE	
2	HFR-2		5-16-64	

METAL STAMP TMC PART NO. 1/8 HIGH GOTHIC.
WITH LATEST REVISION LETTER

HOLE	DESCRIPTION	REQ.
A	9/64 DIA.	4



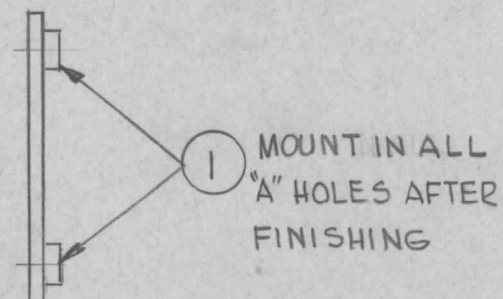
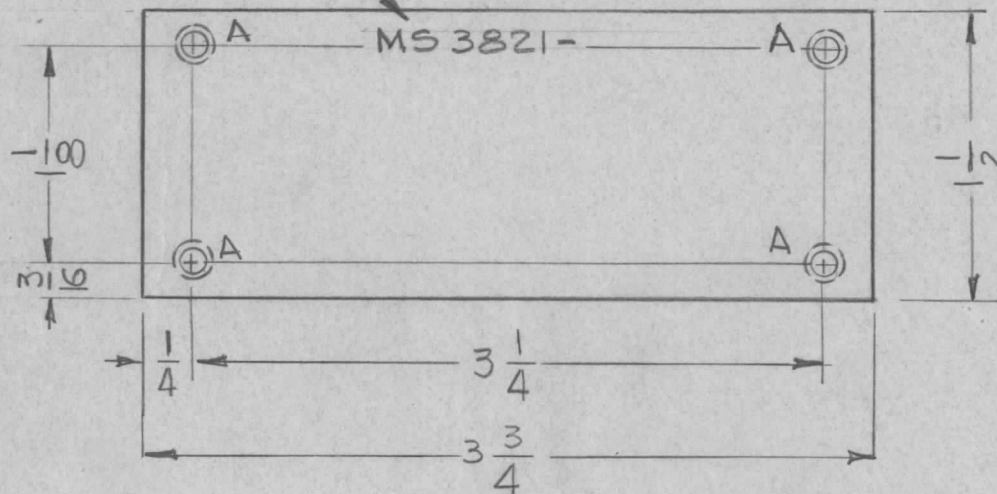
UNLESS OTHERWISE SPECIFIED:
REMOVE ALL BURRS AND SHARP EDGES

							REQ. ITEM	PART NO.	ANGER	DESCRIPTION	SYMBOL
								.081 THK.		THE TECHNICAL MATERIEL CORP.	
								STOCK SIZE		MAMARONECK.	NEW YORK
Φ	ORIGINAL RELEASE FOR PRODUCTION	8-13-64	Φ					ALUMINUM		PLATE, COVER	
X	EXPERIMENTAL RELEASE	5-18-64	X		G.D.L.						
SYM	DESCRIPTION	DATE	CH. NO.	DRAFTS	CHECKER	ENG. APP.	MATERIAL				
UNLESS OTHERWISE SPECIFIED DIMENSIONS ARE IN INCHES AND INCLUDE CHEMICALLY APPLIED OR PLATED FINISHES						SCALE	5052-H32	M	G.D.L.	@	RAT
						1:1	TYPE & TEMPER	HEAT TREAT. SPEC.	DRAWN	CHECKED	FINAL APPROVAL
DECIMALS .X \pm .05 .XX \pm .01 .XXX \pm .005	TOLERANCES	FRACTIONS \pm 1/64 ANGLES \pm 0° 30'	CODE A				S404 IRIDITE 14-2ALCOAT		Janger		MS 3820 Φ
							FINISH & SPEC. NO.	ELEC. DES. APP.	MECH. DES. APP.		

REQ. PER UNIT	USED ON			MS 3821	Φ
	MODEL	ASS'Y. NO.	DATE		
1	HFR-2		5-16-64		

METAL STAMP TMC PART NO. 1/8 HIGH GOTHIC.
WITH LATEST REVISION LETTERS

LEGEND		
HOLE	DESCRIPTION	REQ
A	.164-.161 DIA.	4



UNLESS OTHERWISE SPECIFIED,
REMOVE ALL BURRS & SHARP
EDGES.

4	1	NT 129-440-4	NUT, ROUND, SWAGE TYPE		A	
REQ. ITEM	PART NO.		ANGER	DESCRIPTION	SYMBOL	
Φ	ORIGINAL RELEASE FOR PRODUCTION	8-13-64	Φ	<i>Jm</i>		
X	EXPERIMENTAL RELEASE	5/18-64	X	G.D.L		
SYM	DESCRIPTION	DATE	CH. NO.	DRAFTS	CHECKER	ENG. APP.
UNLESS OTHERWISE SPECIFIED DIMENSIONS ARE IN INCHES AND INCLUDE CHEMICALLY APPLIED OR PLATED FINISHES		SCALE 1:1				
DECIMALS .X ± .05 .XX ± .01 .XXX ± .005	TOLERANCES	FRACTIONS ± 1/64 ANGLES ± 0° 30'	CODE A			
		5052-H32	<i>M</i>	G.D.L	@	<i>RAC</i>
		TYPE & TEMPER	HEAT TREAT. SPEC.	DRAWN	CHECKED	FINAL APPROVAL
		S.404-IRIDITE 14-2 ALCOAT		<i>Jauger</i>		
		FINISH & SPEC. NO.	ELEC. DES. APP.	MECH. DES. APP.	MS 3821 Φ	

.081 THK
STOCK SIZE

THE TECHNICAL MATERIEL CORP.
MAMARONECK, NEW YORK

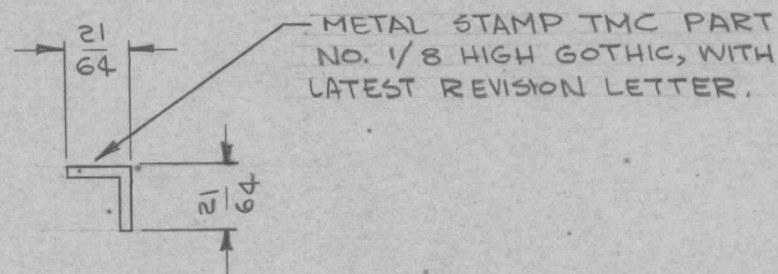
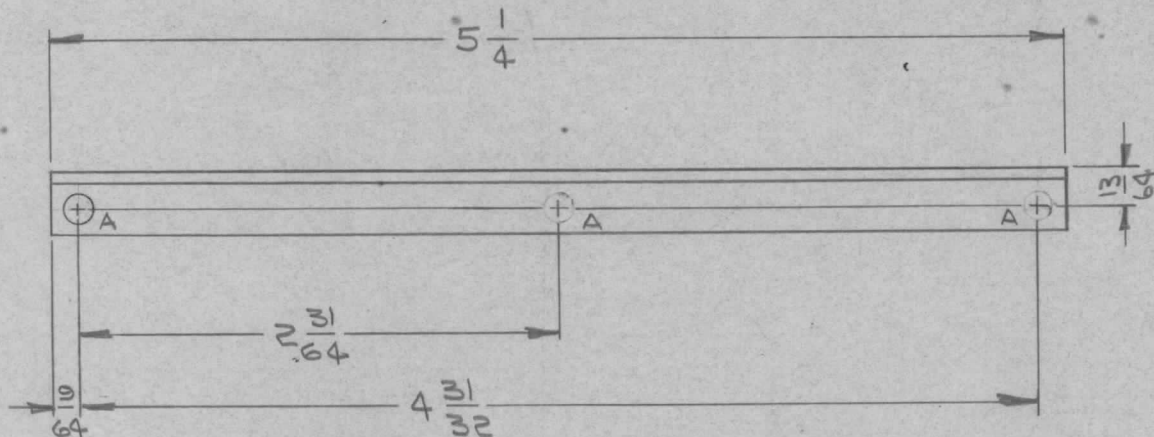
ALUMINUM

PLATE, COVER

MATERIAL

HOLE	DESCRIPTION	REQ.
A	1/8 DIA.	3

REQ. PER UNIT	USED ON			MS3827 Ø
	MODEL	ASS'Y. NO.	DATE	
10	PFCB-1		9-18-64	



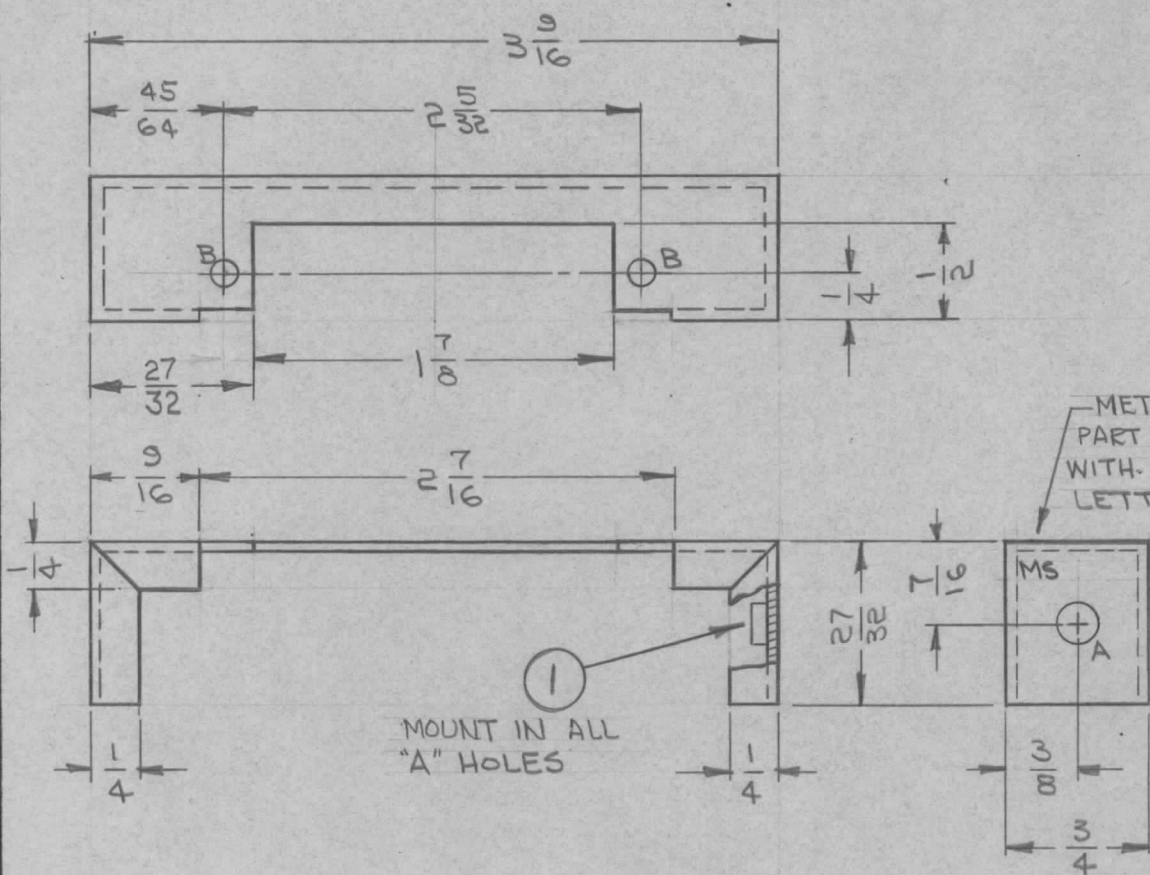
UNLESS OTHERWISE SPECIFIED:

1. USE MATERIAL THICKNESS FOR MAXIMUM RADIUS ON ALL BENDS
2. ALL ANGULAR BENDS 90 DEGREES
3. REMOVE ALL BURRS AND SHARP EDGES

REQ. ITEM	PART NO.	GELLMAN	DESCRIPTION	SYMBOL
	.064		THE TECHNICAL MATERIEL CORP. MAMARONECK, NEW YORK	
	STOCK SIZE		STIFFENER	
	ALUMINUM		PRINTED CIRCUIT CARD	
	MATERIAL			
Ø	ORIGINAL RELEASE FOR PRODUCTION	9.25.64	Ø	9.2.64
XI	REDRAWN & REDESIGNED	8.19.64	XI	8.19.64
SYM	DESCRIPTION	DATE	CH. NO.	DRAFTS
UNLESS OTHERWISE SPECIFIED DIMENSIONS ARE IN INCHES AND INCLUDE CHEMICALLY APPLIED OR PLATED FINISHES		SCALE 1:1		
DECIMALS .X ± .05 .XX ± .01 .XXX ± .005	FRACTIONS ± 1/64 ANGLES ± 0° 30'	TOLERANCES	CODE A	
5052-H32	—4—	<i>G. Lean</i>	<i>J.R.S. @</i>	<i>R.C.</i>
TYPE & TEMPER	HEAT TREAT. SPEC.	DRAWN	CHECKED	FINAL APPROVAL
5404 - YELLOW IRIDITE		<i>K</i>		MS3827 Ø
FINISH & SPEC. NO.	ELEC. DES. APP.	MECH. DES. APP.		

REQ. PER UNIT	USED ON			MS3835 Ø
	MODEL	ASS'Y. NO.	DATE	
	PFCB-1		9-21-64	

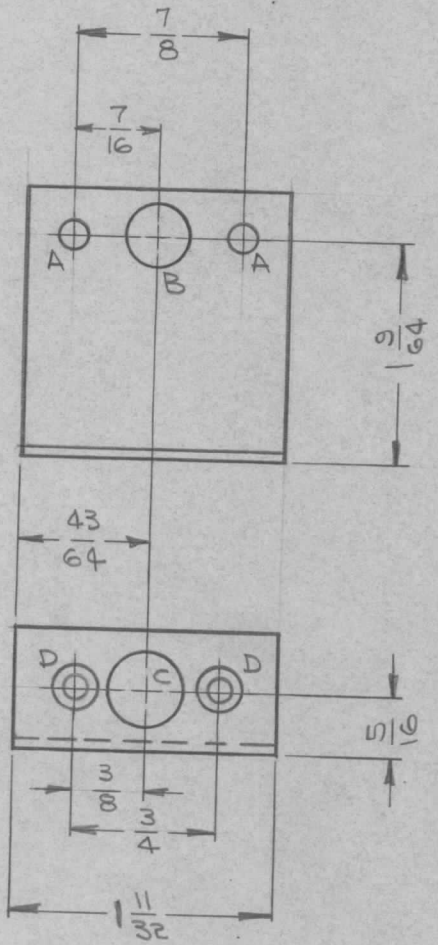
HOLE	DESCRIPTION	REQ.
A	.191-.194 DIA	2
B	1/8 DIA	2



- UNLESS OTHERWISE SPECIFIED:
1. USE MATERIAL THICKNESS FOR MAXIMUM RADIUS ON ALL BENDS
 2. ALL ANGULAR BENDS 90 DEGREES
 3. REMOVE ALL BURRS AND SHARP EDGES
 4. MOUNT INSERTS AFTER FINISHING

2	1	NT129-632-4	NUT, PLAIN SPLINE TYPE		A
REQ. ITEM	PART NO.		DESCRIPTION		SYMBOL
Ø	ORIGINAL RELEASE FOR PRODUCTION		9-25-64	Ø	J.L.
X	EXPER. RELEASE		9-21-64	X	Ben
SYMBOL	DESCRIPTION		DATE	CH. NO.	DRAFTS
UNLESS OTHERWISE SPECIFIED DIMENSIONS ARE IN INCHES AND INCLUDE CHEMICALLY APPLIED OR PLATED FINISHES			SCALE 1:1		
DECIMALS .X ± .05 .XX ± .01 .XXX ± .005	TOLERANCES		FRACTIONS ± 1/64 ANGLES ± 0° 30'	CODE A	
.064		STOCK SIZE			
ALUMINUM		MATERIAL			
5052-H32		TYPE & TEMPER			
5404 YELLOW IRIDITE		FINISH & SPEC. NO.			
THE TECHNICAL MATERIEL CORP. MAMARONECK, NEW YORK		BRACKET, MOUNTING CONNECTOR			
DRAWN		CHECKED		FINAL APPROVAL	
ELEC. DES. APP.		MECH. DES. APP.		MS3835 Ø	

REQ. PER UNIT	USED ON			MS3836 Ø
	MODEL	ASS'Y. NO.	DATE	
1	PFCB-1		9-21-64	



METAL STAMP
 TMC PART NO. 1/8 HIGH
 GOTHIC, WITH LATEST
 REVISION LETTER.

HOLE	DESCRIPTION	REQ.
A	9/64 DIA.	2
B	5/16 DIA.	1
C	3/8 DIA.	1
D	.104 DIA, C'SINK 82° TO .204 DIA.	2

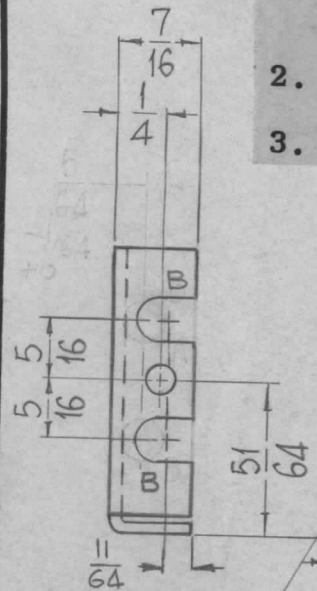
- UNLESS OTHERWISE SPECIFIED:
1. USE MATERIAL THICKNESS FOR MAXIMUM RADIUS ON ALL BENDS
 2. ALL ANGULAR BENDS 90 DEGREES
 3. REMOVE ALL BURRS AND SHARP EDGES

						REQ. ITEM	PART NO.	GELLMAN	DESCRIPTION	SYMBOL	
Ø	ORIGINAL RELEASE FOR PRODUCTION	9-25-64	Ø	2.5.			.064		THE TECHNICAL MATERIEL CORP. MAMARONECK, NEW YORK		
X	EXPER. RELEASE	9-21-64	X	<i>[Signature]</i>			ALUMINUM		BRACKET, MOUNTING COVER		
SYM	DESCRIPTION	DATE	CH. NO.	DRAFTS	CHECKER	ENG. APP.	MATERIAL		BOTTOM COVER		
UNLESS OTHERWISE SPECIFIED DIMENSIONS ARE IN INCHES AND INCLUDE CHEMICALLY APPLIED OR PLATED FINISHES		SCALE		1:1			5052-H32	<i>[Signature]</i>	<i>[Signature]</i>	<i>[Signature]</i>	
DECIMALS .X ± .05 .XX ± .01 .XXX ± .005	TOLERANCES	FRACTIONS ± 1/64 ANGLES ± 0° 30'	CODE	A			TYPE & TEMPER	HEAT TREAT. SPEC.	DRAWN	CHECKED	FINAL APPROVAL
							5404 YELLOW IRIDITE		<i>[Signature]</i>		MS3836 Ø
							FINISH & SPEC. NO.	ELEC. DES. APP.	MECH. DES. APP.		

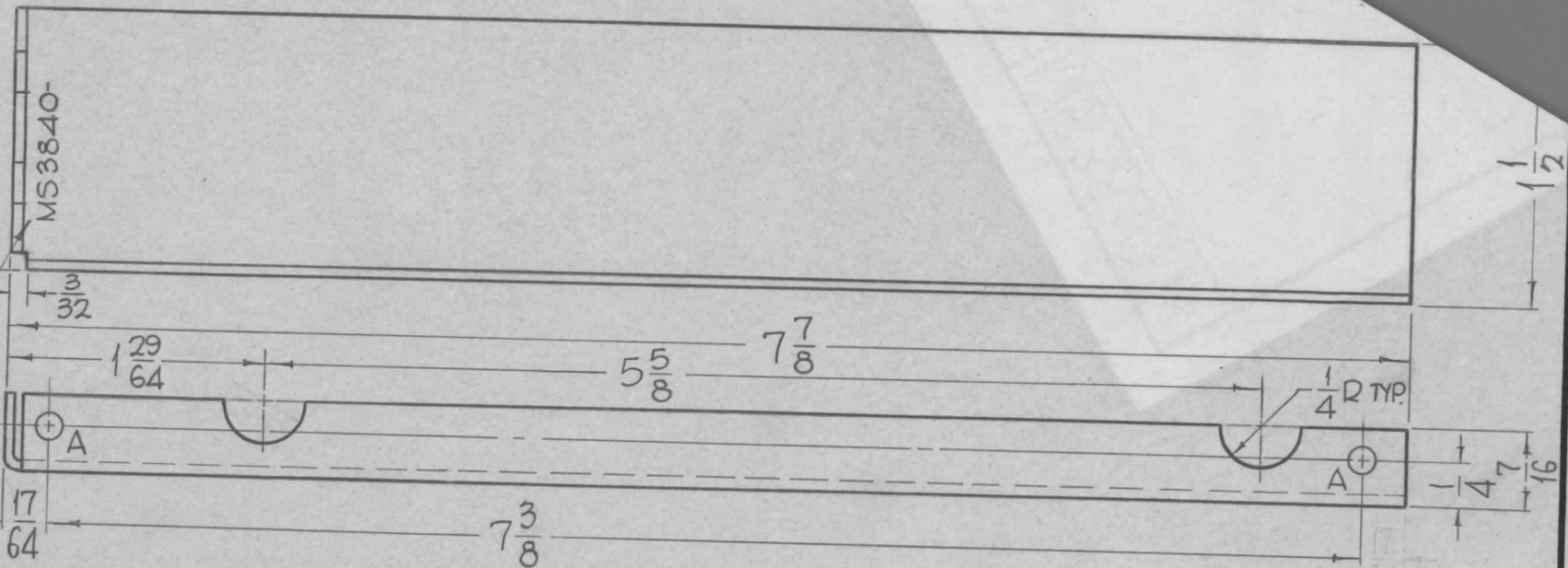
UNLESS OTHERWISE SPECIFIED:

1. USE MATERIAL THICKNESS FOR MAXIMUM RADIUS ON ALL BENDS.
2. ALL ANGULAR BENDS 90°.
3. REMOVE ALL BURRS AND SHARP EDGES.

REQ. PER UNIT	MOD.
1EA	STR-1A
1EA	STE



METAL STAMP
TMC PART NO.
1/8 HIGH GOTHIC
WITH LATEST
REVISION LETTER.



HOLES	REQ	REQ
A- 3/16 DIA.	3	3
B- 7/32 DIA. x 9/32 SLOT	2	2

Ø	ORIGINAL RELEASE FOR PRODUCTION	9-24-64	Ø	9L				REQ. ITEM	PART NO.	T. AALTONEN	DESCRIPTION	SYMBOL
X1	'B' HOLES WERE 7/32 DIA	6-4-64	#	GDL				.064 THICK		THE TECHNICAL MATERIEL CORP. MAMARONECK, NEW YORK		
X	EXPERIMENTAL RELEASE	5-22-64	#	B.DL				STOCK SIZE		BRACKET, UNIT GUIDE		
								ALUMINUM		RIGHT SIDE		
SYM	DESCRIPTION	DATE	CH. NO.	DRAFTS	CHECKER	ENG. APP.		MATERIAL		John C. Biele	BK @	KAC
UNLESS OTHERWISE SPECIFIED DIMENSIONS ARE IN INCHES AND INCLUDE CHEMICALLY APPLIED OR PLATED FINISHES		SCALE		1:1				5052 H32				
DECIMALS .X ± .05 .XX ± .01 .XXX ± .005	TOLERANCES	FRACTIONS ± 1/64 ANGLES ± 0° 30'	CODE A					TYPE & TEMPER	HEAT TREAT. SPEC.	DRAWN	CHECKED	FINAL APPROVAL
								S404-IRIDITE, 14-2 ALCOAT		MSA		MS3840 Ø
								FINISH & SPEC. NO.	ELEC. DES. APP.	MECH. DES. APP.		

UNLESS OTHERWISE SPECIFIED:

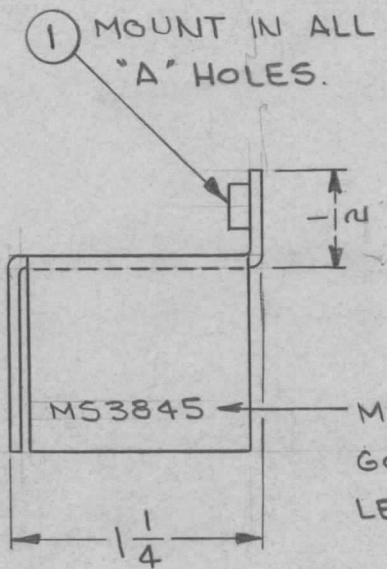
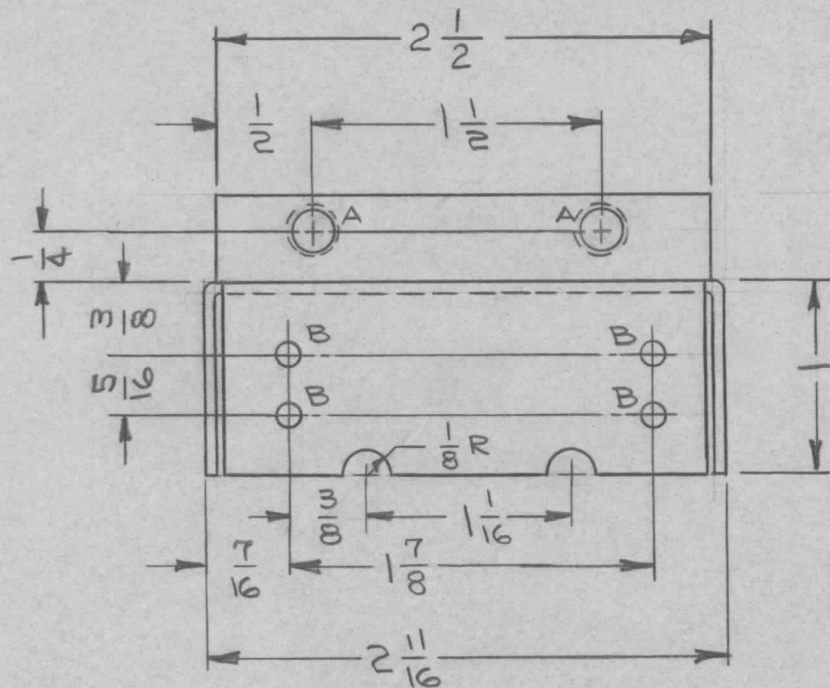
1. USE MATERIAL THICKNESS FOR MAXIMUM RADIUS ON ALL BENDS.
2. ALL ANGULAR BENDS 90°.
3. REMOVE ALL BURRS AND SHARP EDGES.
4. MOUNT INSERTS AFTER FINISHING.

REQ. PER UNIT	USED ON		
	MODEL	ASS'Y. NO.	DATE
1	RAK-31A	A3666	6-4-64
1	RAK-31C	A3666	6-4-64

MS3845 A

HOLES

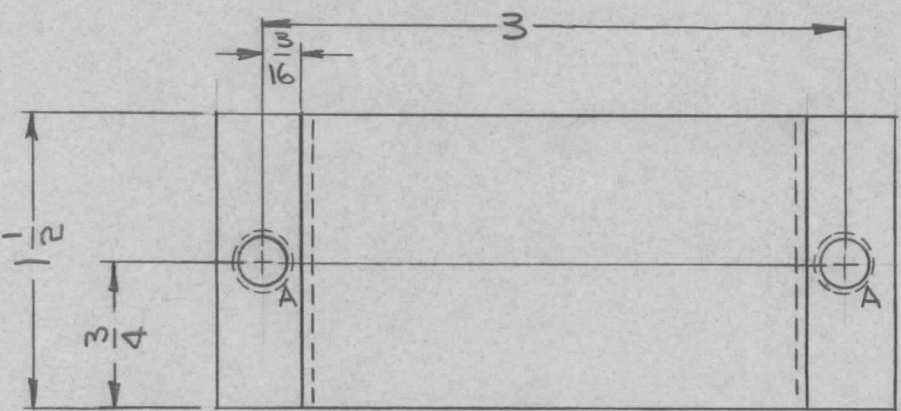
- A - .221 - .224 DIA, 2 REQ.
 B - .113 DIA, 4 REQ.



METAL STAMP TMC PART NO 1/8 HIGH GOTHIC WITH LATEST REVISION LETTER.

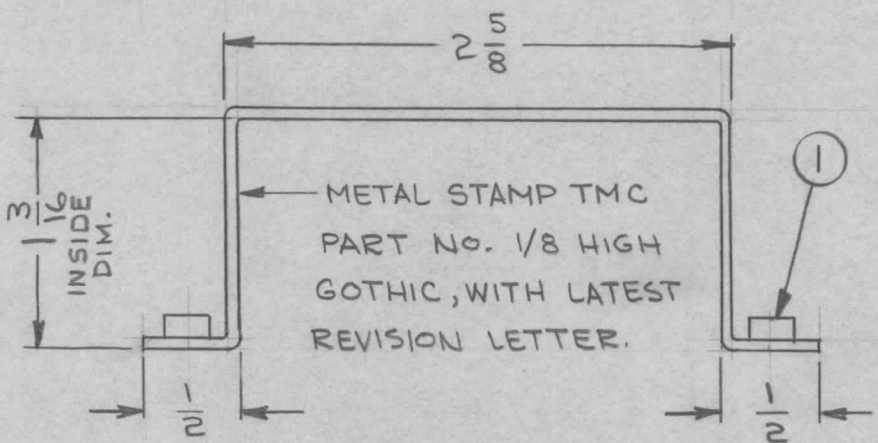
A	SIDE VIEW; 1/4 DIM. RELOCATED.	3-4-65	13640	g.f.	<i>[Signature]</i>	2	1	NT129-832-4	NUT, ROUND, SWAGE TYPE	A	
Ø	ORIGINAL RELEASE FOR PRODUCTION	6/16/64	Ø	A.M.	<i>[Signature]</i>	REQ. ITEM	PART NO.	STURMER	DESCRIPTION	SYMBOL	
XI	2 1/2 DIM. ADDED ITEM - WAS NT129-832-5 TITLE WAS CON., CHAS, BLOW	6/15/64	XI	AM	@	.064 THK. STOCK SIZE		THE TECHNICAL MATERIEL CORP. MAMARONECK, NEW YORK			
X	EXPER. RELEASE	6-5-64	1	<i>[Signature]</i>		ALUMINUM MATERIAL		CHASSIS, BLOWER CONNECTOR			
SYM	DESCRIPTION	DATE	CH. NO.	DRAFTS	CHECKER	ENG. APP.	5052-H32	<i>[Signature]</i>	@	<i>[Signature]</i>	
UNLESS OTHERWISE SPECIFIED DIMENSIONS ARE IN INCHES AND INCLUDE CHEMICALLY APPLIED OR PLATED FINISHES		SCALE		1:1							
DECIMALS	TOLERANCES	FRACTIONS	CODE								
.X ± .05 .XX ± .01 .XXX ± .005		± 1/64 ANGLES ± 0° 30'	A	<i>[Signature]</i>							
		5404 YELLOW IRIDITE		TYPE & TEMPER		HEAT TREAT. SPEC.		DRAWN		CHECKED	FINAL APPROVAL
		FINISH & SPEC. NO.		ELEC. DES. APP.		MECH. DES. APP.		6-16-64			
		MS3845		A							

REQ. PER UNIT	USED ON			MS3846 ∅
	MODEL	ASS'Y. NO.	DATE	
1	RAK-31A	A3666	6-5-64	
1	RAK-31C	A3666	6-5-64	



HOLE
A - .221" - .224" DIA. 2 REQ.

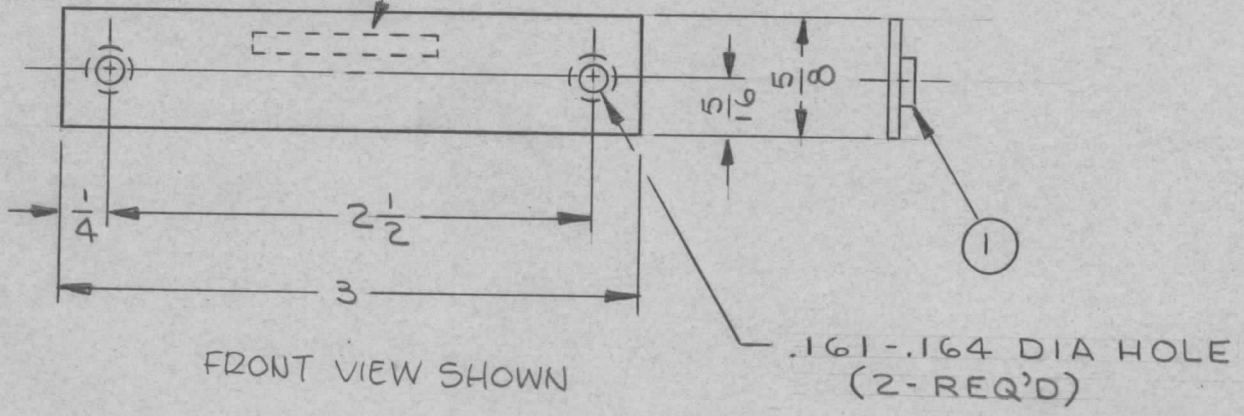
- UNLESS OTHERWISE SPECIFIED:
1. USE MATERIAL THICKNESS FOR MAXIMUM RADIUS ON ALL BENDS.
 2. ALL ANGULAR BENDS 90°.
 3. REMOVE ALL BURRS AND SHARP EDGES.
 4. MOUNT INSERTS AFTER FINISHING.



2	1	NT129-832-4	NUT, ROUND, SWAGE TYPE			A
∅	ORIGINAL RELEASE FOR PRODUCTION		6/16/64	∅	A.M.	
XI	ITEM WAS NT129-1032-4 A HOLE WAS .250-.253 DIA. 1 3/16 DIM RELOCATED		6/15/64	XI	A.M.	
X	EXPER. RELEASE		6-5-64	1		
SYM	DESCRIPTION	DATE	CH. NO.	DRAFTS	CHECKER	ENG. APP.
UNLESS OTHERWISE SPECIFIED DIMENSIONS ARE IN INCHES AND INCLUDE CHEMICALLY APPLIED OR PLATED FINISHES		SCALE		1:1		
DECIMALS .X ± .05 .XX ± .01 .XXX ± .005	TOLERANCES	FRACTIONS ± 1/64 ANGLES ± 0° 30'	CODE A			
.064 THK STOCK SIZE		ALUMINUM		5052-H32		
THE TECHNICAL MATERIEL CORP. MAMARONECK. NEW YORK		BRACKET, MOUNTING, CAPACITOR		TYPE & TEMPER		
MATERIAL		S404 YELLOW IRIDITE		HEAT TREAT. SPEC.		
FINISH & SPEC. NO.		5052-H32		DRAWN		
ELEC. DES. APP.		MECH. DES. APP.		CHECKED		
M53846 ∅		6-16-64		FINAL APPROVAL		

REQ. PER UNIT	USED ON			MS3854
	MODEL	ASS'Y. NO.	DATE	
1	RTTD-1	A3705	6-8-64	

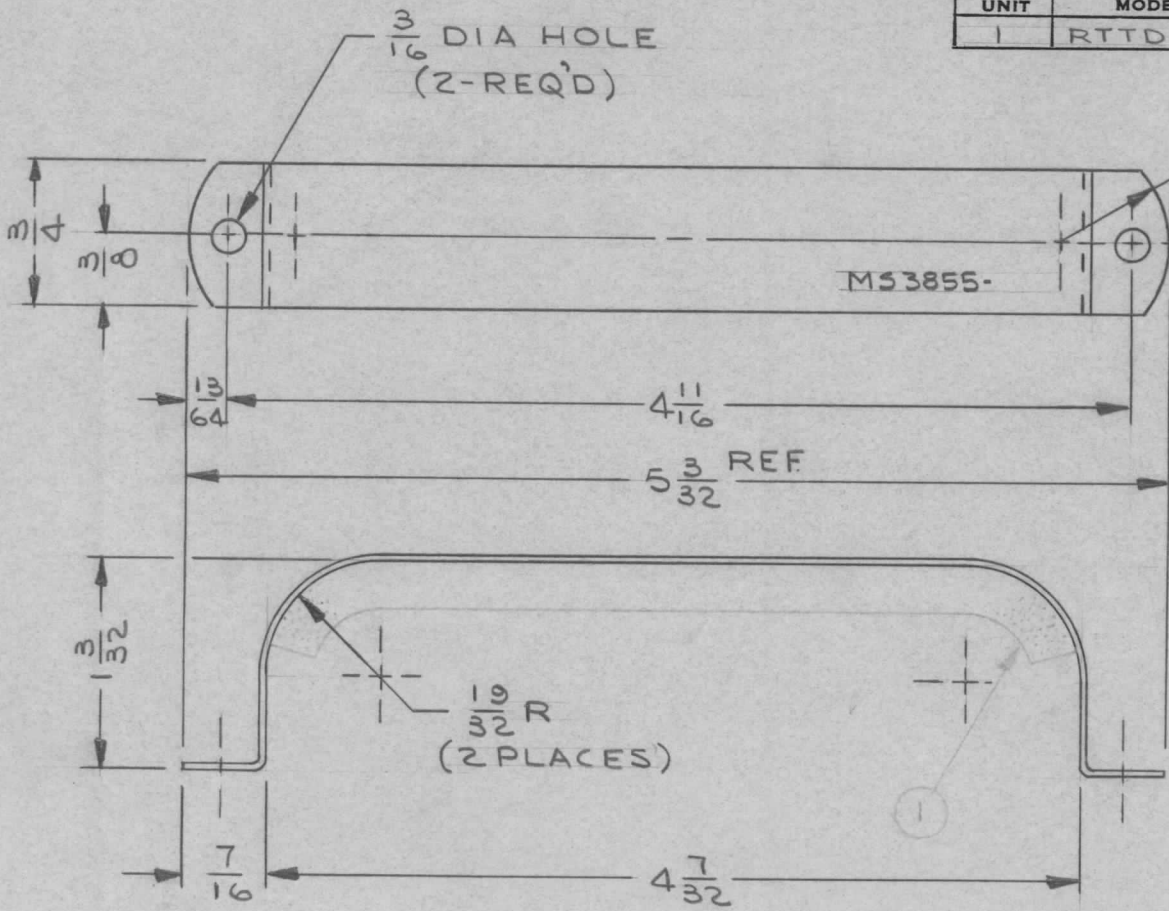
METAL STAMP TMC PART NO. MS 3854
1/8 HIGH GOTHIC. (ON REAR)



FRONT VIEW SHOWN

2	1	NT-129-440-4	NUT, ROUND, SWAGE TYPE		
REQ. ITEM	PART NO.		F.E. EATON DESCRIPTION		SYMBOL
	.062 THK		THE TECHNICAL MATERIEL CORP.		
	STOCK SIZE		MAMARONECK, NEW YORK		
	ALUMINUM		COVER-CONNECTOR CUTOUT		
SYM		DESCRIPTION		DATE	CH. NO.
		UNLESS OTHERWISE SPECIFIED DIMENSIONS ARE IN INCHES AND INCLUDE CHEMICALLY APPLIED OR PLATED FINISHES		SCALE	1:1
		ORIGINAL RELEASE FOR PRODUCTION		2/16/65	JL JCB
X		EXPERIMENTAL RELEASE		6/8/64	JL J.M
		MATERIAL		5052-H32	J. LESHINSKI
		TYPE & TEMPER		HEAT TREAT. SPEC.	DRAWN
		YELLOW IRRIDITE PER S404			W. JORDAN
		FINISH & SPEC. NO.		ELEC. DES. APP.	MECH. DES. APP.
				2/8/65	2/8/65
				MS3854	

REQ. PER UNIT	USED ON			MS 3855 \emptyset
	MODEL	ASS'Y. NO.	DATE	
1	RTTD-1	A3711	6-8-64	



$\frac{9}{16}$ R (2-PLACES)

METAL STAMP TMC P/N 1/8 HIGH
GOTHIC W/LATEST REVISION
LETTER

- UNLESS OTHERWISE SPECIFIED:
1. USE MATERIAL THICKNESS FOR MAXIMUM RADIUS ON ALL BENDS.
 2. ALL ANGULAR BENDS 90°.
 3. REMOVE ALL BURRS AND SHARP EDGES.

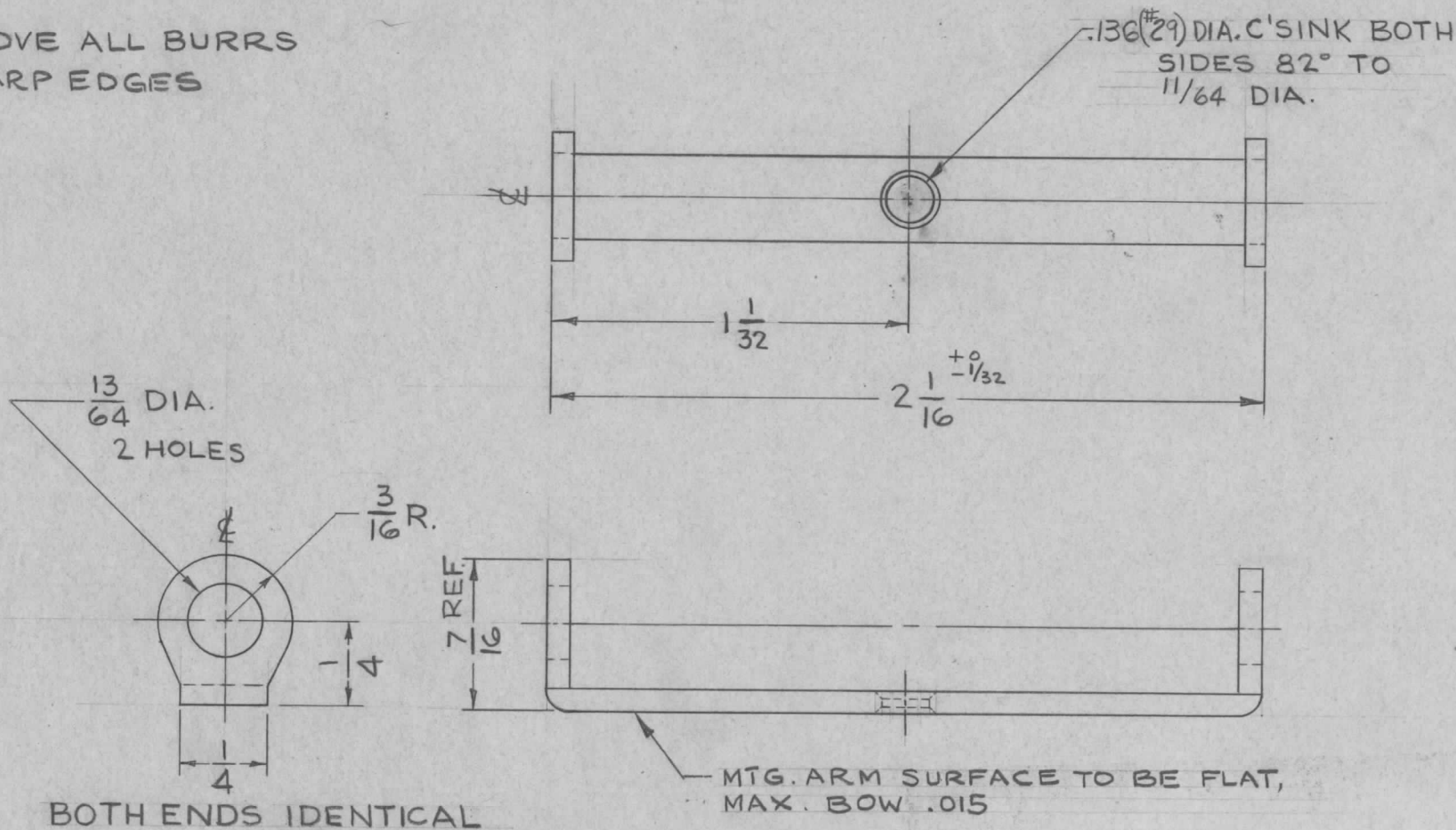
4	1	DELETED	TAPE, UP/HAVE		
REQ. ITEM	PART NO.	F.E. EATON	DESCRIPTION	SYMBOL	
	# 20 (.0359) GA	THE TECHNICAL MATERIEL CORP. MAMARONECK, NEW YORK			
	STEEL	RETAINER, CAPACITOR			
	COLD ROLLED	J. LESHINSKI	J.C.B.	R.T.C.	
	TYPE & TEMPER	HEAT TREAT. SPEC.	DRAWN	CHECKED	FINAL APPROVAL
	CADMIUM PLATE PER S105		W. JORDAN	W. JORDAN	MS 3855 \emptyset
	FINISH & SPEC. NO.	ELEC. DES. APP.	MECH. DES. APP.		

Ø	ORIGINAL RELEASE FOR PRODUCTION	2/10/65	Ø	J.C.B.	J.C.B.	
XI	ITEM DELETED WAS TAMI-2-G-4.75-G	12-21-64	XI	Plan	J.M.	
X	EXPERIMENTAL RELEASE	6/8/64	X	JL	J.M.	
SYM	DESCRIPTION	DATE	CH. NO.	DRAFTS	CHECKER	ENG. APP.
UNLESS OTHERWISE SPECIFIED DIMENSIONS ARE IN INCHES AND INCLUDE CHEMICALLY APPLIED OR PLATED FINISHES		SCALE 1:1				
DECIMALS .X ± .05 .XX ± .01 .XXX ± .005	TOLERANCES	FRACTIONS ± 1/64 ANGLES ± 0° 30'	CODE A			

REQ. PER UNIT	USED ON		
	MODEL	ASS'Y. NO.	DATE
1	HFIR-1		5/26/64

MS 3856 \emptyset

NOTE:
REMOVE ALL BURRS
& SHARP EDGES



BOTH ENDS IDENTICAL

REQ.	ITEM	PART NO.	EATON	DESCRIPTION	SYMBOL
		.063 THK		THE TECHNICAL MATERIEL CORP. MAMARONECK, NEW YORK	
		STAINLESS STEEL		ARM, ACTUATOR, SWITCH	
		303		AFC SWITCH	
		CLEAR PASSIVATE			
			TAR	@ 1-29-61	J. E. Eaton
			JEE	BB	MS 3856 \emptyset

UNLESS OTHERWISE SPECIFIED
DIMENSIONS ARE IN INCHES AND INCLUDE
CHEMICALLY APPLIED OR PLATED FINISHES

DECIMALS
.X \pm .05
.XX \pm .01
.XXX \pm .005

FRACTIONS
 \pm 1/64
ANGLES
 \pm 0° 30'

TOLERANCES

CODE
A

SCALE
2:1

DATE
4/5/65

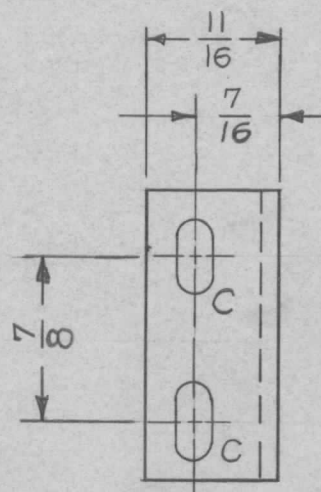
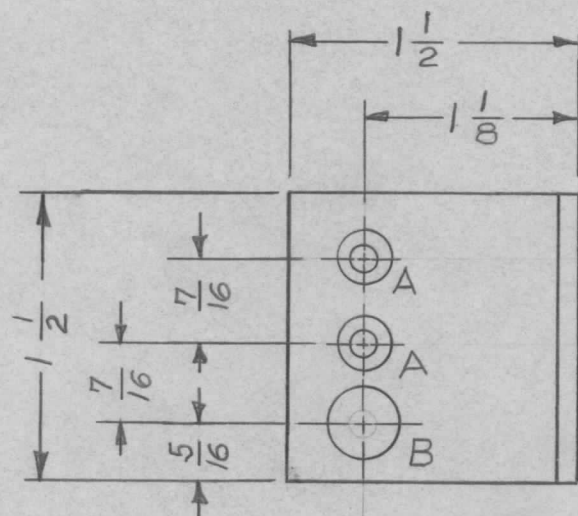
CH. NO.
#

DRAFTS
@

CHECKER
J. MUNFORD

ENG. APP.

TMC PART NO.	DESCRIPTION	REQ. PER UNIT	USED ON			MS3868 Ø
			MODEL	ASS'Y. NO.	DATE	
MS3868-1	AS SHOWN (LEFT HAND)	1	200K	AX 394	6-23-64	
MS3868-2	OPPOSITE (RIGHT HAND)					

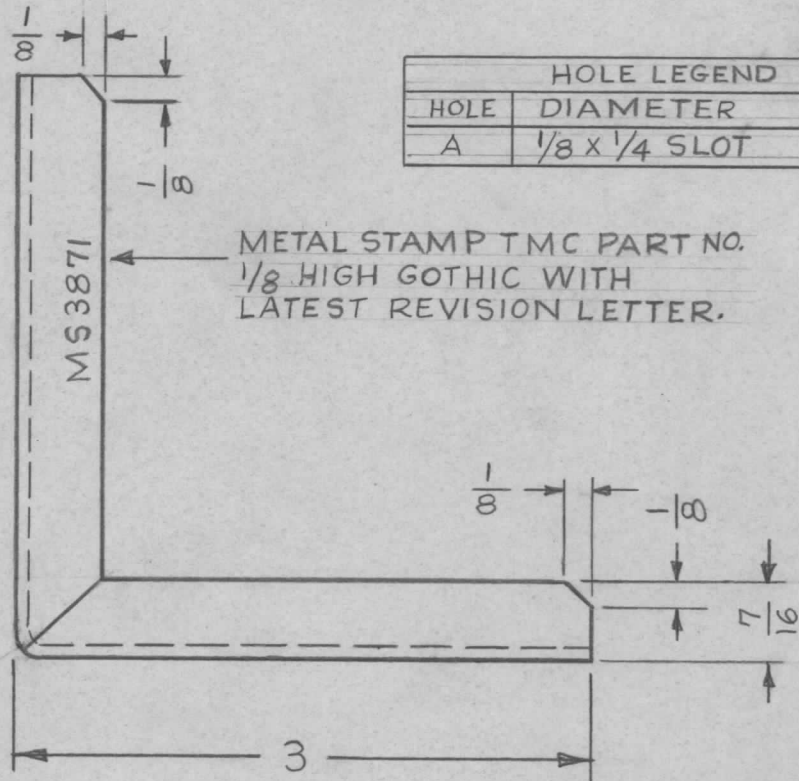
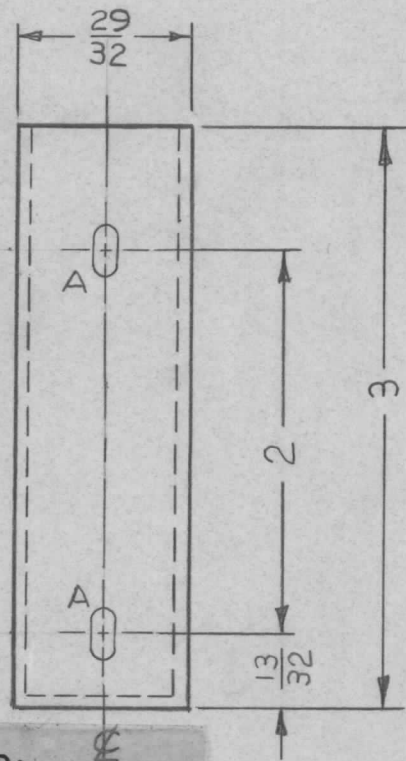


HOLE LEGEND		
HOLE	DIAMETER	REQD
A	.144 DIA.-CSK 82°.284	2
B	3/8 DIA.	1
C	3/16 x 3/8 SLOT	2

UNLESS OTHERWISE SPECIFIED
 1. USE MATERIAL THICKNESS ON ALL BENDS FOR MAX RADIUS
 2. REMOVE ALL BURRS AND SHARP EDGES, BENDS 90°
 3. ALL ANGULAR BENDS 90°

SYM	DESCRIPTION	DATE	CH. NO.	DRAFTS	CHECKER	ENG. APP.	REQ. ITEM	PART NO.	BUDETTI	DESCRIPTION	SYMBOL	
Ø	ORIGINAL RELEASE FOR PRODUCTION	7/1/64	Ø	A.M.			.090 THK. STOCK SIZE		THE TECHNICAL MATERIEL CORP. MAMARONECK. NEW YORK			
X	EXPERIMENTAL RELEASE	6-23-64	X	A.M.	@		ALUMINUM		BRACKET, ANGLE SWITCH MOUNTING			
	UNLESS OTHERWISE SPECIFIED DIMENSIONS ARE IN INCHES AND INCLUDE CHEMICALLY APPLIED OR PLATED FINISHES	SCALE	1:1				5052-H32	---	A. MARINO	@		
DECIMALS .X ± .05 .XX ± .01 .XXX ± .005	TOLERANCES	FRACTIONS ± 1/64 ANGLES ± 0° 30'	CODE A	TYPE & TEMPER 5404-IRIDITE 14-2 AL-COAT		HEAT TREAT. SPEC.	DRAWN	CHECKED	FINAL APPROVAL			
				FINISH & SPEC. NO.			ELEC. DES. APP.	MECH. DES. APP.	MS3868 Ø			

REQ. PER UNIT	USED ON			MS3871	0
	MODEL	ASS'Y. NO.	DATE		
1	VLR-1		6-18-64		



HOLE LEGEND		
HOLE	DIAMETER	REQ'D
A	1/8 x 1/4 SLOT	2

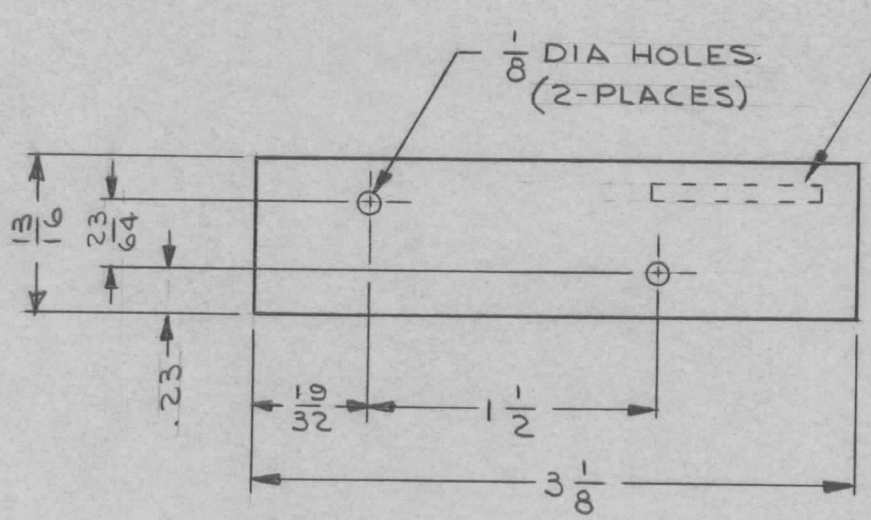
METAL STAMP TMC PART NO. 1/8 HIGH GOTHIC WITH LATEST REVISION LETTER.

UNLESS OTHERWISE SPECIFIED:

1. USE MATERIAL THICKNESS FOR MAXIMUM RADIUS ON ALL BENDS.
2. ALL ANGULAR BENDS 90°.
3. REMOVE ALL BURRS AND SHARP EDGES.

						REQ. ITEM	PART NO.	M. GELLMAN	DESCRIPTION	SYMBOL	
							.064 THK.		THE TECHNICAL MATERIEL CORP.		
							STOCK SIZE		MAMARONECK, NEW YORK		
○	ORIG. RELEASE FOR PROD.	8-18-64	○	SRG			ALUMINUM		BRACKET, SUPPORT,		
X	EXPERIMENTAL RELEASE	6-18-64	X	A.M.			MATERIAL		MODULE		
SYM	DESCRIPTION	DATE	CH. NO.	DRAFTS	CHECKER	ENG. APP.	5052-H32	A. MARINO			
UNLESS OTHERWISE SPECIFIED DIMENSIONS ARE IN INCHES AND INCLUDE CHEMICALLY APPLIED OR PLATED FINISHES		SCALE	1:1				TYPE & TEMPER	HEAT TREAT. SPEC.	DRAWN	CHECKED	FINAL APPROVAL
DECIMALS .X ± .05 .XX ± .01 .XXX ± .005	TOLERANCES	FRACTIONS ± 1/64 ANGLES ± 0° 30'	CODE	A			S404-IRIDITE 14-2 AL-COAT				MS3871
						FINISH & SPEC. NO.	ELEC. DES. APP.	MECH. DES. APP.		0	

REQ. PER UNIT	USED ON			MS 3874 \emptyset
	MODEL	ASS'Y. NO.	DATE	
1	RTTD-1	A3704	6-18-64	

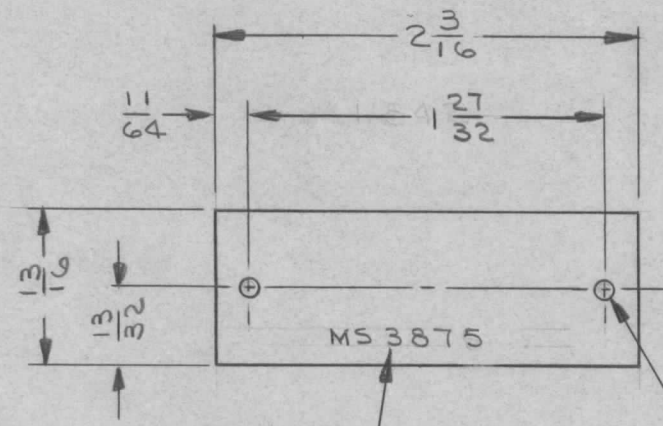


METAL STAMP TMC PART NO.
 1/8 HIGH GOTHIC (ON REAR)
 WITH LATEST REVISION LETTER

FRONT VIEW SHOWN

REQ.	ITEM	PART NO.	F.E. EATON DESCRIPTION				SYMBOL
		.062 THK	THE TECHNICAL MATERIEL CORP.				
		STOCK SIZE	MAMARONECK, NEW YORK				
\emptyset	ORIGINAL RELEASE FOR PRODUCTION	9/22/65	\emptyset	JL			
X	EXPERIMENTAL REL.	6-18-64	X	JL	JM		
		ALUMINUM	COVER - RELAY CUTOUT				
SYM	DESCRIPTION	DATE	CH. NO.	DRAFTS	CHECKER	ENG. APP.	
UNLESS OTHERWISE SPECIFIED DIMENSIONS ARE IN INCHES AND INCLUDE CHEMICALLY APPLIED OR PLATED FINISHES		SCALE					
		1:1					
DECIMALS .X \pm .05 .XX \pm .01 .XXX \pm .005	TOLERANCES	FRACTIONS \pm 1/64 ANGLES \pm 0° 30'	CODE A				
		5052-H32	TYPE & TEMPER		HEAT TREAT. SPEC.	DRAWN	CHECKED
		YELLOW IRIDITE PER S404					
		FINISH & SPEC. NO.	ELEC. DES. APP.		MECH. DES. APP.		
					MS 3874 \emptyset		

REQ. PER UNIT	USED ON			MS 3875 \emptyset
	MODEL	ASS'Y. NO.	DATE	
1	RTTD-1	A3703	6/29/64	

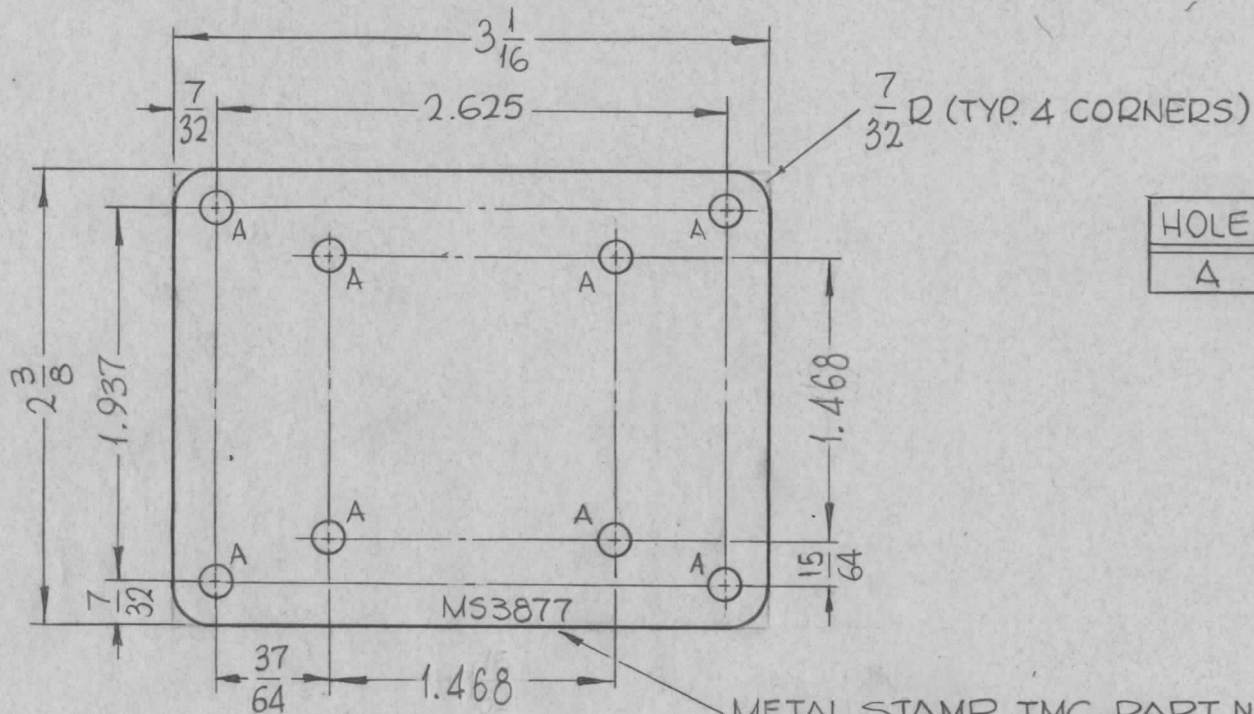


$\frac{1}{8}$ DIA HOLE (2 PLACES)
 DRILL & TAP
 2-PLACES

METAL STAMP TMC PART NO.
 1/8 HIGH GOTHIC, WITH
 LATEST REVISION LETTER

							REQ. ITEM	PART NO.	F. E. EATON DESCRIPTION	SYMBOL	
\emptyset	ORIGINAL RELEASE FOR PRODUCTION	2.10.65	\emptyset	22	JCB			1/16 THK	THE TECHNICAL MATERIEL CORP. MAMARONECK. NEW YORK	COVER - SERVO CUTOUT	
X1	MAT. WAS 1/8 THK	8/14/64	X1	file	Jm			STOCK SIZE			
X	EXPERIMENTAL REL.	6/29/64	X	JL	Jm			ALUMINUM			
SYM	DESCRIPTION	DATE	CH. NO.	DRAFTS	CHECKER	ENG. APP.	MATERIAL				
UNLESS OTHERWISE SPECIFIED DIMENSIONS ARE IN INCHES AND INCLUDE CHEMICALLY APPLIED OR PLATED FINISHES		SCALE		1:1			5052-H32		J. LESHINSKI	JCB	RJC
DECIMALS .X \pm .05 .XX \pm .01 .XXX \pm .005	TOLERANCES	FRACTIONS \pm 1/64 ANGLES \pm 0° 30'	CODE A				TYPE & TEMPER	HEAT TREAT. SPEC.	DRAWN	CHECKED	FINAL APPROVAL
							YELLOW IRIDITE PER S404		W. JORDAN 2/8/65	2/8/65	MS 3875 \emptyset
							FINISH & SPEC. NO.	ELEC. DES. APP.	MECH. DES. APP.		

REQ. PER UNIT	USED ON			MS3877 Ø
	MODEL	ASS'Y. NO.	DATE	
1	HFSR-1		6-30-64	



HOLE	DESCRIPTION	REQ.
A	5/32 DIA.	8

METAL STAMP TMC PART NO.
1/8 HIGH GOTHIC W/LATEST REV.
LETTER,

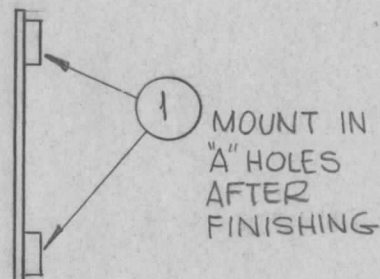
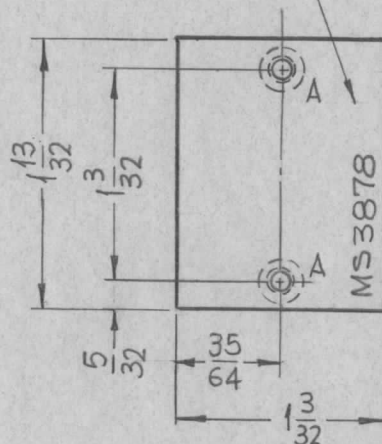
SYM	DESCRIPTION	DATE	CH. NO.	DRAFTS	CHECKER	ENG. APP.	REQ. ITEM	PART NO.	EATON	DESCRIPTION	SYMBOL		
Ø	ORIGINAL RELEASE FOR PRODUCTION	3-23-65	13649	RL			.081 THICK		THE TECHNICAL MATERIEL CORP. MAMARONECK, NEW YORK				
XI	7/32 R ADDED, 1.468 DIM WAS 1-15/32 (2 PLACES)	2/23/65	AA	JZ			ALUMINUM		PLATE, MOUNTING (SHALLCROSS SWITCH)				
UNLESS OTHERWISE SPECIFIED DIMENSIONS ARE IN INCHES AND INCLUDE CHEMICALLY APPLIED OR PLATED FINISHES							SCALE 1:1		5052-H32	SRG	JCB	MMay 3/23/65	
DECIMALS .X ± .05 .XX ± .01 .XXX ± .005							FRACTIONS ± 1/64 ANGLES ± 0° 30'		TOLERANCES	CODE A	TYPE & TEMPER HEAT TREAT. SPEC.		FINISH & SPEC. NO.
							S404 YEL. IRIDITE		ELEC. DES. APP. MECH. DES. APP.		MS3877 Ø		

REQ. PER UNIT	USED ON		
	MODEL	ASS'Y. NO.	DATE
1	HFIR-1		6-30-64
1	HFS-1		6-30-64

MS3878 \emptyset

METAL STAMP TMC PART NO.
1/8 HIGH GOTHIC W/LATEST
REV. LETTER.

HOLE	DESCRIPTION	REQ'D
A	.161-.164 DIA.	2

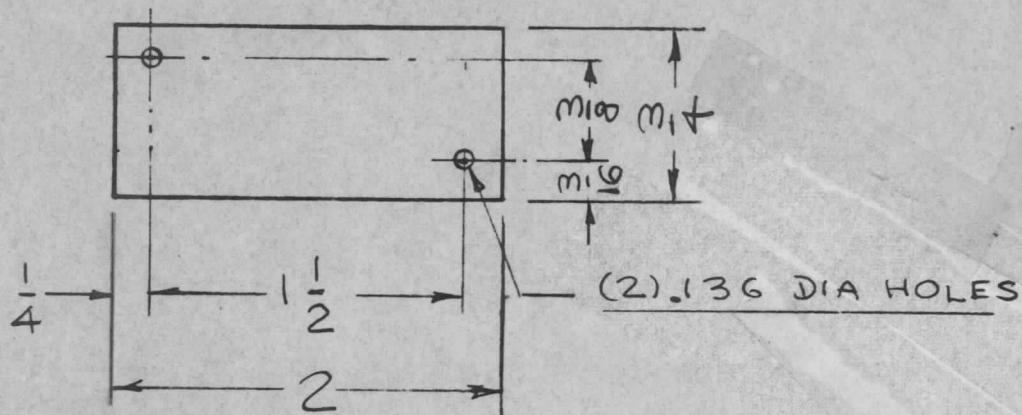


NOTE:

REMOVE ALL BURRS
& SHARP EDGES

							2	1	NT129-440-3	NUT, PLAIN, SPLINE	
							REQ. ITEM		PART NO.	EATON	DESCRIPTION
									.051 THICK	THE TECHNICAL MATERIEL CORP. MAMARONECK, NEW YORK	
									STOCK SIZE	PLATE, COVER	
\emptyset	ORIGINAL RELEASE	11/165							ALUMINUM		
SYM	DESCRIPTION	DATE	CH. NO.	DRAFTS	CHECKER	ENG. APP.			MATERIAL		
UNLESS OTHERWISE SPECIFIED DIMENSIONS ARE IN INCHES AND INCLUDE CHEMICALLY APPLIED OR PLATED FINISHES		SCALE							5052-H32	SRG	
		1:1							TYPE & TEMPER	HEAT TREAT. SPEC.	DRAWN
DECIMALS .X \pm .05 .XX \pm .01 .XXX \pm .005		FRACTIONS \pm 1/64 ANGLES \pm 0° 30'		CODE					S404 YELLOW IRIDITE		CHECKED
TOLERANCES		A							FINISH & SPEC. NO.	ELEC. DES. APP.	MECH. DES. APP.
											MS3878 \emptyset

REQ. PER UNIT	USED ON			MS3886	Ø
	MODEL	ASSY. NO.	DATE		
2	RAK-1022	M5 3885	10-14-64		
2	RAK 1022	A3716	10-14-64		



REF: LK105

SYM	DESCRIPTION	DATE	CH. NO.	DRAFTS	CHECKER	ENG. APP.	REQ. ITEM	PART NO.	STURMER	DESCRIPTION	SYMBOL	
Ø		11-25-64	Ø	9.L.			16 GAUGE		THE TECHNICAL MATERIEL CORP. MAMARONECK, NEW YORK			
X	EXPER. RELEASE	10-14-64	X	Edm			STEEL		PLATE, MAGNET			
UNLESS OTHERWISE SPECIFIED DIMENSIONS ARE IN INCHES AND INCLUDE CHEMICALLY APPLIED OR PLATED FINISHES							MATERIAL					
TOLERANCES							TYPE & TEMPER		DRAWN		FINAL APPROVAL	
DECIMALS .X ± .05 .XX ± .01 .XXX ± .005							HEAT TREAT. SPEC.		CHECKED		MS3886 Ø	
FRACTIONS ± 1/64 ANGLES ± 0° 30'							FINISH & SPEC. NO.		MECH. DES. APP.			
CODE A							CHROME PLATE		@11-25-64		RDC	
SCALE									11-25-64			