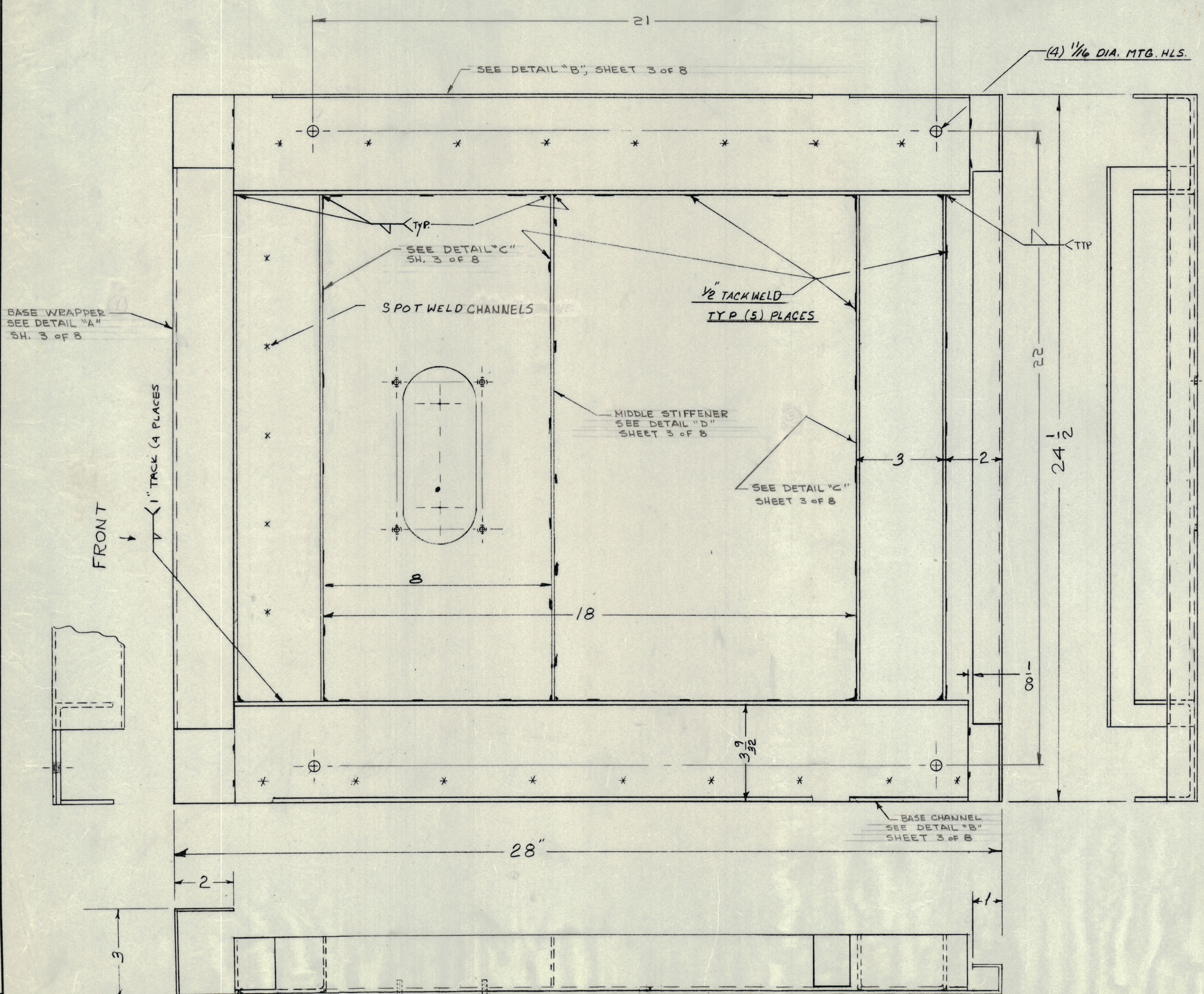




REVISIONS						
ZONE	BY	DESCRIPTION	DATE	E.M.N. NO.	DRAFT	CHKD
X	X	EXPER. RELEASE	10-15-64	X		
		ORIGINAL RELEASE FOR PRODUCTION	11-25-64			



MS 3884

1	RAK 102-1	
QTY/UNIT	MODEL USED ON	ASSY. NO.
SCALE	CODE	
	A	

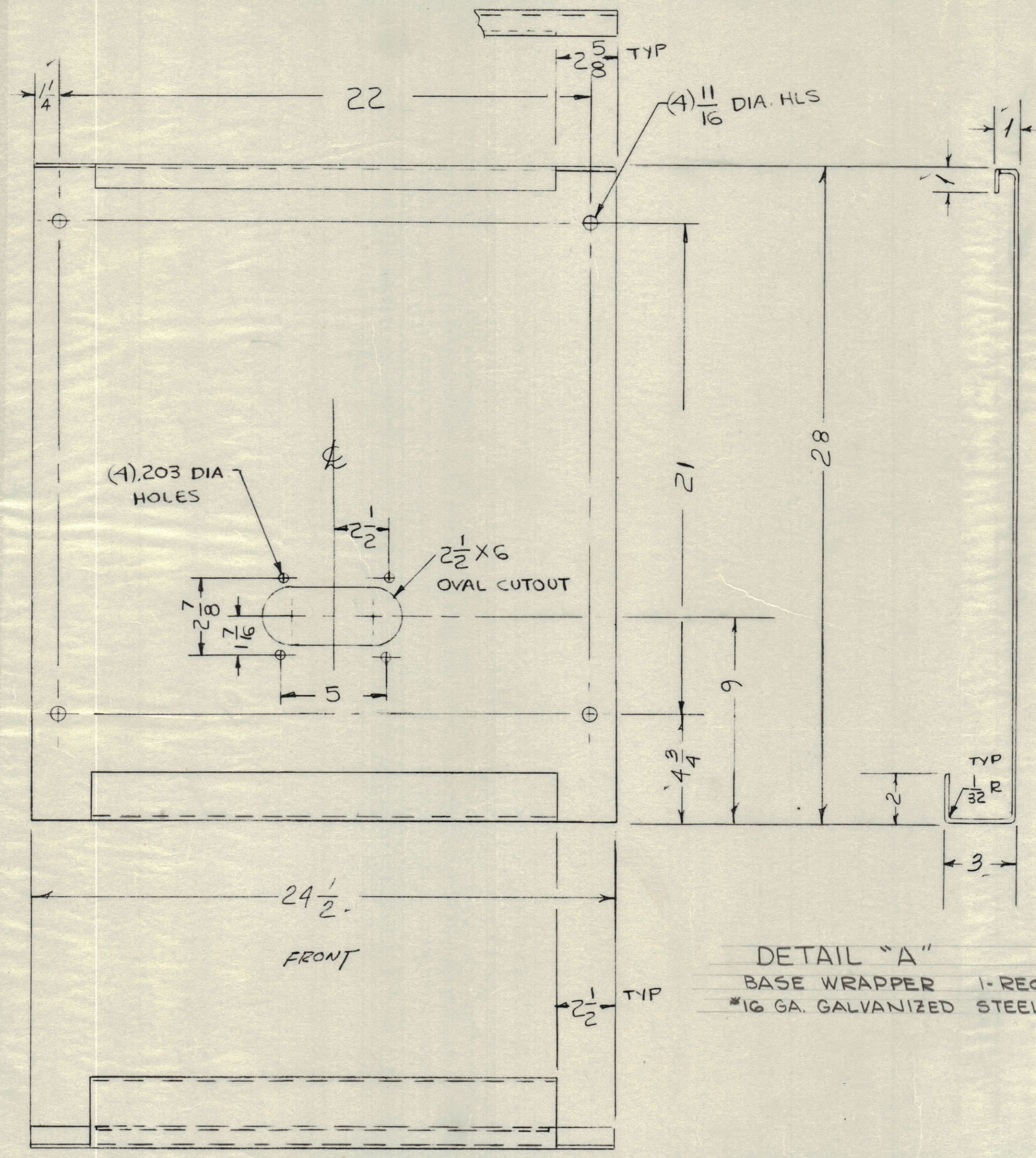
REQ'D.	ITEM	PART NUMBER	DESCRIPTION	SYMBOL
STUENTER LIST OF MATERIAL				
MATERIAL		SEE SHEET 3.		
FINISH		THE TECHNICAL MATERIEL CORP. MAMARONECK, NEW YORK		
		CABINET, ELECTRICAL EQUIPMENT (BASE ASSEMBLY)		
DRAWN	DATE	FINAL APPROVAL		
CHECKED	DATE	DATE		
ELECT. DES.	DATE	DATE		
MECH. DES.	DATE	DATE		
		MS 3884		
		SHEET 2 OF 8		

THE CONTENTS OF THIS DRAWING ARE THE EXCLUSIVE PROPERTY OF THE TECHNICAL MATERIEL CORP. ITS UNAUTHORIZED USE OR REPRODUCTION IN WHOLE OR IN PART IS STRICTLY FORBIDDEN.

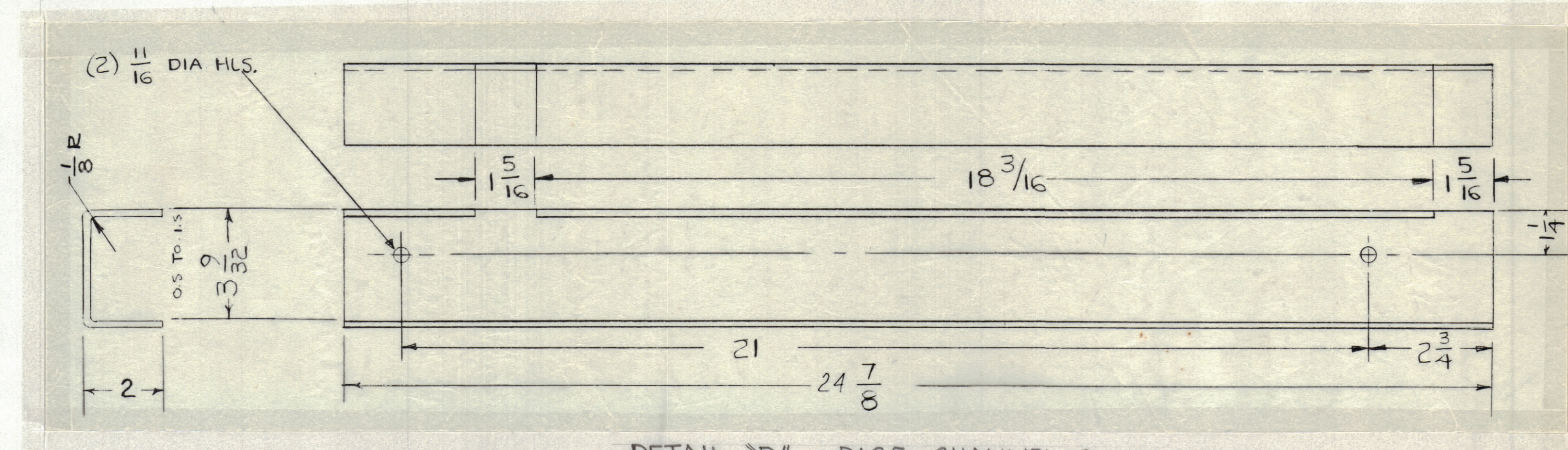
UNLESS OTHERWISE SPECIFIED DIMENSIONS ARE IN INCHES AND INCLUDE CHEMICALLY APPLIED OR PLATED FINISHES

TOLERANCES  
 DECIMALS ± .05  
 FRACTIONS ± 1/64  
 ANGLES ± 0° 30'

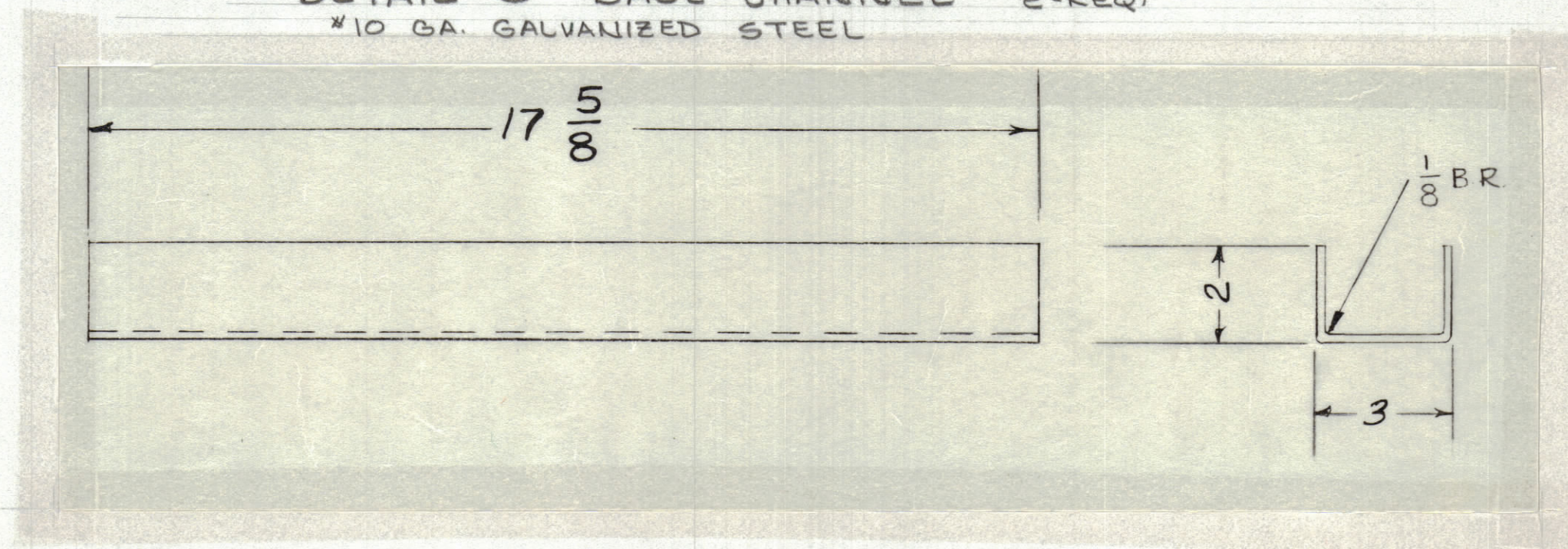
ZONE		SYM	DESCRIPTION	DATE	E.M.N. NO.	DRAFT	CHKD	APPD
X			EXPER. RELEASE	11-25-64	X			
			ORIGINAL RELEASE FOR PRODUCTION					



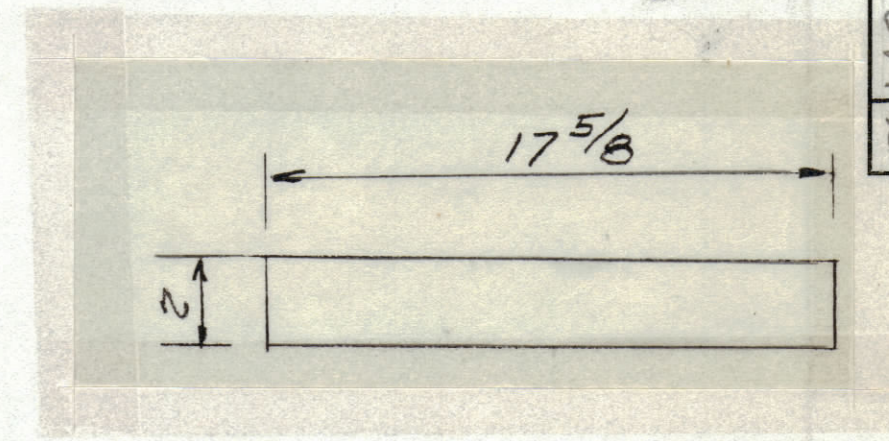
DETAIL "A"  
BASE WRAPPER 1-REQ.  
#10 GA. GALVANIZED STEEL



DETAIL "C" BASE CHANNEL 2-REQ.  
#10 GA. GALVANIZED STEEL



DETAIL "D" MIDDLE STIFFENER 1-REQ.  
#10 GA. GALVANIZED STEEL



MS3884

REQ'D.	ITEM	PART NUMBER	DESCRIPTION	SYMBOL
	STURMER LIST OF MATERIAL			
MATERIAL	AS NOTED			
FINISH				
UNLESS OTHERWISE SPECIFIED DIMENSIONS ARE IN INCHES AND INCLUDE CHEMICALLY APPLIED OR PLATED FINISHES			DRAWN	DATE
DECIMALS	± .05	FRACTIONS	± 1/64	11-25-64
ANGLES	± .01	TOLERANCES	± .003	11-25-64
THE CONTENTS OF THIS DRAWING ARE THE EXCLUSIVE PROPERTY OF THE TECHNICAL MATERIEL CORP. ITS UNAUTHORIZED USE OR REPRODUCTION IN WHOLE OR IN PART IS STRICTLY FORBIDDEN.			CHECKED	DATE
			11-25-64	11-25-64
			ELECT. DES.	DATE
			MECH. DES.	DATE
			11-25-64	11-25-64
			SHEET	3 OF 8
			REV. LTR.	

1	RAK 102-1	
QTY/UNIT	MODEL USED ON	APP'Y. NO.
SCALE	CODE	
	A	

NOTES

A

G

F

E

D

C

B

A

11

10

9

8

7

6

5

4

3

2

1

11

10

9

8

7

6

5

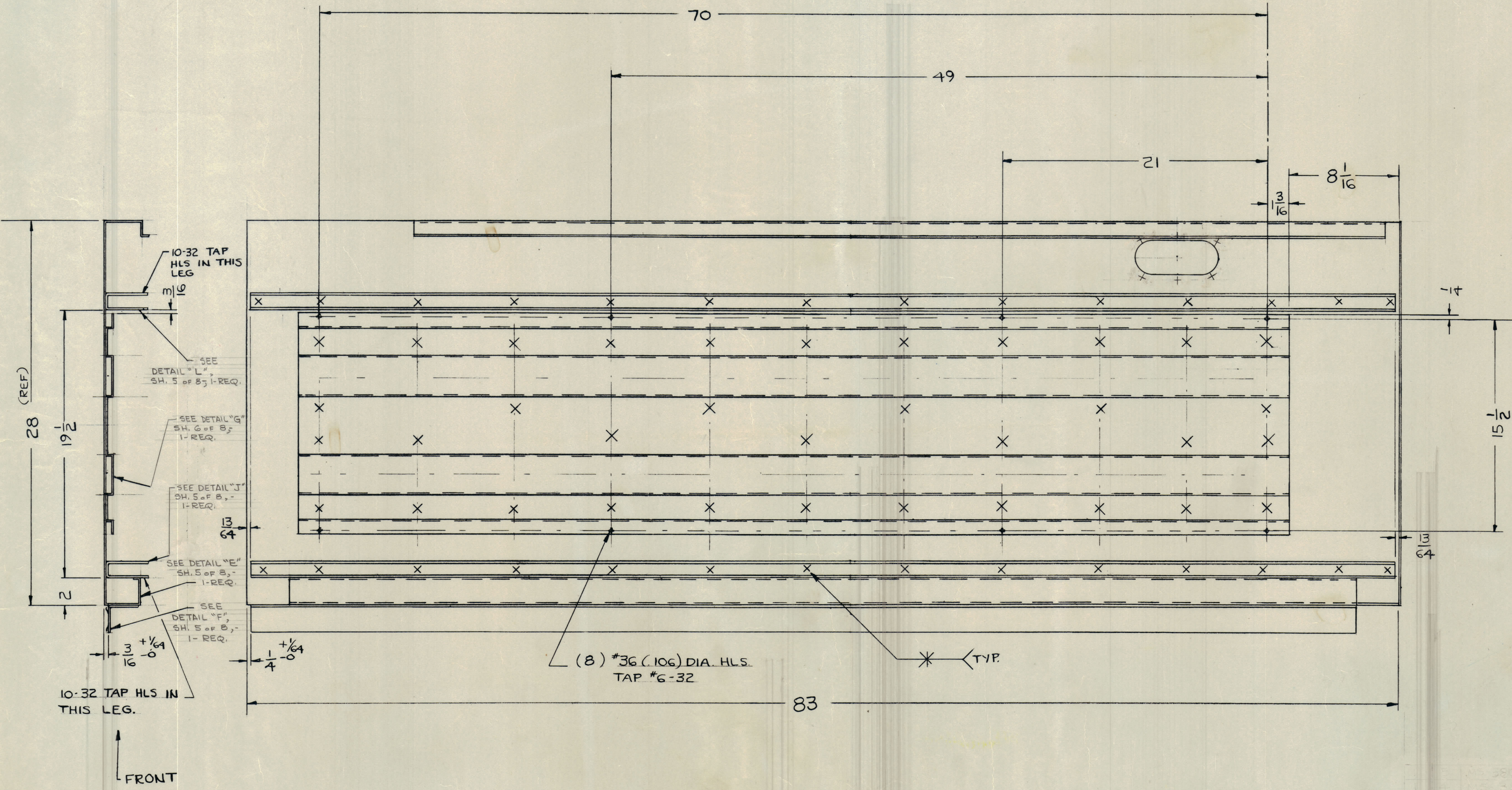
4

3

2

1

REVISIONS							
ZONE	SYM	DESCRIPTION	DATE	E.M.N. NO.	DRAFT	CHKD	APPD
-	X	EXPER. RELEASE	10-16-64	X			
-	Ø	ORIGINAL RELEASE FOR PRODUCTION	11-25-64				



Ø MS 3884

QTY/UNIT		MODEL USED ON		ASBY. NO.	
SCALE		CODE		DATE	
		A			

REQ'D.	ITEM	PART NUMBER	DESCRIPTION	SYMBOL
STURMER LIST OF MATERIAL				
MATERIAL SEE SHEETS 5 & 6				
FINISH				
UNLESS OTHERWISE SPECIFIED DIMENSIONS ARE IN INCHES AND INCLUDE CHEMICALLY APPLIED OR PLATED FINISHES				
DRAWN		DATE		FINAL APPROVAL
CHECKED		DATE		DATE
ELECT. DES.		DATE		
MECH. DES.		DATE		
		TOLERANCES		
DECIMALS		FRACTIONS		
.X ± .08		± 1/64		
.XX ± .01		ANGLES		
.XXX ± .005		± 0° 30'		

THE TECHNICAL MATERIEL CORP.  
MAMARONECK, NEW YORK

TITLE  
CABINET ELECTRICAL EQUIPMENT  
(LEFT SIDE, SUB-ASSY)

DATE 11-25-64

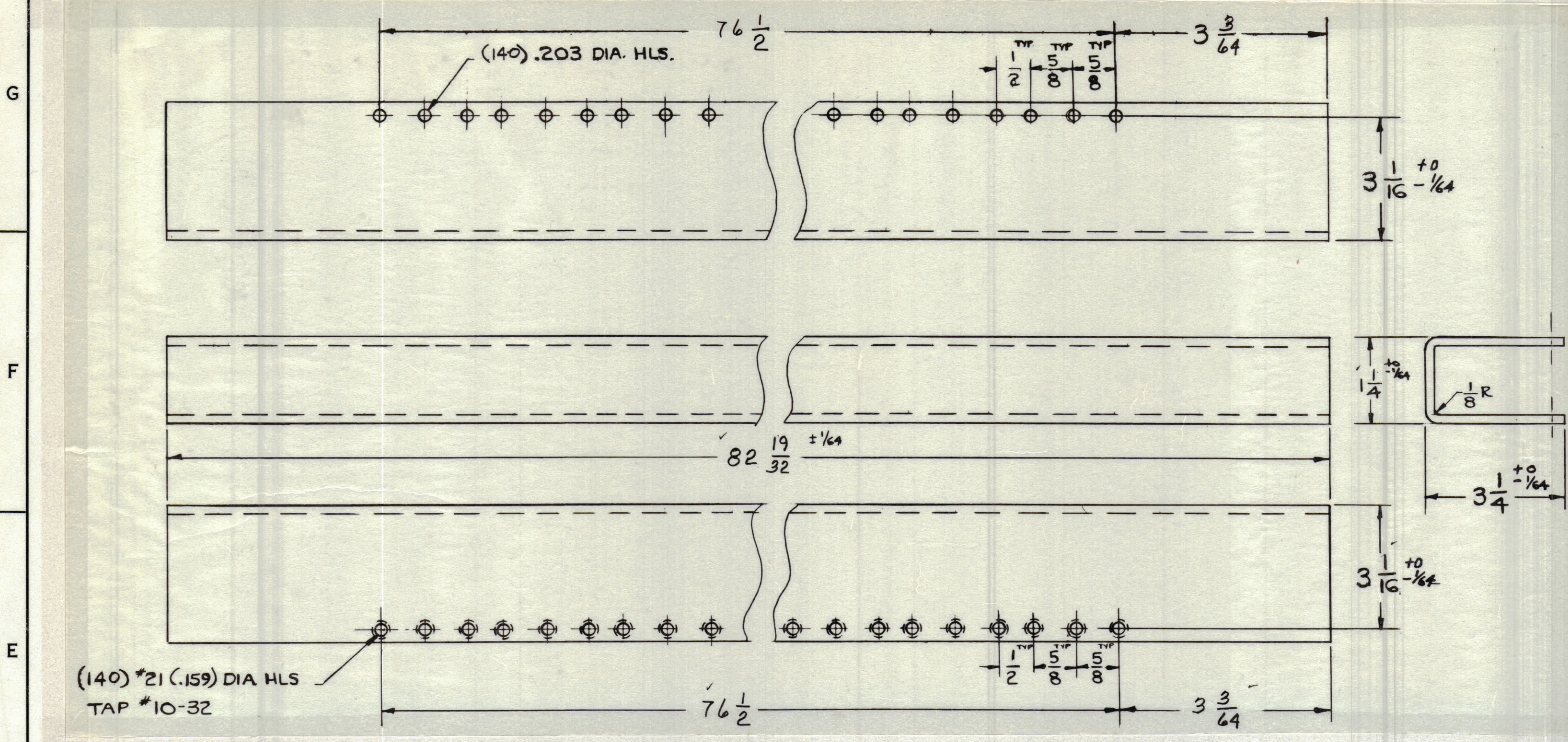
REV. LTR. MS 3884

SHEET 4 OF 8

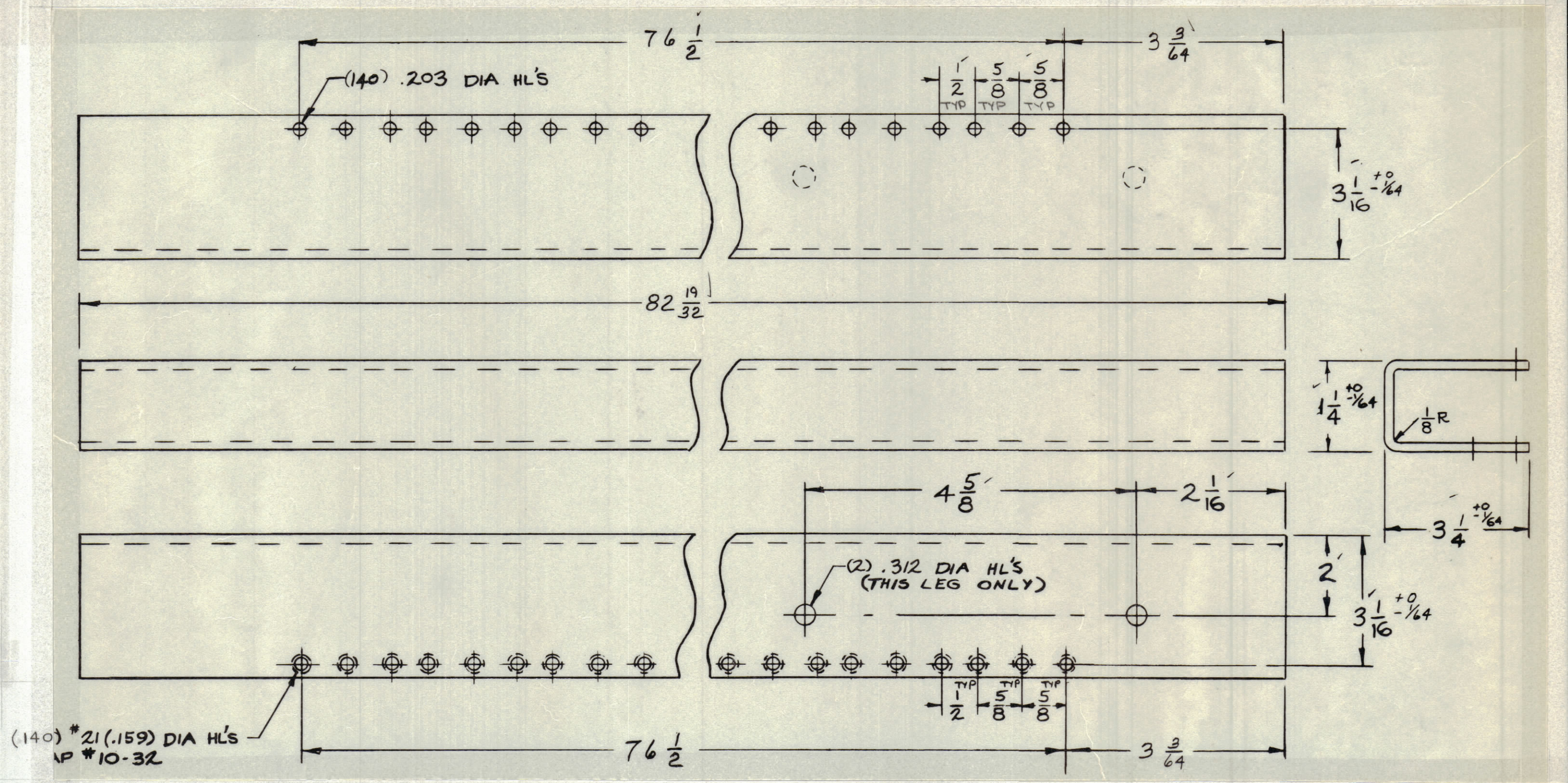
NOTES



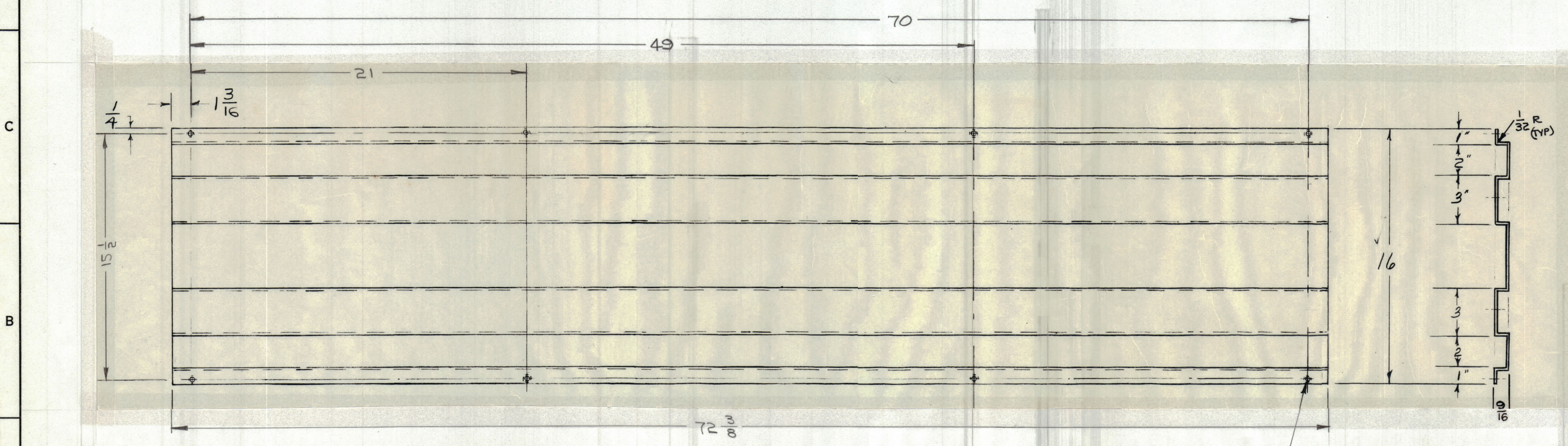
ZONE		SYM		DESCRIPTION		REVISIONS		DATE	E.M.N. NO.	DRAFT	CHKD	APPD
X				EXPER. RELEASE				11-17-64	X			
				ORIGINAL RELEASE FOR PRODUCTION				11-25-64				



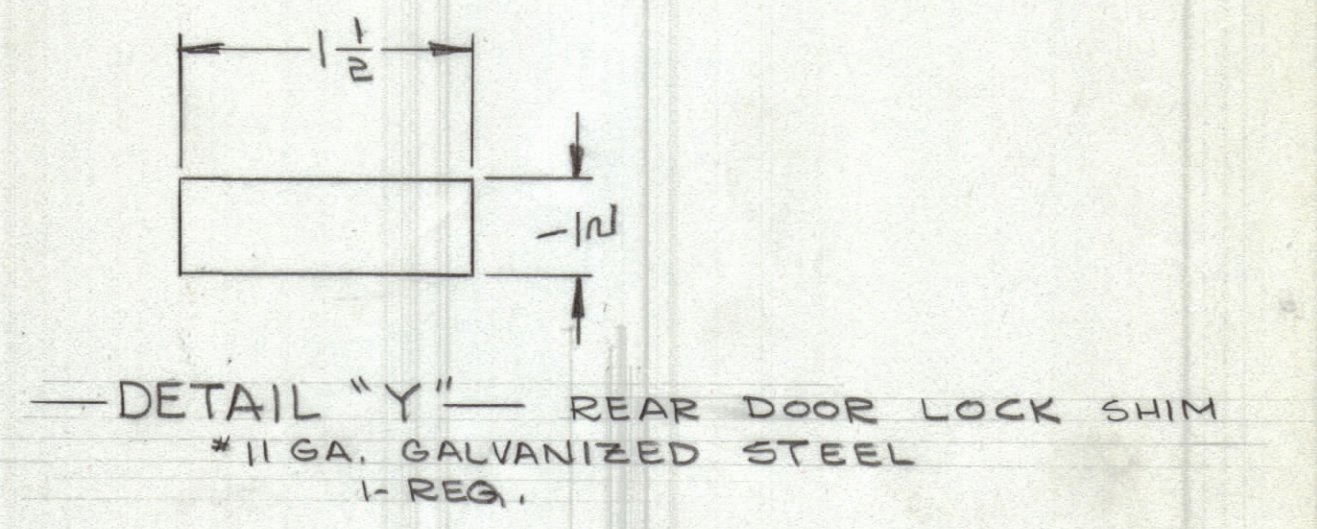
—DETAIL "H"— FRONT CHANNEL, RIGHT, AS SHOWN  
 —DETAIL "J"— FRONT CHANNEL, LEFT, OPPOSITE HAND  
 \*11 GA. GALVANIZED STEEL



—DETAIL "K"— REAR CHANNEL, RIGHT, AS SHOWN  
 —DETAIL "L"— REAR CHANNEL, LEFT, OPPOSITE HAND  
 \*11 GA. GALVANIZED STEEL



—DETAIL "G"— AIR CHAMBER SUPPORT  
 \*16 GA. GALVANIZED STEEL  
 1-REQ, LEFT SIDE  
 1-REQ, RIGHT SIDE



—DETAIL "Y"— REAR DOOR LOCK SHIM  
 \*11 GA. GALVANIZED STEEL  
 1-REQ.

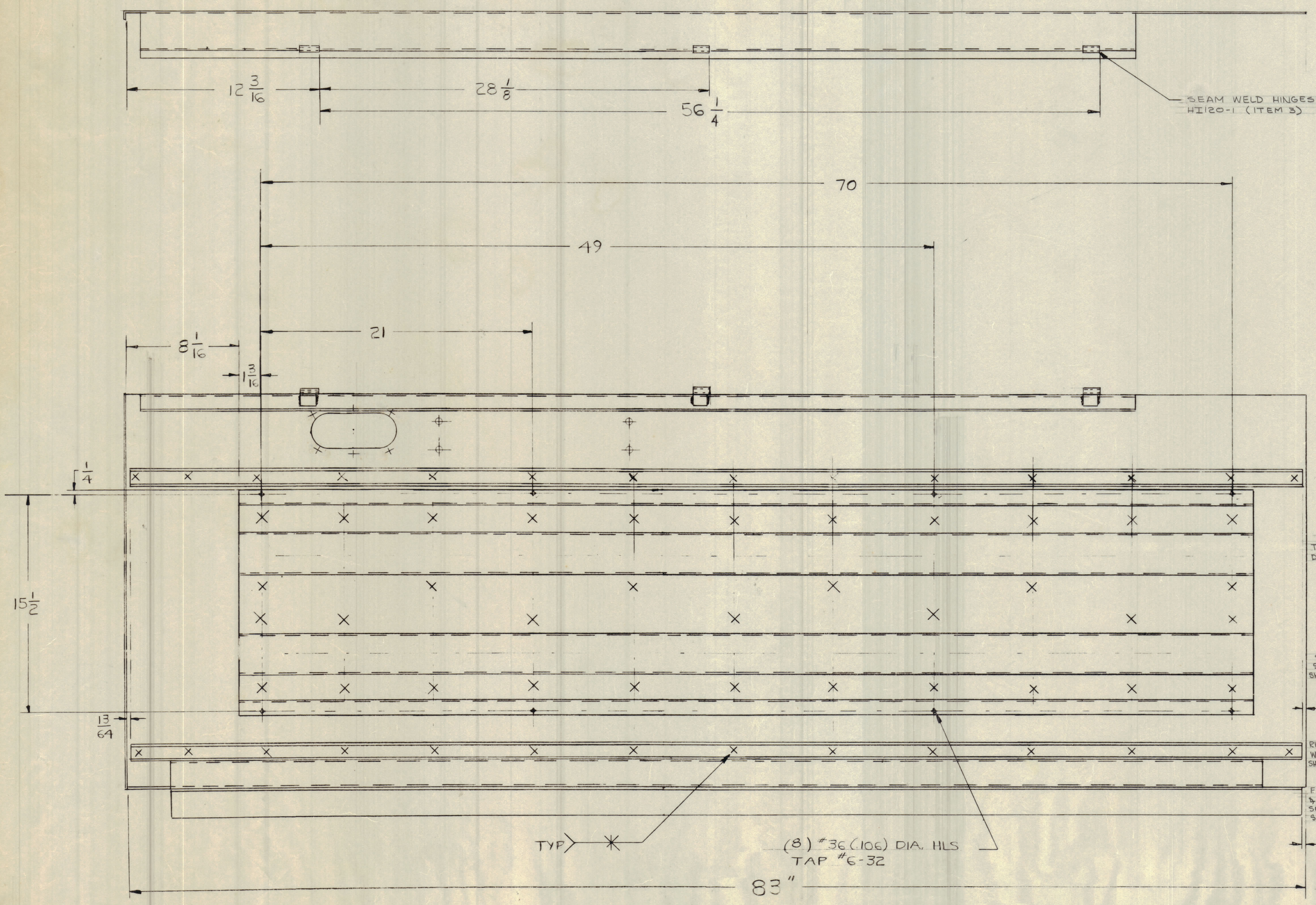
QTY/UNIT	BAK102-1	ASSY. NO.
SCALE	A	

REQ'D.	ITEM	PART NUMBER	DESCRIPTION	SYMBOL
			STURMER	
LIST OF MATERIAL				
MATERIAL		THE TECHNICAL MATERIEL CORP.		
AS NOTED		MAMARONECK, NEW YORK		
FINISH		TITLE		
		CABINET, ELECTRICAL EQUIPMENT		
		(DETAILS, COMMON)		
UNLESS OTHERWISE SPECIFIED		DATE	FINAL APPROVAL	
DIMENSIONS ARE IN INCHES AND INCLUDE		CHECKED	DATE	
CHEMICALLY APPLIED OR PLATED FINISHES				
DECIMALS	TOLERANCES	ELECT. DES.	DATE	
.X ± .05	± 1/64		11-25-64	
.XX ± .01	ANGLES	MECH. DES.	DATE	
.XXX ± .005	± 0° 30'		11-25-64	

NOTES

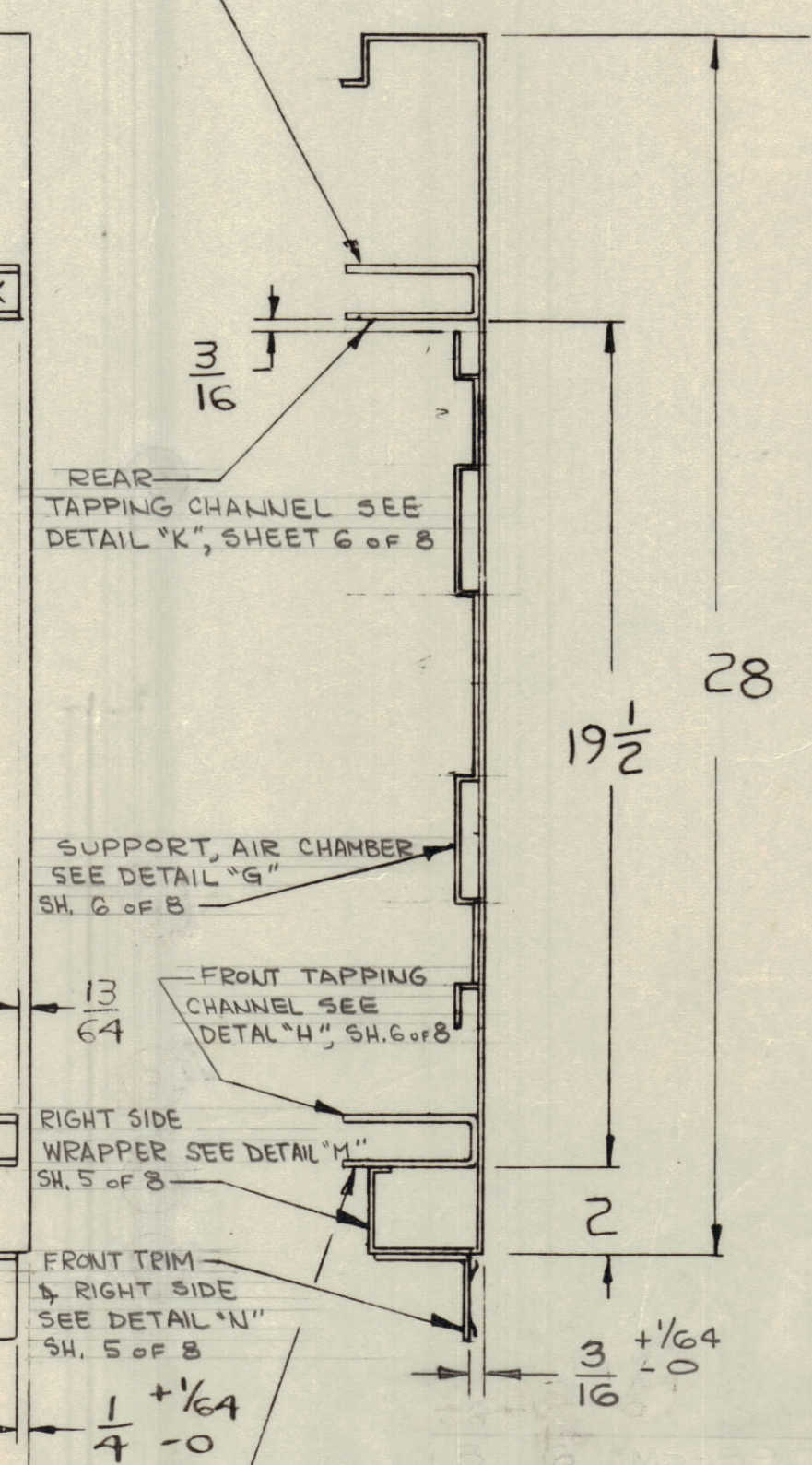
MS3884

REVISIONS					
ZONE	SYM	DESCRIPTION	DATE	E.M.N. NO.	APPD
X		EXPER. RELEASE	10-15-64	X	
Ø		ORIGINAL RELEASE FOR PRODUCTION	11-25-64	Ø	92



SEAM WELD HINGES  
HI20-1 (ITEM 3)

10-32 TAP HLS IN THIS LEG



TYP \* (8) #36 (106) DIA. HLS  
TAP #6-32

#10-32 TAPPED HOLES  
IN THIS LEG

Ø MS 3884

1	RAK 102-1 MS 3883
QTY./UNIT	MODEL USED OR
SCALE	CODE
	A

THE CONTENTS OF THIS DRAWING ARE THE EXCLUSIVE PROPERTY OF THE TECHNICAL MATERIEL CORP. ITS UNAUTHORIZED USE OR REPRODUCTION IN WHOLE OR IN PART IS STRICTLY FORBIDDEN.

REQ'D.	ITEM	PART NUMBER	DESCRIPTION	SYMBOL
			STURMER	
LIST OF MATERIAL				
MATERIAL			THE TECHNICAL MATERIEL CORP.	
SEE SHEETS 5 & 6			MAMARONECK, NEW YORK	
FINISH			TITLE	
			CABINET, ELECTRICAL EQUIPMENT	
			(RIGHT SIDE SUB-ASSY)	
UNLESS OTHERWISE SPECIFIED DIMENSIONS ARE IN INCHES AND INCLUDE CHEMICALLY APPLIED OR PLATED FINISHES			DRAWN	DATE
DECIMALS			10-15-64	11-25-64
FRACTIONS			Ø	Ø
TOLERANCES			DATE	DATE
.XX ± .01			11-25-64	11-25-64
.XXX ± .005			MS 3884	MS 3884
			DATE	DATE
			11-25-64	11-25-64
			SHEET	SHEET
			7 OF 8	7 OF 8
			REV. LTR.	REV. LTR.

NOTES

