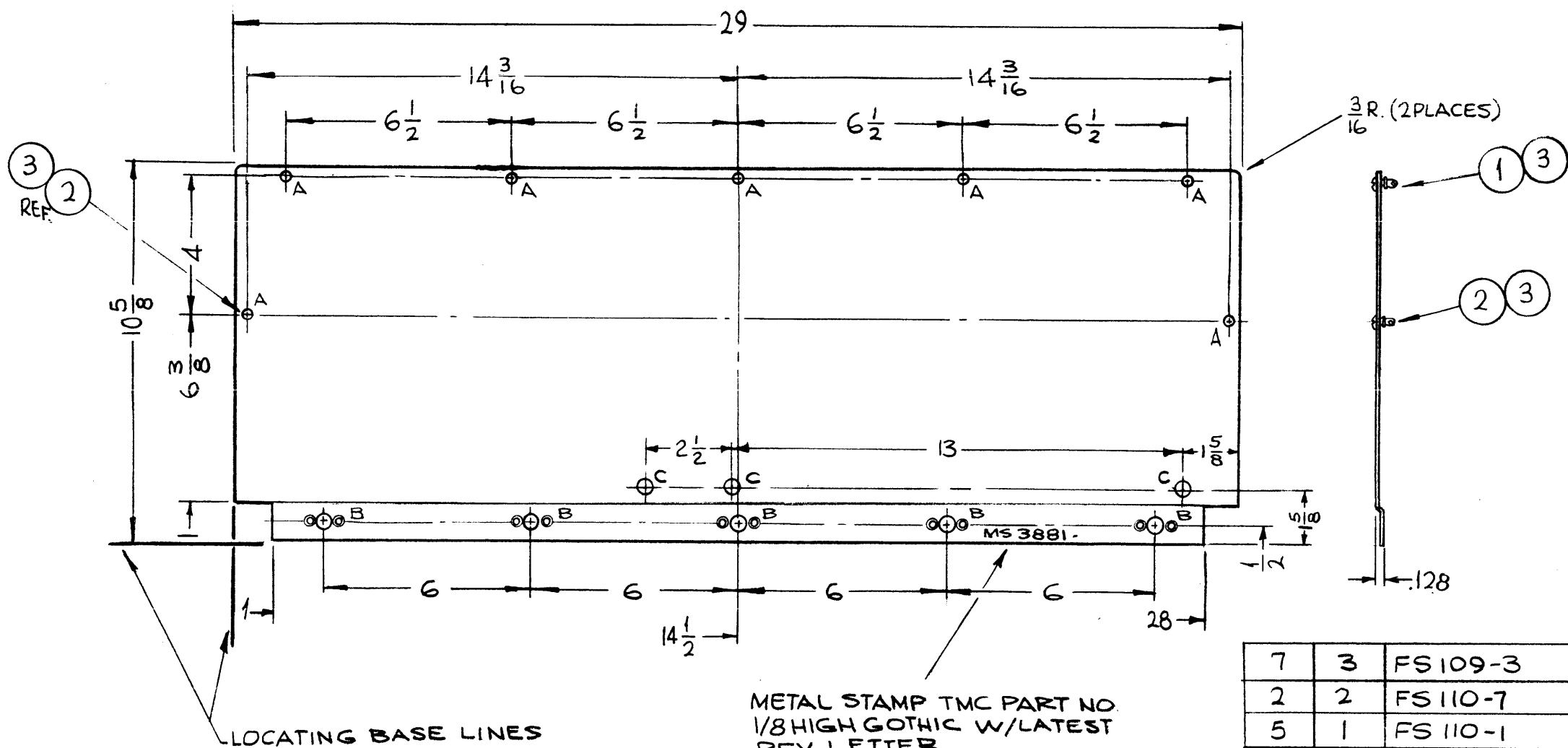
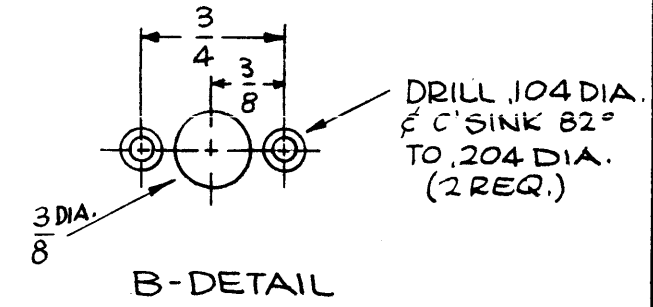


MS 3881 A

REVISIONS						
SYM	DESCRIPTION	DATE	E.M.N. NO.	DRAFT	CHKD	APPD
X	EXPERIMENTAL RELEASE	9-10-64	X	SRG		
Ø	ORIGINAL RELEASE FOR PRODUCTION	9-9-64	Ø	SR		
A	3 "C"-HOLES ADDED	10.9.64	12.606	WB	@	WB



HOLES	DESCRIPTION	REQ.
A	1/4 (.250) DIA.	7
B	SEE DETAIL	5
C	7/16 DIA	3



METAL STAMP TMC PART NO. 1/8 HIGH GOTHIC W/LATEST REV. LETTER.

LOCATING BASE LINES

- UNLESS OTHERWISE SPECIFIED:
1. USE MATERIAL THICKNESS FOR MAXIMUM RADIUS ON ALL BENDS
 2. ALL ANGULAR BENDS 90 DEGREES
 3. REMOVE ALL BURRS AND SHARP EDGES
 4. MOUNT INSERTS AFTER FINISHING

REQ'D.	ITEM	PART NUMBER	DESCRIPTION	SYMBOL
7	3	FS 109-3	RING, STUD RETAINING	
2	2	FS 110-7	STUD, SLOTTED HEAD	
5	1	FS 110-1	STUD, SLOTTED HEAD	

F. BUDETTI LIST OF MATERIAL

MATERIAL .064 THICK ALUMINUM 5052-H32	THE TECHNICAL MATERIEL CORP. MAMARONECK, NEW YORK		
FINISH S404 YELLOW IRIDITE	TITLE SHIELD, REAR, MAIN FRAME		
UNLESS OTHERWISE SPECIFIED DIMENSIONS ARE IN INCHES AND INCLUDE CHEMICALLY APPLIED OR PLATED FINISHES		DRAWN SRG	DATE 9-10-64
DECIMALS .X ± .05 .XX ± .01 .XXX ± .005		CHECKED @	DATE 9-10-64
FRACTIONS ± 1/64 ANGLES ± 0° 30'		ELECT. DES. @	DATE 9/11/64
TOLERANCES		MECH. DES. @	DATE
THE CONTENTS OF THIS DRAWING ARE THE EXCLUSIVE PROPERTY OF THE TECHNICAL MATERIEL CORP. ITS UNAUTHORIZED USE OR REPRODUCTION IN WHOLE OR IN PART IS STRICTLY FORBIDDEN.		FINAL APPROVAL MS 3881	
SCALE 1/4:1		DATE	
MODEL USED ON GPT-10K() AC AX-509-SI		DATE	
ASS'Y. NO.		DATE	
CODE A		DATE	
SHEET		REV. LTR.	

NOTES